

ELECTED OFFICIALS AND  
FIRST RESPONDERS  
MONTHLY MEETING



**The Bay Park  
Conveyance Project**  
A Western Bays Resiliency Initiative

APRIL 26, 2022



**Department of  
Environmental  
Conservation**







# AGENDA

1. Project Background
2. Construction Updates
3. Stakeholder Engagement
4. Question and Answer Session



# PROJECT BACKGROUND

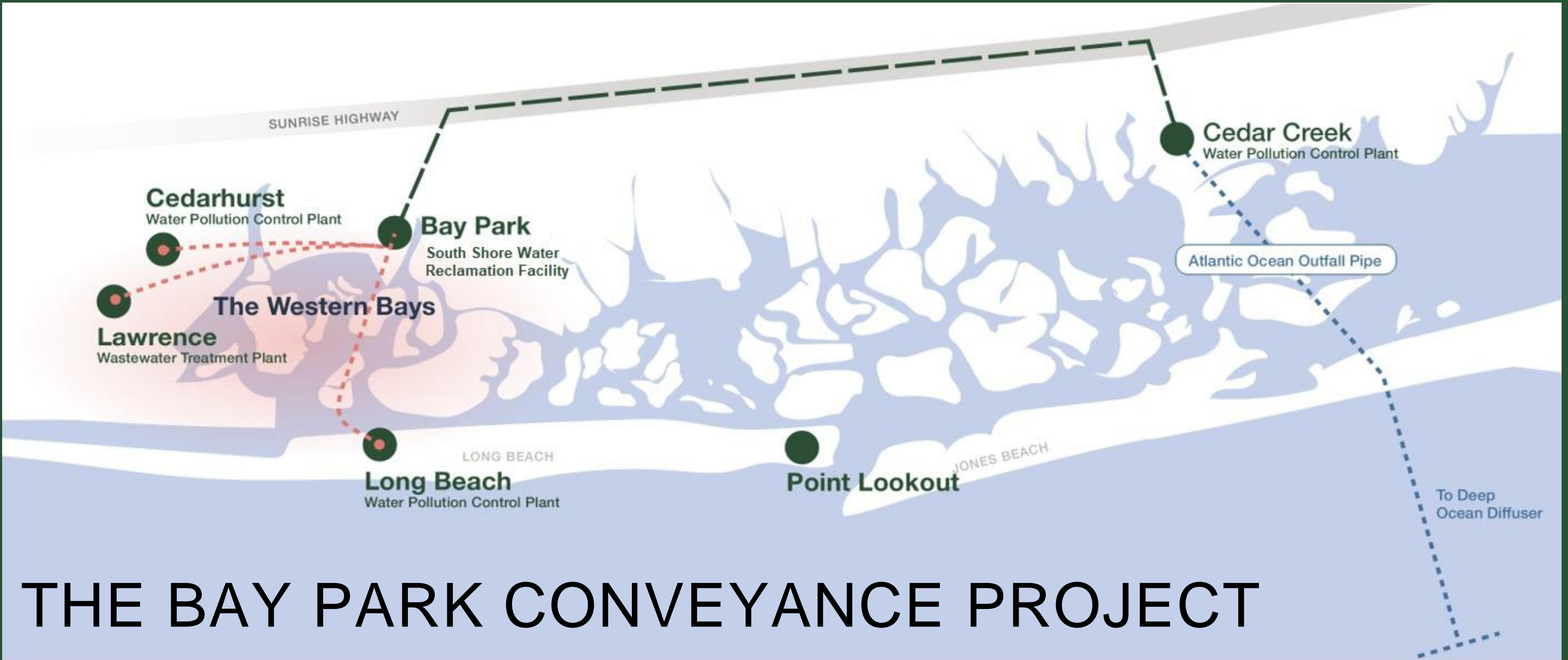
---



**WESTERN BAYS CONSTRUCTORS**

**PICONE | NORTHEAST REMSCO**





# THE BAY PARK CONVEYANCE PROJECT

The Project will reduce nitrogen pollution in the Western Bays by conveying treated water from the South Shore Water Reclamation Facility\* to the Cedar Creek Water Pollution Control Plant (WPCP) ocean outfall.

\*Formerly known as Bay Park Sewage Treatment Plant

# Project Benefits



## STORM PROTECTION

---

Spur the rapid ecological recovery of the Western Bays marshlands which will protect coastal communities from storm surge and sea level rise



## QUALITY OF LIFE FACTORS

---

Maximize quality of life by providing residents a place to work and play

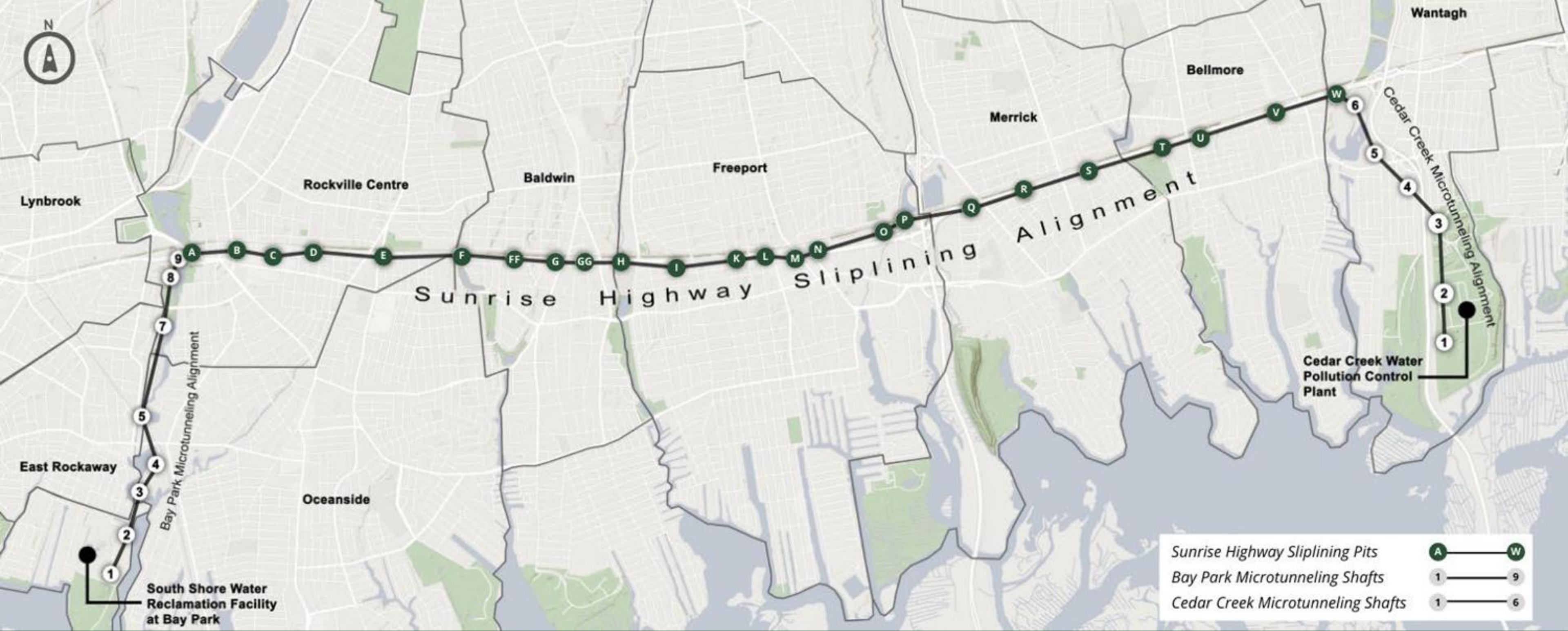


## ECONOMIC BENEFITS

---

The ecological recovery of the Western Bays and improved water quality will enhance and expand water-based recreational and commercial opportunities





# THE BAY PARK CONVEYANCE PROJECT OVERVIEW



# PROJECT TIMELINE





# CONSTRUCTION TECHNIQUES:

Microtunneling - A technique used to install piping deep into the ground.

Sliplining - Utilizes existing infrastructure by inserting a new pipe into an existing pipe.

Support of Excavation (SOE) - Used to support the earth during excavation.

Jet Grouting - A technique used as a means for groundwater control.



Jacking Station for Microtunnel Boring Machine (MTBM) named MARSH-MELLOW at Bay Park Shaft 2, March 2022



# CONSTRUCTION UPDATES

---





# BAY PARK SHAFT 1 (BP1)

Location: Within the footprint of the South Shore Water Reclamation Facility at Bay Park.



Bay Park

- Next to BP1, crews are constructing a new pump station, a wet well, and a diversion structure.
- Site is prepared and ready to receive the MTBM from BP2.
- Anticipated increase of construction vehicles and manpower for the duration of this activity.

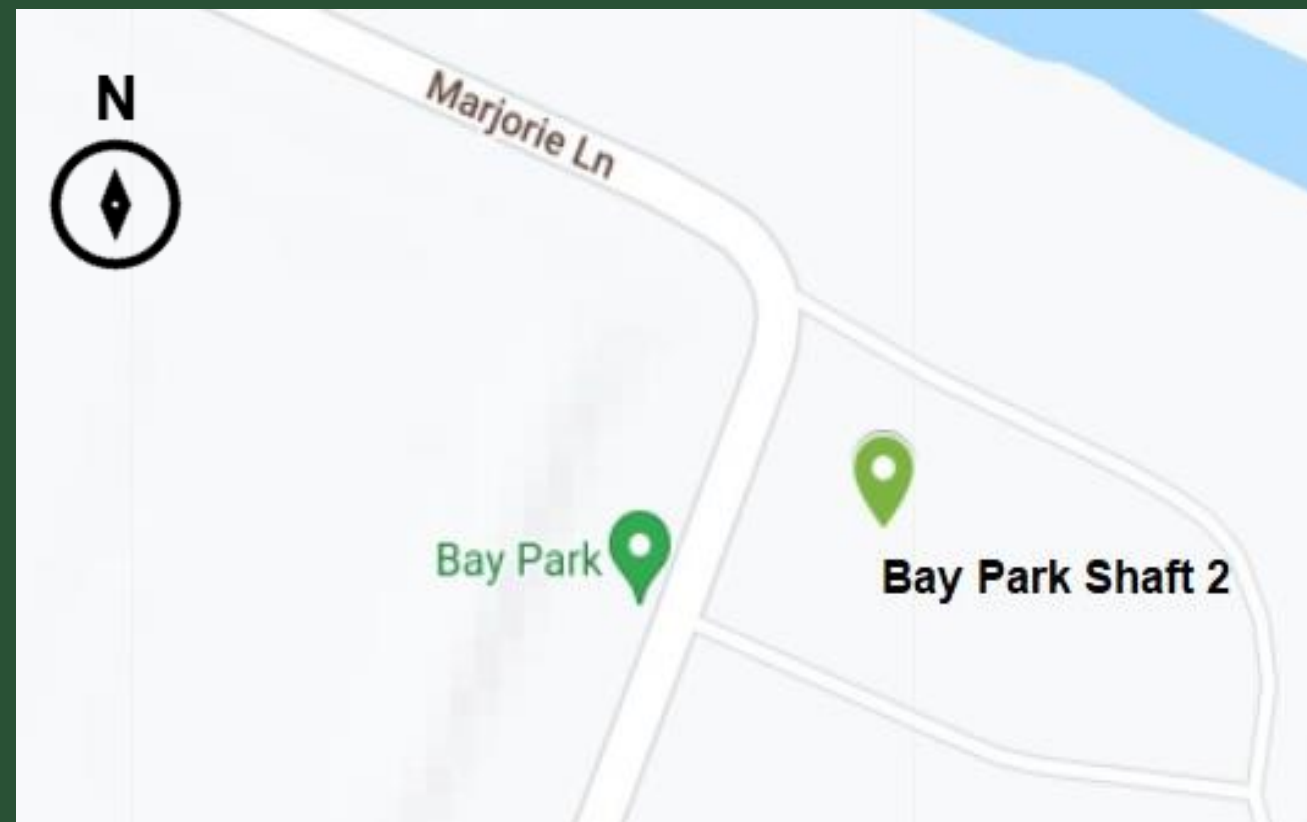


BP1 Wet Well, April 2022



# BAY PARK SHAFT 2 (BP2)

Location: Within the boundaries of Nassau County's Bay Park, at the northeast corner of Marjorie Lane.



Bay Park

- Trucks continue to transport materials including segments of large pipe to BP2 for microtunneling.
- Microtunneling from BP2 to BP1 has commenced.
- Park users will observe an increase in construction equipment and vehicles between Marjorie Lane and the boat launch.

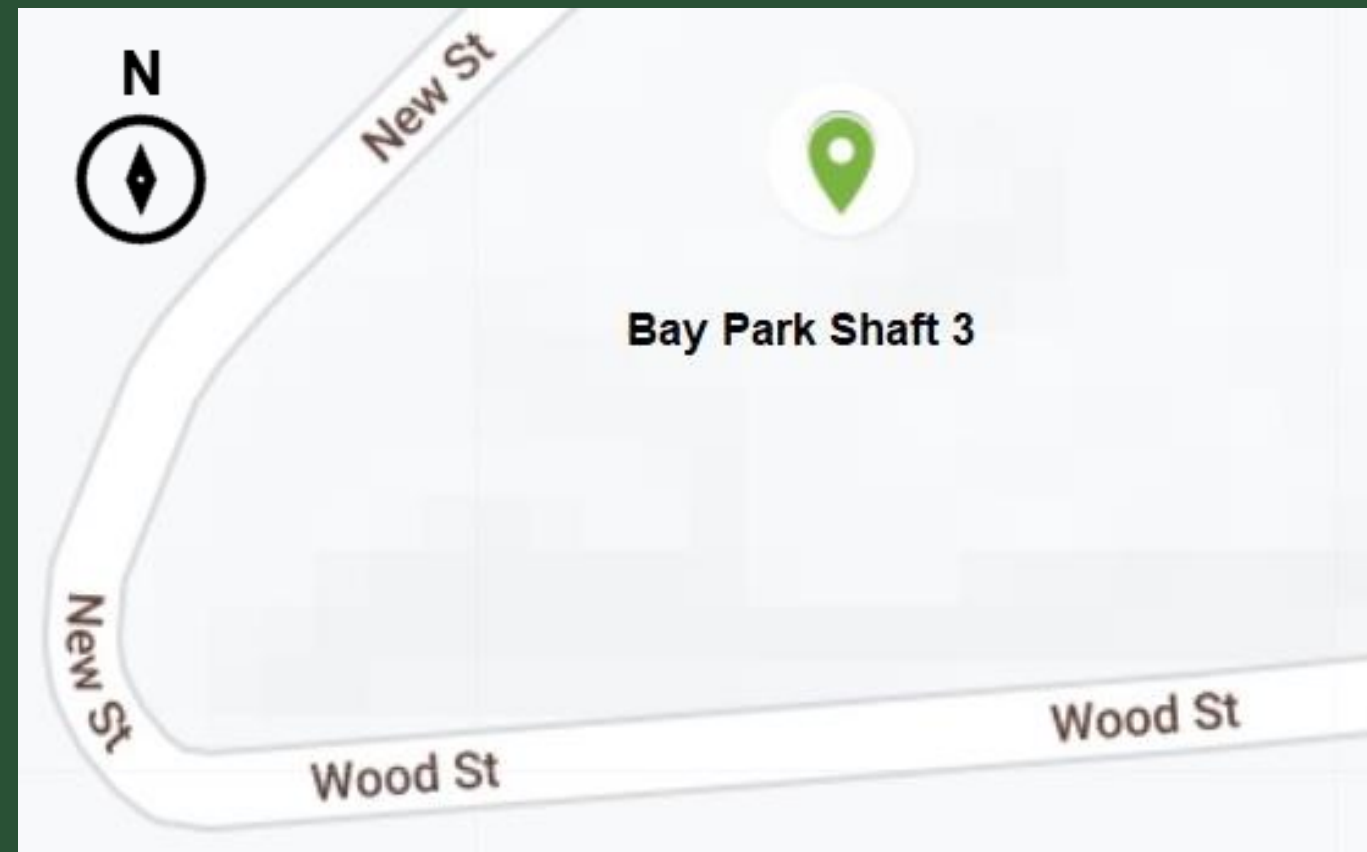


MTBM "MARSH-MELLOW" Lowered into BP2, April 2022



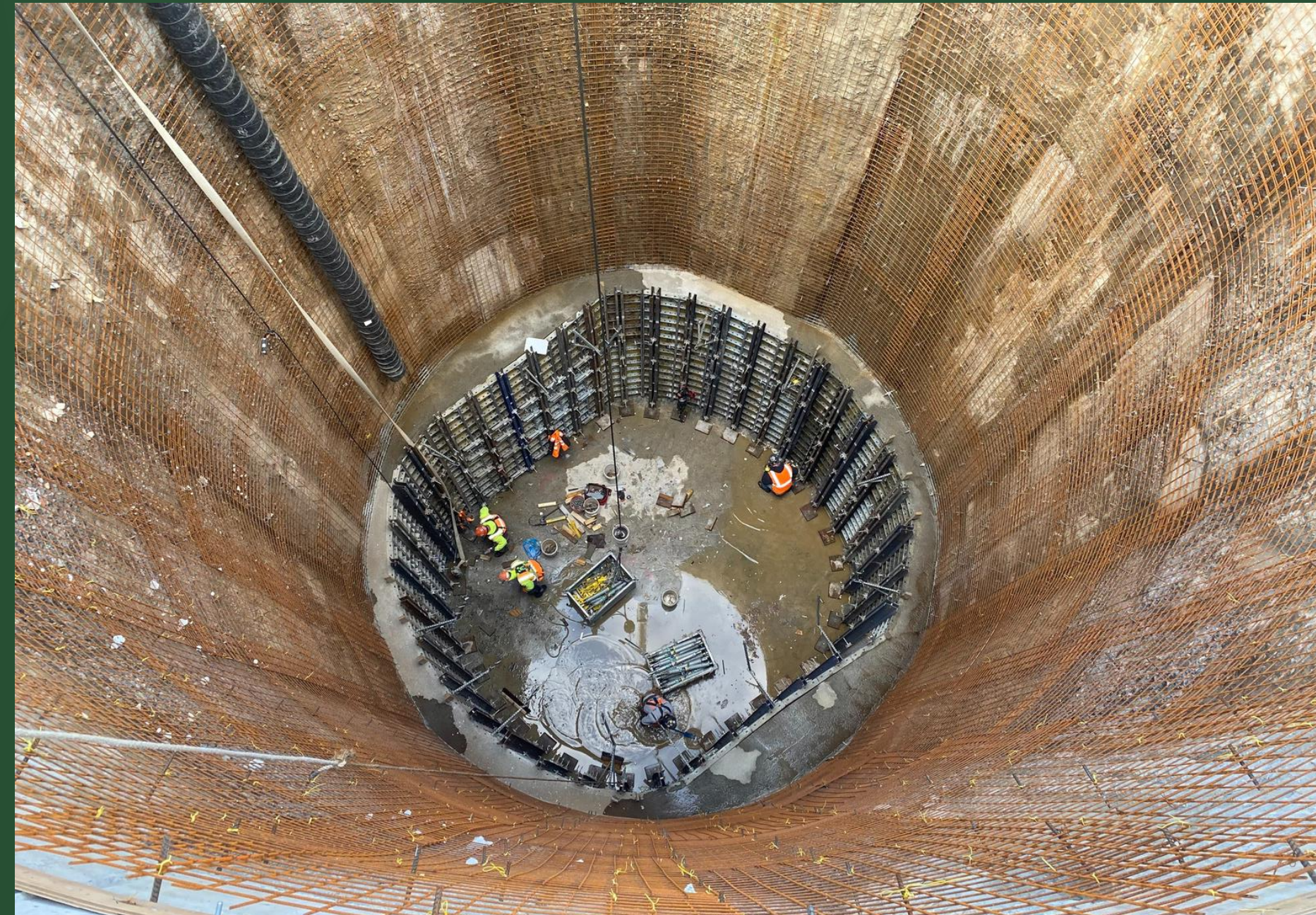
# BAY PARK SHAFT 3 (BP3)

Location: Off New Street in Oceanside.



Oceanside

- Shaft excavation is complete.
- Crews are constructing a scaffolding tower.
- Preparation for microtunneling is ongoing.

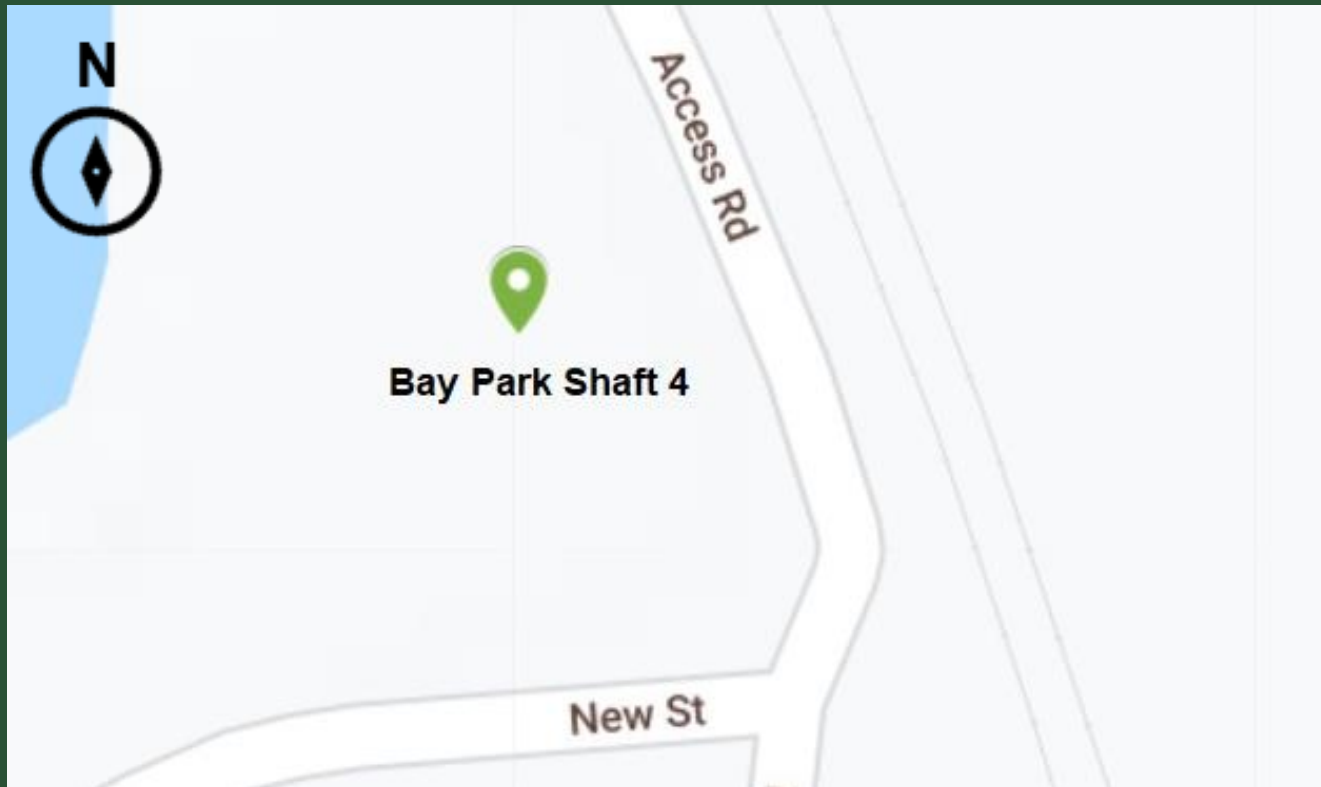


Concrete liner work at BP3, April 2022



# BAY PARK SHAFT 4 (BP4)

Location: Off New Street in Oceanside.



Oceanside

- Geotechnical monitoring devices have been installed on site.
- Site excavation is in progress.
- SOE installation is complete.

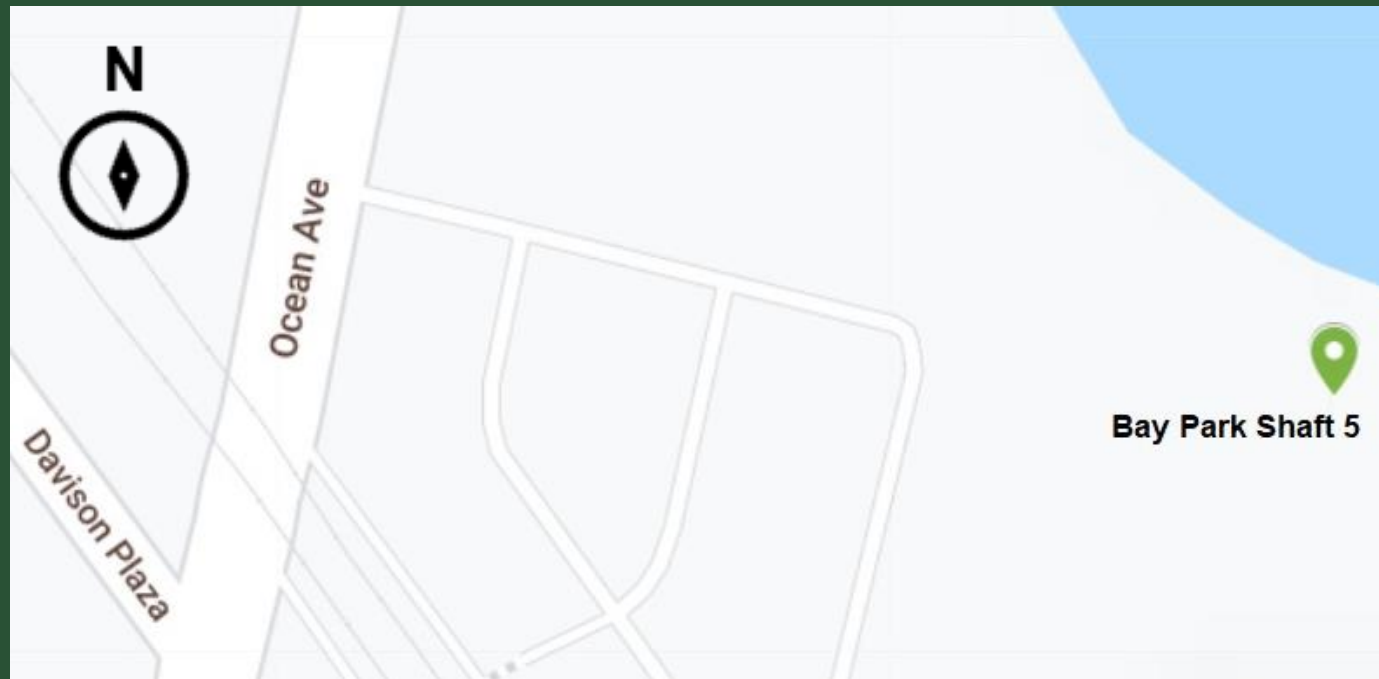


Guide Wall Construction at BP4, January 2022



# BAY PARK SHAFT 5 (BP5)

Location: East Rockaway Oxbow Park, off Ocean Avenue near the East Rockaway LIRR Station.



East Rockaway

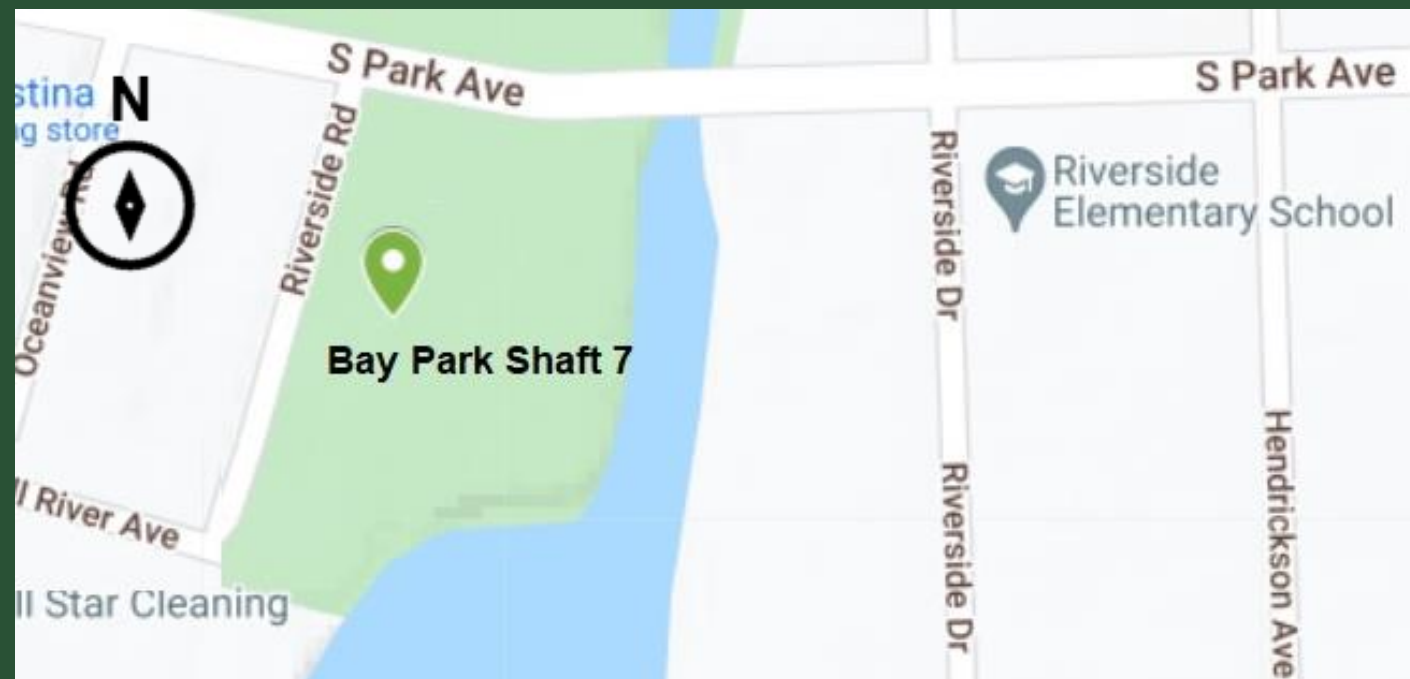
- Crews continue to install geotechnical monitoring devices.
- Site is being prepared in advance of excavation, anticipated to begin in May.
- To facilitate construction activities, access to 9 parking spaces at Oxbow Park will remain closed until fall 2022.
  - Approx. 60 additional parking spaces will remain open with two-way traffic into and out of the parking lot.
- Oxbow Park will remain closed through approx. fall 2022.





# BAY PARK SHAFT 7 (BP7)

Location: Rockville Centre  
Department of Public Works Yard,  
off Mill River Avenue.



East Rockaway

- Installation of SOE nearing completion. Jet grout to follow.
- Crews will continue to use the site for storage/laydown purposes.

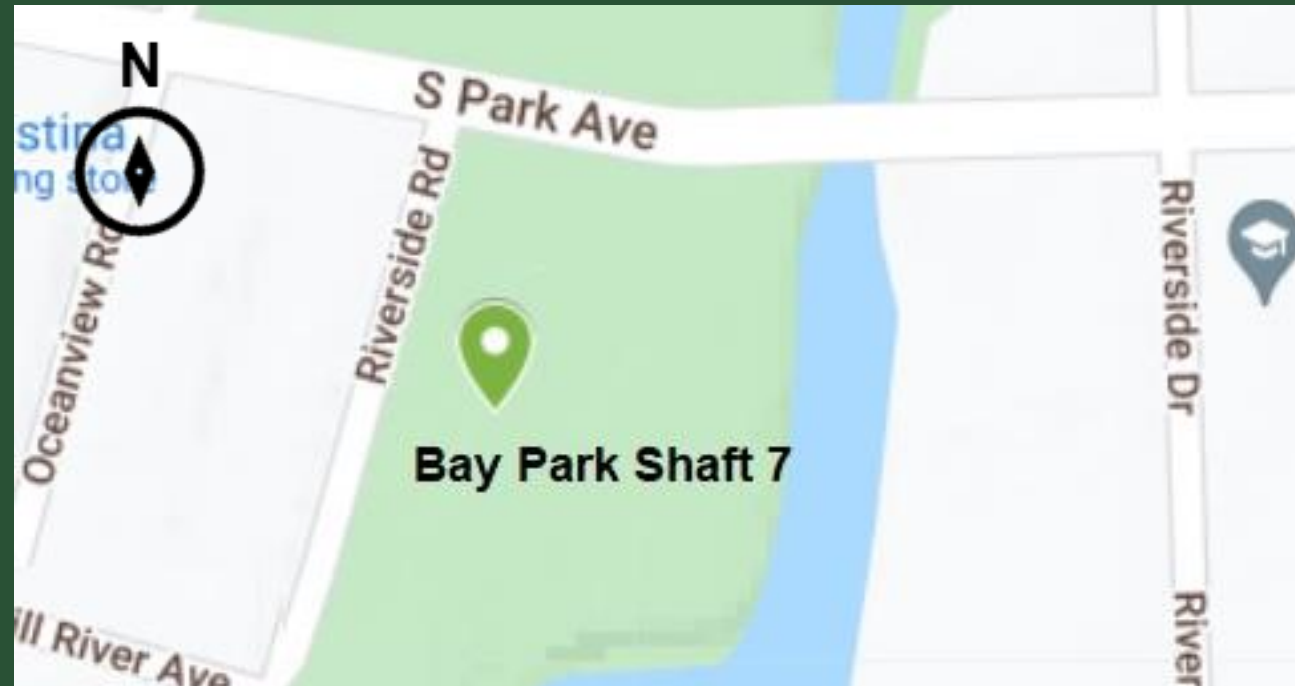


SOE Installation at BP7, April 2022



# BAY PARK SHAFT 8 (BP8)

Location: Rockville Centre's Lister Field, at the Mill River Complex Park.



Oceanside

- Ongoing coordination with Rockville Centre is taking place to minimize impacts to the recreational use of Lister Field.
- SOE installation complete and shaft prepared for excavation.



SOE Installation at BP8, December 2021



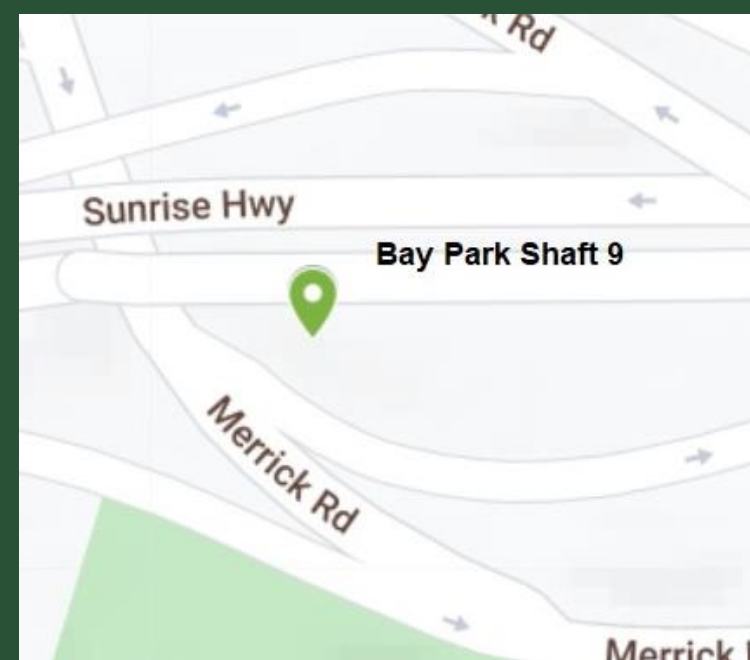
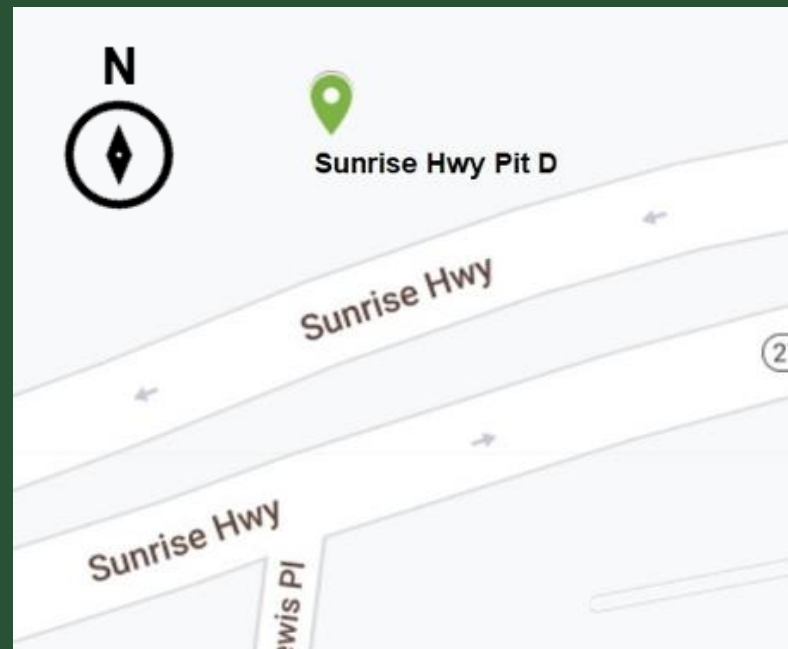
# SHAFT BP9/PIT A AND PIT D

Locations:

Pit D: A construction entrance has been established at Joyce Field in Rockville Centre Sunrise Highway for storage and laydown of materials.

BP9 / Pit A: A construction entrance has been established at the Sunrise Highway/Merrick Road Interchange.

- Crews are preparing the area in advance of SOE installation.
- Crews continue to install geotechnical monitoring devices.
- The sidewalk in front of Joyce Field, between Morris Avenue and North Forest Avenue, will remain closed for the duration of the Project until 2024.
- Eastbound lane on the Merrick Road exit ramp on Sunrise Highway expected to close temporarily. Flaggers will direct traffic in and out of work area.

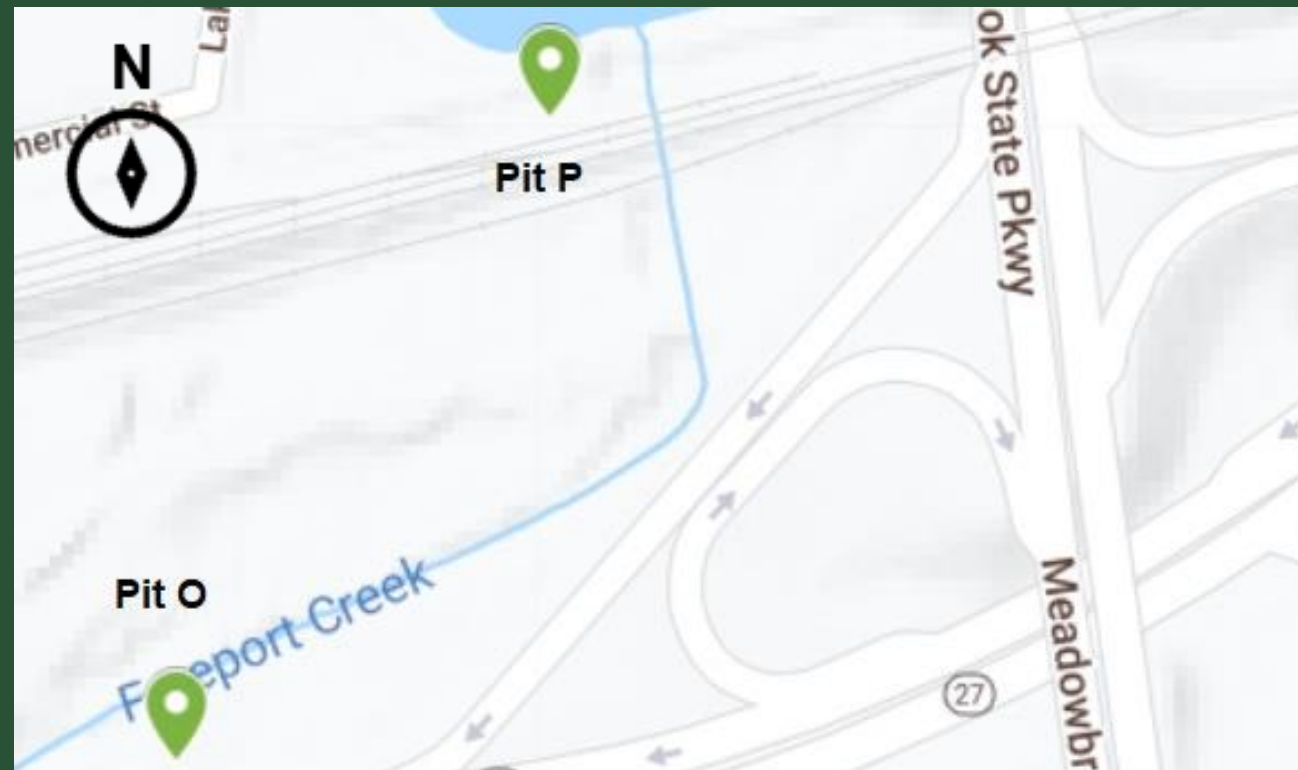


BP9 Site Preparation, January 2022



# SUNRISE HWY PITS O AND P

Location: Freeport, on the north side of Sunrise Highway, just west of the Meadowbrook Parkway.



Freeport

- Pipe jacking between Pits O and P is complete.
- WBC will continue to use the area for storage and laydown purposes.
- There will be a consistent presence of construction vehicles and crews in the area.



Start of Sliplining at Pit O, March 2022



# SUNRISE HWY PIT R

Location: Merrick, on the south side of Sunrise Highway, east of the Babylon Turnpike between Lansdowne Avenue and City Place.



Merrick

- Jacking frame to be installed at Pit R to slipline from Pit R to Q, then from Pit R to S.
- Crews continue to troubleshoot and address vibration concerns at Pit R.





# SUNRISE HWY PITS Q-V

Locations:

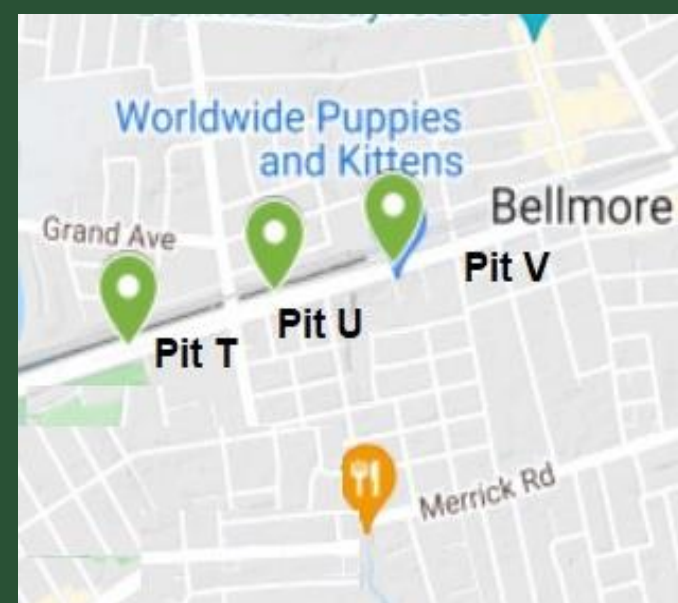
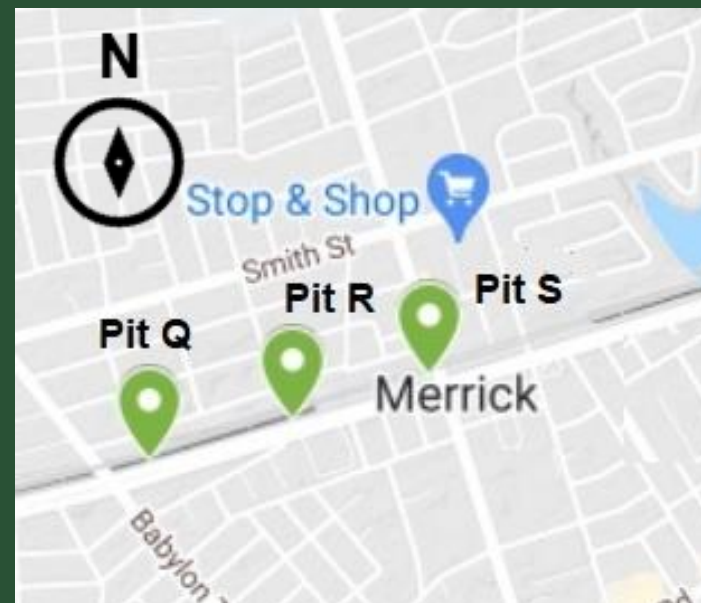
Pit Q: South side of Sunrise Highway, just west of Babylon Turnpike.

Pit S: South side of Sunrise Highway, east of the Meadowbrook Parkway between Hewlett Avenue and Wynsum Avenue.

Pit T: South side of Sunrise Highway, just west of Newbridge Road.

Pit U: South side of Sunrise Highway, east of Newbridge Road, between Hanson Place and Argyle Place.

- Pits Q and S: Excavation complete. Site preparation continues in advance of sliplining.
- Pits T and U: SOE installation and shaft excavation is ongoing. Sliplining to follow.
- Pit V: SOE installation is anticipated to begin in May.

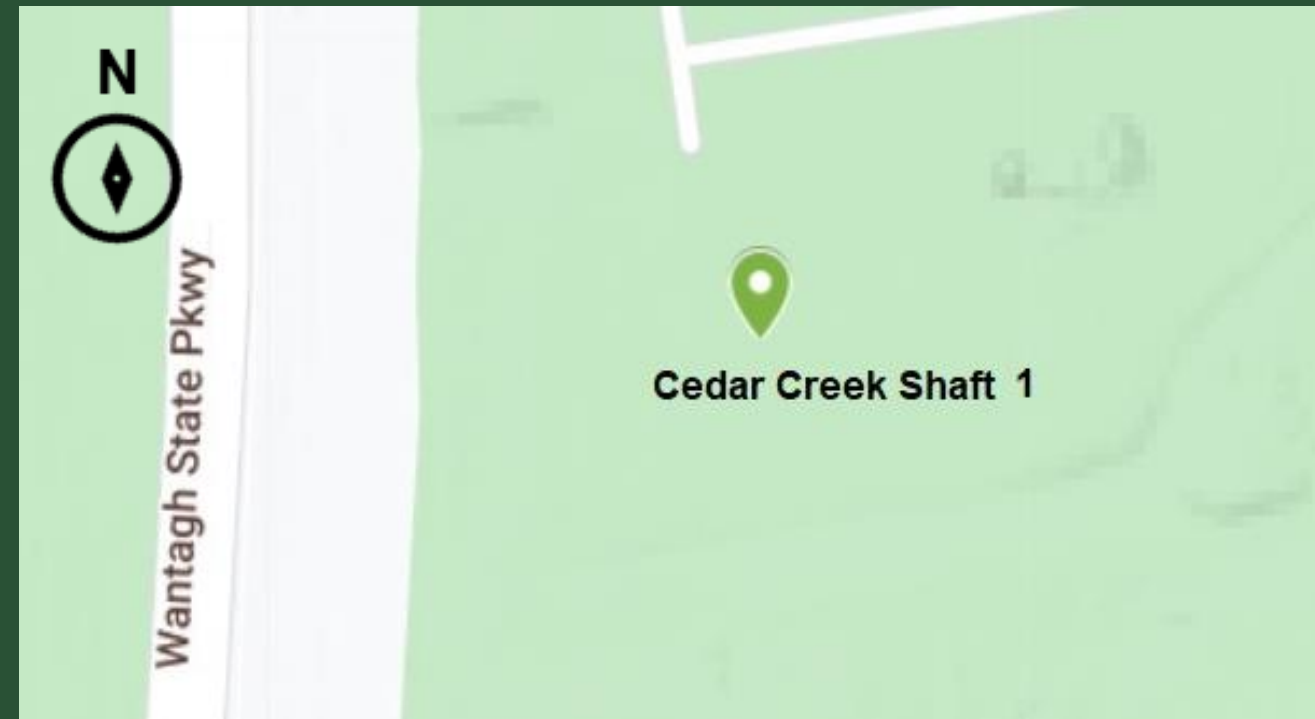


SOE installation at Pit T, April 2022



# CEDAR CREEK SHAFT 1 (CC1)

Location: Within the footprint of the Cedar Creek WPCP.

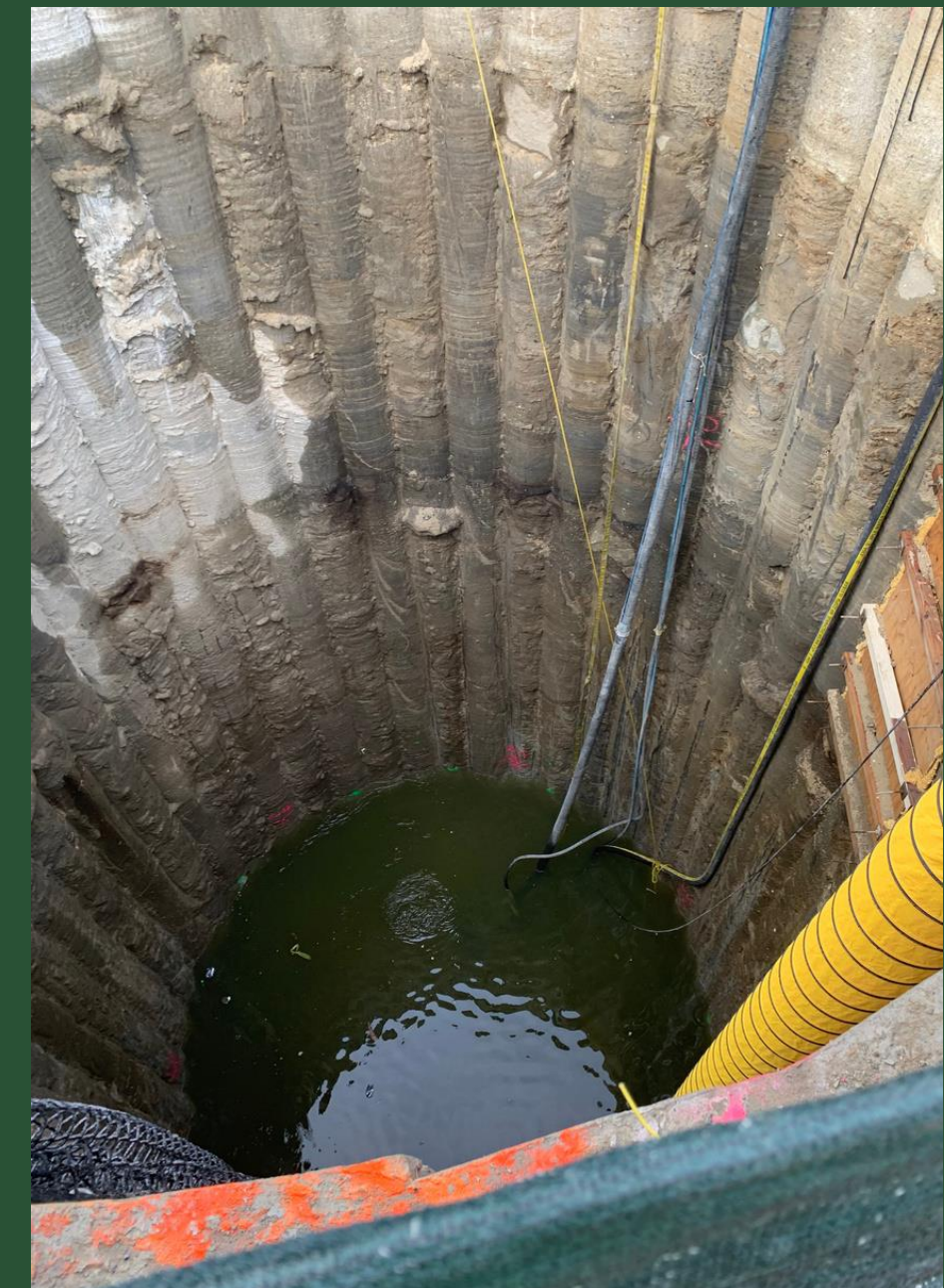


Wantagh

- Shaft excavation is complete.
- Crews are constructing concrete liner walls.
- Work at this location should have no noticeable impact to Cedar Creek Park users.



Mini Pile installation at CC1, April 2022



Shaft excavation at CC1, April 2022



# CEDAR CREEK SHAFT 2 (CC2)

Location: Within the footprint of the Cedar Creek WPCP.



Wantagh

- Shaft excavation is complete.
- Shaft is being prepared for microtunneling.
- 2nd MTBM (P.O.S.E.I.D.O.N.) has been assembled in preparation for microtunneling.

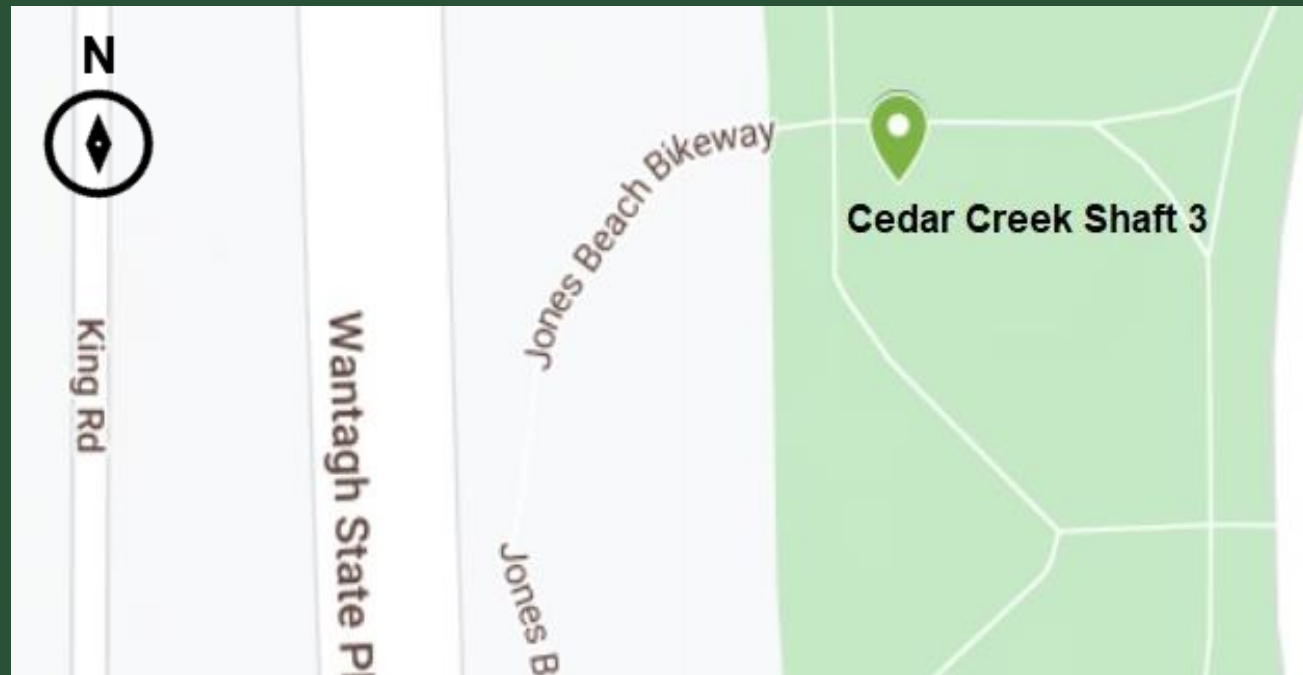


Shaft at CC2, March 2022



# CEDAR CREEK SHAFT 3 (CC3)

Location: Cedar Creek Park, near the entrance to the Wantagh State Parkway and Jones Beach Bike Path.



Wantagh

- Shaft excavation is complete.
- Shaft is being prepared for microtunneling.
- The Jones Beach Bike Path is expected to remain open throughout construction.
- The public should be mindful of construction vehicles as they enter and exit the park and follow signage and/or direction from flagging personnel in the area.

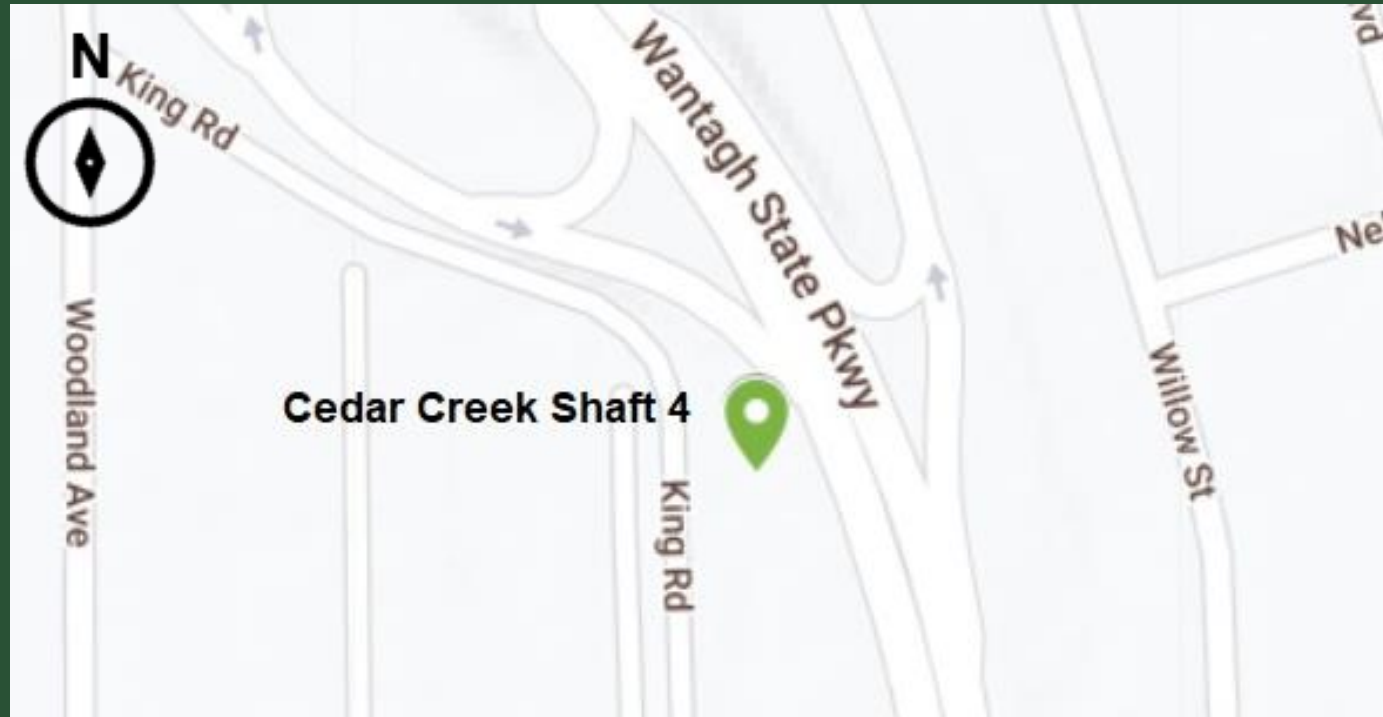


Guide Wall Installation at CC3, January 2022



# CEDAR CREEK SHAFT 4 (CC4)

Location: Off King Road adjacent to  
Wantagh Avenue/St. Regis Street.



Wantagh

- SOE and jet grout installation are complete.
- Installation of geotechnical monitoring devices is ongoing.



Construction site at CC4, April 2022

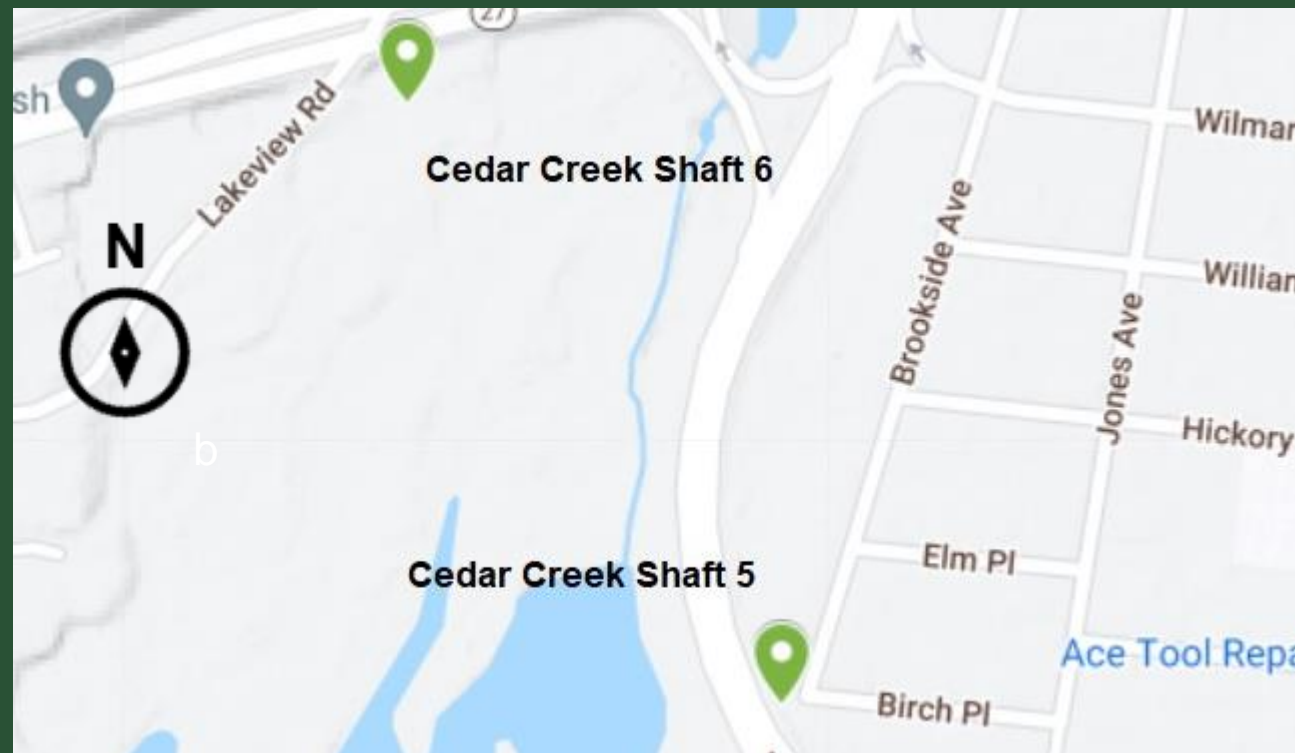


# CEDAR CREEK SHAFTS 5 (CC5) AND 6 (CC6)

Locations:

CC5: At the intersection of Brookside Avenue and Linden Street, just west of the Wantagh State Parkway.

CC6: Off Lakeview Road, south of Sunrise Highway.



Wantagh

- At CC5, SOE is complete. Jet grout to follow.
- At CC6, sheeting installation is complete. Jet grout operation to begin following CC5.



Fencing at CC6, April 2022



## PROTECTION OF TRAVELING PUBLIC AND WORK ZONES

- Work Zone Traffic Control and Maintenance and Protection of Traffic Signage is deployed to assist motorists and pedestrians around WBC work areas.
- Variable Message Signage (VMS) boards are deployed in advance of lane closures.
- Weekly “Before You Go” Facebook posts highlight lane closures for the week ahead.
- Canvassing notices are distributed to nearby residents and businesses as needed.





## TREE REMOVAL AND RESTORATION

- Some vegetation and trees require removal across the Project alignment to facilitate construction.
- NYSDEC and NCDPW are committed to, at minimum, replacing trees removed during construction.
- A tree restoration plan and schedule for replanting are being developed, and restoration details will be shared as information becomes available.







# SPOTLIGHT ON SAFETY & CONSTRUCTION TIDINESS

- All work pits and shafts will be enclosed and protected with fencing, inaccessible to the public.
- WBC is following all OSHA guidelines.
- Quality control team is present during each operation.
- Emergency services briefed monthly including onsite visits to shaft/pit locations.
- Ongoing coordination with WBC safety to establish protocol for emergency situations.



# COMMUNITY INFORMATION CENTER (CIC)

- The CIC, located at 265 Sunrise Highway, Rockville Centre is open.
- WBC offers in-person and virtual meetings from the CIC.
- A Project Representative is present:
  - M, W and F: 8am - 3pm
  - Tu and Th: 12pm - 7pm
  - Every other Sat: 9am - 12pm
- Available to meet by appointment.
- Please visit the Project website for the most updated hours.





# STAKEHOLDER ENGAGEMENT





# COMMUNITY OUTREACH PROGRAM



- Construction monthly look aheads and e-blasts.
- Door to door and digital canvassing notices.
- “Before You Go” Facebook campaign posted weekly.
- Quarterly public information sessions.
- Dedicated 24/7 project hotline, email, Facebook and website.
- “What’s Happening Here” signs at each work location.
- Attendance at community events.





# CONTACT US

Community Information Center  
265 Sunrise Highway  
Rockville Centre, New York 11570  
\*See website for hours

Email  
[BayParkConveyance@gmail.com](mailto:BayParkConveyance@gmail.com)

Website  
[www.BayParkConveyance.org](http://www.BayParkConveyance.org)

24/7 Project Hotline  
(516) 252-6121

Facebook  
[@BayParkConveyance](https://www.facebook.com/BayParkConveyance)





# QUESTION AND ANSWER SESSION

---



THANK YOU!

