

ELECTED OFFICIALS AND
FIRST RESPONDERS
MONTHLY MEETING



**The Bay Park
Conveyance Project**
A Western Bays Resiliency Initiative

June 28, 2022



WESTERN BAYS CONSTRUCTORS
PICONE | NORTHEAST REMSCO



**Department of
Environmental
Conservation**





AGENDA

1. Project Background
2. Construction Updates
3. Stakeholder Engagement
4. Question and Answer Session

PROJECT BACKGROUND





The Project will reduce nitrogen pollution in the Western Bays by conveying treated water from the South Shore Water Reclamation Facility* to the Cedar Creek Water Pollution Control Plant (WPCP) ocean outfall.

*Formerly known as Bay Park Sewage Treatment Plant

Project Benefits



STORM PROTECTION

Spur the rapid ecological recovery of the Western Bays marshlands, which will protect coastal communities from storm surge and sea-level rise



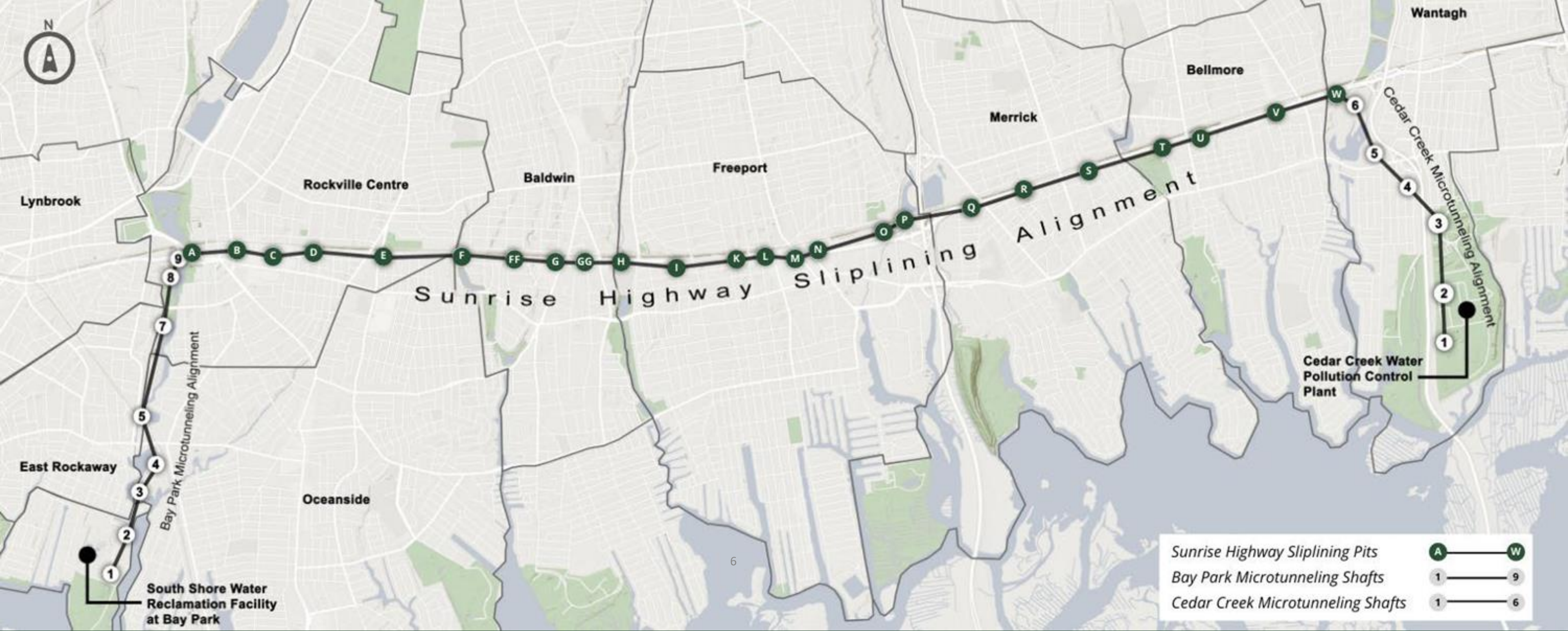
QUALITY OF LIFE FACTORS

Maximize⁵ quality of life by providing residents a place to work and play



ECONOMIC BENEFITS

The ecological recovery of the Western Bays and improved water quality will enhance and expand water-based recreational and commercial opportunities



THE BAY PARK CONVEYANCE PROJECT OVERVIEW

PROJECT TIMELINE



CONSTRUCTION TECHNIQUES

- Microtunneling - Technique used to install piping deep into the ground.
- Sliplining - Utilizes existing infrastructure by inserting a new pipe into an existing pipe.
- Support of Excavation (SOE) - Used to support the earth during excavation.
- Jet Grouting - Technique used for groundwater control.

Bay Park Shaft 1
(June 2022)



PROJECT BY THE NUMBERS

- 1,437 out of 57,024 Linear Feet of Microtunneling Completed.
- 6,500 out of 37,000 Linear Feet of Sliplining Pipe Installed.

CONSTRUCTION UPDATES



BAY PARK SHAFT 1 (BP1)

- Next to BP1, crews are constructing a new pump station, wet well, and diversion structure.
- MARSH-MELLOW, one of the Microtunnel Boring Machines (MTBM), successfully arrived at BP1 from BP2, completing the project's first microtunneling operation.



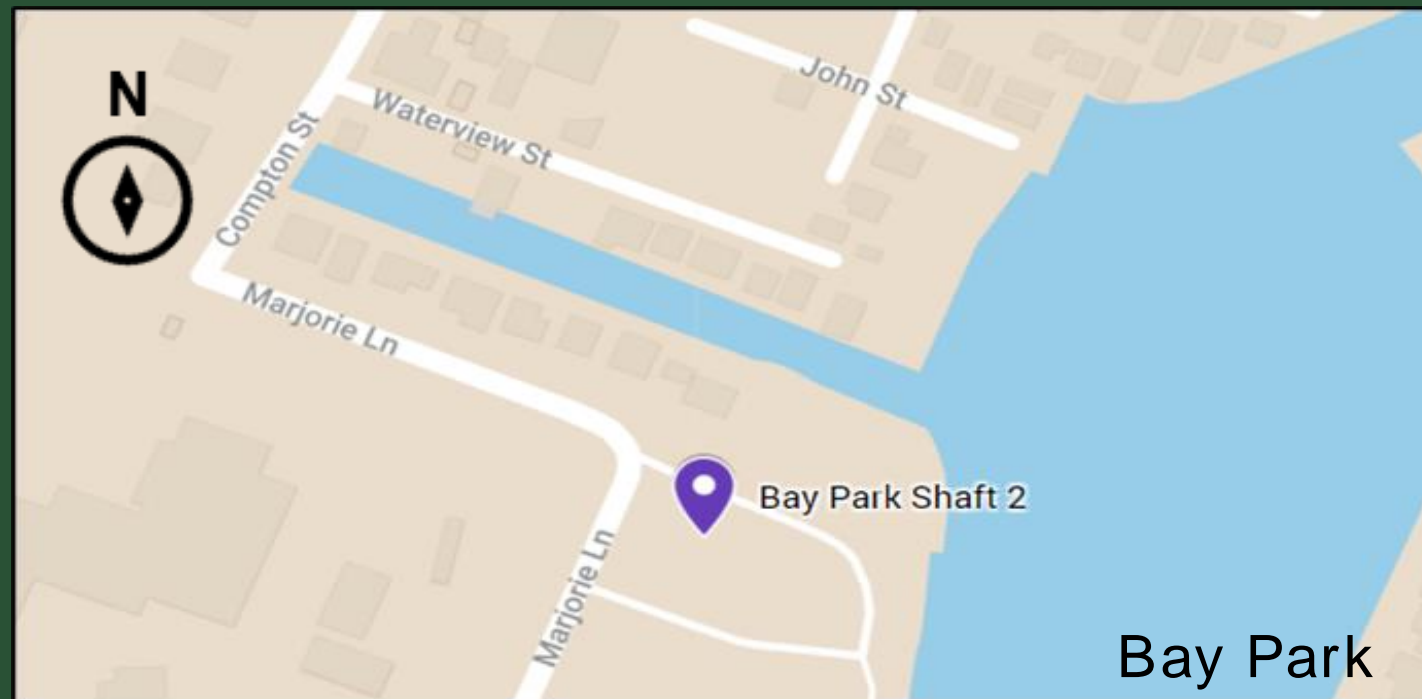
Location: Within the footprint of the South Shore Water Reclamation Facility at Bay Park



Diversion Structure at BP1 (June 2022)

BAY PARK SHAFT 2 (BP2)

- Trucks continue to transport materials including segments of large pipe to BP2 for microtunneling.
- Microtunneling from BP2 to BP3 has commenced.
- Park users will observe an increase in construction equipment and vehicles near Marjorie Lane.



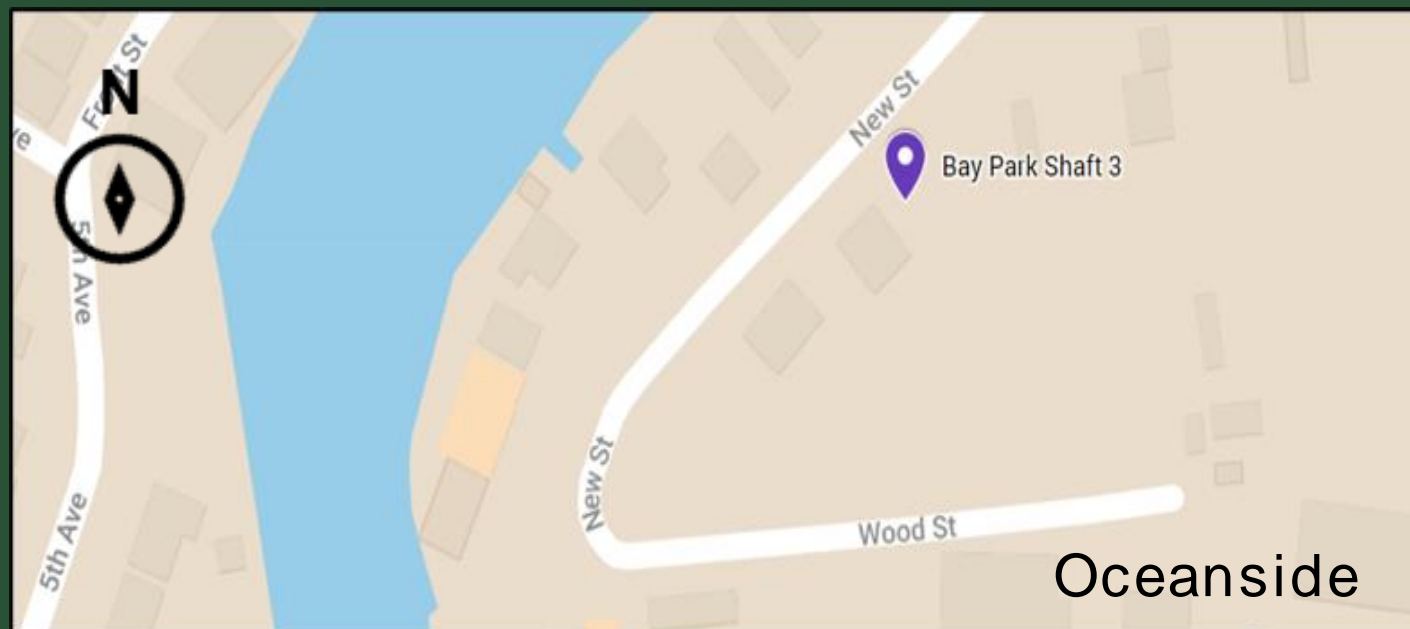
Location: Within the boundaries of Nassau County's Bay Park, at the northeast corner of Marjorie Lane



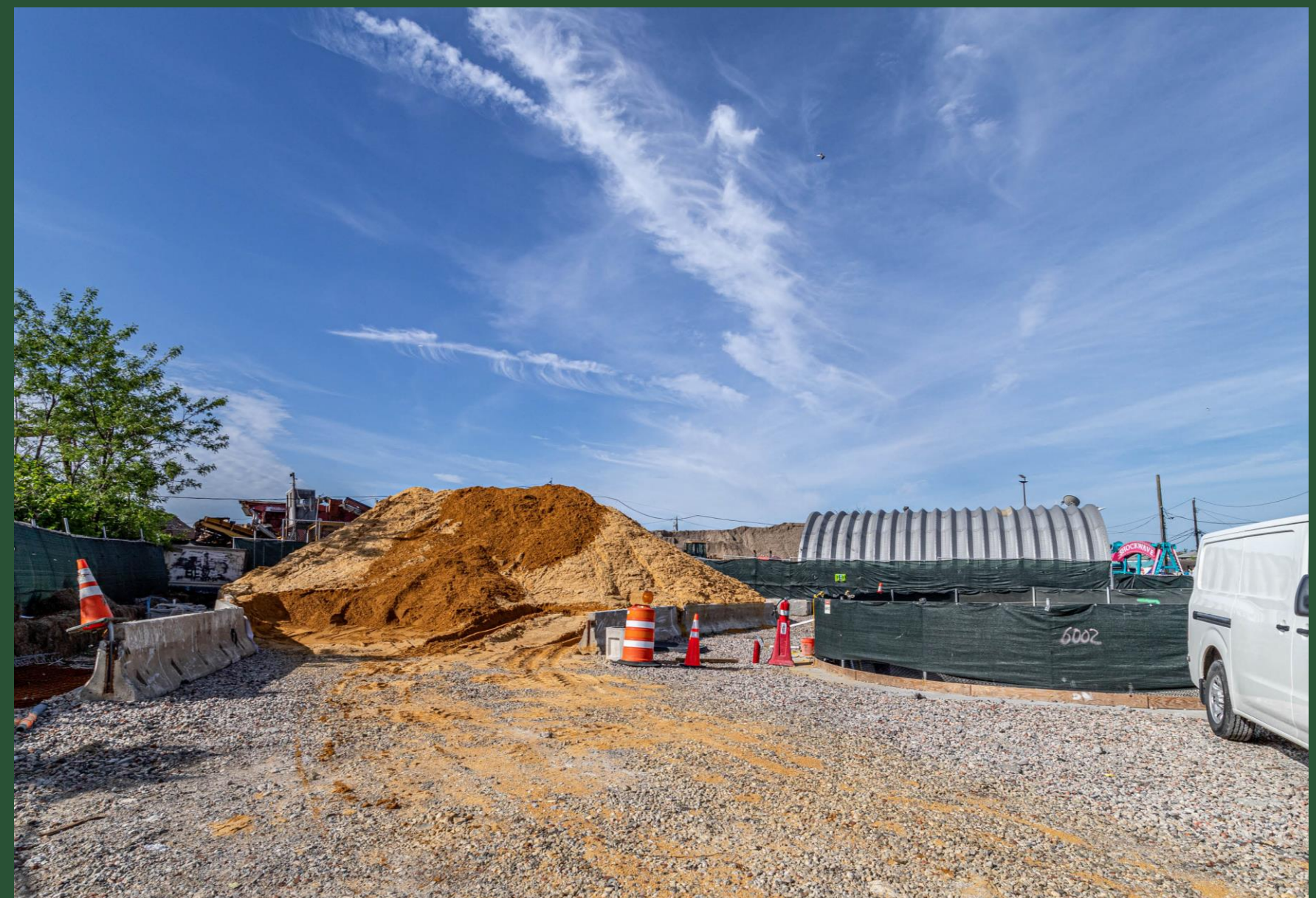
Microtunnel Preparations at BP2 (June 2022)

BAY PARK SHAFT 3 (BP3)

- Shaft excavation and construction of reinforced concrete liner wall are complete.
- Crews are preparing the site to receive the MTBM from BP2.
- Microtunneling from BP3 to BP4 will proceed.



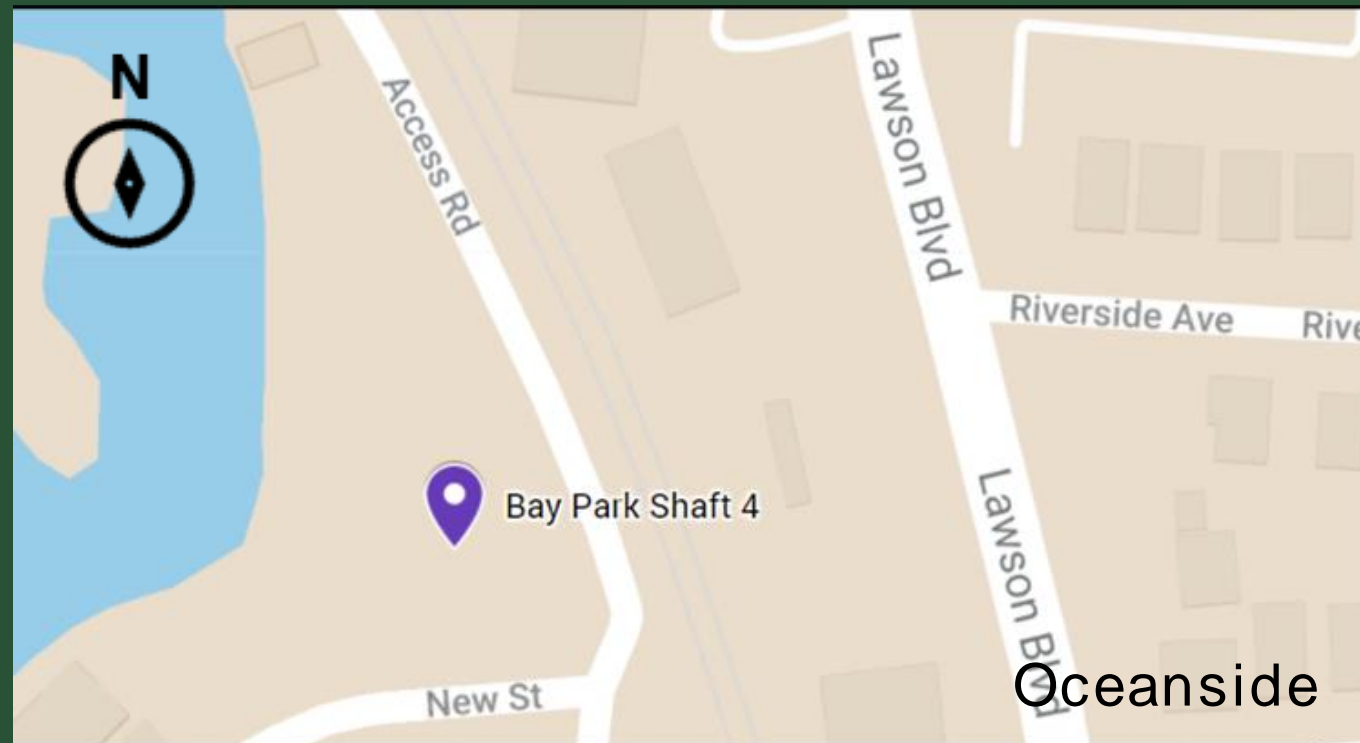
Location: Private property off New Street in Oceanside



Construction Site at BP3 (May 2022)

BAY PARK SHAFT 4 (BP4)

- SOE installation is complete.
- Geotechnical monitoring devices are installed on site.
- Site excavation is ongoing.
- Following excavation, crews will construct reinforced concrete liner wall.



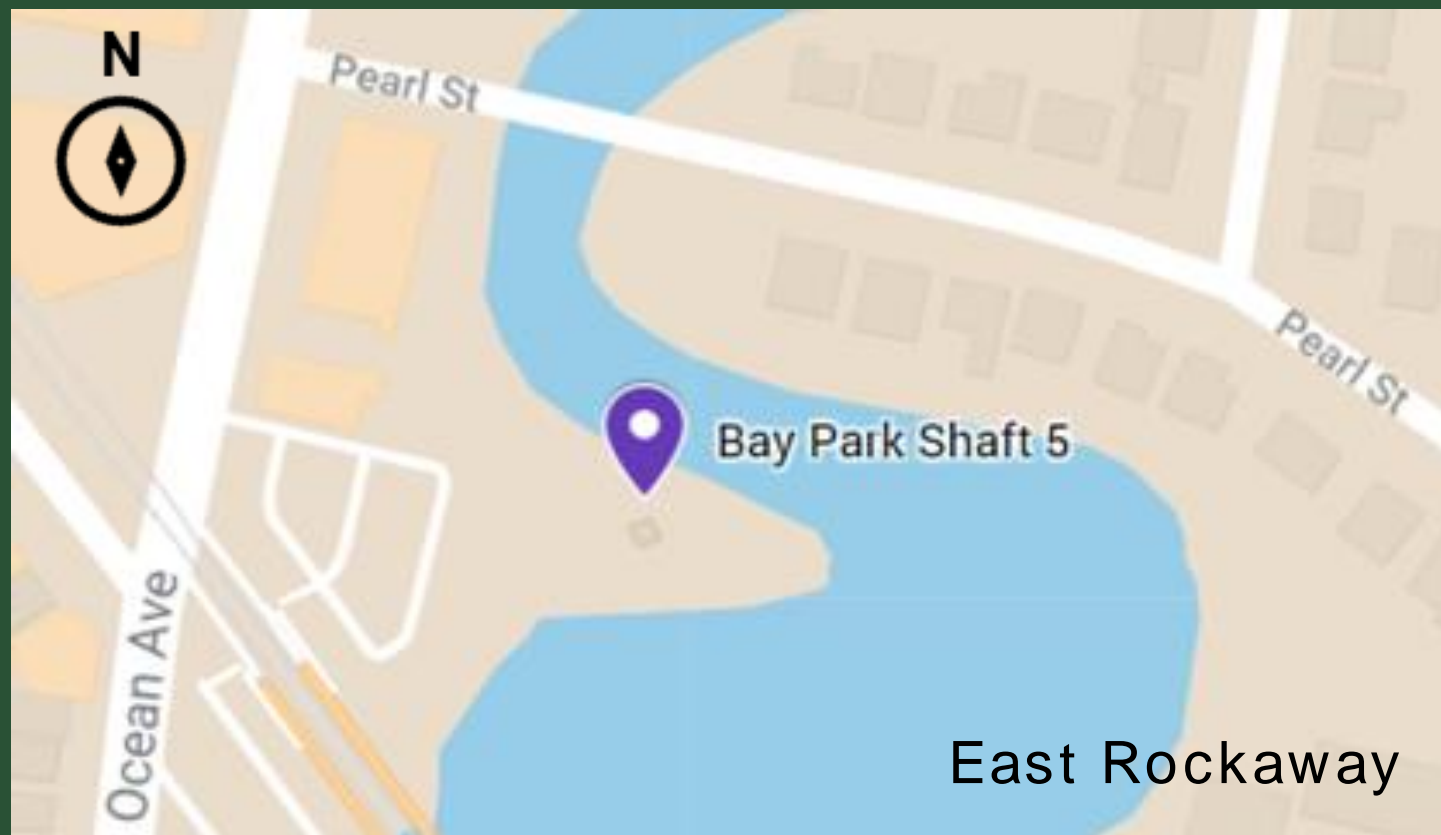
Location: Private property off New Street in Oceanside



Shaft Excavation at BP4 (April 2022)

BAY PARK SHAFT 5 (BP5)

- Site excavation is ongoing.
- To facilitate construction activities, access to 9 parking spaces at Oxbow Park will remain closed until fall 2022.
 - Approx. 60 parking spaces remain open with two-way traffic in and out of the parking lot.
- Oxbow Park will remain closed through approx. fall 2022.



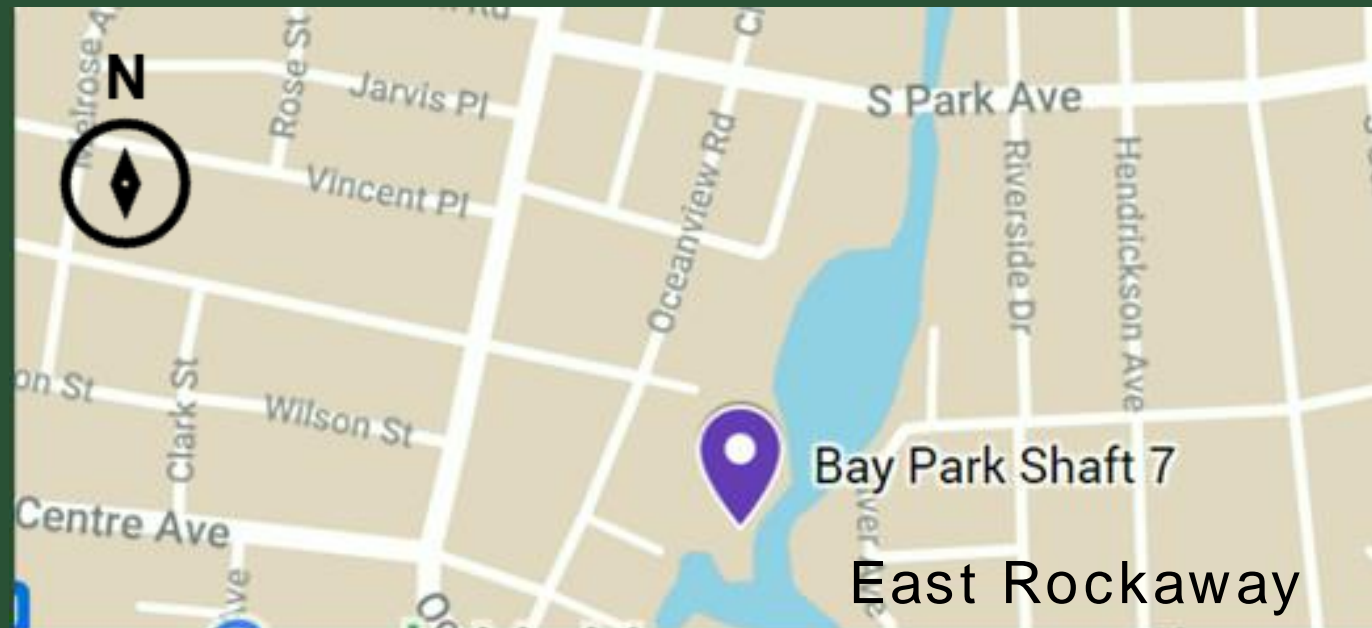
Location: East Rockaway Oxbow Park off Ocean Avenue near the East Rockaway LIRR Station



Excavation at BP5 (June 2022)

BAY PARK SHAFT 7 (BP7)

- Crews will continue to use this site for storage/laydown purposes.
- Installation of SOE and jet grout operations are complete.
- Site preparations for excavation are underway. Excavation is anticipated to begin in August.



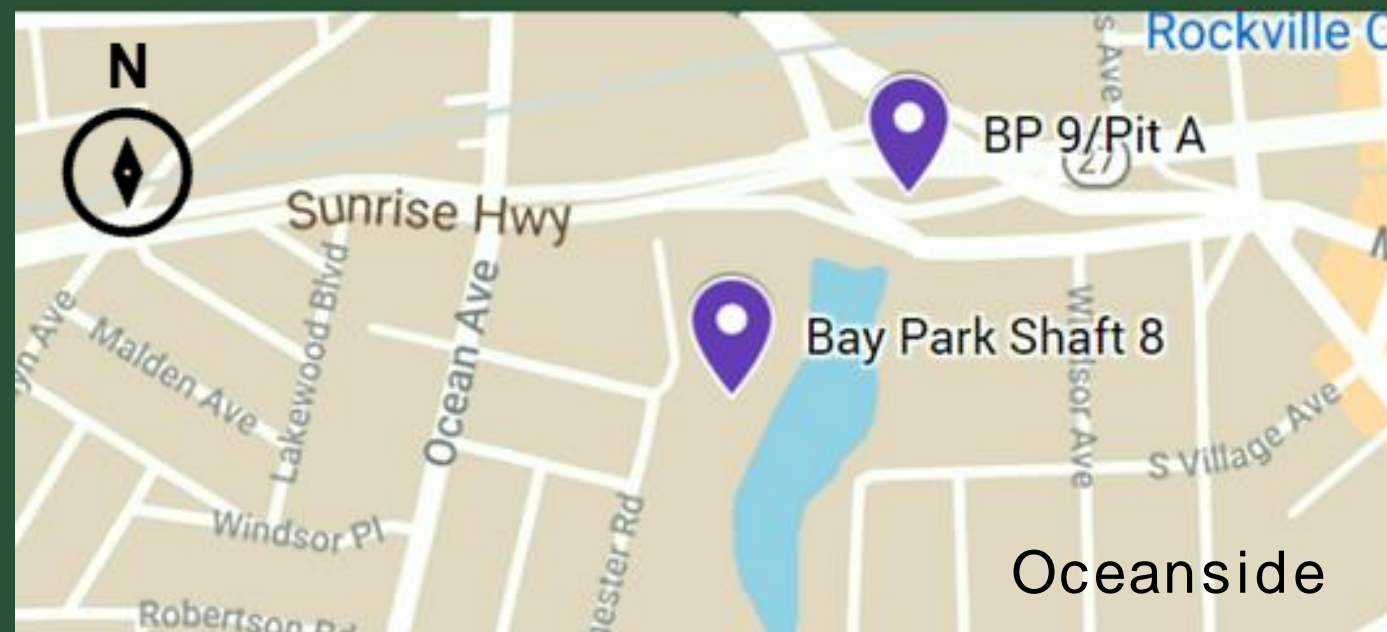
Location: Rockville Centre Department of Public Works Yard off Mill River Avenue



SOE Installation at BP7 (May 2022)

BAY PARK SHAFT 8 (BP8)

- Ongoing coordination with Rockville Centre is underway to minimize impacts to recreational use of Lister Field.
- SOE installation is complete and the shaft is ready for excavation, which is anticipated to begin in August.



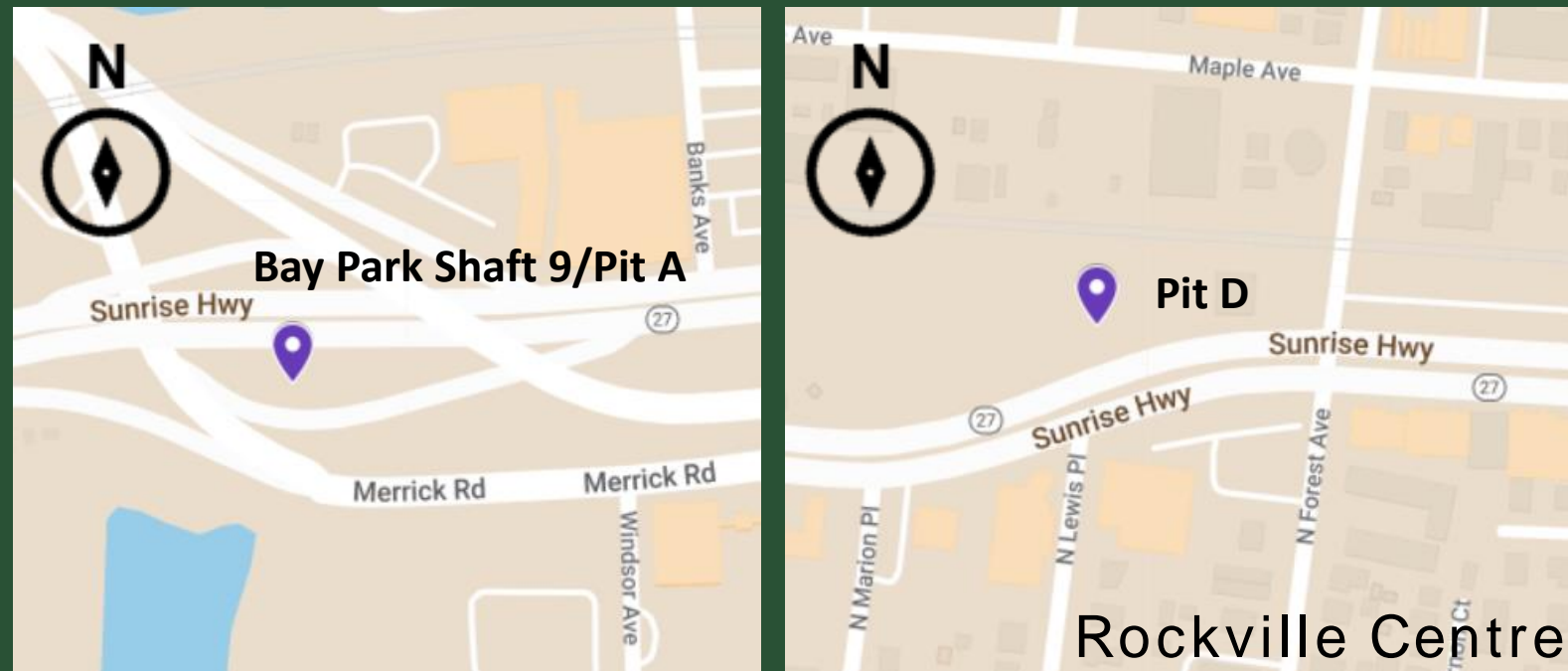
Location: Rockville Centre's Lister Field at the Mill River Complex Park



Shaft Site at BP8 (April 2022)

BAY PARK SHAFT 9/PIT A AND PIT D

- Post jet grout testing is underway.
- Installation of SOE at Pit A is underway.
- The sidewalk in front of Joyce Field, between Morris Avenue and North Forest Avenue, will remain closed for duration of the Project until 2024.
- Eastbound lane on the Merrick Road exit ramp on Sunrise Highway is expected to have intermittent road closures. Flaggers will direct traffic in and out of the work area.



Locations:

BP9 / Pit A: A construction entrance has been established at Sunrise Highway/Merrick Road Interchange

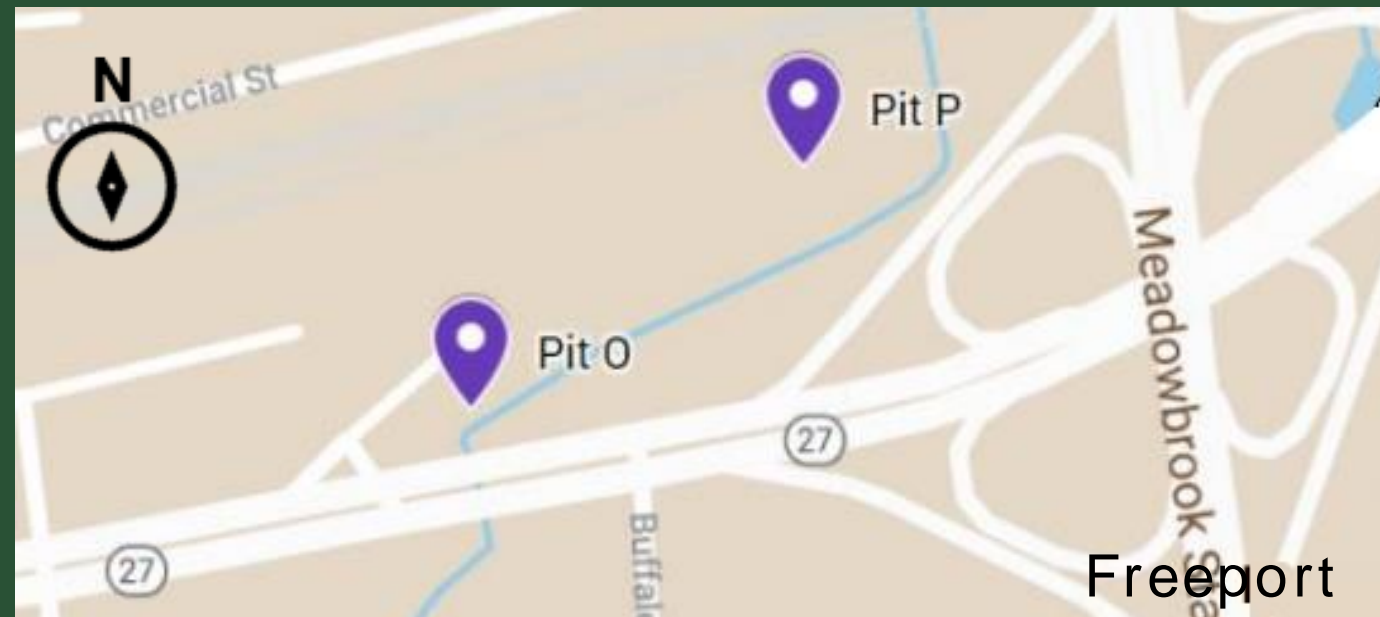
Pit D: A construction entrance has been established at Joyce Field in Rockville Centre Sunrise Highway for storage and laydown of materials



Sheet Installation at Pit A (June 2022)

SUNRISE HWY PITS O AND P

- Sliplining between Pits O and P is complete.
- WBC will continue to use the area for storage and laydown purposes.
- There will be a consistent presence of construction vehicles and crews in the area.



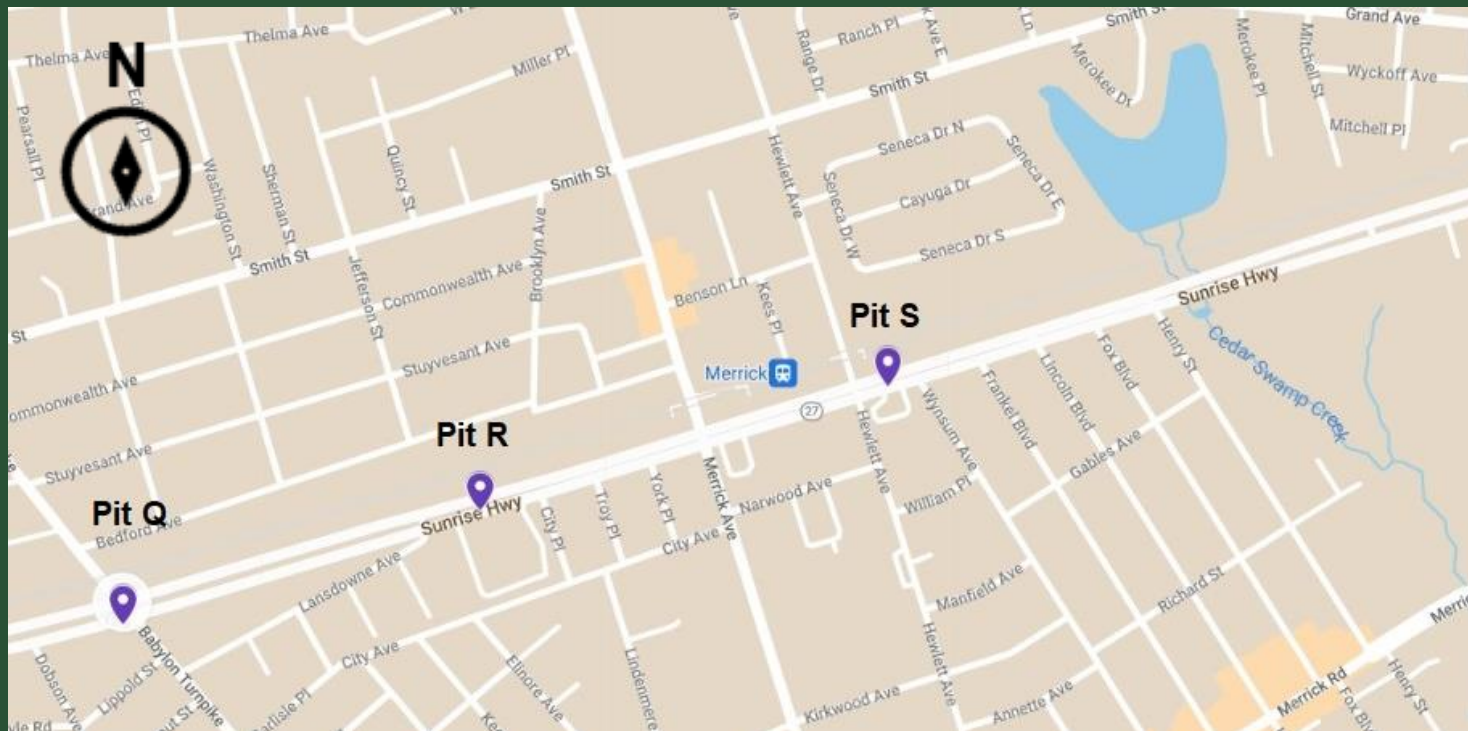
Location: North side of Sunrise Highway just west of the Meadowbrook Parkway



Pit O Site Location (May 2022)

SUNRISE HWY PITS Q-S

- Sliplining from Pits P to Q, Pits Q to R, and Pits R to S is complete.
- Annular pipe grouting will begin in late June/early July.
- Crews continue to troubleshoot and address vibration concerns at Pit R.



Locations:

Pit Q: South side of Sunrise Highway, just west of Babylon Turnpike

Pit R: South side of Sunrise Highway east of the Babylon Turnpike between Lansdowne Avenue and City Place

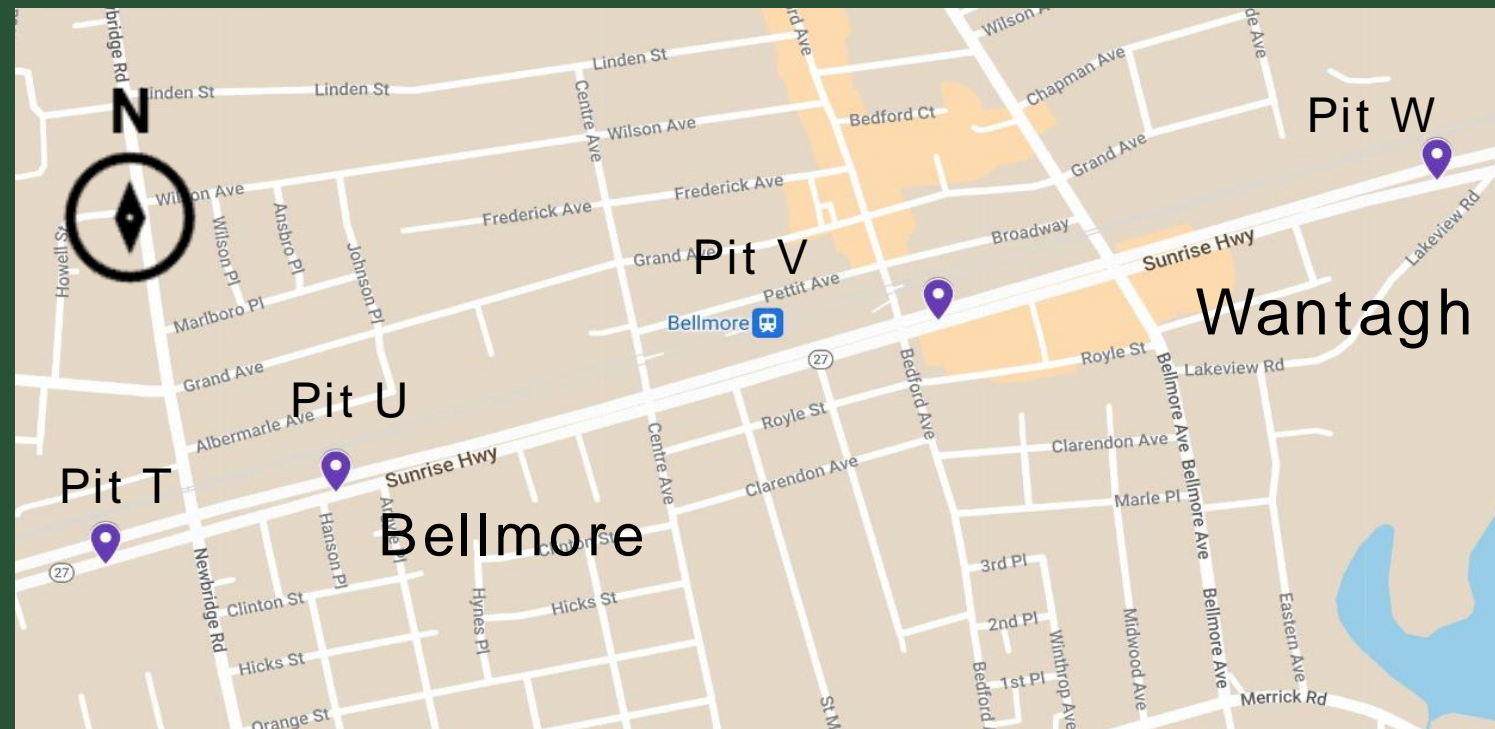
Pit S: South side of Sunrise Highway, east of the Meadowbrook Parkway between Hewlett Avenue and Wynsum Avenue



Pipe Installation at Pit S (June 2022)

SUNRISE HWY PITS T-W

- Pits T and U: Installation of SOE is complete. Sites are being prepared for sliplining.
- Pit V: SOE installation is underway. Installation of SOE can cause periods of noise and vibration that may be noticeable in areas adjacent to the work site.
- Pit W: Crews continue to install Work Zone Traffic Control (WZTC) and Maintenance and Protection of Traffic (MPT) signage in advance of construction anticipated to begin in July. All construction activity will take place during the day.



Locations:

Pit T: South side of Sunrise Highway, just west of Newbridge Road

Pit U: South side of Sunrise Highway, east of Newbridge Road, between Hanson Place and Argyle Place

Pit V: South side of Sunrise Highway, just east of Bedford Avenue.

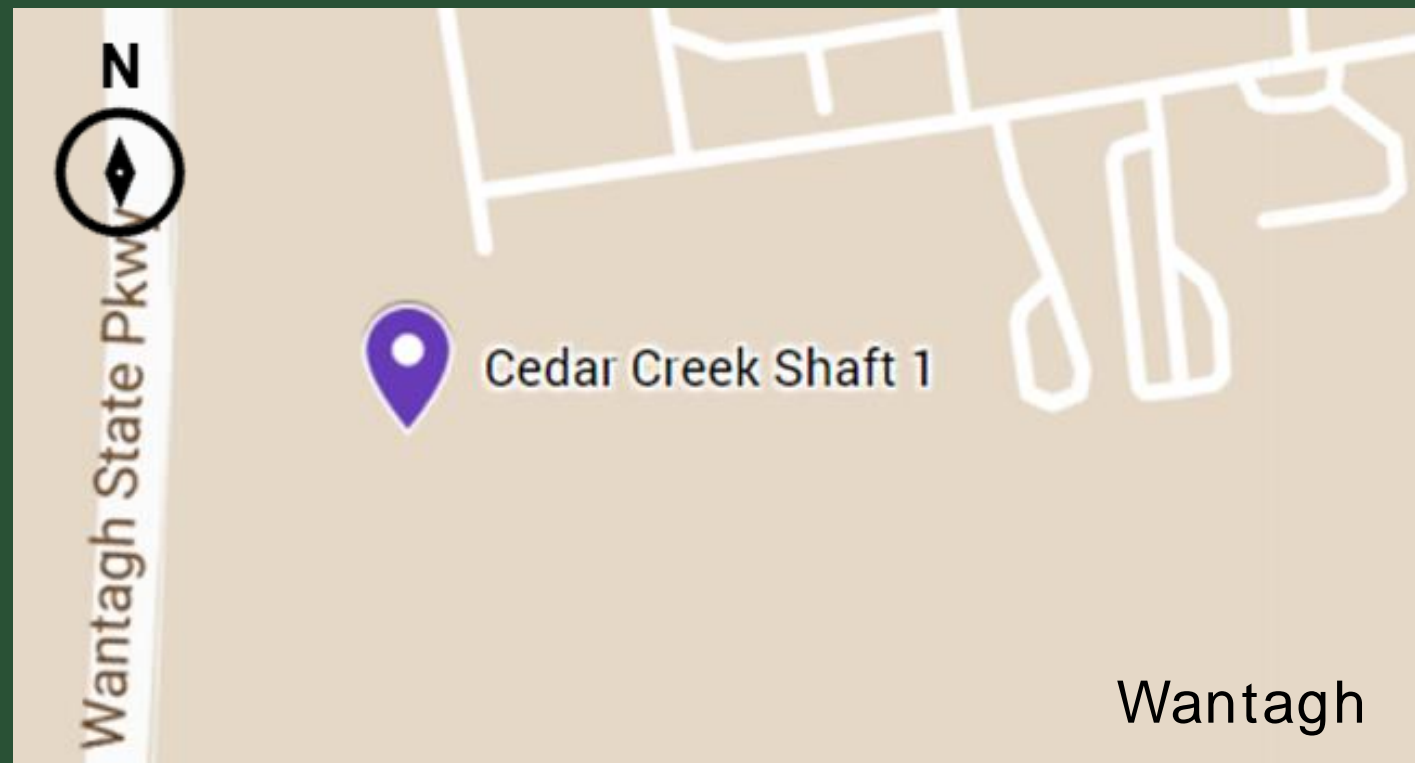
Pit W: South side of Sunrise Highway just west of Lakeview Road in Wantagh.



SOE installation at Pit V (June 2022)

CEDAR CREEK SHAFT 1 (CC1)

- Shaft excavation is complete.
- Crews are constructing a pipe base trench from CC1 to the Cedar Creek receiving tank.
- Work at this location should have no noticeable impact to Cedar Creek Park users.



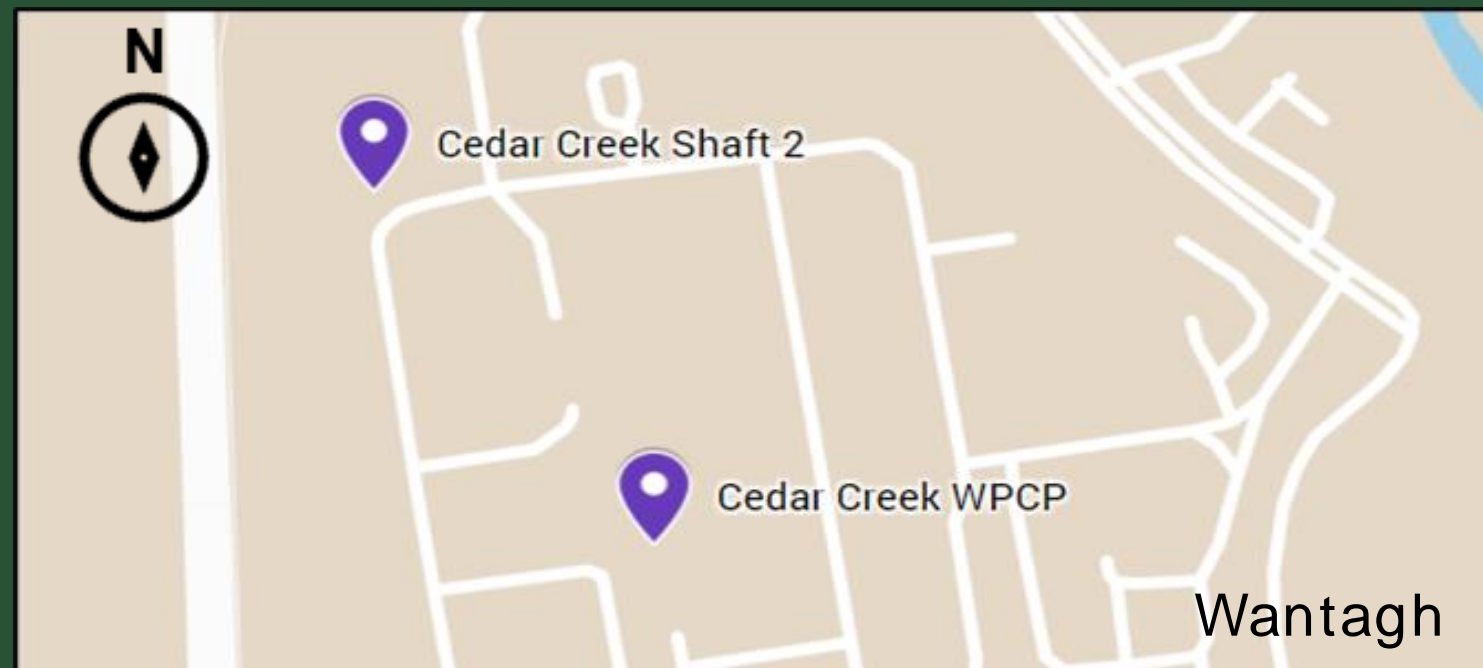
Location: Within footprint of the Cedar Creek Water Pollution Control Plant (WPCP)



Shaft Construction at CC1 (May 2022)

CEDAR CREEK SHAFT 2 (CC2)

- Shaft excavation is complete.
- P.O.S.E.I.D.O.N., the second MTBM, is being assembled in preparation for microtunneling that is anticipated to begin in July.
- MTBM will microtunnel from CC2 to CC1.



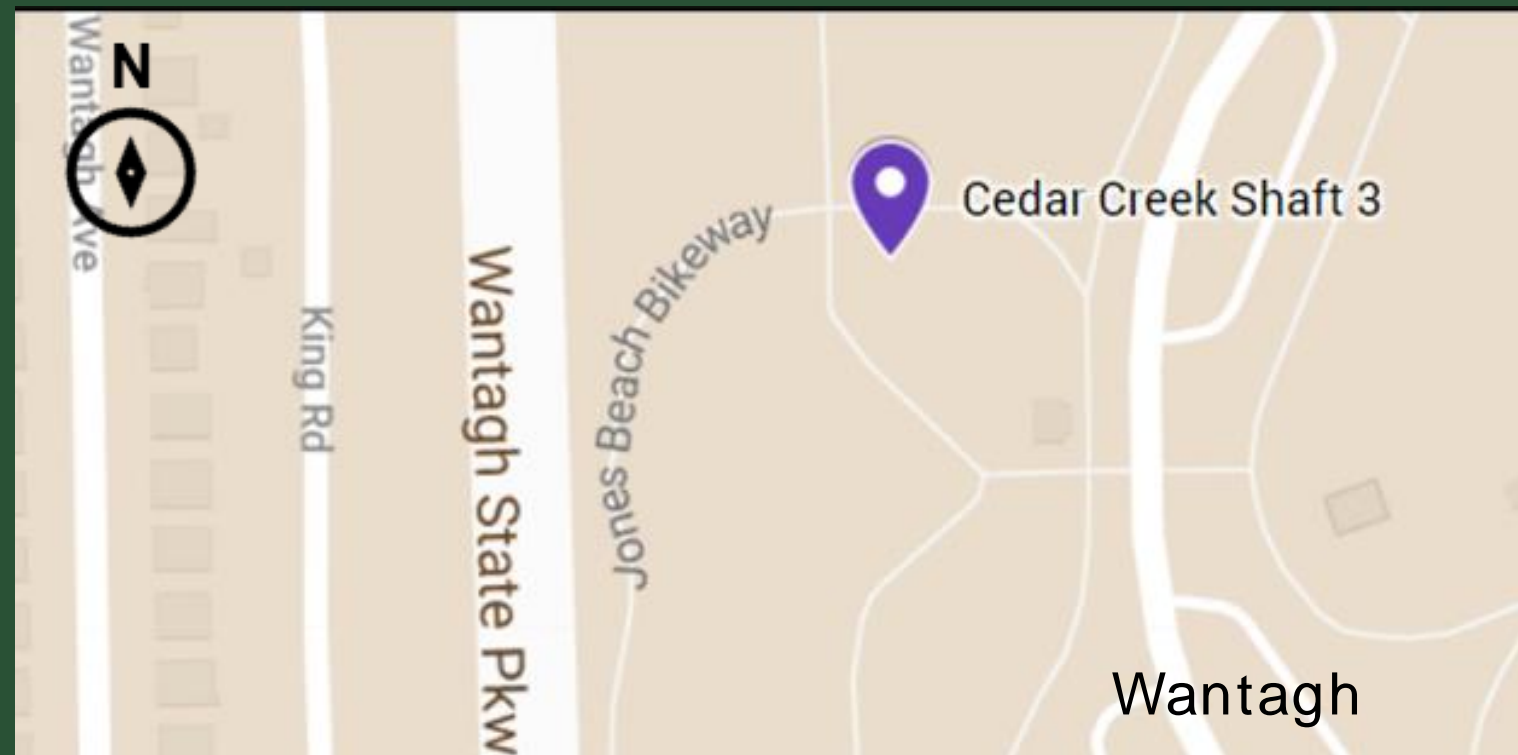
Location: Within the footprint of the Cedar Creek WPCP



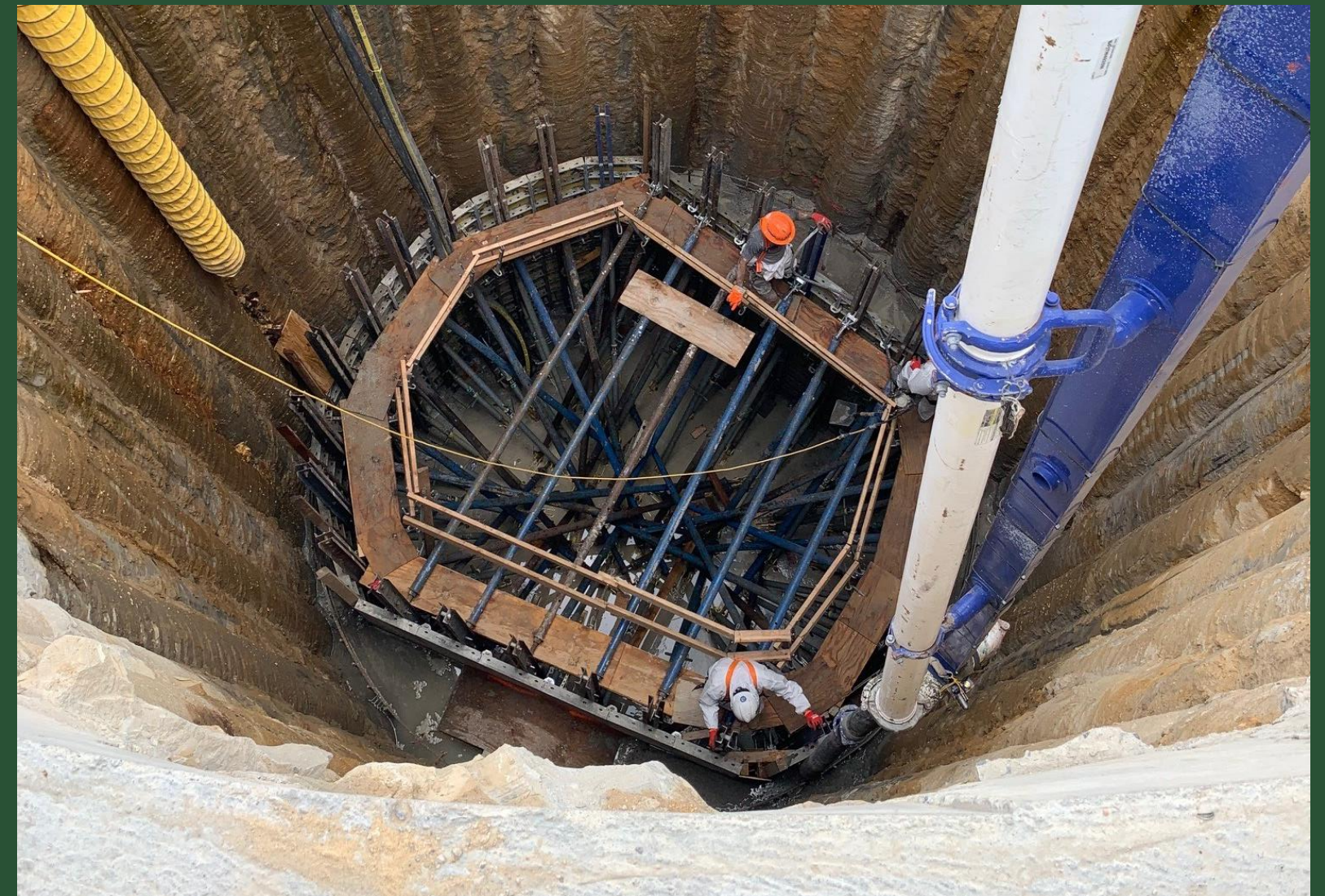
P.O.S.E.I.D.O.N. MTBM at CC2 (June 2022)

CEDAR CREEK SHAFT 3 (CC3)

- Site is being prepared to receive the MTBM from CC2.
- Jones Beach Bike Path is expected to remain open throughout construction.
- The public should be mindful of construction vehicles as they enter and exit the park and follow signage and/or direction from flaggers.



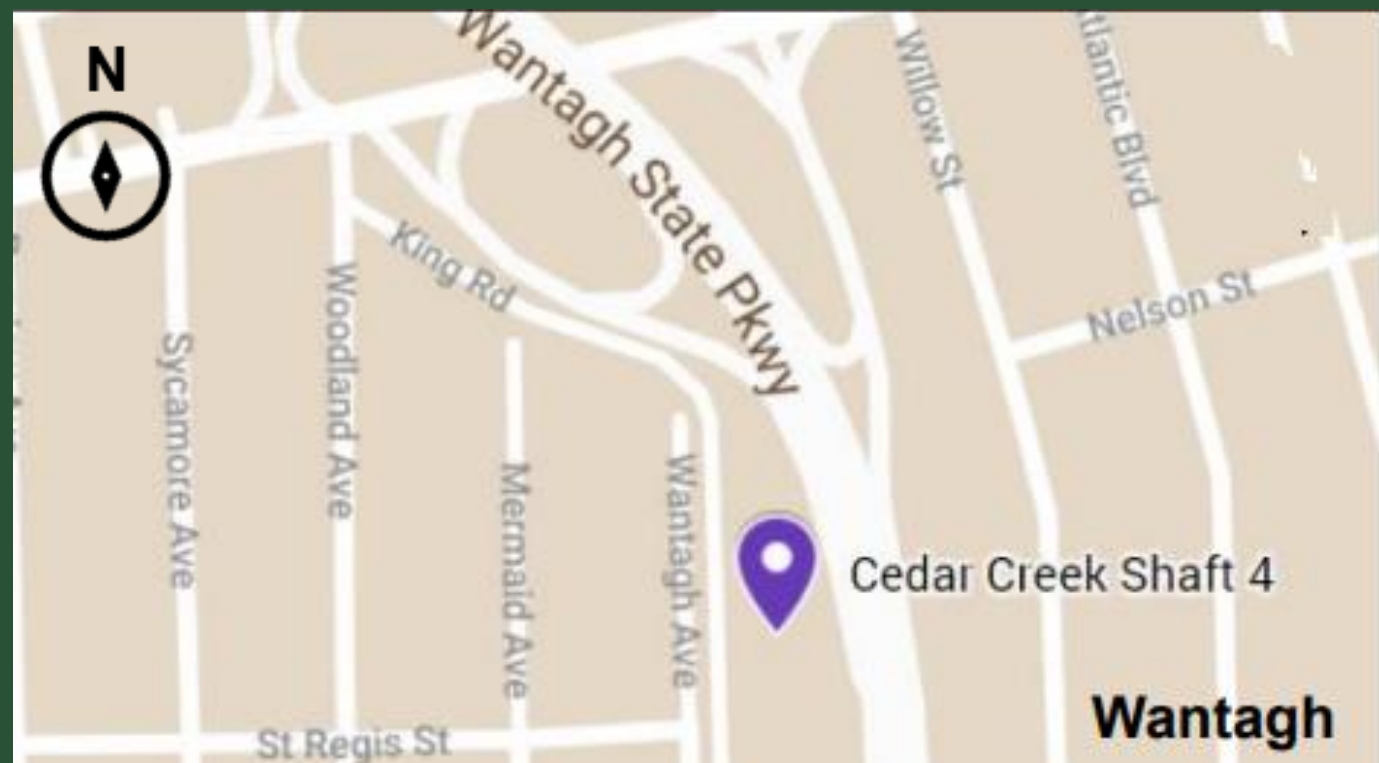
Location: Cedar Creek Park near the entrance to the Wantagh State Parkway and Jones Beach Bike Path



Rebar Installation at CC3 (May 2022)

CEDAR CREEK SHAFT 4 (CC4)

- SOE and jet grout installation are complete.
- Preparations for post jet grout testing are underway.
- Site excavation will proceed.



Location: Off King Road adjacent to Wantagh Avenue/St. Regis Street



Ring Beam Installation at CC4 (June 2022)

CEDAR CREEK SHAFTS 5 (CC5) AND 6 (CC6)

- At CC5, excavation will follow CC4.
- At CC6, SOE installed, shaft is prepared for excavation. Excavation will follow CC5.



Locations:

CC5: At the intersection of Brookside Avenue and Linden Street just west of the Wantagh State Parkway

CC6: Off Lakeview Road south of Sunrise Highway



Construction Site at CC5 (April 2022)

PROTECTION OF TRAVELING PUBLIC AND WORK ZONES

- The Project team has deployed WZTC and MPT signage to protect public safety and assist motorists and pedestrians around WBC work areas.
- Variable Message Signage (VMS) boards are deployed in advance of lane closures.
- Weekly “Before You Go” Facebook posts highlight lane closures for the week ahead.
- The Project team distributes canvassing notices to nearby residents and businesses, as needed.



TREE REMOVAL AND RESTORATION

- Limited removal of vegetation and trees facilitates construction across the Project alignment.
- NYSDEC and NCDPW are committed to – at a minimum – replacing trees removed during construction.
- Tree restoration plan and schedule for replanting are being developed.





SPOTLIGHT ON SAFETY & CONSTRUCTION TIDINESS

- All work pits and shafts are enclosed and protected with fencing, inaccessible to the public.
- WBC is following all OSHA guidelines.
- Quality control team is present during each operation.
- Emergency services briefed monthly including onsite visits to shaft/pit locations.
- Ongoing coordination with WBC safety to establish protocol for emergency situations.

STAKEHOLDER ENGAGEMENT



COMMUNITY INFORMATION CENTER (CIC)

- The CIC, located at 265 Sunrise Highway, Rockville Centre is open.
- WBC offers in-person and virtual meetings from the CIC.
- Project representatives present:
 - M, W and F: 8am - 3pm
 - Tu and Th: 12pm - 7pm
 - Every other Sat: 9am - 12pm
- Available to meet by appointment.
- Please visit the Project website for updated hours.



COMMUNITY OUTREACH PROGRAM

- Construction monthly look-aheads and e-blasts.
- Door-to-door and digital canvassing notices.
- “Before You Go” Facebook campaign posted weekly.
- Quarterly public information sessions.
- Dedicated 24/7 project hotline, email, Facebook, and website.
- “What’s Happening Here” signs at each work location.
- Attendance at community events.





CONTACT US

Community Information Center
265 Sunrise Highway
Rockville Centre, New York 11570
*See website for hours

Email

BayParkConveyance@gmail.com

24/7 Project Hotline

(516) 252-6121

Website

www.BayParkConveyance.org

Facebook

@BayParkConveyance



QUESTION AND
ANSWER SESSION

34

THANK YOU!



35