



# The Bay Park Conveyance Project

A Western Bays Resiliency Initiative

**Nassau County Fire Commission Technical Rescue**  
**April 13, 2022**

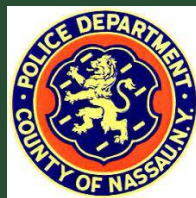
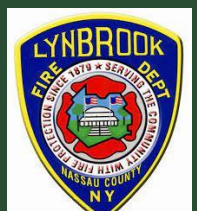
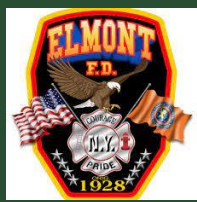


Department of  
Environmental  
Conservation





# Welcome to our First Responders





# Agenda

- 1. Project Background – Why are we here?**
- 2. Fire Service/Emergency Services Role**
- 3. Construction Sites Locations – Whose District?**
- 4. Question and Answer Session**

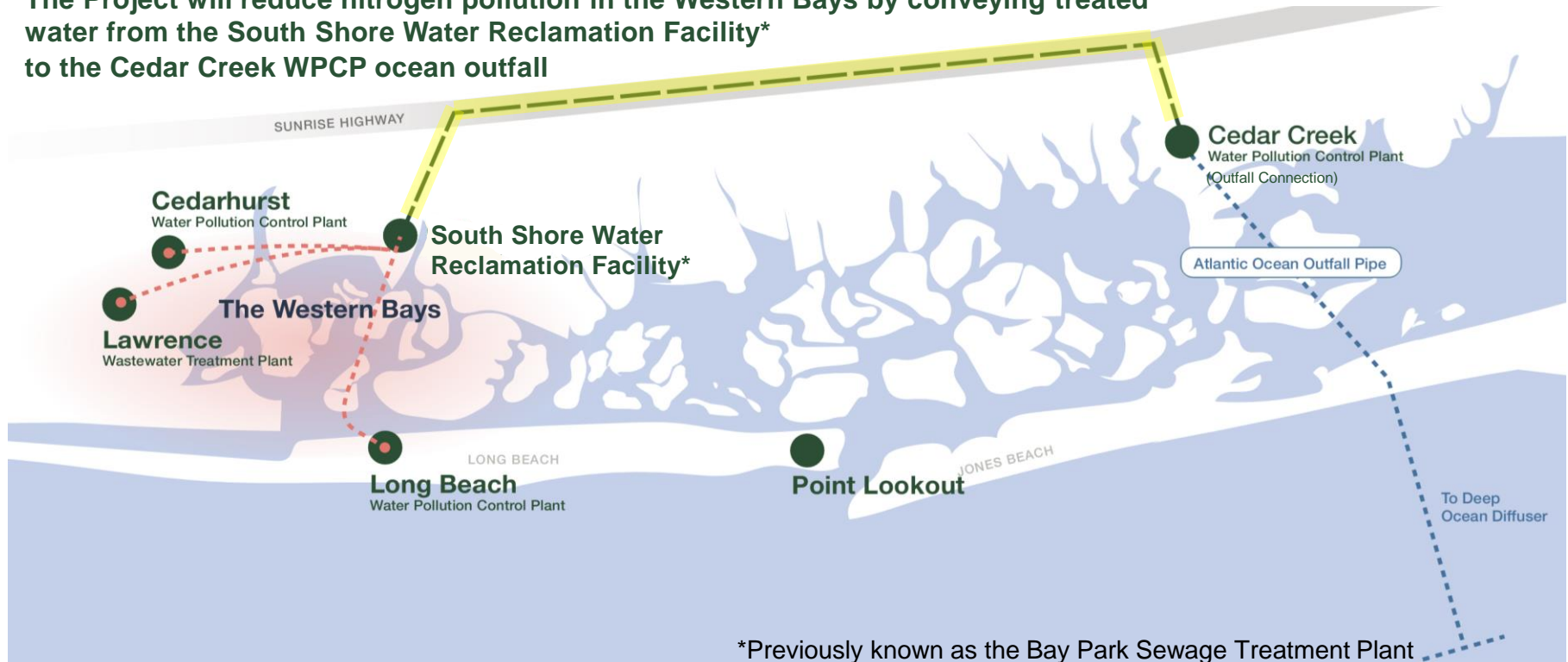




## Project Background

# The Bay Park Conveyance Project

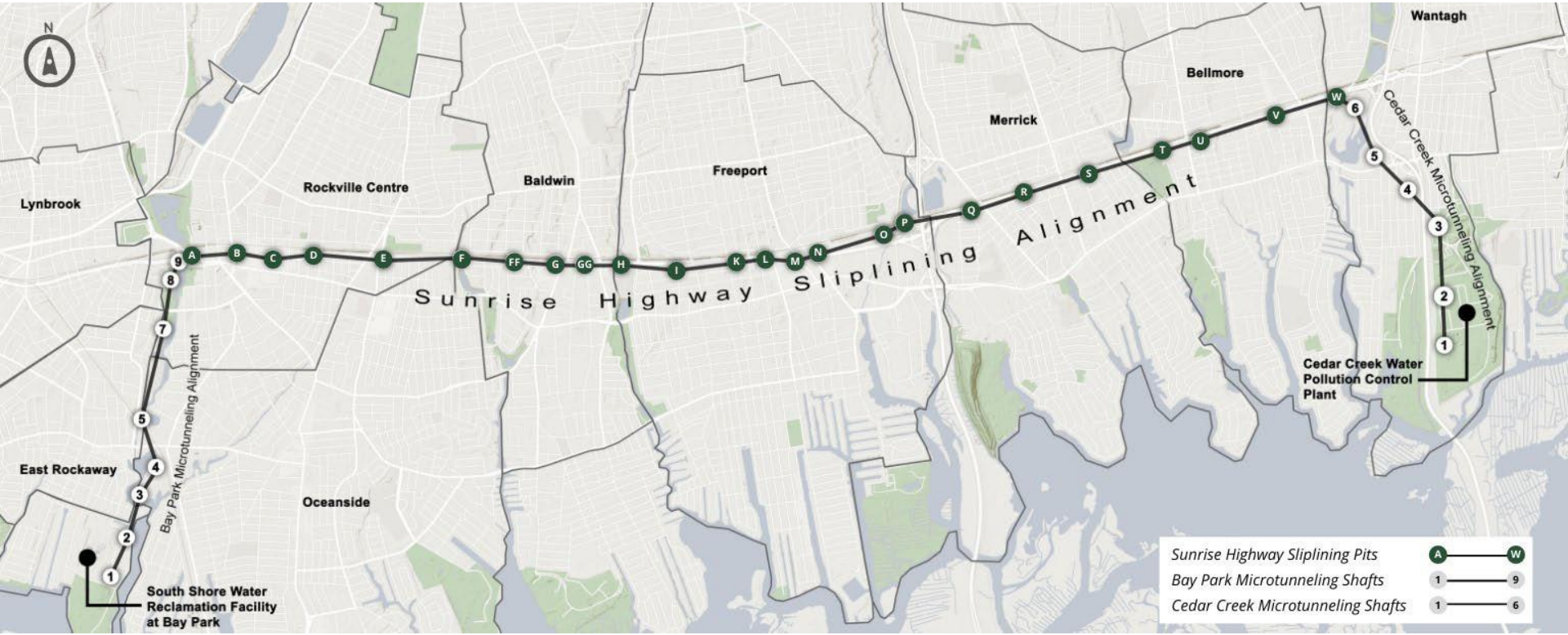
The Project will reduce nitrogen pollution in the Western Bays by conveying treated water from the South Shore Water Reclamation Facility\* to the Cedar Creek WPCP ocean outfall



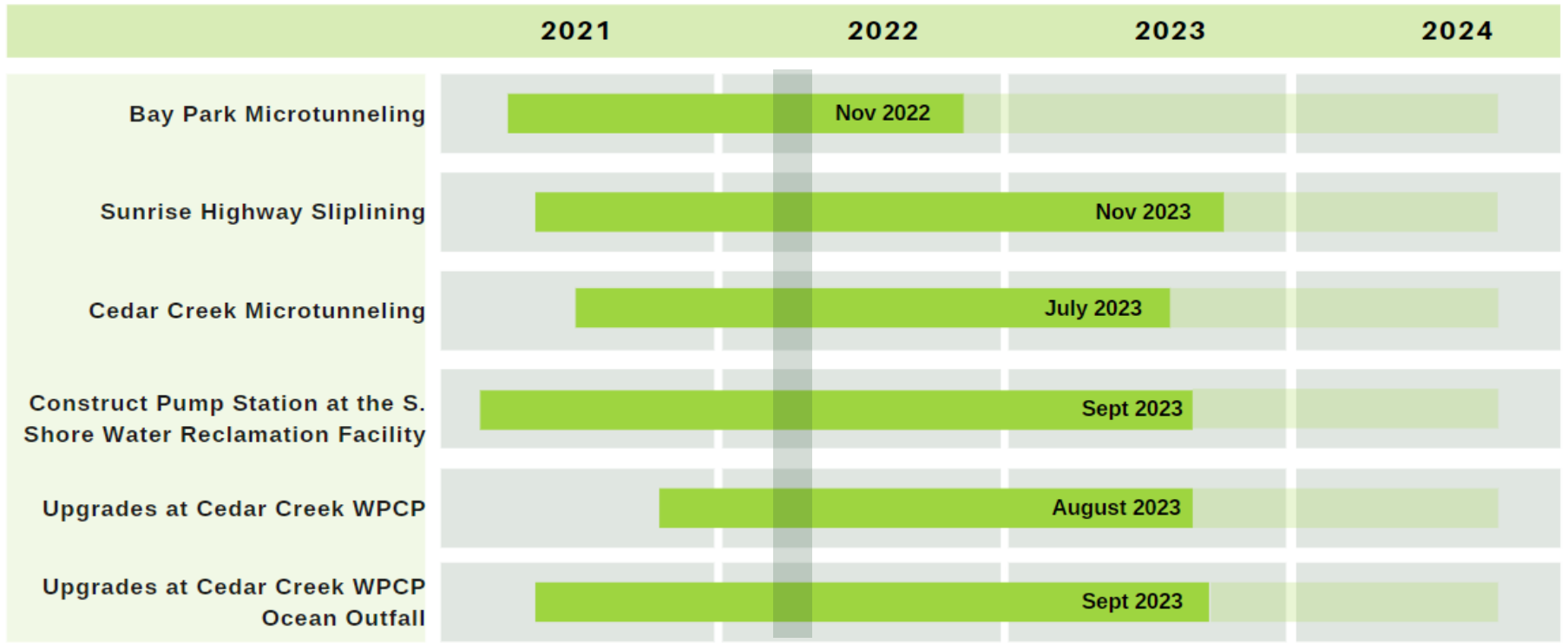
\*Previously known as the Bay Park Sewage Treatment Plant



# Bay Park Conveyance Project Overview



# Project Timeline

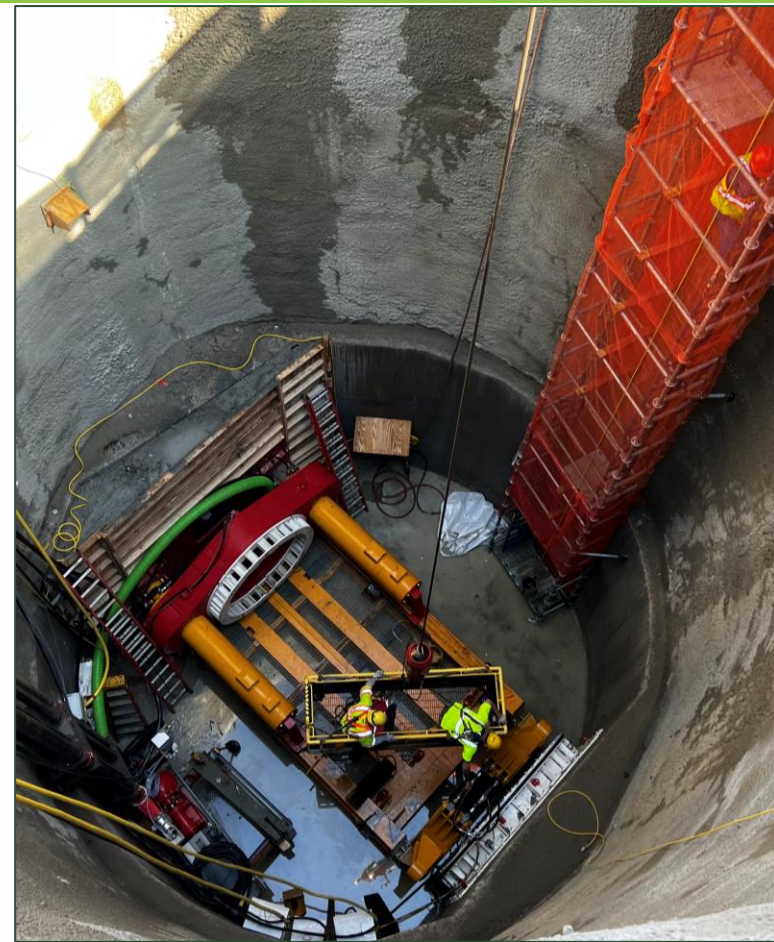


**We Are Here**

*Final Acceptance Aug 2024*

# Construction Techniques

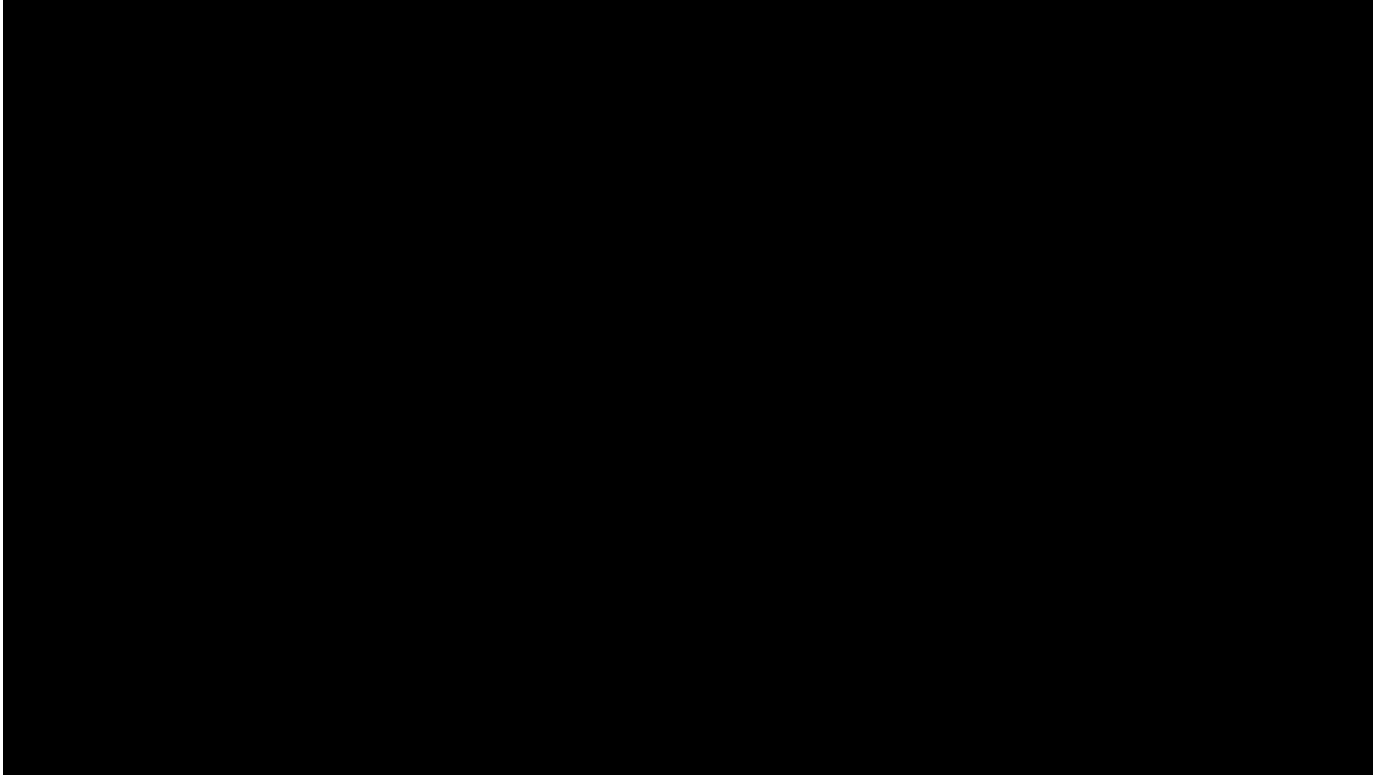
- **Microtunneling** - A technique used to install piping deep into the ground
- **Sliplining** - Utilizes existing infrastructure by inserting a new pipe into an existing pipe
- **Support of Excavation (SOE)** - Used to support the earth during excavation
- **Jet Grouting** - A technique used as a means for groundwater control



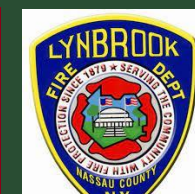
- *Jacking Station for Microtunnel Boring Machine named MARSH-MELLOW, March 2022*



# Construction Techniques – Microtunneling



# Emergency Services

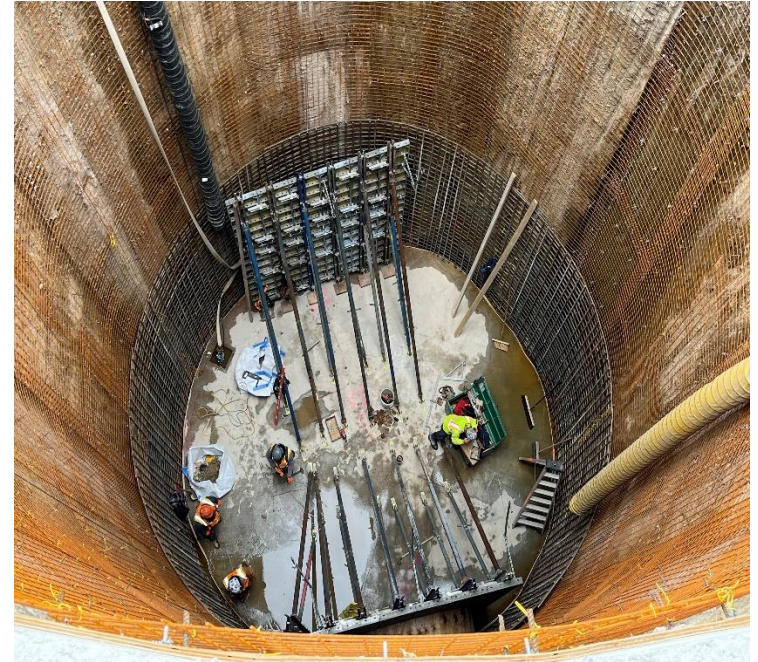




# The Bay Park Conveyance Project

Emergency Services should be aware of the following:

- Multiple work locations
- Underground construction
- Shafts can be 25 to 62 feet below grade
- Pits located in active roadway
- Equipment and material staging
- Daytime and nighttime shifts
- Limited access to certain locations



# The Bay Park Conveyance Project – Emergency Procedure

Should an emergency situation arise:

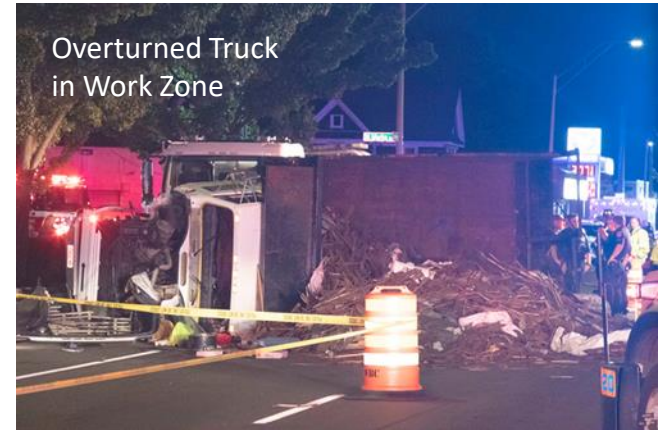
- *WBC Employees are instructed to call 911 AND 516-742-3300 (Nassau County Fire Communications - FireCom).*
- *The “**Rescue Team**” will be the fire department in whose district the emergency is located along with the Nassau County Technical Response Team, Nassau County Police ESU and the Nassau County Fire Marshal’s Office.*
- We request that local rescue services visit all project locations in their district to familiarize their teams with the current conditions at the work locations.
- WBC will update the rescue teams of any changing conditions along the project alignment. This information will also be presented at WBC’s Elected official and First Responder meeting.



# The Bay Park Conveyance Project – WBC Response

Information relayed to the 911 Operator / FireCom Dispatcher is critical and will be as detailed as possible:

- ✓ Location of incident – *Be clear and specific about location.*
  - Example: “BP-1”, “Bay Park Treatment Plant”, “2 Marjorie Lane”
- ✓ Type of incident –
  - Example: “Injured worker at the bottom of the shaft at BP-1.”
- ✓ Type of injury/illness (if known) –
  - Example: “Worker with injured leg.” or “Worker unconscious.”



Personal will wait for emergency services to arrive and assist with any request or information regarding the operation.



# Construction Site Locations

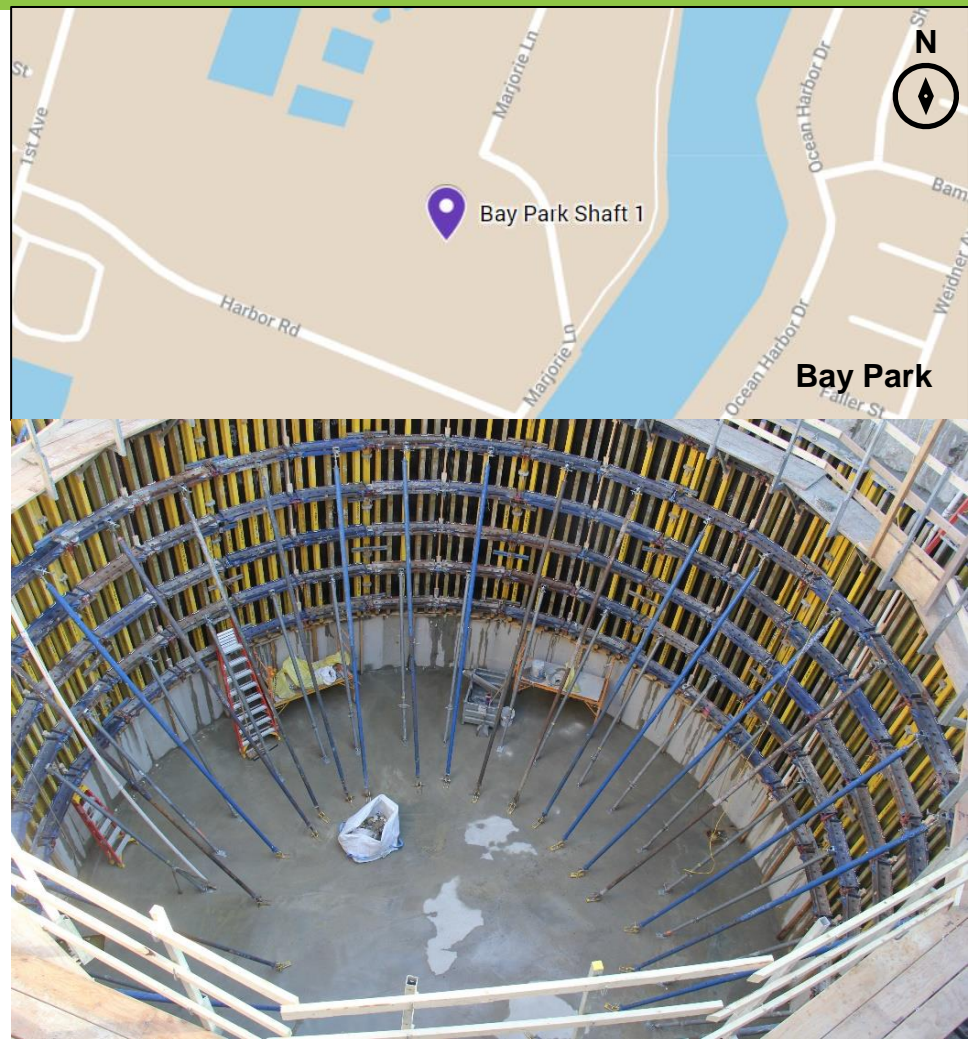


# Bay Park Shaft 1 (BP1)

**Location:** Within the footprint of the South Shore Water Reclamation Facility at Bay Park.

- Next to BP1, crews are constructing a new pump station, a wet well, and a diversion structure.
- Shaft is ready for Microtunneling.

**East Rockaway Fire Dept. – 4<sup>th</sup> Battalion**

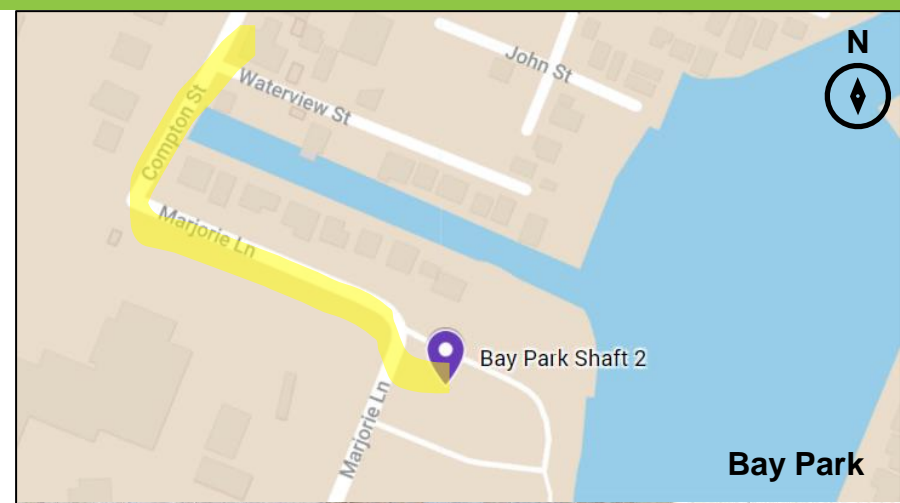


## Bay Park Shaft 2 (BP2)

**Location:** Within the boundaries of Nassau County's Bay Park, at the northeast corner of Marjorie Lane.

- Trucks continue to transport materials including segments of large pipe to BP2 in preparation for microtunneling.
- Beginning this month, the first of two MTBMs, MARSH-MELLOW, will microtunnel seven days a week.
- Park users will observe an increase in construction equipment and vehicles between Marjorie Lane and the boat launch.

**East Rockaway Fire Dept. 4<sup>th</sup> Battalion**

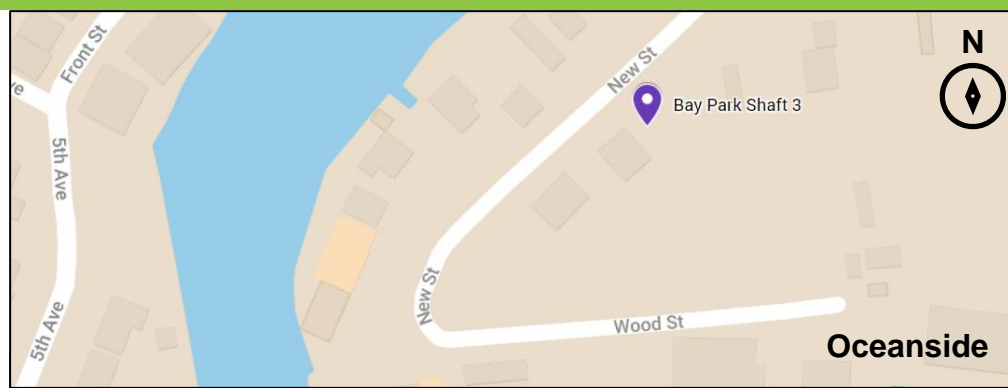


## Bay Park Shaft 3 (BP3)

**Location:** On private property off New Street  
in Oceanside.

- Crews have completed installation of SOE and jet grout operation.
- Crews are constructing a reinforced concrete liner, a structure that supports pipe jacking.
- Preparation for microtunneling is ongoing.

**Oceanside Fire Dept. – 2<sup>nd</sup> Battalion**



*Excavation at BP3, January 2022*

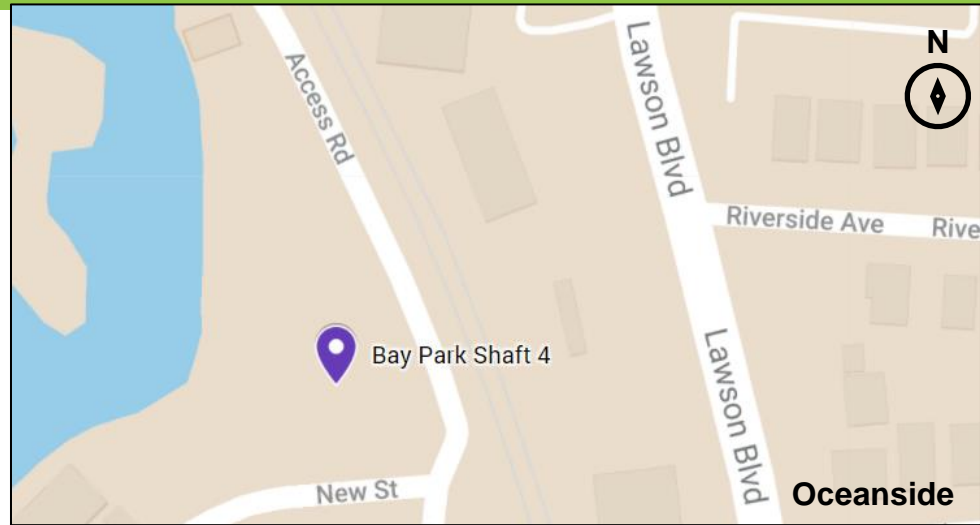


# Bay Park Shaft 4 (BP4)

**Location:** Off New Street in Oceanside.

- Crews will install geotechnical monitoring devices this month.
- Preparation for mass excavation has begun.

**Oceanside Fire Dept. – 2<sup>nd</sup> Battalion**



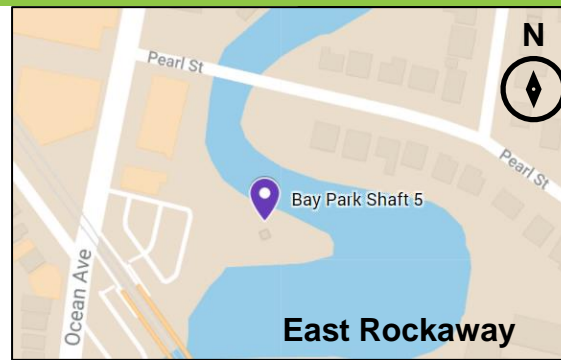
*Guide Wall Construction at BP4, January 2022*

# Bay Park Shaft 5 (BP5)

**Location:** East Rockaway Oxbow Park, off Ocean Avenue near the East Rockaway LIRR Station.

- Crews continue to install geotechnical monitoring devices.
- Site is being prepared in advance of excavation which is anticipated to begin in May.
- To facilitate construction activities, access to 9 parking spaces at Oxbow Park will remain closed until fall 2022.
- The parking lot's approx. 60 additional spaces will remain open with two-way traffic into and out of the parking lot.
- Oxbow Park will remain closed through approximately fall 2022.

**East Rockaway Fire Dept. – 4<sup>th</sup> Battalion**



*SOE Installation at BP5, December 2021*

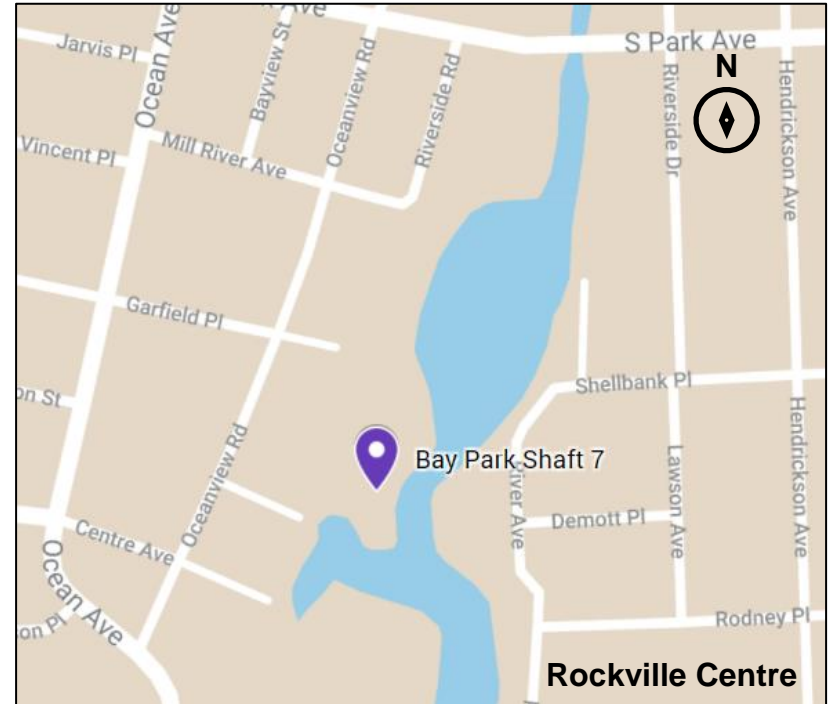


## Bay Park Shaft 7 (BP7)

**Location:** Rockville Centre Department of Public Works Yard, off Mill River Avenue and Riverside Road.

- Crews are preparing the area and will continue to use the site for storage/laydown purposes in advance of SOE installation.

**Rockville Centre Fire Dept. – 4<sup>th</sup> Battalion**

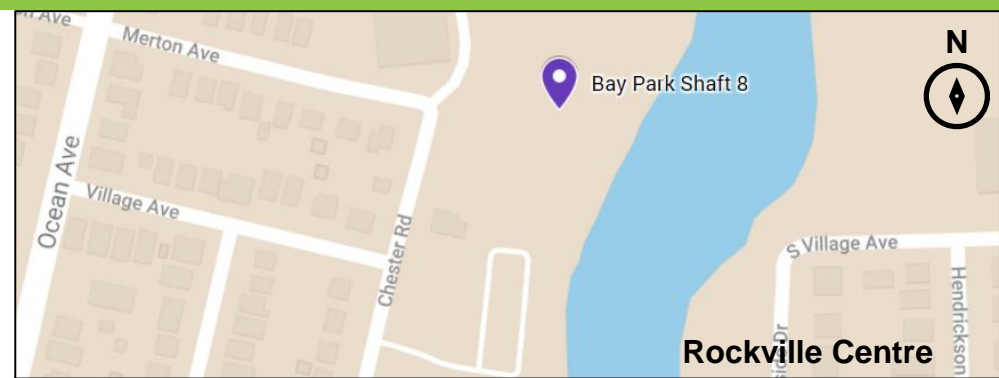


# Bay Park Shaft 8 (BP8)

**Location:** Rockville Centre's Lister Field,  
at the Mill River Complex Park.

- Ongoing coordination with Rockville Centre is taking place to minimize impacts to the recreational use of Lister Field.
- Shaft excavation to follow CC2/CC3, which is planned for Q4 2022.

**Rockville Centre Fire Dept. 4<sup>th</sup> Battalion**



*SOE Installation at BP8, December 2021*

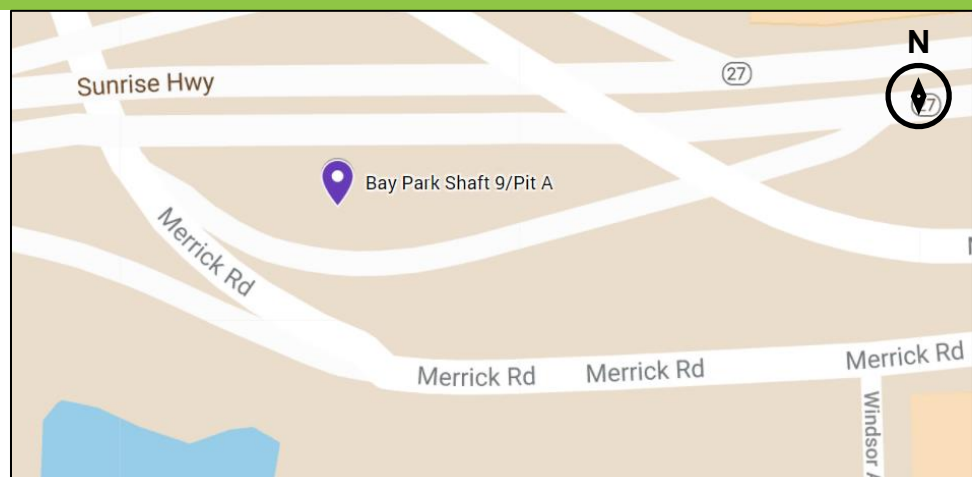


# Bay Park Shaft 9 (BP9)

**Location:** Sunrise Highway / Merrick Road  
Interchange in Rockville Centre.

- A construction entrance has been set at BP9/Pit A.
- Maintenance and Protection of Traffic (MPT) is complete

**Rockville Centre Fire Dept. 4<sup>th</sup> Battalion**

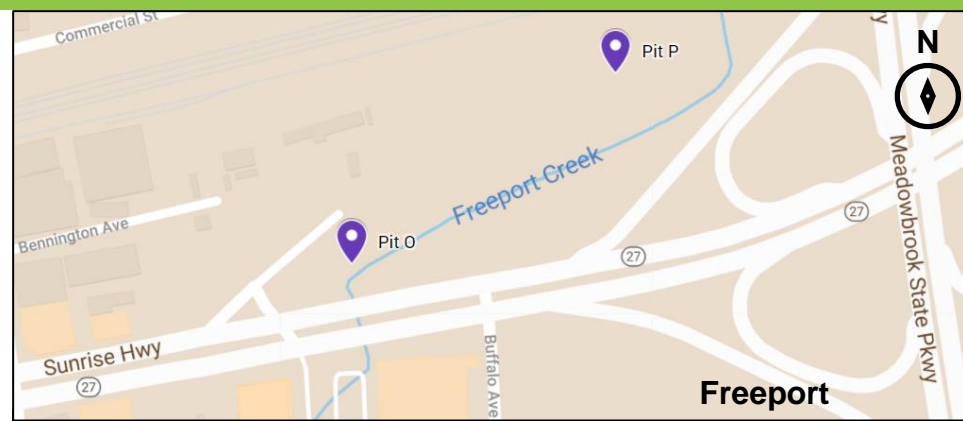


# Sunrise Highway Pits O and P

**Location:** Freeport, on the north side of Sunrise Highway, just west of the Meadowbrook Parkway.

- Crews continue “pipe jacking” between Pits O and P. One piece remaining.
- Work will be performed off the roadway on the north side of Sunrise Highway and is not expected to impact the traveling public.
- There will be an increase in construction vehicles and crews in the area.

**Freeport Fire Dept. – 2<sup>nd</sup> Battalion**



*Excavation at Pit O, January 2022*

# Sunrise Highway Pits Q, R and S

## Locations:

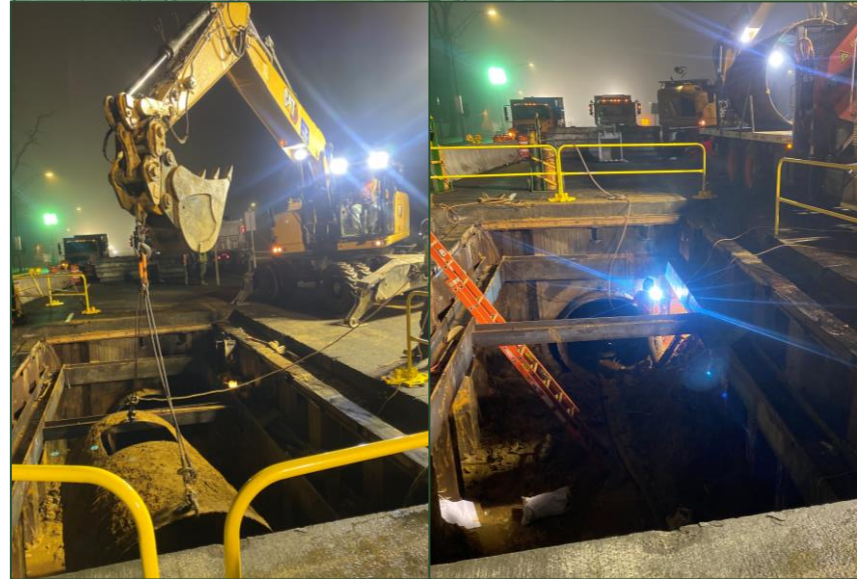
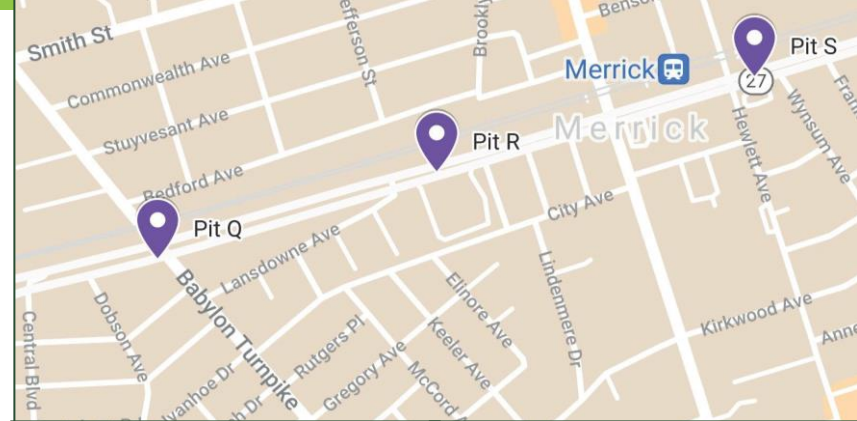
**Pit Q:** Eastbound lane on Sunrise Highway, just west of Babylon Turnpike, in Merrick.

**Pit R:** South side of Sunrise Highway, east of the Babylon Turnpike between Lansdowne Avenue and City Place.

**Pit S:** South side of Sunrise Highway, east of the Meadowbrook Parkway between Hewlett Avenue and Wynsum Avenue.

- Site preparations are ongoing in advance of sliplining which is expected to be underway in the coming months
- Work will take place overnight, from 9pm – 6am. Two eastbound lanes will be closed, and one eastbound lane will remain open. Three lanes of traffic will be maintained in both directions during peak periods between 6a.m. – 9a.m. and 3p.m. – 9p.m.
- **PIT Q:** Commuters will notice concrete barriers, barrels, and signage in the eastbound middle lane of Sunrise Highway for the remainder of construction at Pit Q from approx. the Meadowbrook Parkway to Babylon Turnpike.

**Merrick Fire Dept. 6<sup>th</sup> Battalion**



*Pit Q Pipe Removal February 2022*

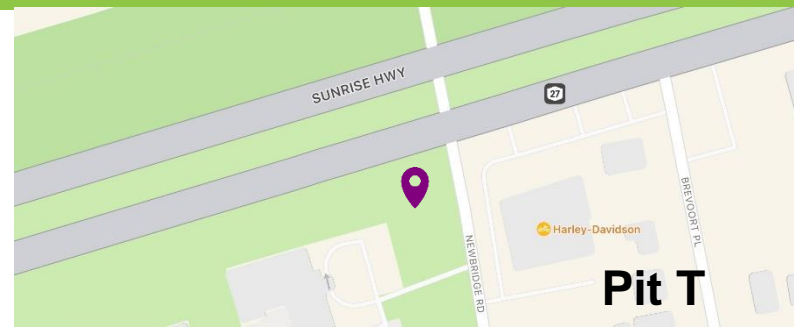


# Sunrise Highway Pit T

**Location:** South side of Sunrise Highway,  
just west of Newbridge Road.

- Crews are saw cutting the road in advance of installation of Support of Excavation (SOE),
- Work will take place overnight, from 9pm – 6am.
- During these hours, two eastbound lanes will be closed, and one eastbound lane will remain open. Three lanes of traffic will be maintained in both directions during peak periods between 6a.m. – 9a.m. and 3p.m. – 9p.m.

**Merrick Fire Dept. – 6<sup>th</sup> Battalion**



# Sunrise Highway Pits U and V

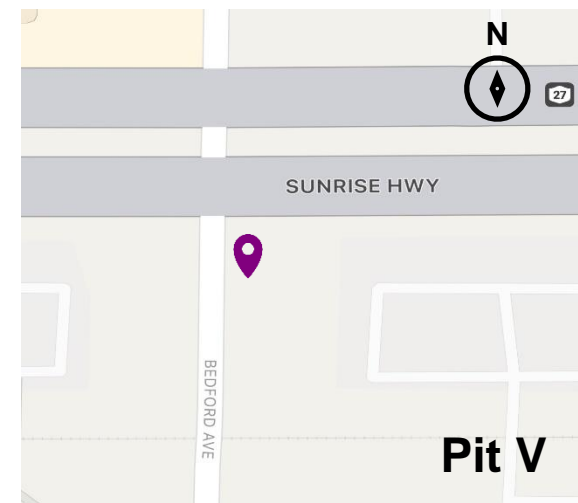
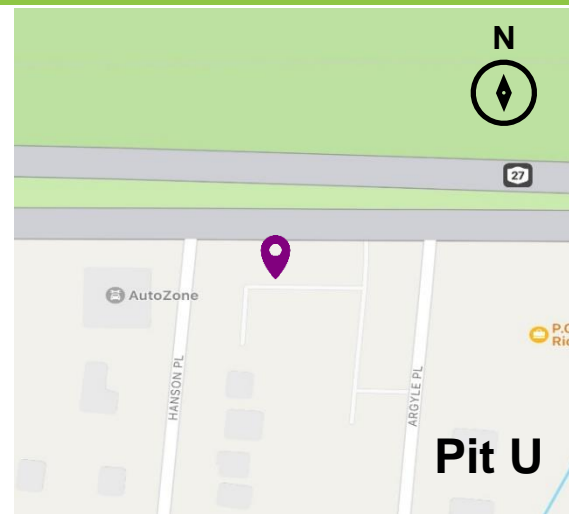
## Locations:

Pit U: South side of Sunrise Highway, east of Newbridge Road, between Hanson Place and Argyle Place.

Pit V: South side of Sunrise Highway, just east of Bedford Avenue.

- In advance of installation of Support of Excavation (SOE), crews have completed installation of concrete planks.
- In mid-April, crews will begin to install sheeting and additional SOE in advance of excavation.
- Work will take place overnight, from 9pm – 6am.
- During these hours, two eastbound lanes will be closed, and one eastbound lane will remain open. Three lanes of traffic will be maintained in both directions during peak periods between 6a.m. – 9a.m. and 3p.m. – 9p.m.

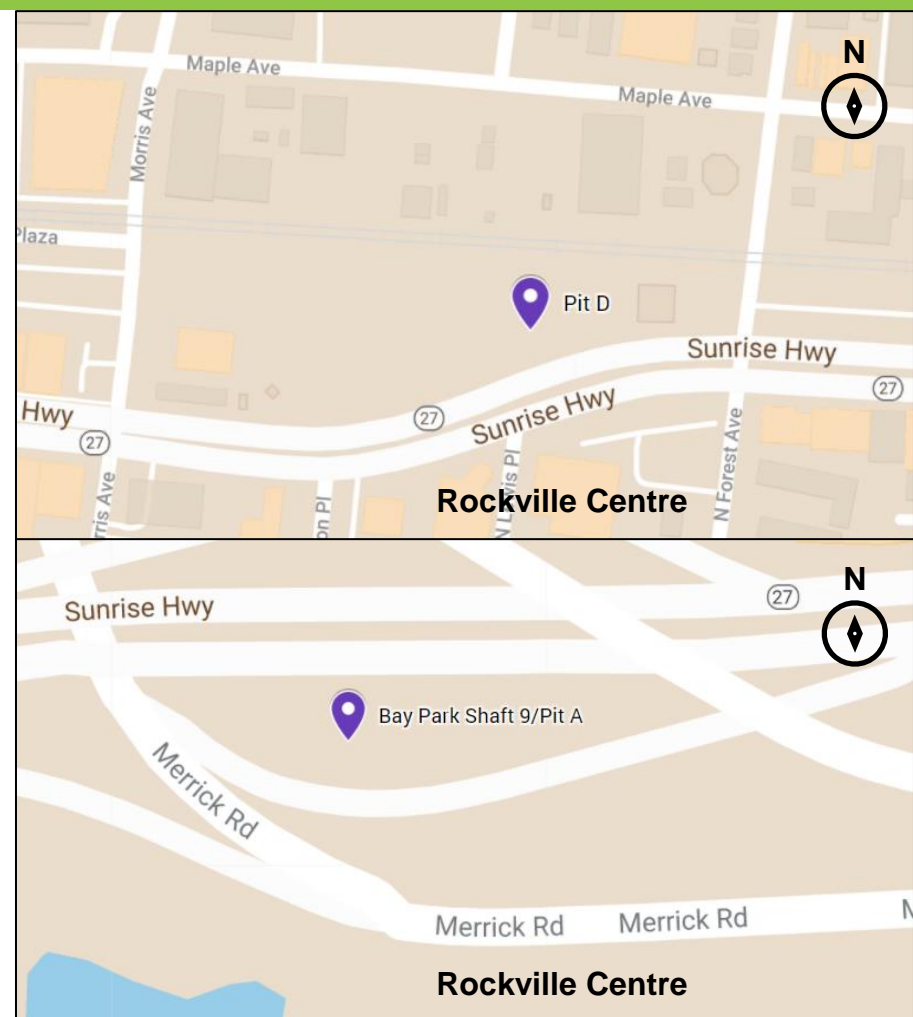
**Merrick Fire Dept. – 6<sup>th</sup> Battalion**



# Sunrise Highway Pit A/Pit D

- **Pit D:** A construction entrance has been established at Joyce Field in Rockville Centre Sunrise Highway for storage and laydown of materials.
- The sidewalk in front of Joyce Field, between Morris Avenue and North Forest Avenue, will continue to be closed for the duration of the Project until 2024.
- **BP9 / Pit A:** A construction entrance has been established at the Sunrise Highway/Merrick Road Interchange.
- One eastbound lane on the Merrick Road exit ramp onto Sunrise Highway is closed throughout construction at this location, which is expected to last through 2022.
- Maintenance and Protection of Traffic (MPT) and Work Zone Traffic Control (WZTC) signage have been placed in both areas to assist pedestrians.

**Rockville Centre Fire Dept. 2<sup>nd</sup> Battalion**





# Protection of Traveling Public and Work Zones

- Work Zone Traffic Control (WZTC) and Maintenance and Protection of Traffic (MPT) Signage is deployed to assist motorists and pedestrians around WBC work areas.
- Variable Message Signage (VMS) boards are deployed in advance of lane closures.
- Weekly “Before You Go” Facebook posts highlight lane closures for the week ahead.
- Canvassing notifications to nearby residents and businesses as needed.



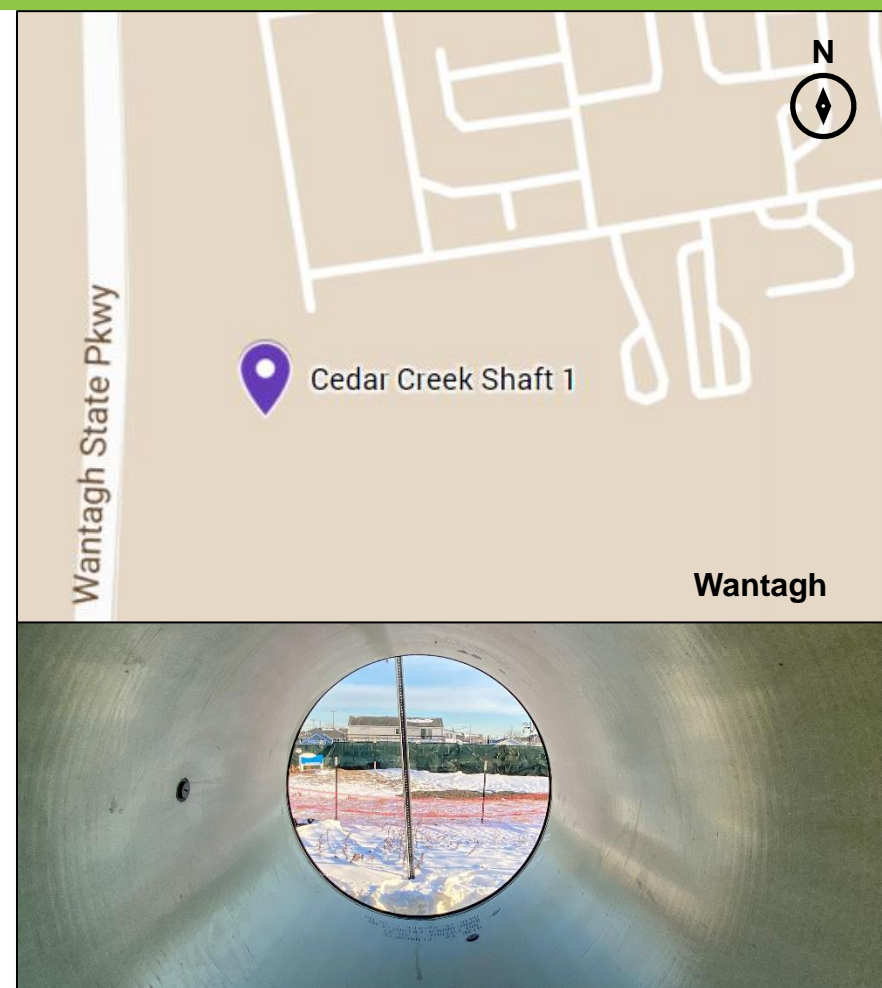
*MPT deployed at Pit F on Sunrise Highway, May 2021*

# Cedar Creek Shaft 1 (CC1)

**Location:** Within the footprint of the Cedar Creek Water Pollution Control Plant (WPCP).

- Shaft excavation is in progress.
- Crews are constructing a reinforced concrete liner, a structure that supports pipe jacking.
- Work at this location will have no noticeable impact to Cedar Creek Park users.

**Wantagh Fire Dept. – 6<sup>th</sup> Battalion**



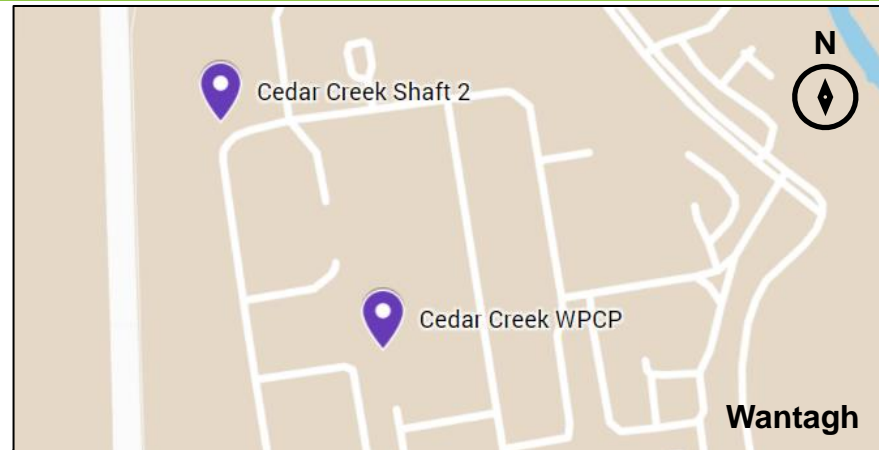
*A Look Inside Microtunneling Pipe, January 2022*

## Cedar Creek Shaft 2 (CC2)

**Location:** Within the footprint of the Cedar Creek WPCP.

- Working slab was poured and crews are constructing a reinforced concrete liner, a structure that supports pipe jacking.
- Shaft excavation is complete.
- 2<sup>nd</sup> MTBM (P.O.S.E.I.D.O.N.) has been delivered and is being assembled in preparation for microtunneling.

**Wantagh Fire Dept. – 6<sup>th</sup> Battalion**



*MTBM P.O.S.E.I.D.O.N. Pipe Components at CC2, January 2022*

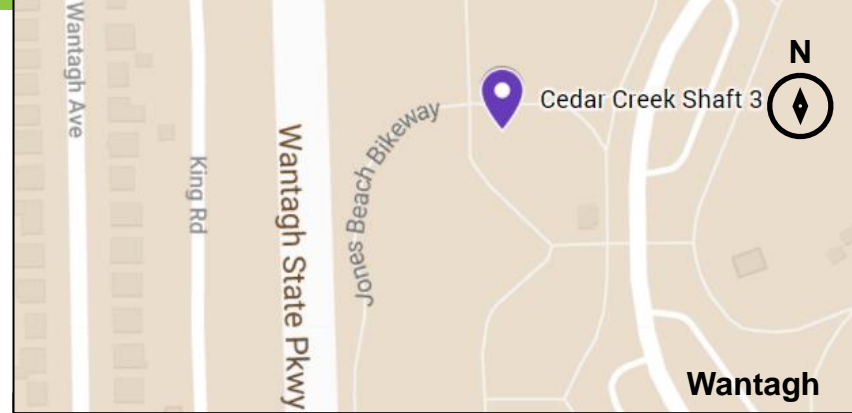


## Cedar Creek Shaft 3 (CC3)

**Location:** Cedar Creek Park, near the entrance to the Wantagh State Parkway and Jones Beach Bike Path.

- Mass excavation is in progress, 7-8 feet remaining.
- The Jones Beach Bike Path is expected to remain open throughout construction.
- Please be mindful of construction vehicles as they enter and exit the park and follow signage and/or direction from flagging personnel in the area.

**Wantagh Fire Dept. – 6<sup>th</sup> Battalion**



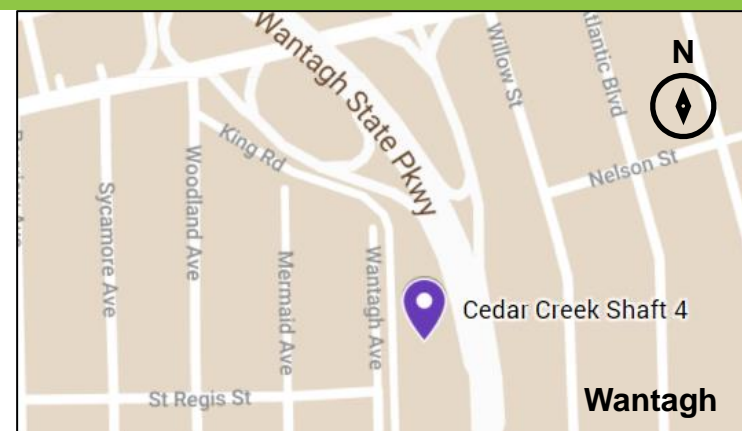
*Guide Wall Installation at CC3, January 2022*

# Cedar Creek Shaft 4 (CC4)

**Location:** Off King Road adjacent to Wantagh Avenue/St. Regis Street.

- Crews have begun preparing the site for construction. This involves equipment mobilization, creating construction entrances, driveways, fencing, removing trees, and clearing any debris leading to the work zones.
- Installation of SOE has begun this month.

**Wantagh Fire Dept. – 6<sup>th</sup> Battalion**



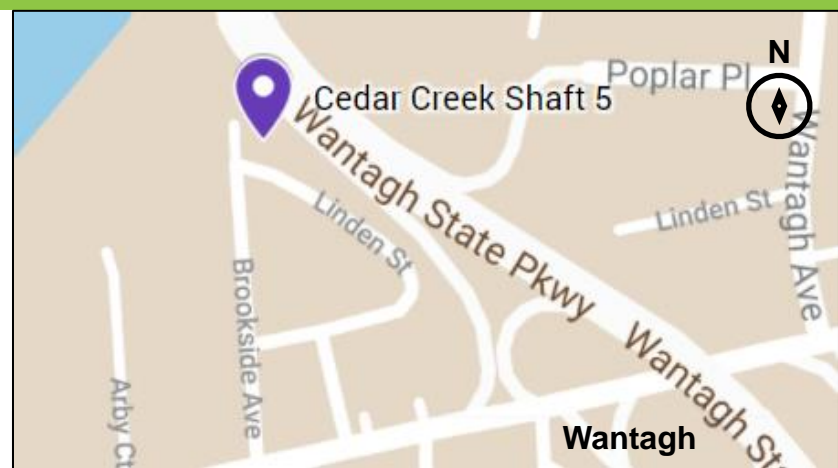
*Clearing and Grubbing at CC4, January 2022*

# Cedar Creek Shaft 5 (CC5)

**Location:** Intersection of Brookside Avenue and Linden Street, just west of the Wantagh State Parkway.

- SOE installation continues followed by jet grout operations.
- Completion of CRM.

**Wantagh Fire Dept. – 6<sup>th</sup> Battalion**



*Clearing and Grubbing at CC5, January 2022*

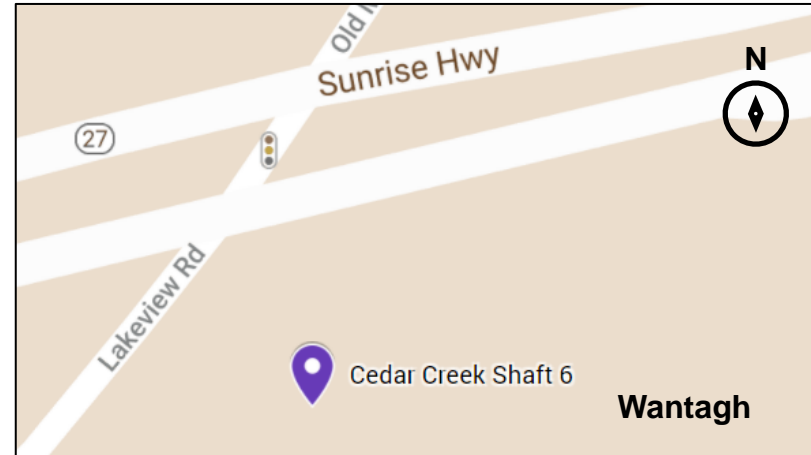


## Cedar Creek Shaft 6 (CC6)

**Location:** Just off Lakeview Road south of Sunrise Highway.

- Sheeting installation is completed.
- Site is being prepared for jet grout operations. (1-2 week effort)

**Wantagh Fire Dept. – 6<sup>th</sup> Battalion**



# Hazards and Conditions



- All work pits and shafts will be enclosed and protected with fencing, inaccessible to the public.
- WBC is following all OSHA guidelines.
- Quality control team is present during each operation.

## Community Information Center (CIC)

- The CIC, located at 265 Sunrise Highway, Rockville Centre is OPEN
- WBC will offer in-person and virtual meetings from the CIC
- A Project Representative is present:
  - M, W and F: 8am - 3pm
  - Tu and Th: 12pm - 7pm
  - Every other Sat: 9am - 12pm
  - Available to meet by appointment
  - Please visit the Project website for the most updated hours.





# Contact Us



**24/7 Project Hotline**  
(516) 252-6121



**Community Information Center**  
265 Sunrise Highway  
Rockville Centre, New York 11570  
*\*See website for hours*



**Email**  
BayParkConveyance@gmail.com



**Facebook**  
@BayParkConveyance



**Website**  
[www.BayParkConveyance.org](http://www.BayParkConveyance.org)



**Question and Answer Session**





**Thank You!**