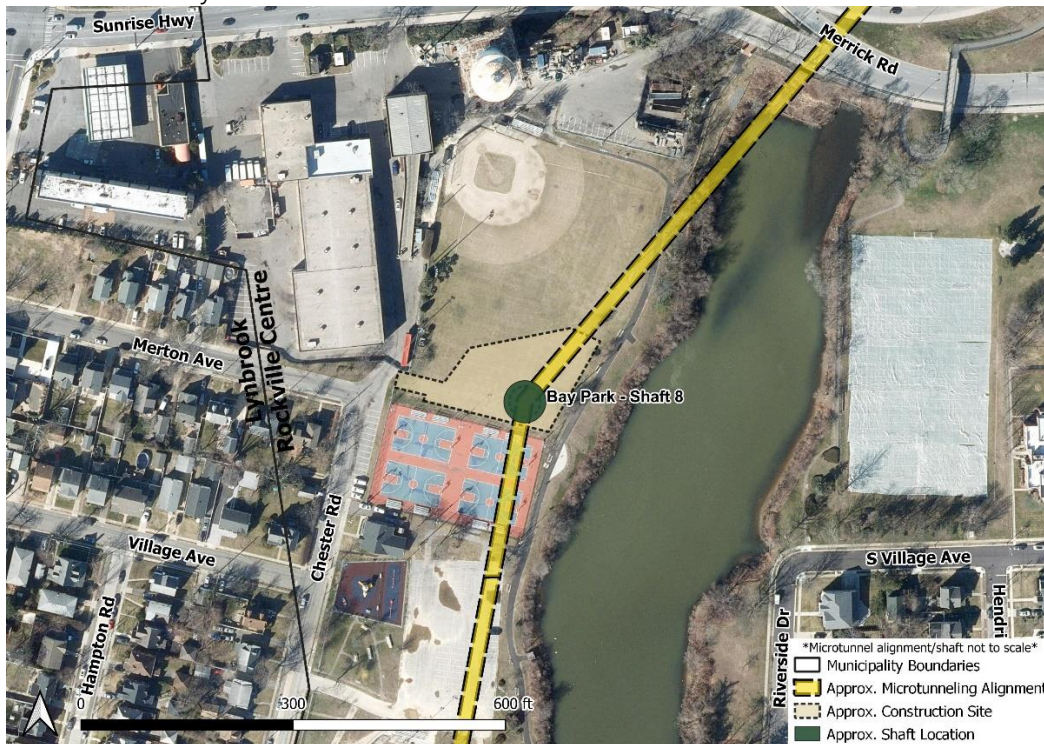


Dear Neighbor:

We are writing to update you on the construction of the Bay Park Conveyance Project. The Bay Park Conveyance Project is a partnership between the New York State Department of Environmental Conservation and the Nassau County Department of Public Works. Western Bays Constructors (WBC) is the design-builder for this innovative Project.

The Project will convey treated water from the South Shore Water Reclamation Facility at Bay Park (formerly known as the Bay Park Sewage Treatment Plant) to the existing Cedar Creek Water Pollution Control Plant's ocean outfall pipe, which discharges and diffuses treated water three miles offshore in the Atlantic Ocean. Construction involves underground microtunneling within your community. Microtunneling is a safe, effective way to install piping deep into the ground, avoiding long trenches and surface disturbance.

Bay Park Shaft 8 (BP8) is located at Rockville Centre's Lister Field, at the Mill River Complex Park. As construction in your area continues, we want to give you as much information as possible. Here's what you should know:



Bay Park Shaft 8

In the coming weeks, construction at BP8 will involve excavation approximately 50 feet below the surface, removing soil and materials from the newly constructed shaft. Excavators and

cranes will be used to perform this activity, and dump trucks will transport the excavated material off site. Following excavation, additional activities will take place at the shaft site to prepare for microtunneling including equipment mobilization to the site. The WBC Community Outreach Team will continue to update you as the Project progresses.

Through a dedicated Community Outreach Program, WBC is committed to a robust engagement process and to maintaining an open line of communication throughout construction. We are also committed to minimizing disruption to neighborhoods near construction. WBC's Community Outreach Team will be available to answer questions and act as a project liaison throughout the duration of construction.

For more information on this project element, we encourage you to visit our website www.BayParkConveyance.org and Facebook page [@BayParkConveyance](https://www.facebook.com/BayParkConveyance), and [register for email updates](#). Our Community Information Center is located at 265 Sunrise Highway in Rockville Centre; please visit our website for hours. You may contact us via the Project's 24/7 hotline at (516) 252-6121 or email us at BayParkConveyance@gmail.com with any questions.

Respectfully,

The WBC Community Outreach Team