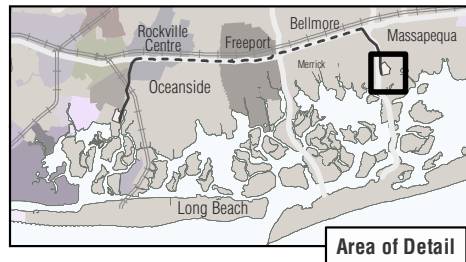


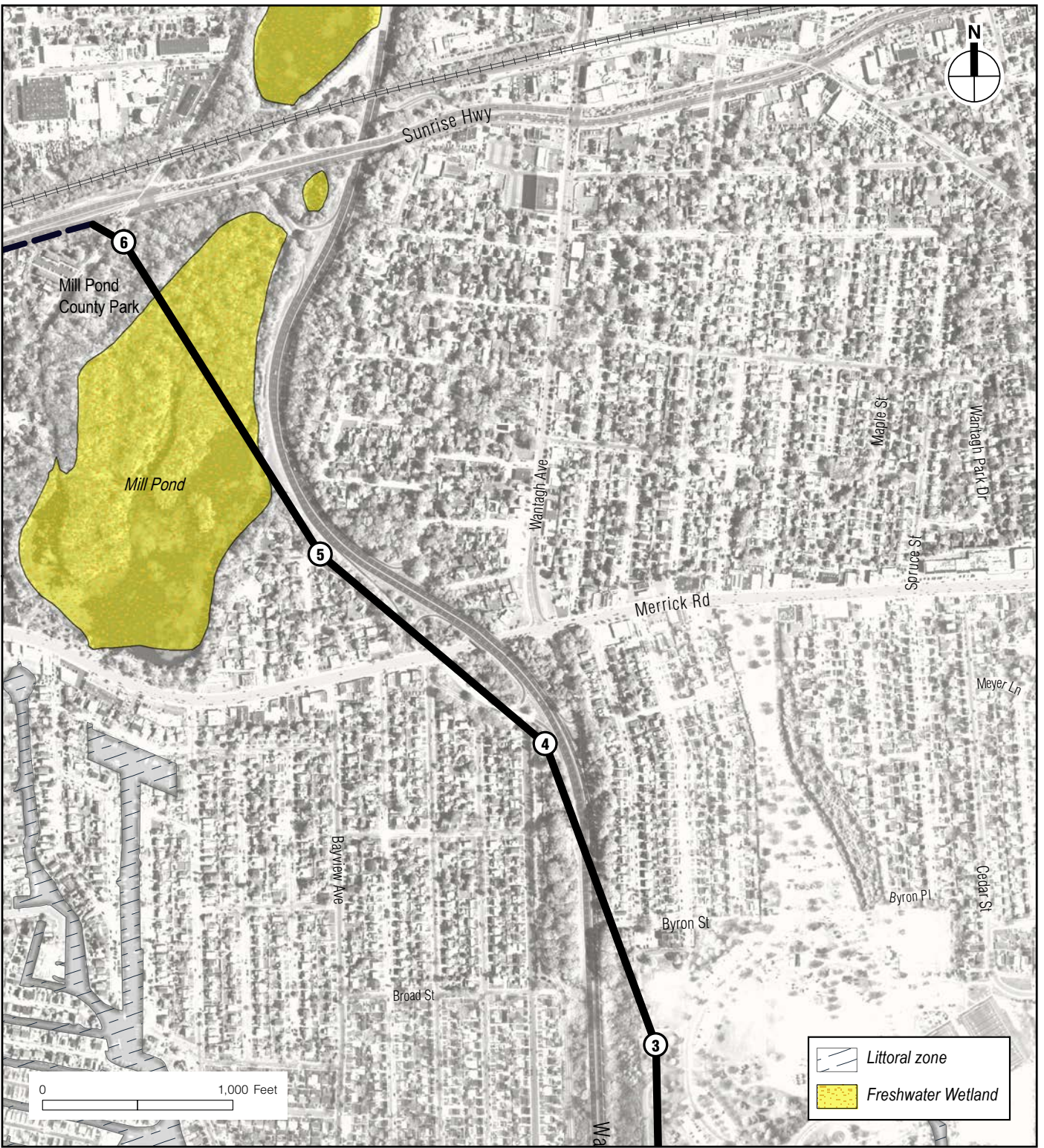
**Proposed Project Elements**

- Cedar Creek Shaft
- Cedar Creek Microtunnel



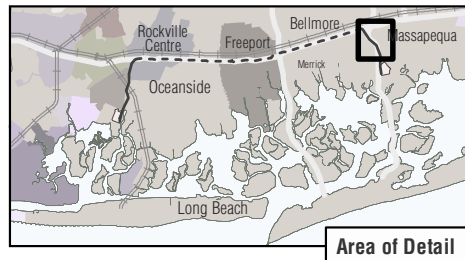
	<b>FEMA</b>	
	<b>Homeland Security and Emergency Services</b>	





**Proposed Project Elements**

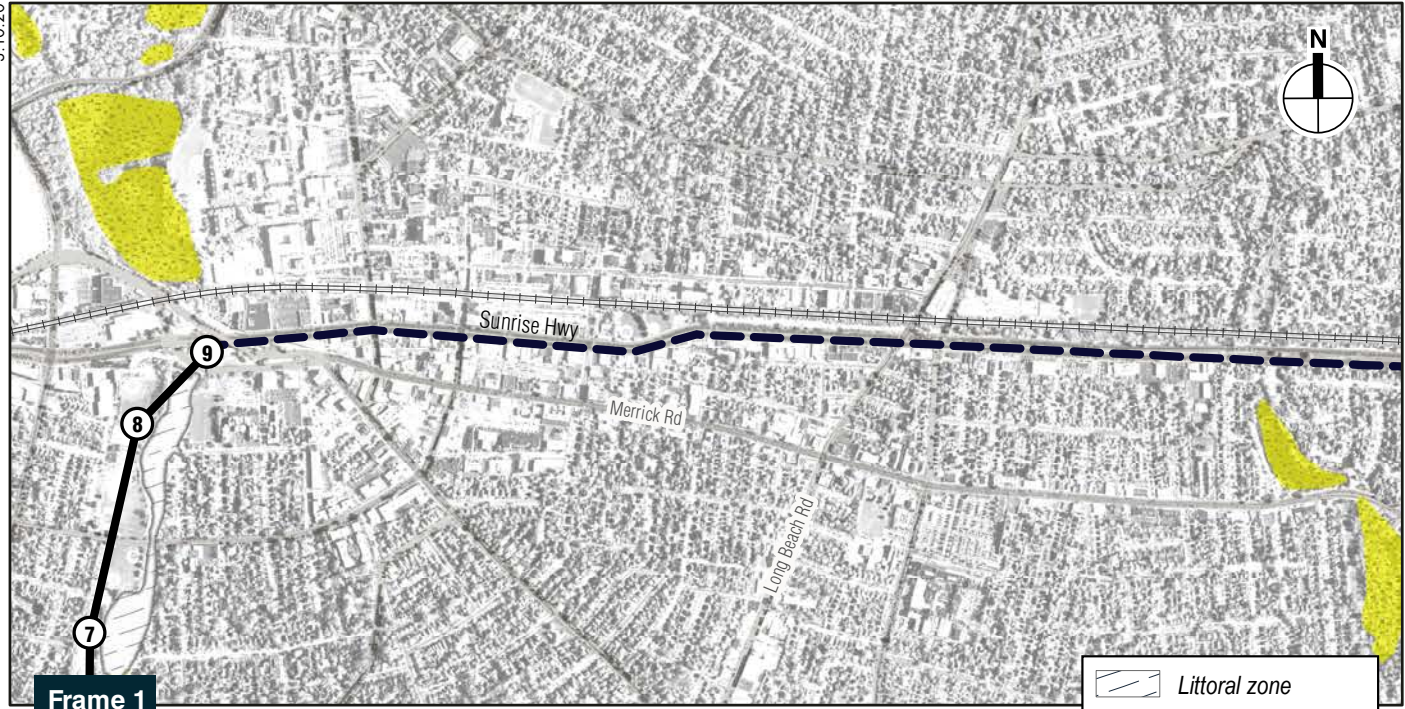
-  Cedar Creek Shaft
-  Cedar Creek Microtunnel
-  Sunrise Highway Aqueduct Rehabilitation



	<b>FEMA</b>	
	<b>Homeland Security and Emergency Services</b>	



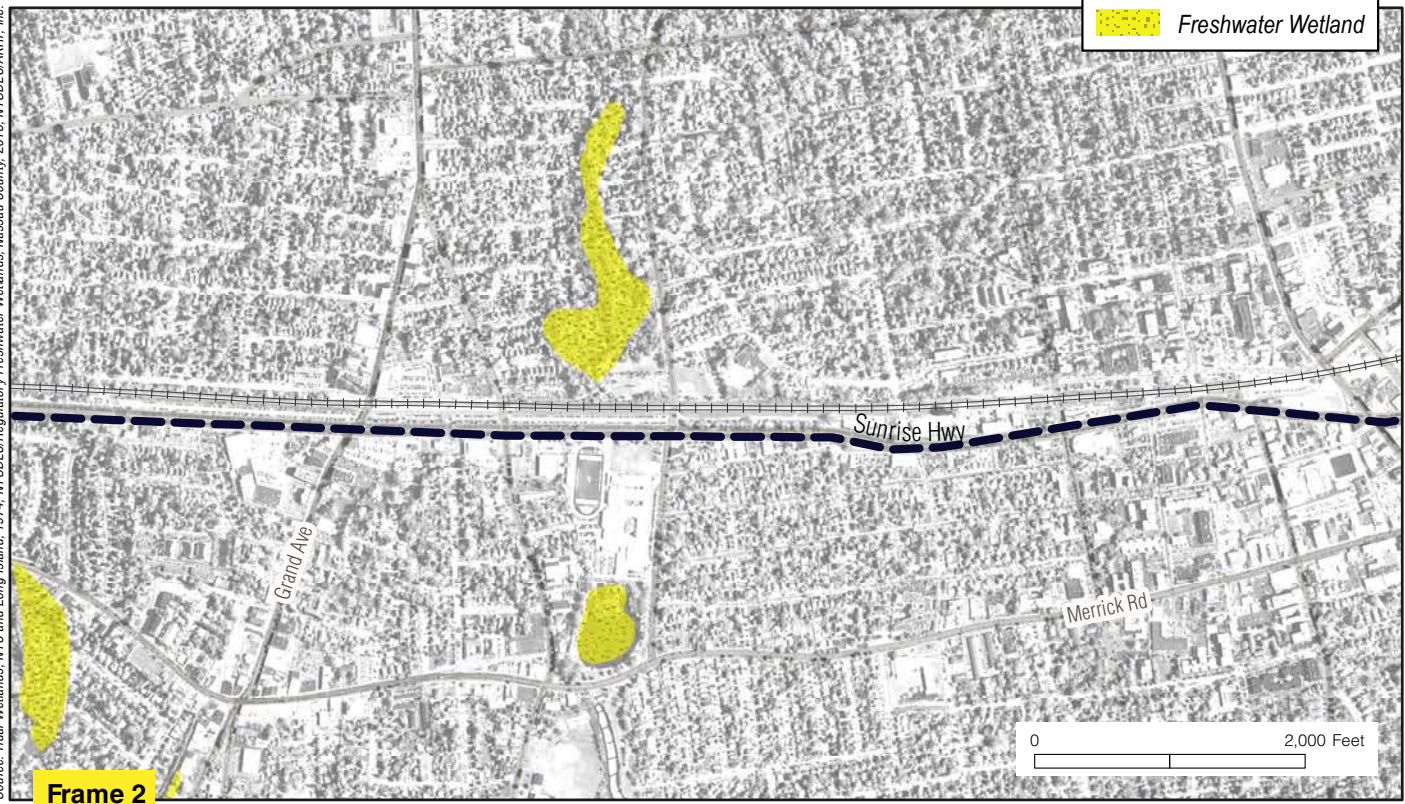
3.10.20



**Frame 1**

	Littoral zone
	Fresh Marsh
	Freshwater Wetland

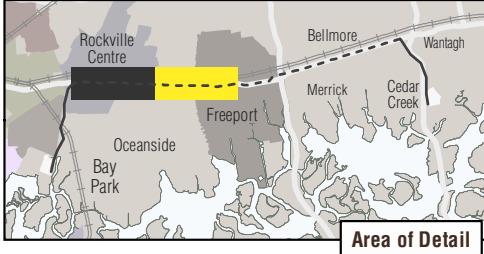
Source: Total Wetlands, NYC and Long Island, 1974, NYSDCE/Regulatory, Freshwater Wetlands, Nassau County, 2013, NYSDCE/ARRE, Inc.



**Frame 2**

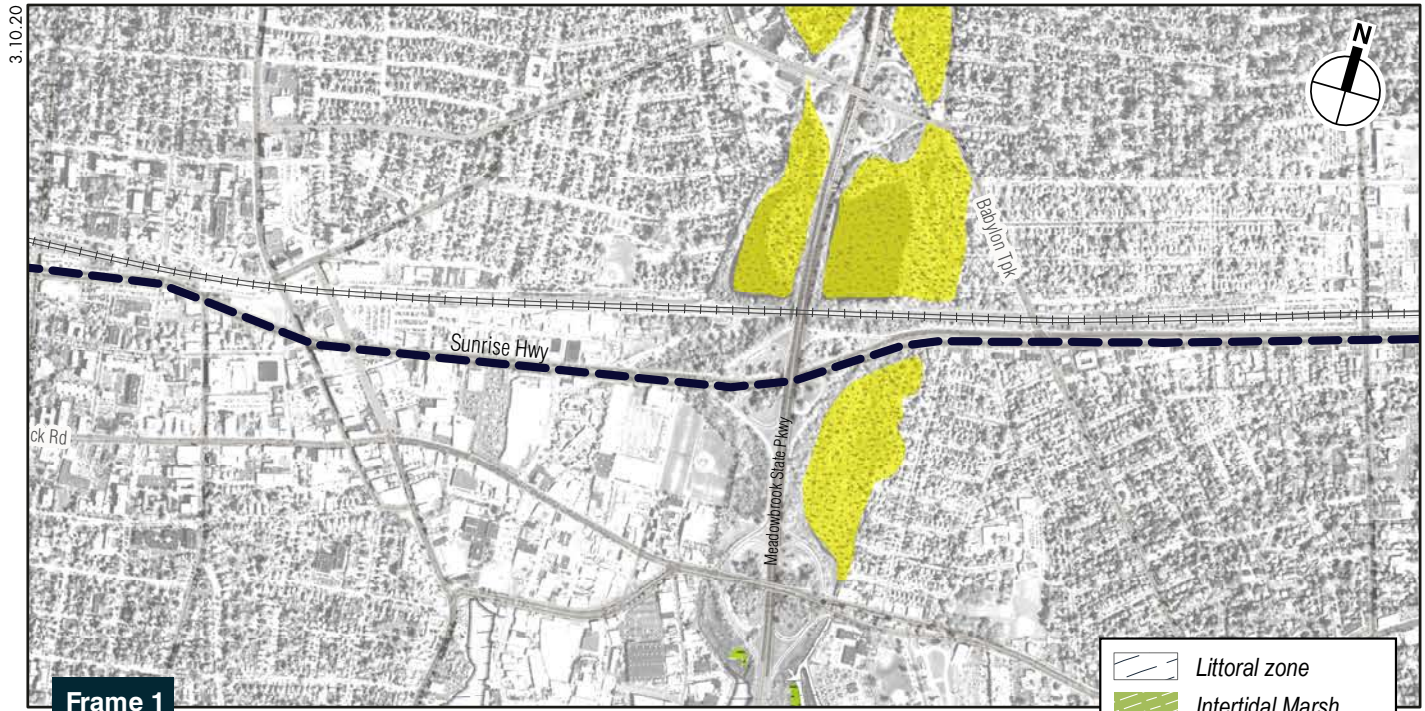
**Proposed Project Elements**

- Bay Park Shaft
- Bay Park Microtunnel
- Sunrise Highway Aqueduct Rehabilitation



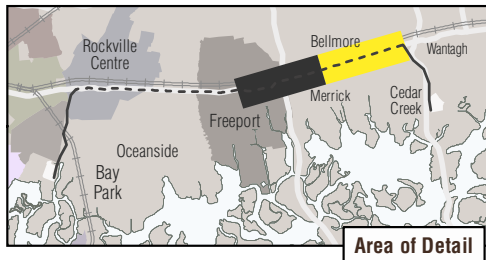
	<b>FEMA</b>	
	<b>Homeland Security and Emergency Services</b>	





**Proposed Project Elements**

- Cedar Creek Shaft
- Cedar Creek Microtunnel
- Sunrise Highway Aqueduct Rehabilitation



	<b>Homeland Security and Emergency Services</b>