

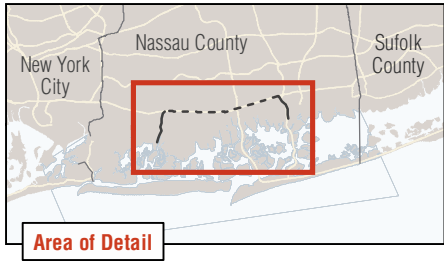
Proposed Project Elements

- Bay Park/Cedar Creek Shafts
- Bay Park/Cedar Creek Microtunnels
- Sunrise Highway Acqueduct Rehabilitation

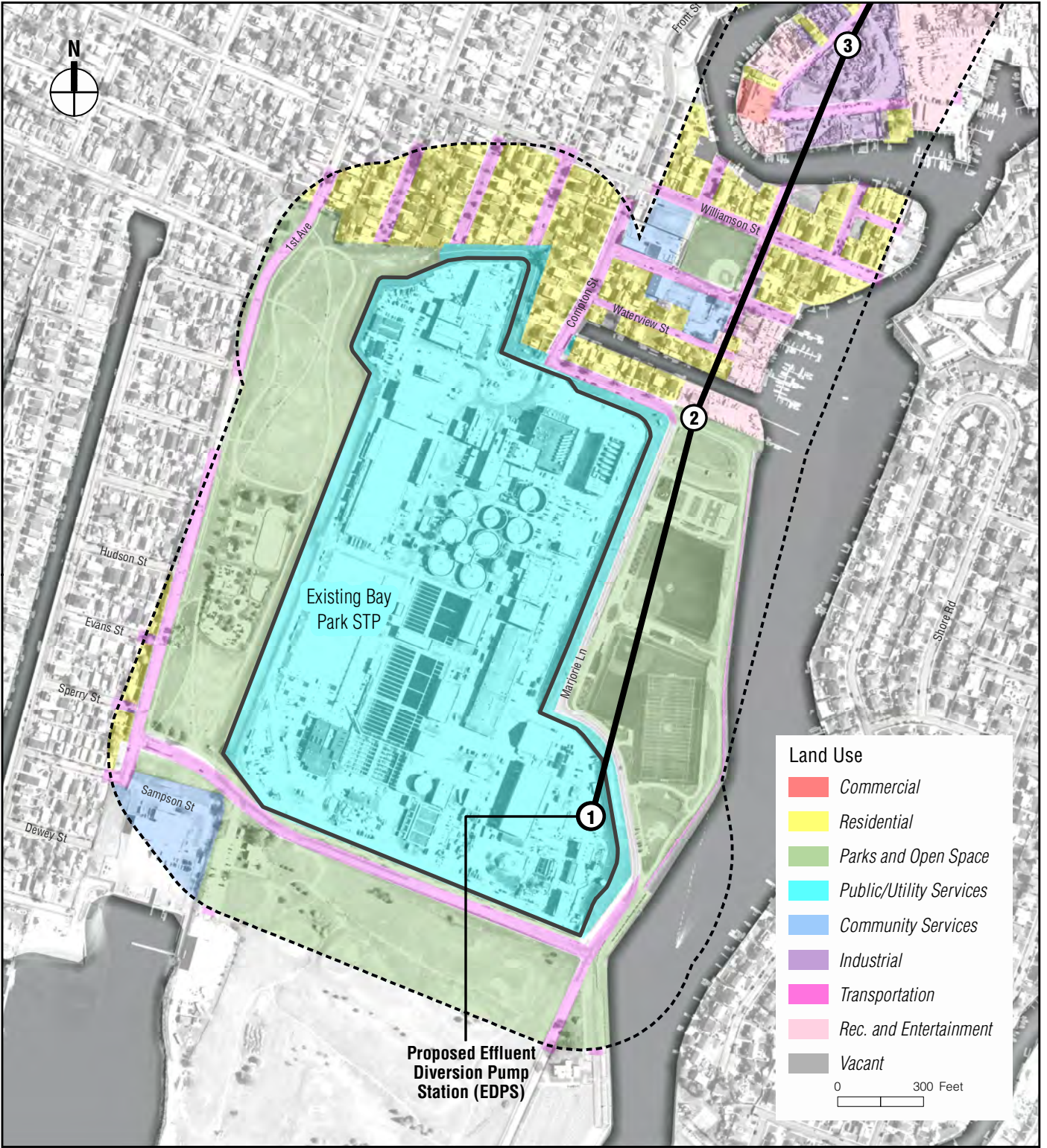
Land Use

- | | |
|-------------------------|------------------------|
| Commercial | Community Services |
| Residential | Industrial |
| Parks and Open Space | Transportation |
| Public/Utility Services | Rec. and Entertainment |
| | Vacant |

0 1 Miles

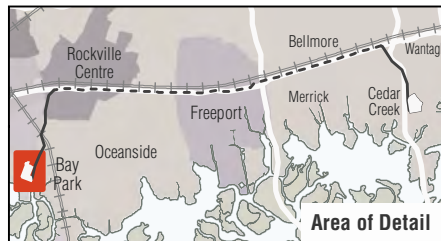


FEMA	
NEW YORK STATE	
Homeland Security and Emergency Services	



Proposed Project Elements

- Bay Park Shafts
- Bay Park Microtunnel
- - - 400-Foot Study Area





FEMA

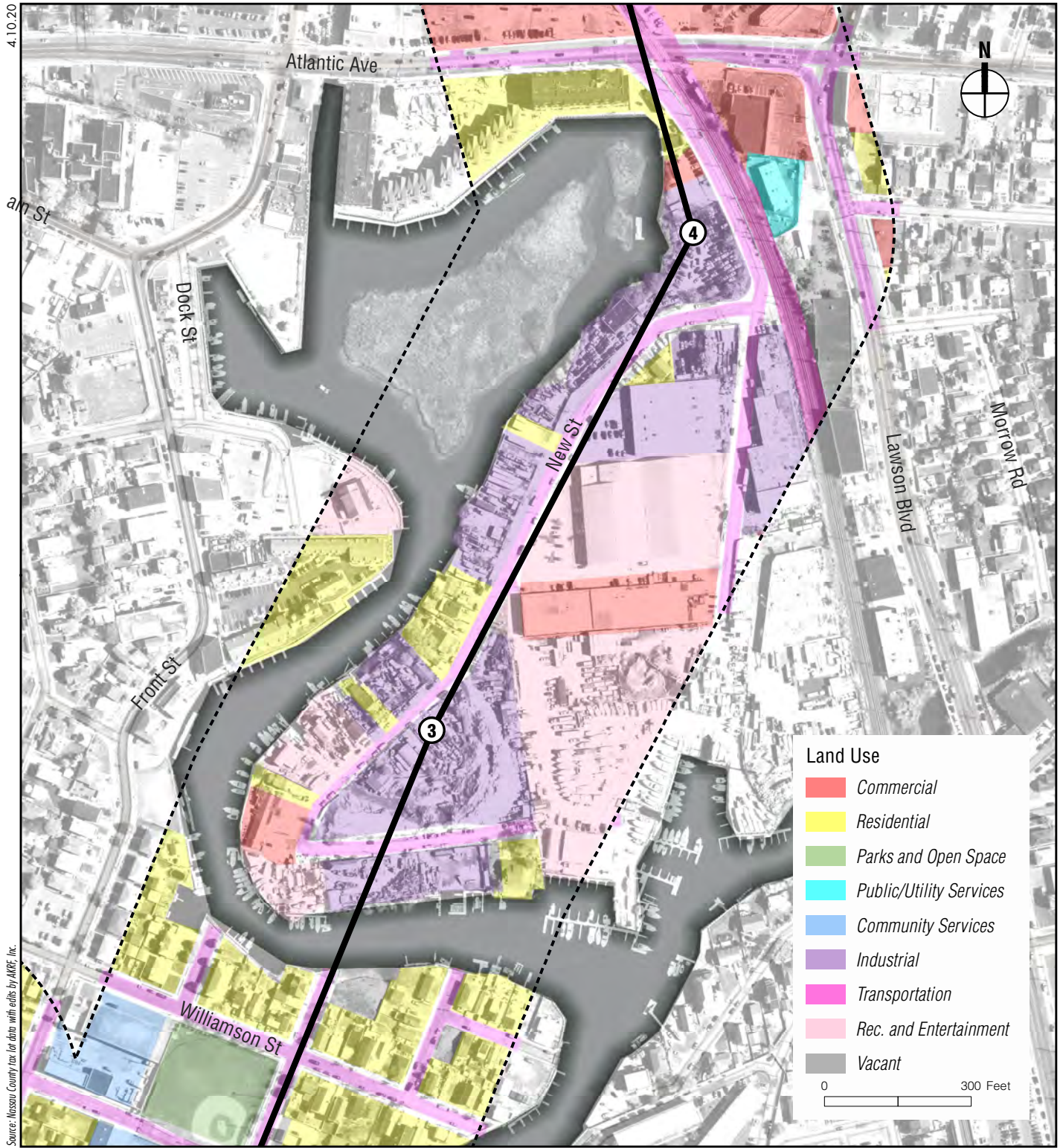


**NASSAU COUNTY
STATE OF NEW YORK**






NEW YORK STATE

**Homeland Security
and Emergency Services**



Source: Nassau County tax lot data with edits by AKRF, Inc.

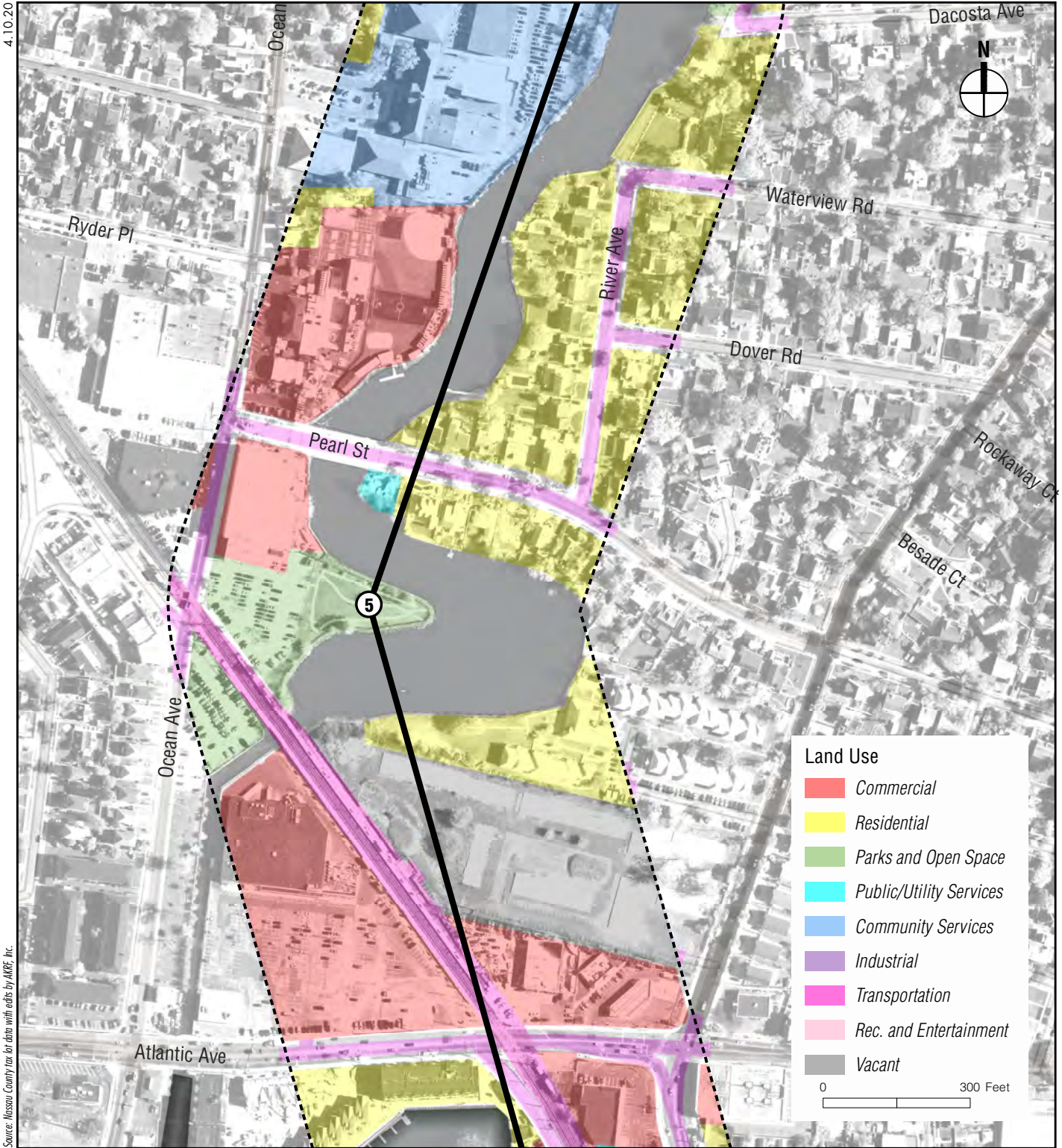
Proposed Project Elements

-  Bay Park Shafts
-  Bay Park Microtunnel
-  400-Foot Study Area



	
FEMA	
	Homeland Security and Emergency Services

4.10.20



Source: Nassau County tax lot data with edits by AKRF, Inc.

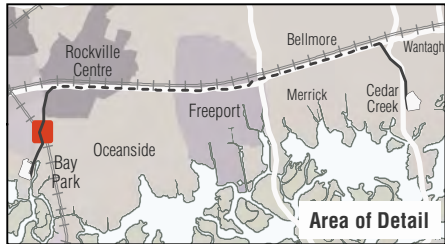
Land Use

- Commercial
- Residential
- Parks and Open Space
- Public/Utility Services
- Community Services
- Industrial
- Transportation
- Rec. and Entertainment
- Vacant

0 300 Feet

Proposed Project Elements

- 5 Bay Park Shafts
- Bay Park Microtunnel
- 400-Foot Study Area





FEMA



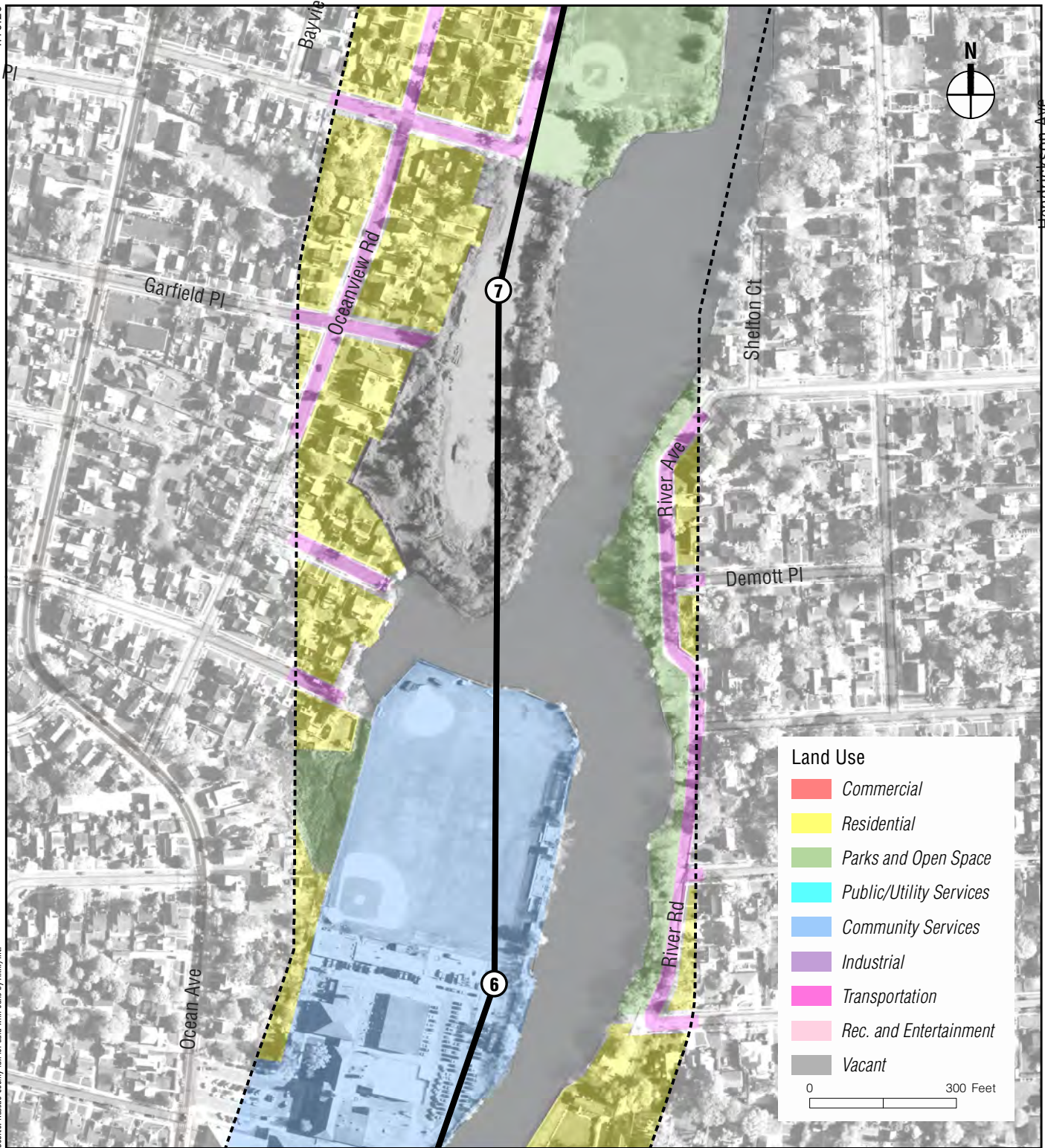


NEW YORK STATE




Homeland Security and Emergency Services

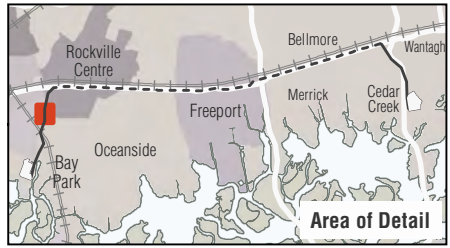
4.10.20

Source: Nassau County tax lot data with edits by AMRF, Inc.



Proposed Project Elements

-  Bay Park Shafts
-  Bay Park Microtunnel
-  400-Foot Study Area





FEMA



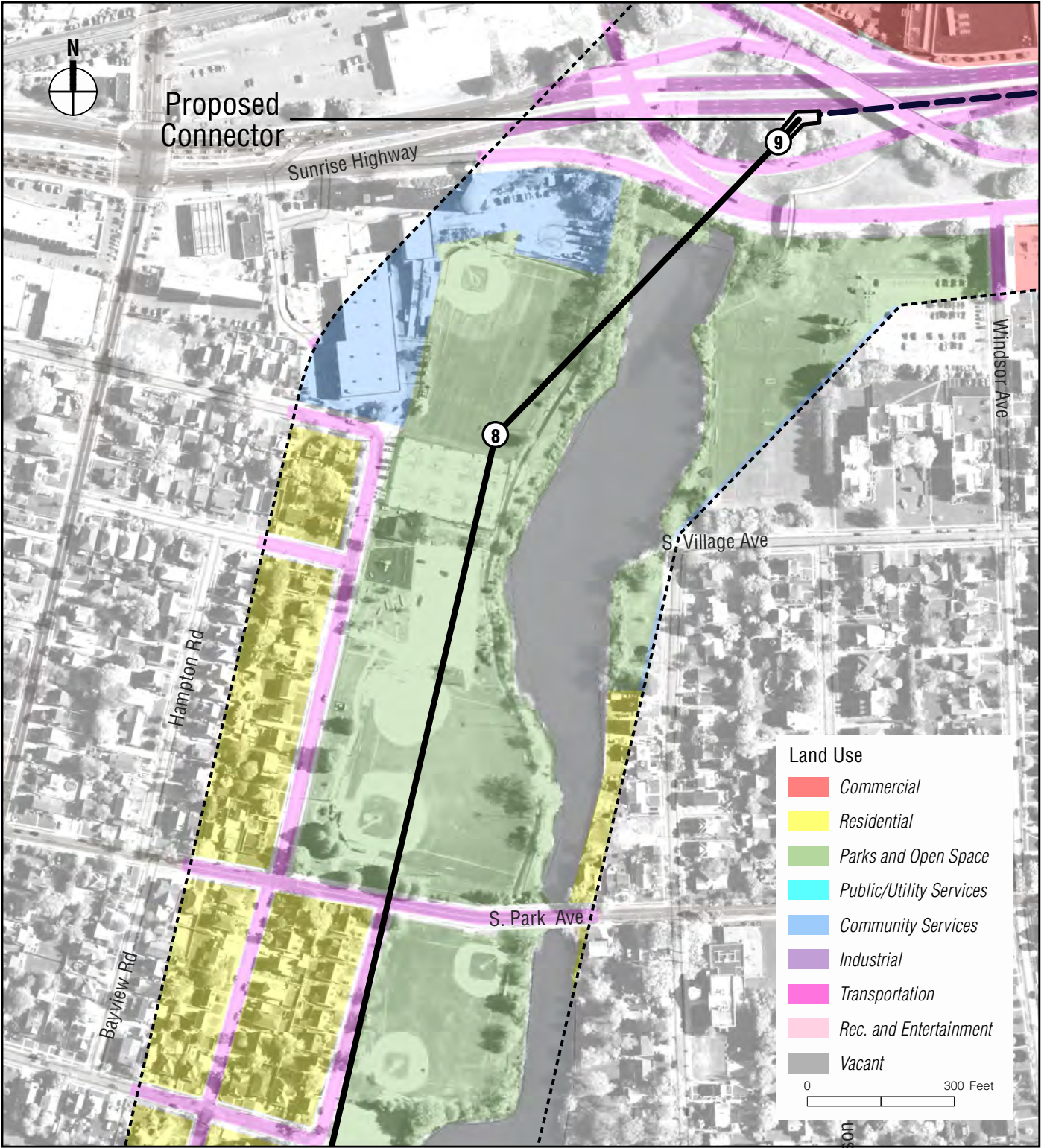


NEW YORK STATE





Homeland Security and Emergency Services

4.10.20

Source: Nassau County for data with edits by AKRE, Inc.



Proposed Project Elements

-  Bay Park Shafts
-  Bay Park Microtunnel
-  Sunrise Highway Aqueduct Rehabilitation
-  400-Foot Study Area





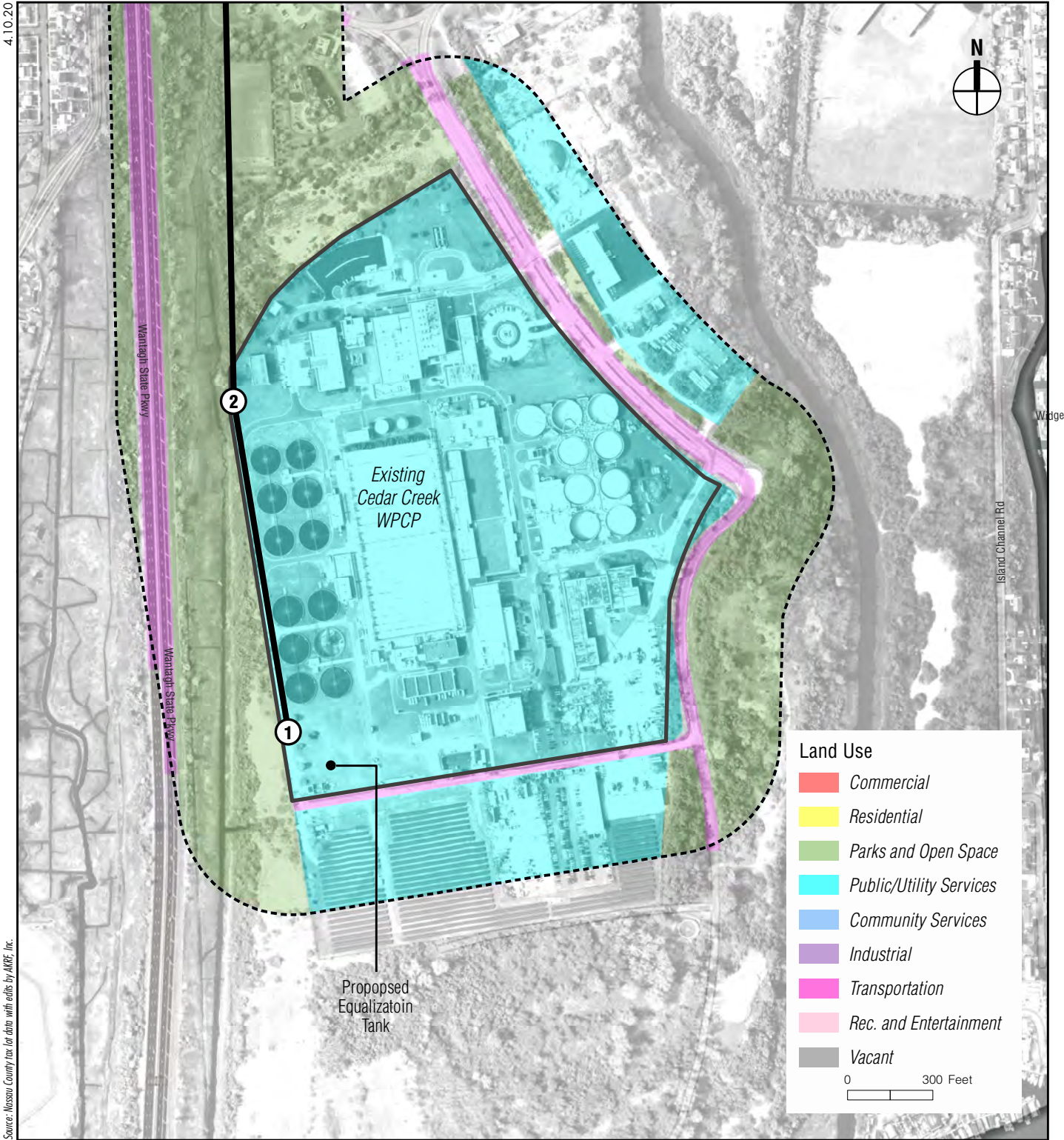
FEMA





NEW YORK STATE

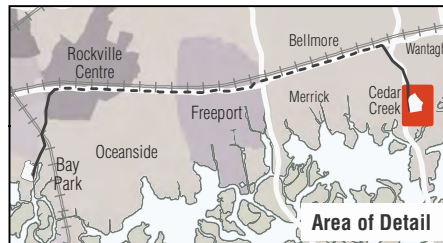
Homeland Security and Emergency Services



Source: Nassau County tax lot data with edits by AKRF, Inc.

Proposed Project Elements

- Cedar Creek Shafts
- Cedar Creek Microtunnel
- 400-Foot Study Area





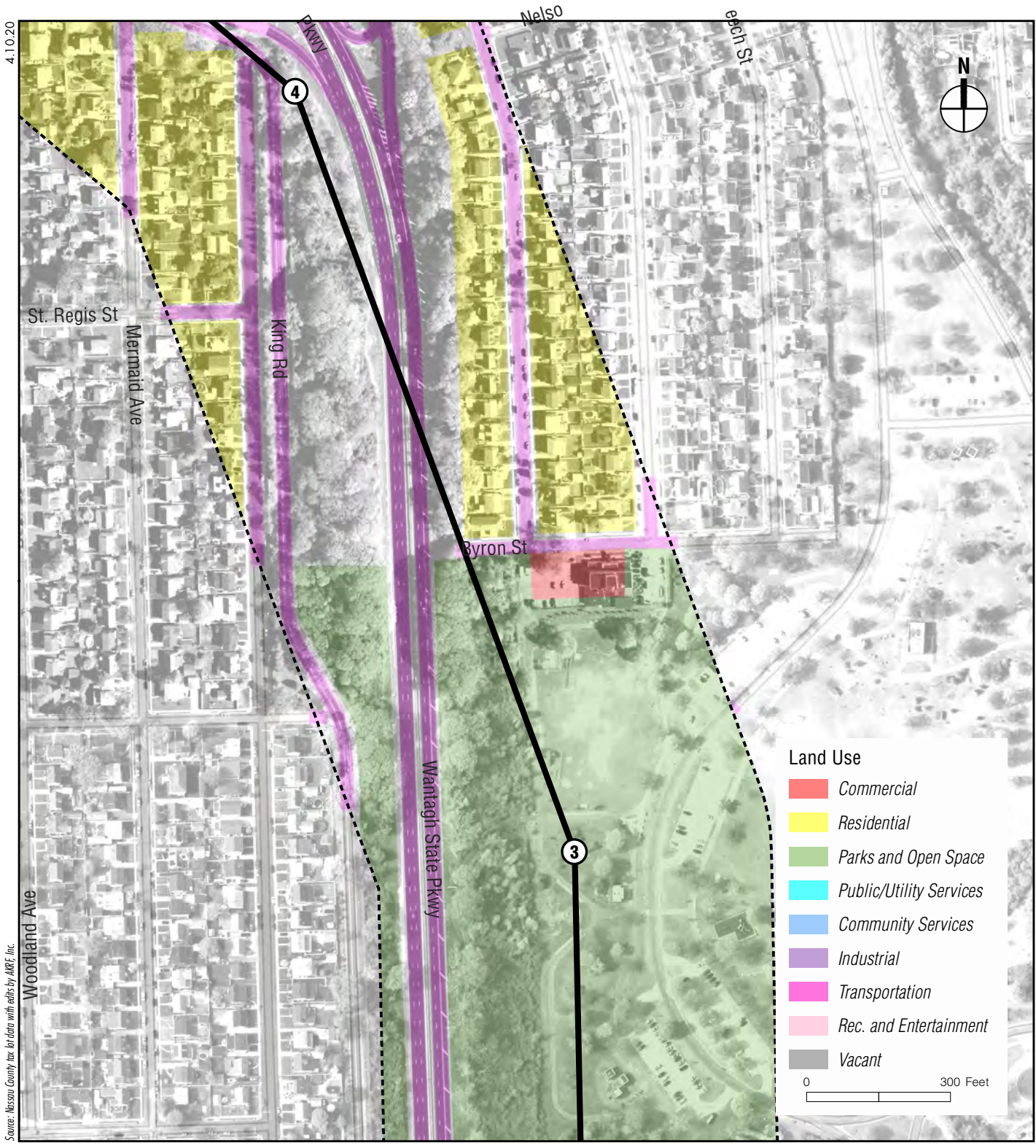
FEMA





NEW YORK STATE

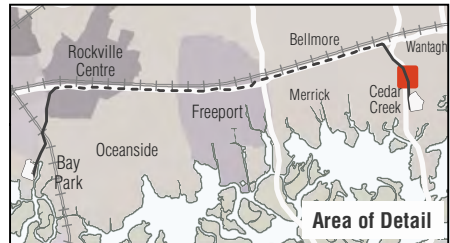
Homeland Security and Emergency Services



Source: Nassau County tax lot data with edits by AKRF, Inc.

Proposed Project Elements

- Cedar Creek Shafts
- Cedar Creek Microtunnel
- 400-Foot Study Area





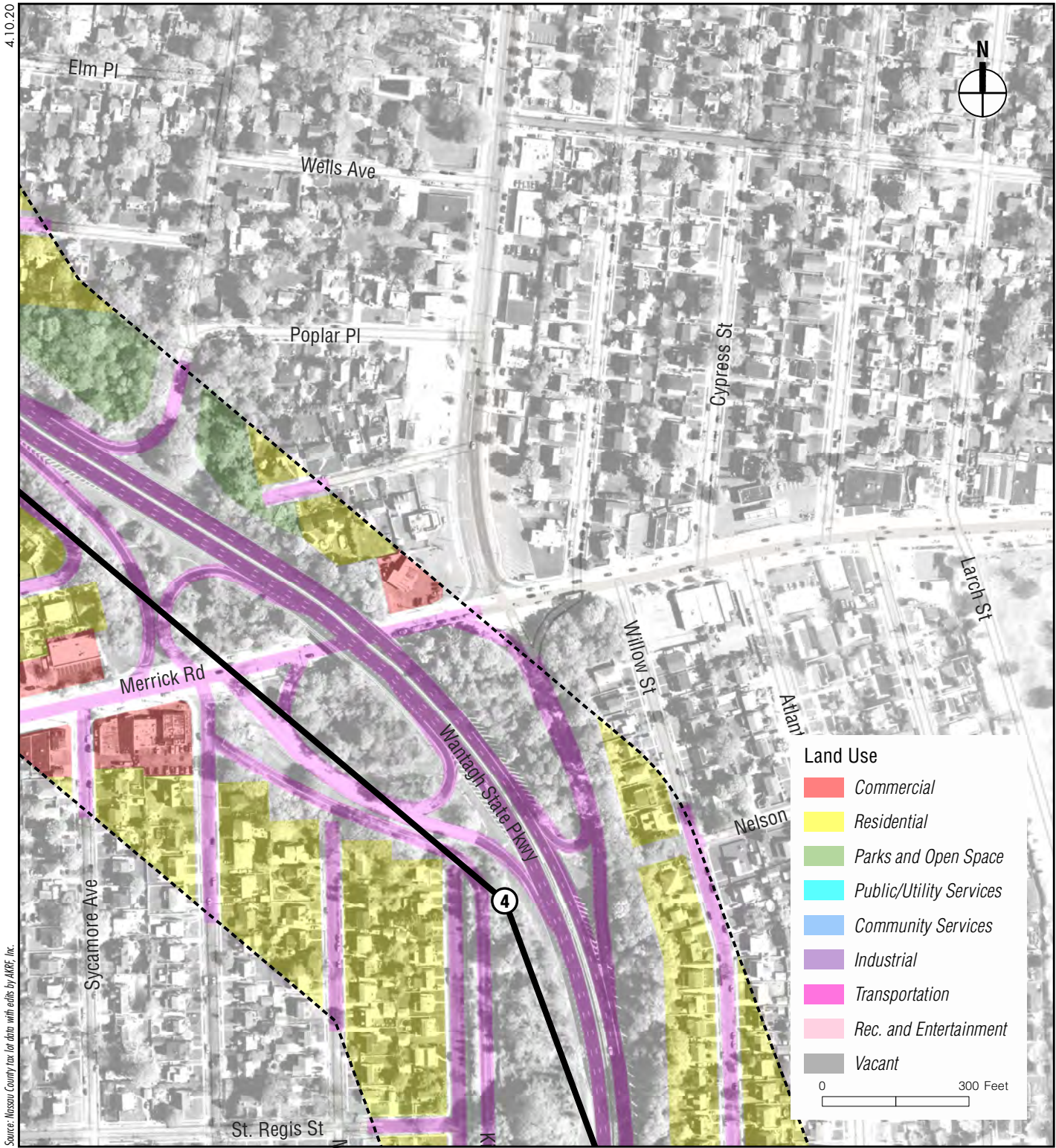
FEMA








NEW YORK STATE

Homeland Security and Emergency Services



Source: Nassau County tax lot data with edits by AKRF, Inc.

Proposed Project Elements

-  Cedar Creek Shafts
-  Cedar Creek Microtunnel
-  400-Foot Study Area





FEMA

U.S. DEPARTMENT OF
HOMELAND SECURITY



NASSAU COUNTY
STATE OF NEW YORK

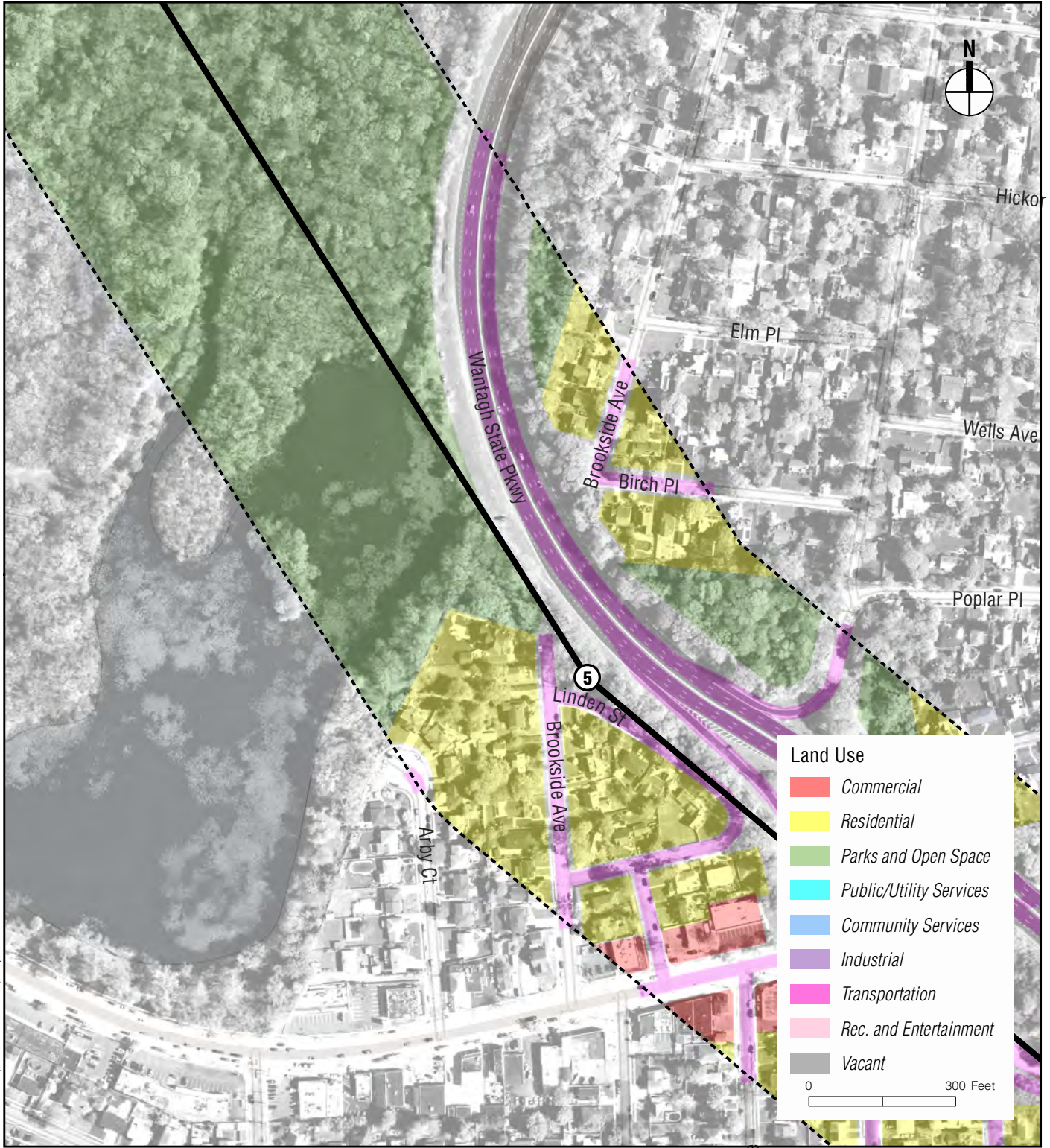


NEW YORK STATE




**Homeland Security
and Emergency Services**

4.10.20

Source: Nassau County tax lot data with edits by AKRF, Inc.



Proposed Project Elements

-  Cedar Creek Shafts
-  Cedar Creek Microtunnel
-  400-Foot Study Area





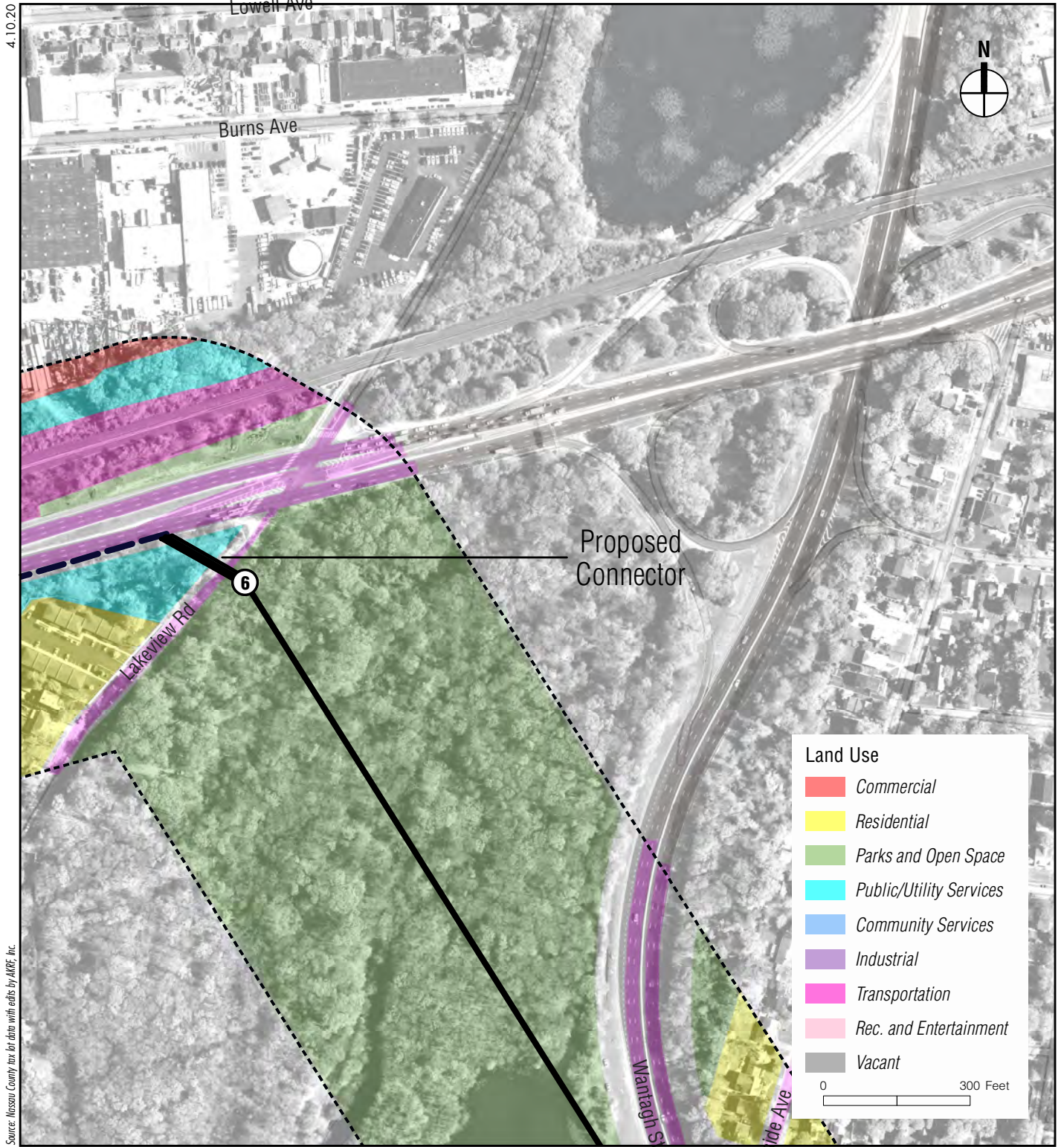
FEMA





NEW YORK STATE

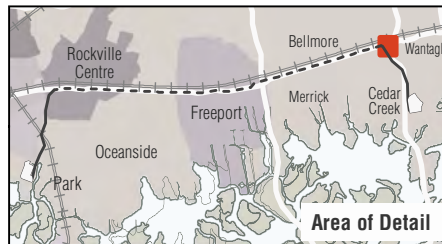
Homeland Security and Emergency Services



Source: Nassau County GIS data with edits by ARRE, Inc.

Proposed Project Elements

- Cedar Creek Shafts
- Cedar Creek Microtunnel
- Sunrise Highway Aqueduct Rehabilitation
- 400-Foot Study Area



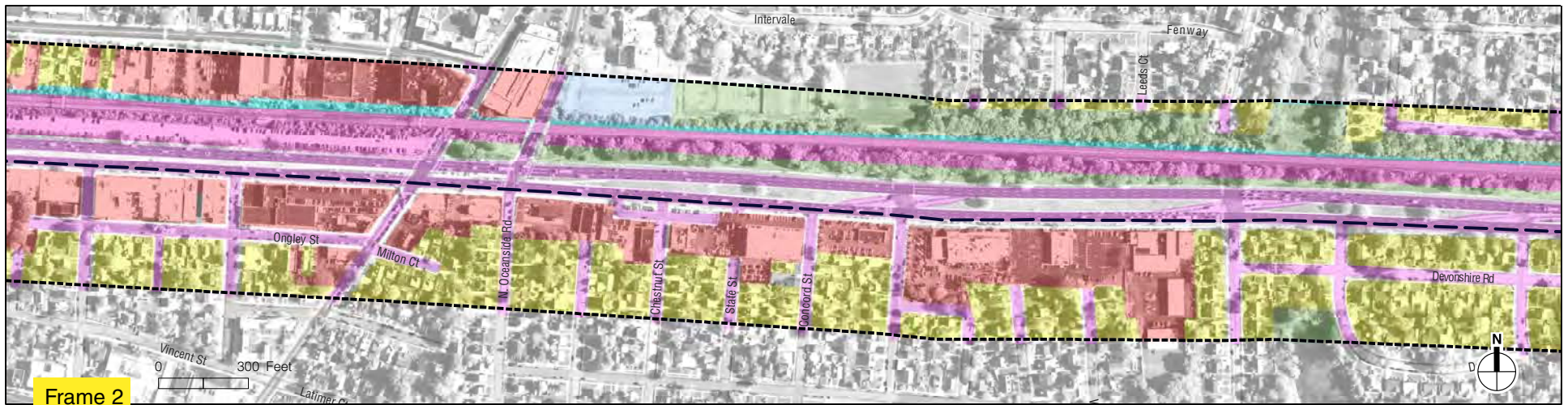
U.S. DEPARTMENT OF HOMELAND SECURITY

FEMA

NASSAU COUNTY STATE OF NEW YORK

NEW YORK STATE

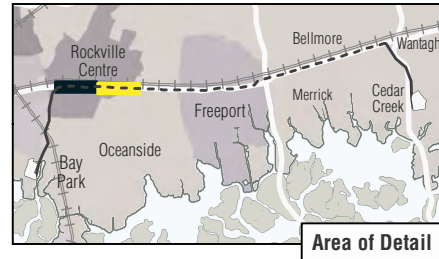
Homeland Security and Emergency Services



Proposed Project Elements

- Sunrise Highway Aqueduct Rehabilitation
- 400-Foot Study Area

Commercial	Public/Utility Services	Rec. and Entertainment
Residential	Community Services	Vacant
Parks and Open Space	Industrial	
	Transportation	



BAY PARK CONVEYANCE PROJECT

Land Use
Figure 5.12-2k



Frame 1

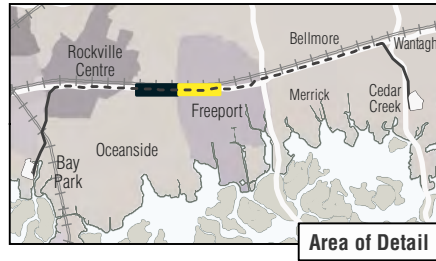


Frame 2

Proposed Project Elements

- Sunrise Highway Aqueduct Rehabilitation
- 400-Foot Study Area

Land Use	Parks and Open Space	Industrial
Commercial	Public/Utility Services	Transportation
Residential	Community Services	Vacant



FEMA

**NASSAU COUNTY
STATE OF NEW YORK**

NEW YORK STATE

**Homeland Security
and Emergency Services**

BAY PARK CONVEYANCE PROJECT

Land Use
Figure 5.12-21



Frame 1



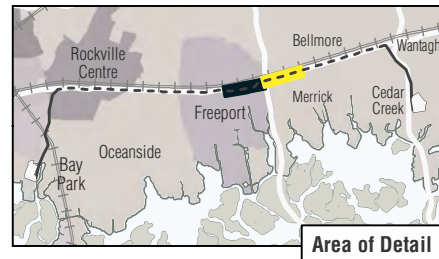
Frame 2

Proposed Project Elements

— Sunrise Highway Aqueduct Rehabilitation

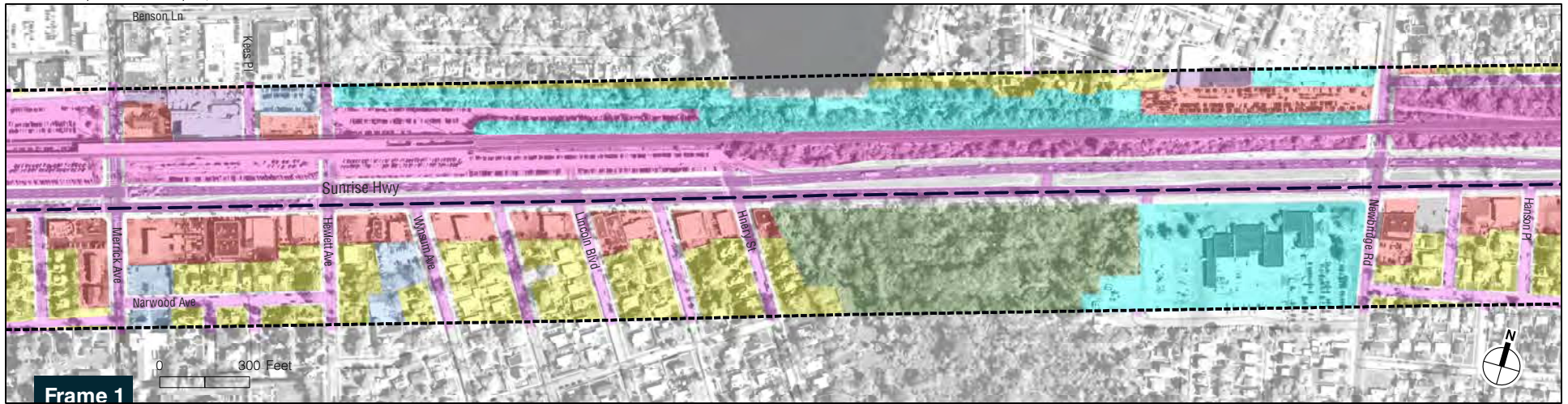
----- 400-Foot Study Area

Land Use	Public/Utility Services	Rec. and Entertainment
Commercial	Community Services	Vacant
Residential	Industrial	
Parks and Open Space	Transportation	



BAY PARK CONVEYANCE PROJECT

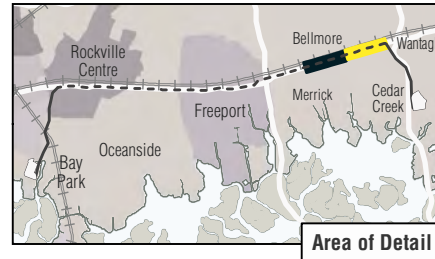
Land Use
Figure 5.12-2m



Proposed Project Elements

- Sunrise Highway Aqueduct Rehabilitation
- 400-Foot Study Area

Commercial	Public/Utility Services	Rec. and Entertainment
Residential	Industrial	Vacant
Parks and Open Space	Transportation	



FEMA

NASSAU COUNTY
STATE OF NEW YORK

NEW YORK STATE

Homeland Security and Emergency Services