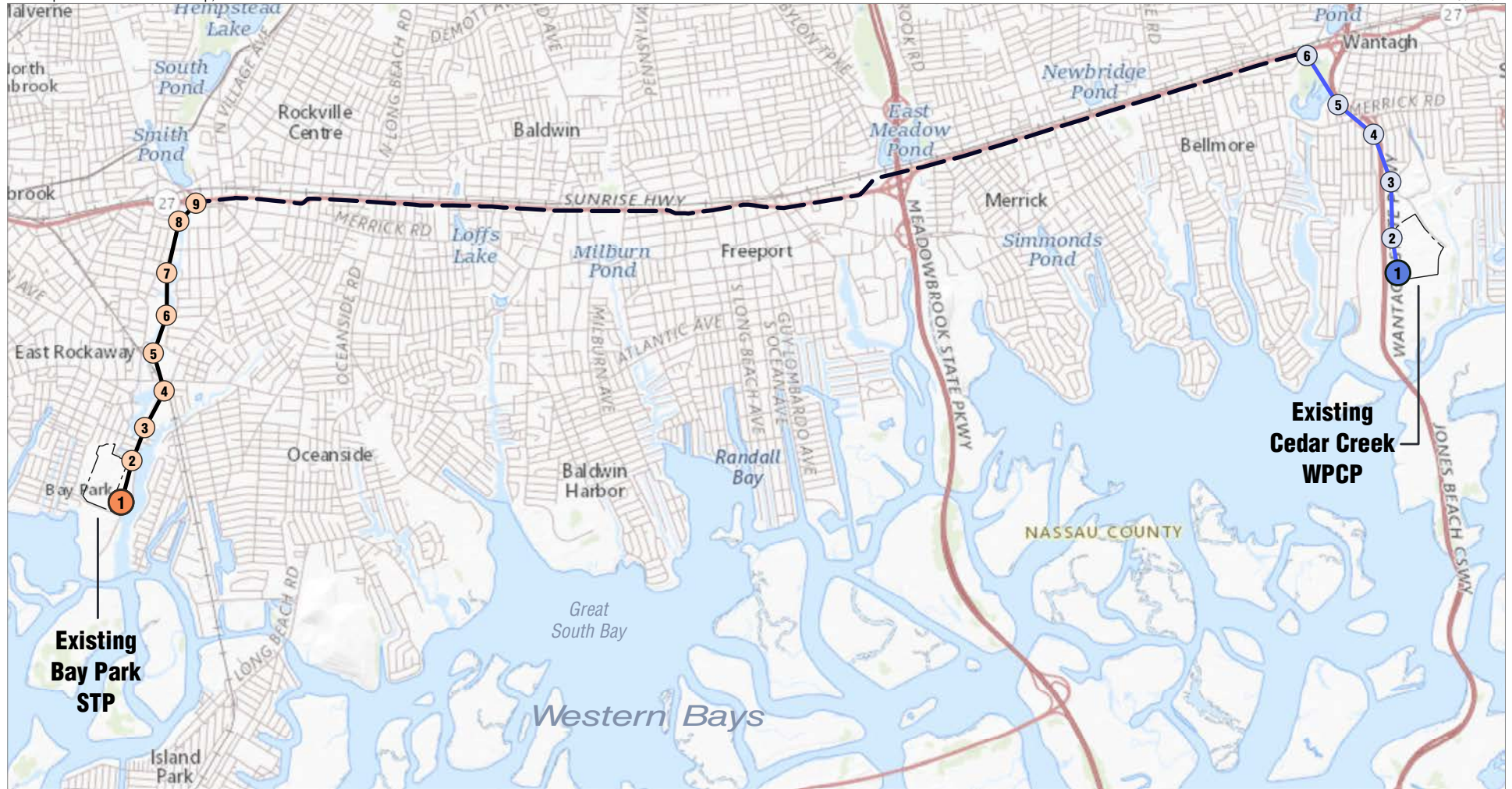


**Environmental Assessment
Bay Park Conveyance Project**

**Appendix A
Figures**



Proposed Project Elements

- 1 Bay Park Shaft and Pump Station
- 2 Bay Park Shafts
- 3 Cedar Creek Shaft and Standpipe Receiving Tank
- 4 Cedar Creek Shafts
- Bay Park/Cedar Creek Microtunnel
- Sunrise Highway Aqueduct Rehabilitation



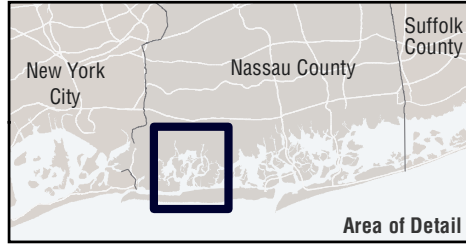
BAY PARK CONVEYANCE PROJECT

Project Location
Figure 4.2-1

3.11.20

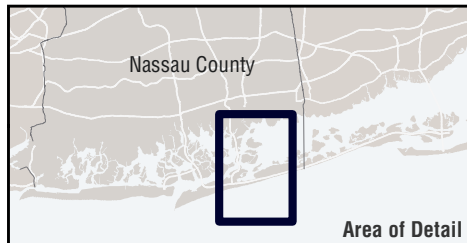
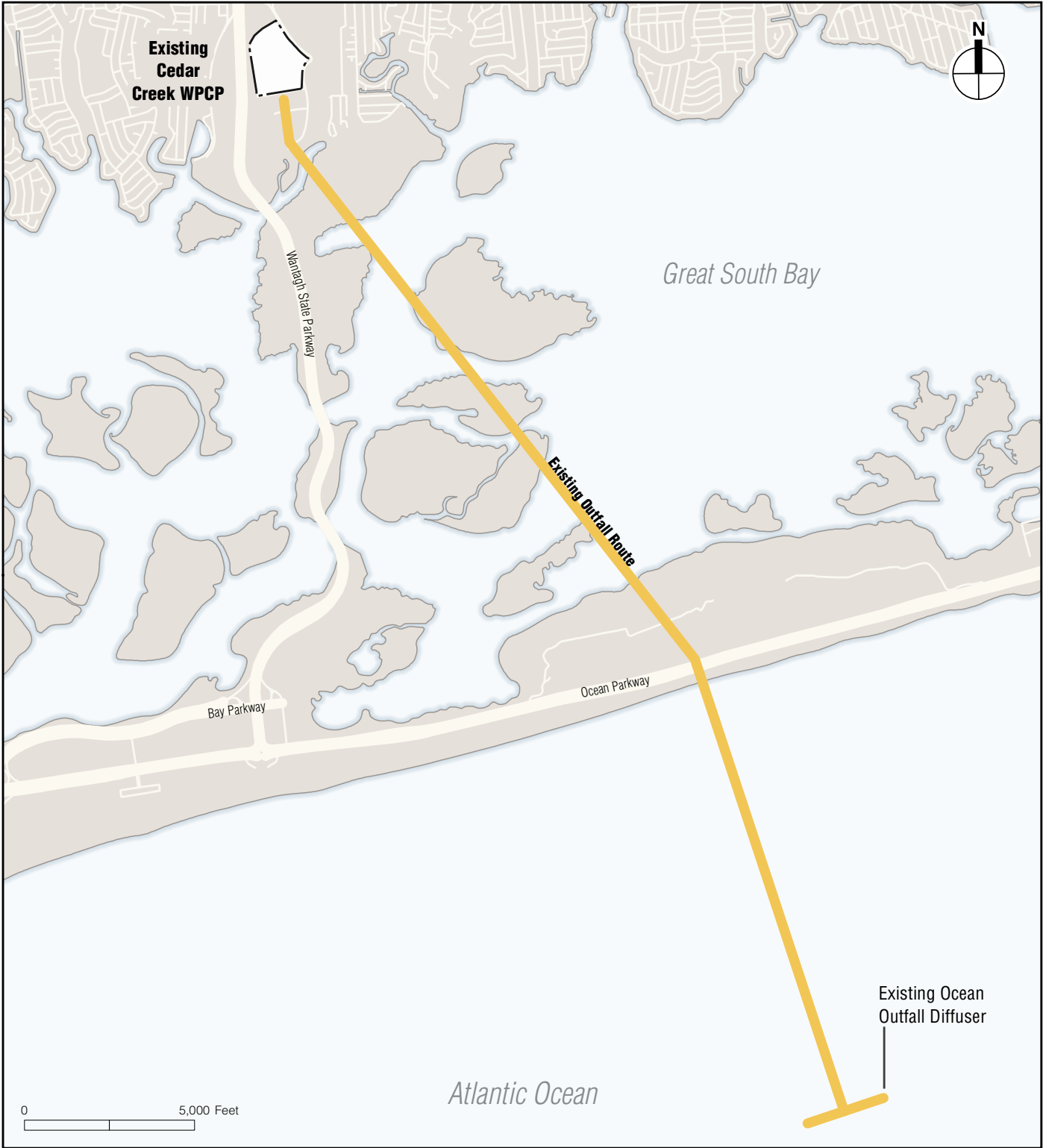


AKRF, Inc.



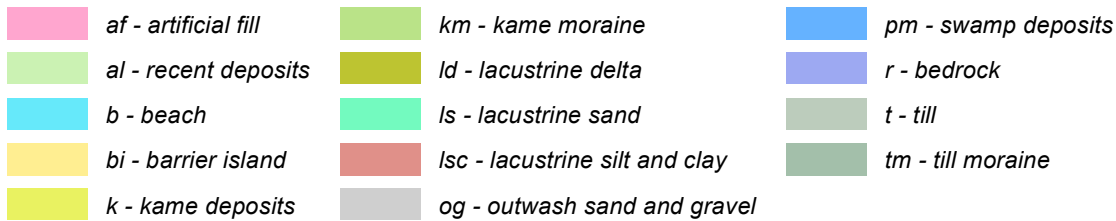
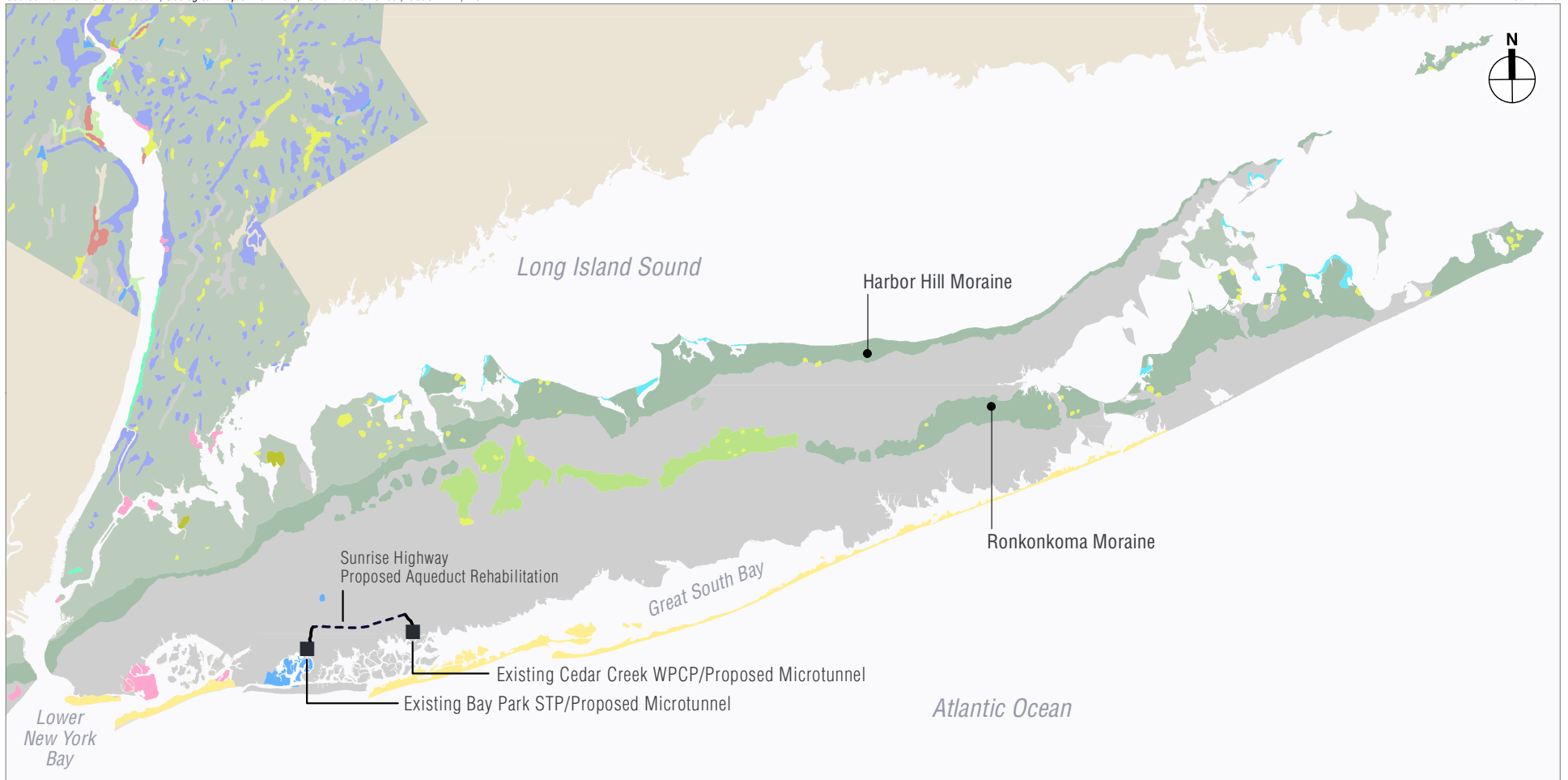
| | | |
|--|--|--|
| | <p>FEMA</p> | |
| | <p>Homeland Security and Emergency Services</p> | |

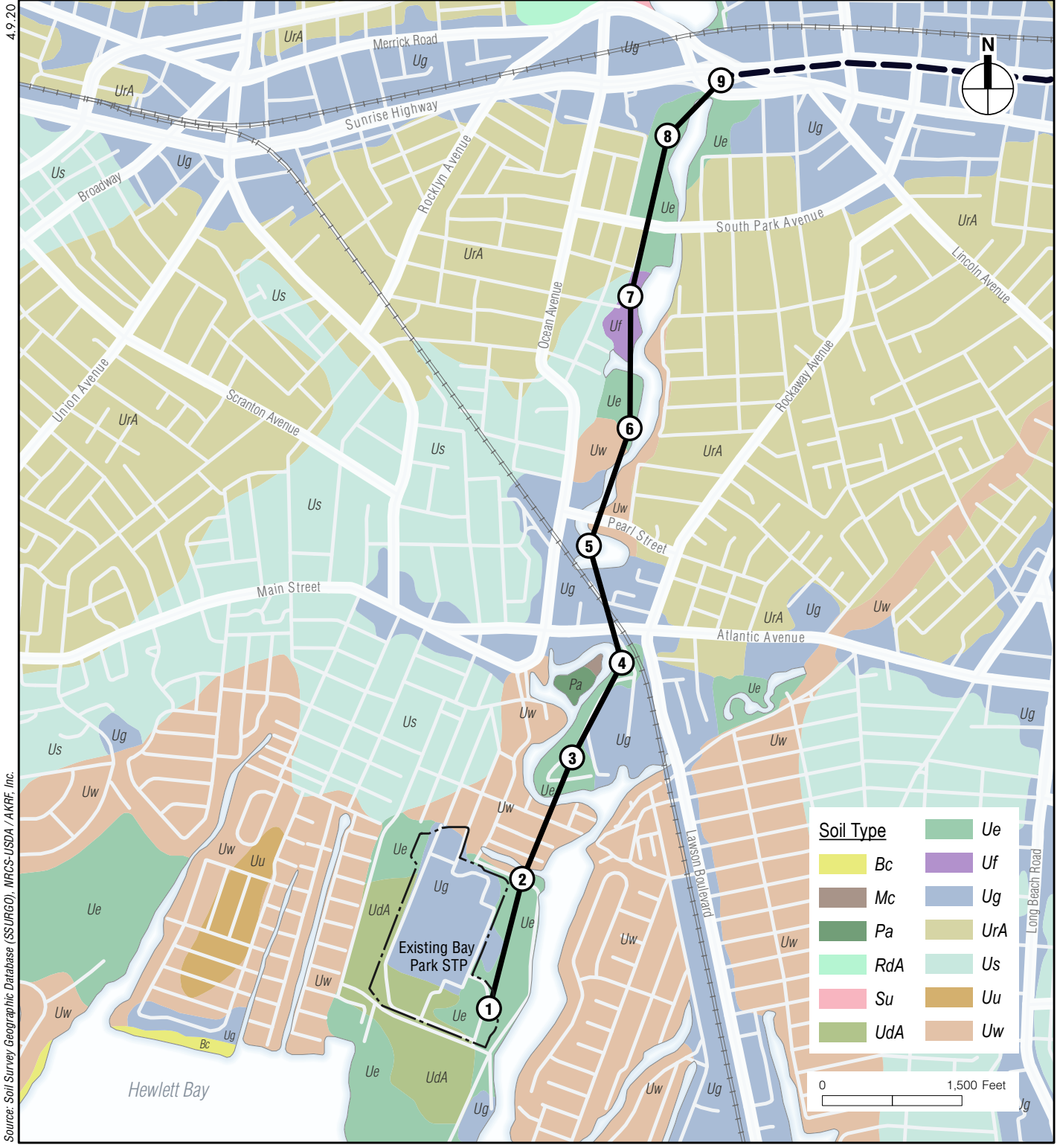
5.5.20
AKRF, Inc.



| | | |
|--|---|---|
|  |  |  |
|  | Homeland Security and Emergency Services | |

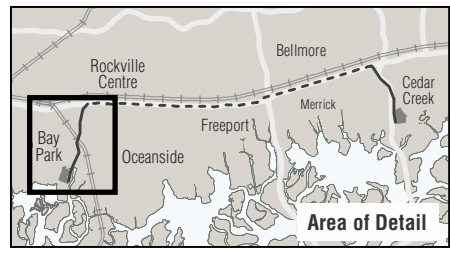
Cedar Creek Existing Ocean Outfall
Figure 4.2-3





Proposed Project Elements

- Bay Park Shaft
- Bay Park Microtunnel





FEMA

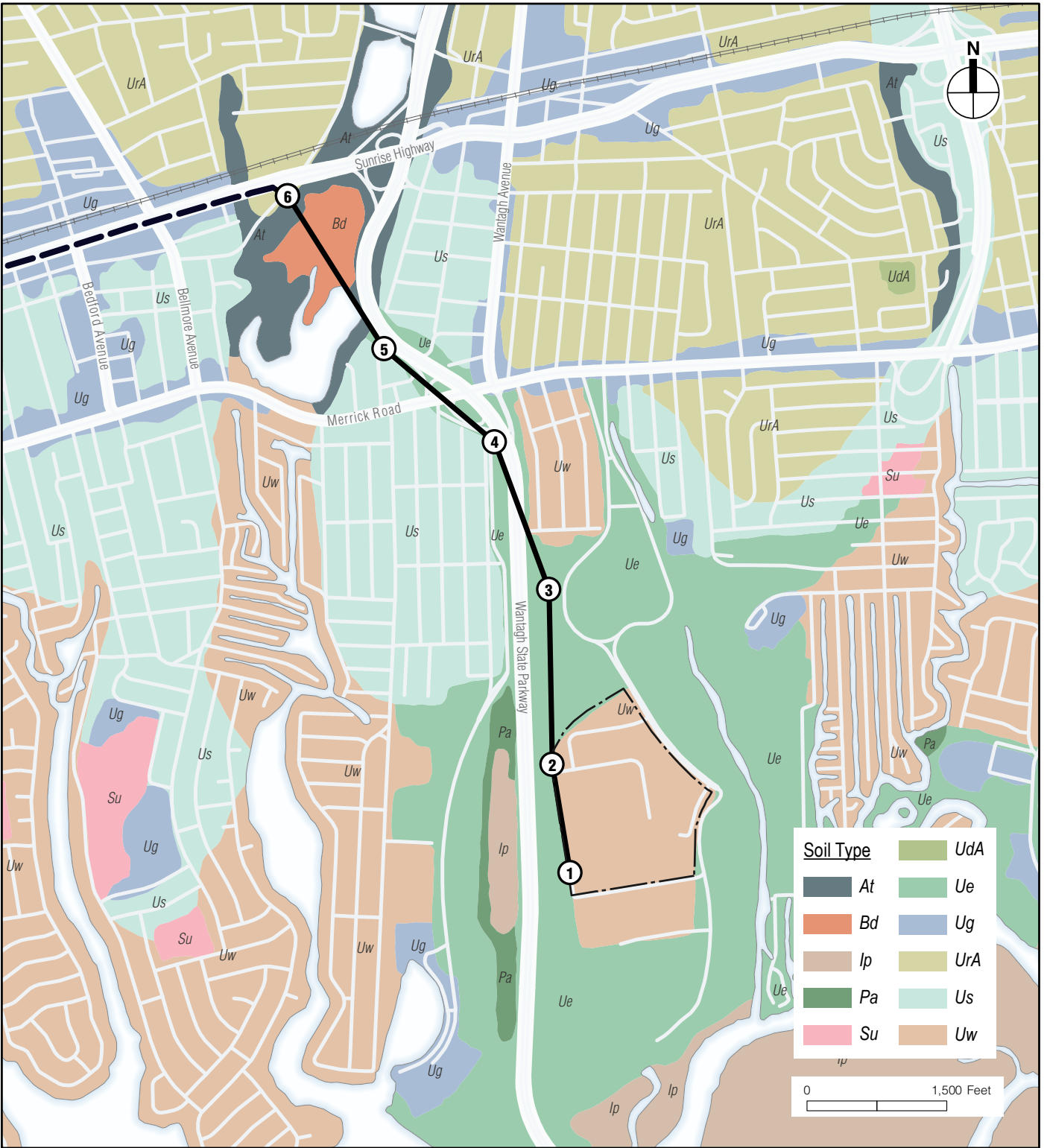


**NASSAU COUNTY
STATE OF NEW YORK**



NEW YORK STATE

**Homeland Security
and Emergency Services**



Proposed Project Elements

- Cedar Creek Shaft
- Cedar Creek Microtunnel
- Sunrise Highway Aqueduct Rehabilitation





FEMA

U.S. DEPARTMENT OF
HOMELAND SECURITY

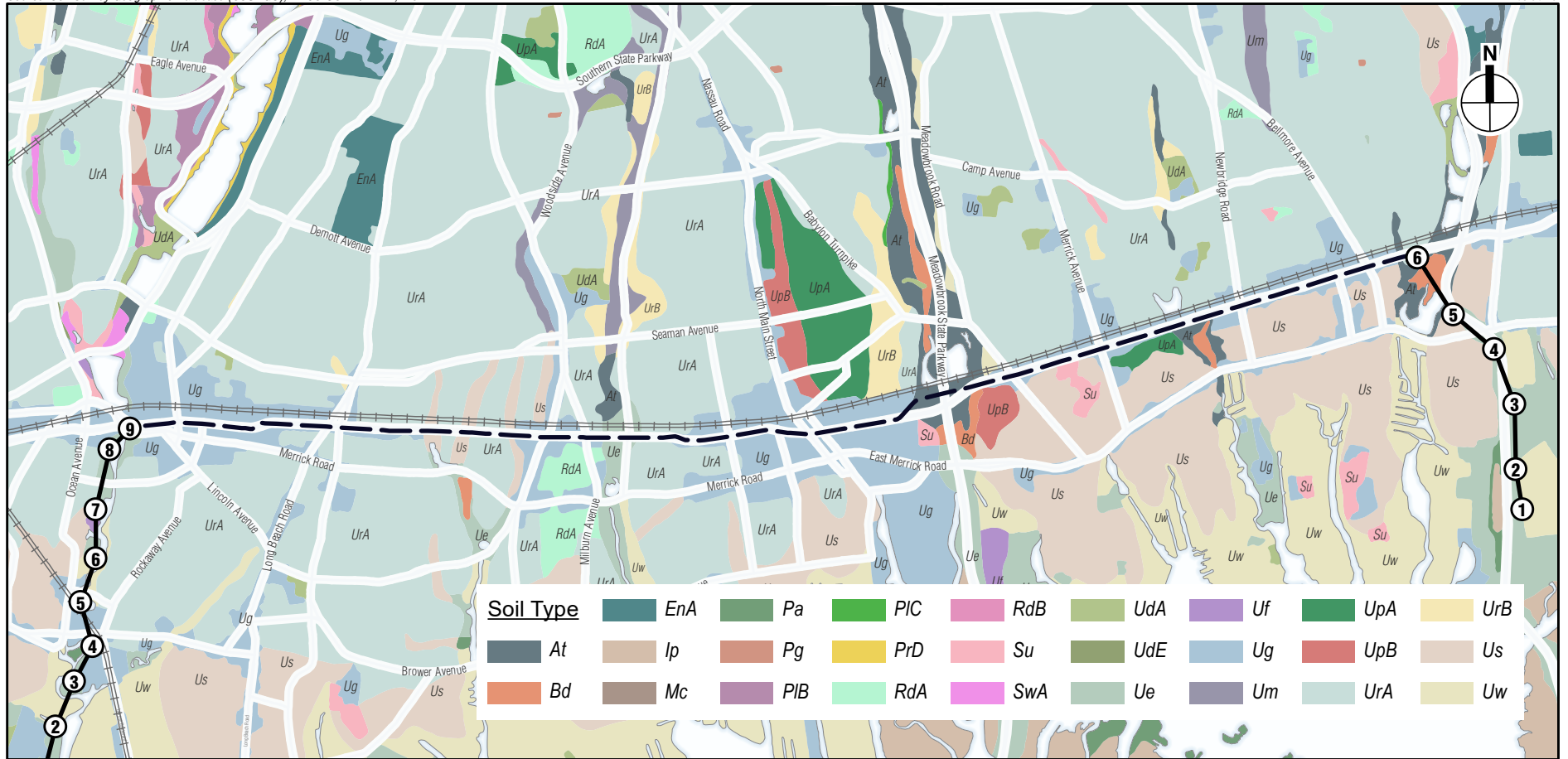


NASSAU COUNTY
STATE OF NEW YORK



NEW YORK
STATE

**Homeland Security
and Emergency Services**



Proposed Project Elements

- Bay Park/Cedar Creek Shaft
- Bay Park/Cedar Creek Microtunnel
- Sunrise Highway Aqueduct Rehabilitation

