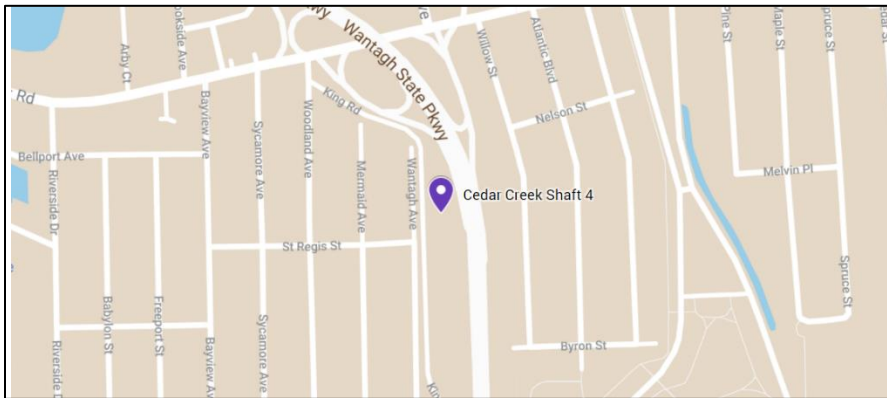


Dear Neighbor:

We are writing to update you on the construction of the Bay Park Conveyance Project. The Bay Park Conveyance Project is a partnership between the New York State Department of Environmental Conservation (NYSDEC) and the Nassau County Department of Public Works (NCDPW). Western Bays Constructors (WBC) is the design-builder for this innovative Project.

The Project will convey treated water from the South Shore Water Reclamation Facility at Bay Park (formerly known as the Bay Park Sewage Treatment Plant) to the existing Cedar Creek Water Pollution Control Plant's ocean outfall pipe, which discharges and diffuses treated water three miles offshore in the Atlantic Ocean. Construction involves underground microtunneling within your community. Microtunneling is a safe, effective way to install piping deep into the ground, avoiding long trenches and surface disturbance. As construction continues, we want to give you as much information as possible.



Cedar Creek Shaft 4 (CC4) is located off King Road near St Regis Street. Work Zone Traffic Control signage has been placed near the shaft site to assist the traveling public in navigating around the area. The shaft site has been secured with fencing and construction related equipment will continue to mobilize. In advance of microtunneling activities, crews will excavate a deep shaft into the ground (approximately 24-26 feet in diameter). Below is a sequence of events that will take place at this location.

### 1. Guidewall Installation

Starting the week of 2/7/2022, crews will begin to install a guidewall for CC4. Guidewall installation requires machinery such as excavators, concrete trucks and more.



*Guidewall installation at Cedar Creek Shaft 2*

## 2. Support of Excavation (SOE) Machine Mobilization

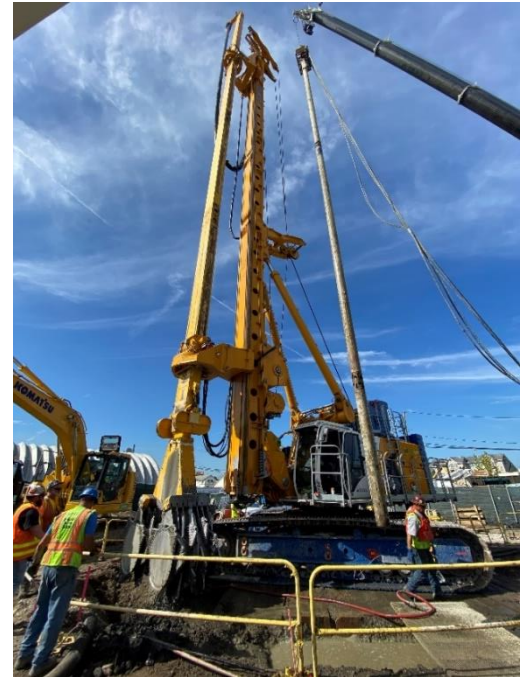
Following guidewall installation, trucks, cranes, and other machinery will be brought to the site of CC4 to support construction activities and excavation. These machines can extend up to 100 feet high and will be noticeable from a distance.

## 3. SOE Installation

Beginning in approx. March 2022, SOE will be installed to protect the earth during excavation. This specific SOE, Cutter Soil Mix, mixes grout with soil to create the walls of the microtunneling shaft. SOE installation requires machinery and may cause periods of noise and vibration in areas directly adjacent to the work site. In adherence to our community commitment, WBC will continue to monitor noise as well as any potential vibrations and settlement from construction activities. These construction activities will take place Monday through Friday from approximately 6 AM – 7 PM.

## 4. Excavation

After SOE installation is complete, construction at CC4 will require excavation approximately 50 feet below the surface. Excavators and cranes will be used to perform this activity, and dump trucks will be used to move the excavated material off site.



*SOE installation at Bay Park Shaft 3*

Following excavation, microtunneling equipment will be brought to the site. The WBC Community Outreach Team will continue to update you as the Project progresses.

Through a dedicated Community Outreach Program, WBC is committed to a robust engagement process and to maintaining an open line of communication throughout construction. We are also committed to minimizing disruption to neighborhoods near by construction. WBC's Community Outreach Team will be available to answer questions and act as a project liaison throughout the duration of construction.

For more information on this activity, we encourage you to visit our website <http://www.BayParkConveyance.org> and Facebook page [@BayParkConveyance](https://www.facebook.com/BayParkConveyance) and register for email updates. Our Community Information Center is located at 265 Sunrise Highway in Rockville Centre and open Mondays, Wednesdays, and Fridays: 8AM – 3PM, Tuesdays and Thursdays: 12PM – 7PM, and every other Saturday beginning 1/8/2022: 9AM – 12PM. You may contact us via the Project's 24/7 hotline at (516) 252-6121 or email us at [BayParkConveyance@gmail.com](mailto:BayParkConveyance@gmail.com) with any questions.

Respectfully,

**Margo K. Cargill**  
Community Ambassador

