



The Bay Park Conveyance Project

A Western Bays Resiliency Initiative

**Elected Officials/First Responders
Monthly Meeting
January 25, 2022**



Department of
Environmental
Conservation





Agenda

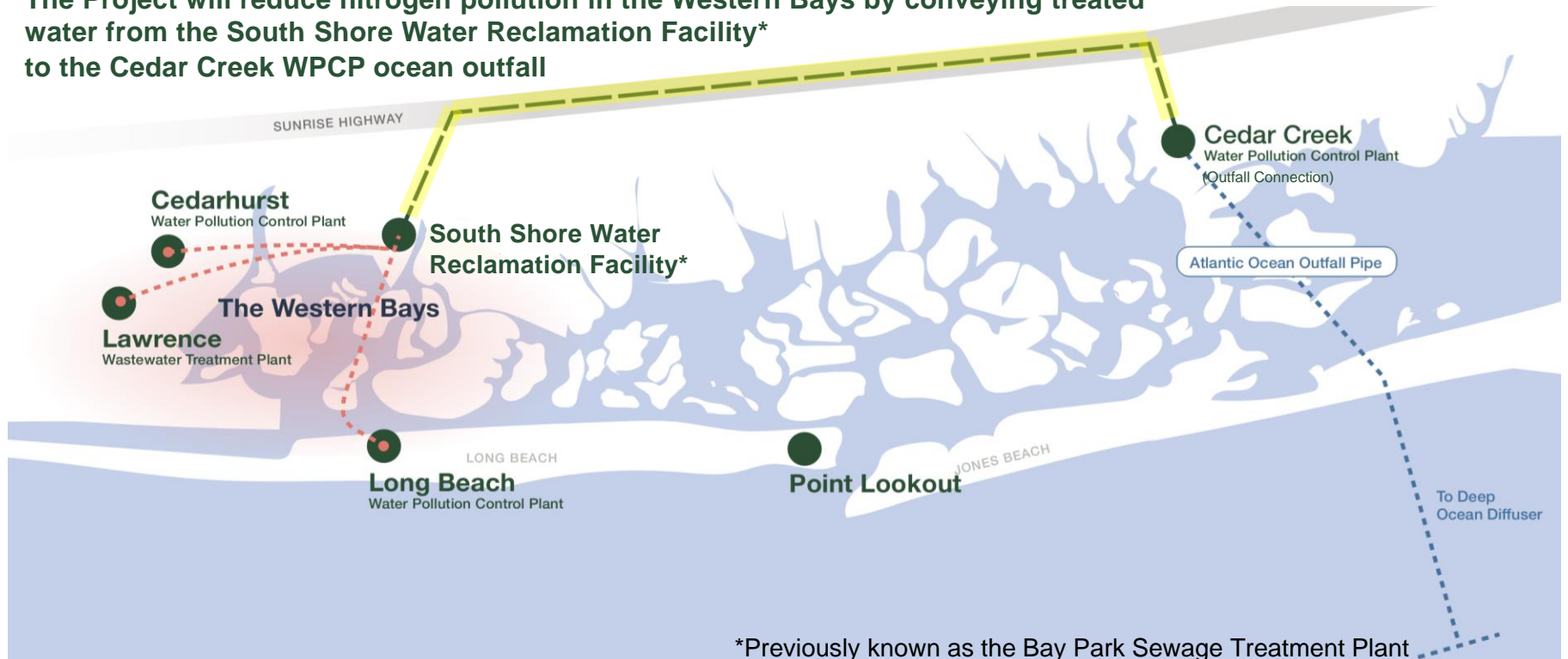
- 1. Project Background**
- 2. Construction Updates**
- 3. Stakeholder Engagement**
- 4. Question and Answer Session**



Project Background

The Bay Park Conveyance Project

The Project will reduce nitrogen pollution in the Western Bays by conveying treated water from the South Shore Water Reclamation Facility* to the Cedar Creek WPCP ocean outfall



*Previously known as the Bay Park Sewage Treatment Plant

Project Benefits



Storm Protection

Spur the rapid ecological recovery of the Western Bays marshlands which will protect coastal communities from storm surge and sea level rise



Quality of Life Factors

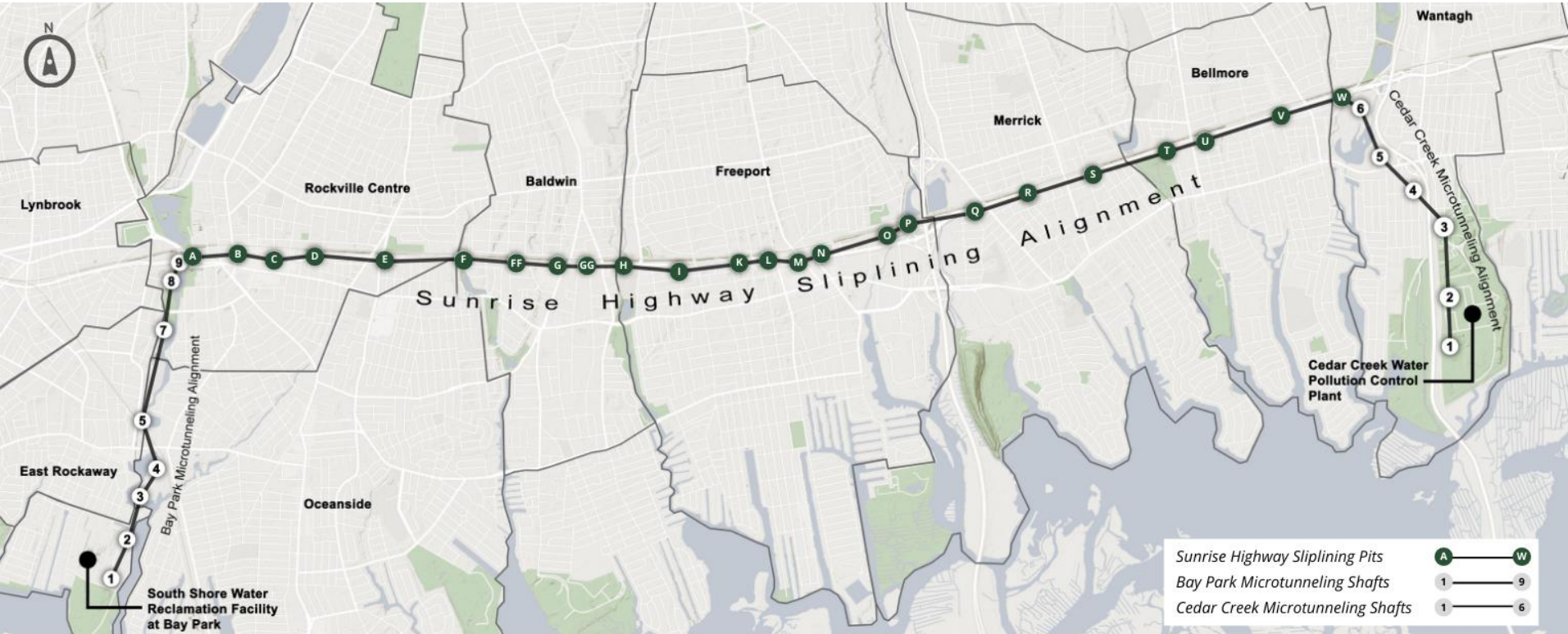
Maximize quality of life by providing residents a place to work and play



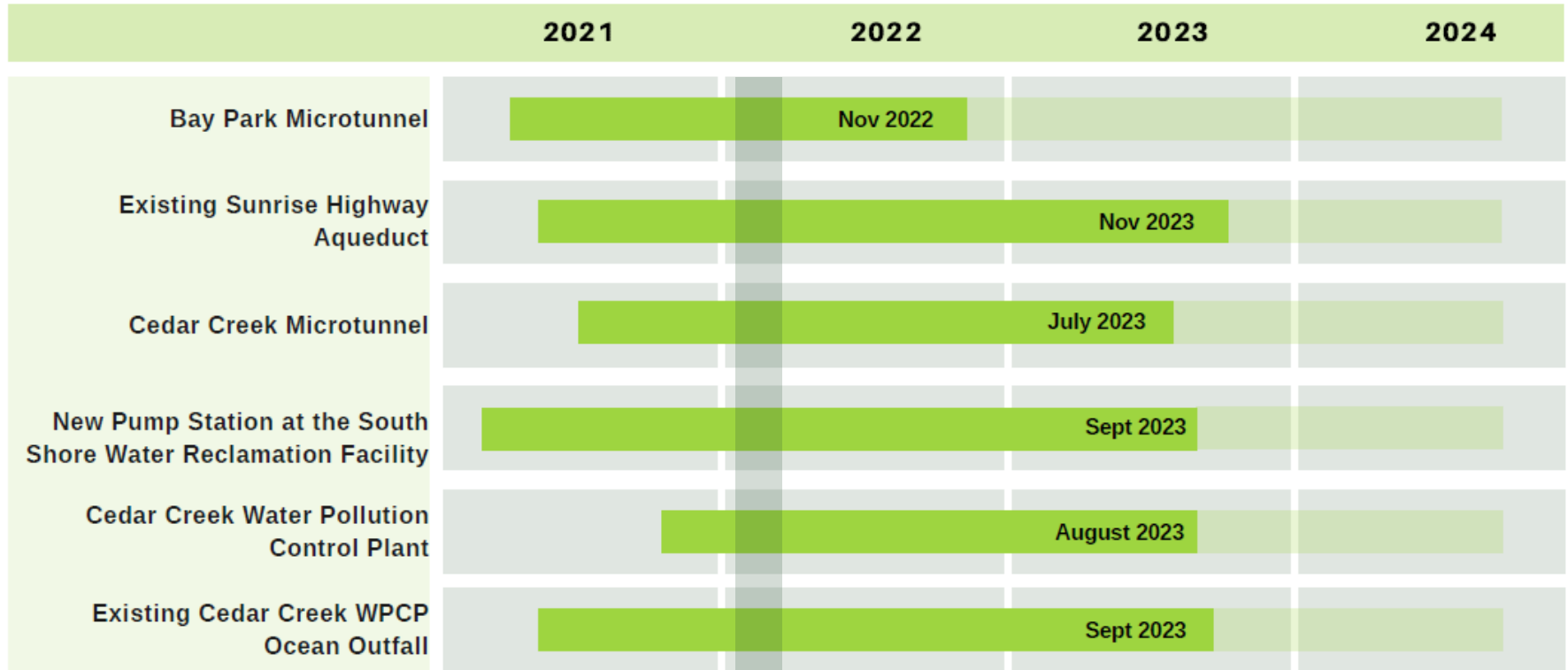
Economic Benefits

The ecological recovery of the Western Bays and improved water quality will enhance and expand water-based recreational and commercial opportunities

Bay Park Conveyance Project Overview



Project Timeline



We Are Here

Final Acceptance Aug 2024

Construction Techniques

- **Microtunneling** - A technique used to install piping deep into the ground
- **Sliplining** - Utilizes existing infrastructure by inserting a new pipe into an existing pipe
- **Support of Excavation (SOE)** - Used to support the earth during excavation
- **Jet Grouting** - A technique used as a means for groundwater control



CSM Panel Installation at BP1, November 2021



Construction Updates

Bay Park Alignment

- **BP1:** Shaft and wet well excavation complete. Site prepared to receive Microtunnel Boring Machine (MTBM) from BP2. Jet grout at diversion structure nearing completion.
- **BP2:** MTBM is on site, being assembled and prepared for the start of microtunneling to BP1.
- **BP3:** Support of Excavation (SOE) and jet grout complete, shaft excavation commenced.



Guide Wall Construction at BP4, January 2022

Bay Park Alignment

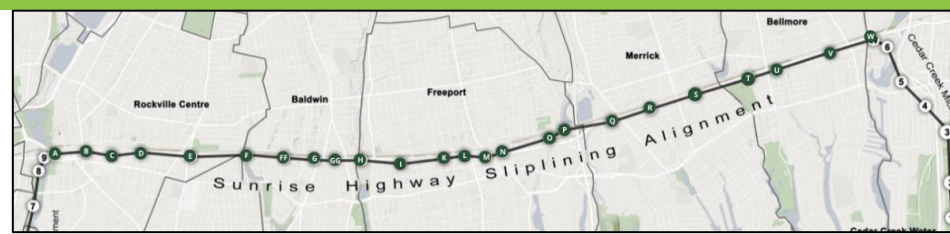
- **BP4:** Guide wall installation complete, SOE ongoing, excavation to follow.
- **BP5:** SOE installation commenced, jet grout installation upcoming, parking modification at Oxbow Park in place.
- **BP7:** Site is being prepared in advance of SOE installation.
- **BP8:** Jet grout complete and site prep complete. Shaft excavation will follow CC2 and CC3.
- **BP9:** Maintenance and Protection of Traffic (MPT) installed. Clearing, grubbing, and site prep complete. Utility relocation expected to begin in March.



Secant Pile Installation at BP4, January 2022

Sunrise Highway Alignment

- Ongoing test pit and survey work.
- **Pits O to P:** Pipe jacking to commence off the roadway. First locations to begin sliplining operation.
- **Pits Q, R, and S:** Sheet pile installation nearing completion, MPT in place overnight. Excavation to follow.
- **Pit D:** A construction entrance has been established at Joyce Field in Rockville Centre for storage and laydown of materials.
- **BP9 / Pit A:** A construction entrance has been established at the Sunrise Hwy/Merrick Rd Interchange.



Pit Construction at Pit Q, January 2022

Protection of Traveling Public and Work Zones

- Work Zone Traffic Control (WZTC) and Maintenance and Protection of Traffic (MPT) Signage is deployed to assist motorists and pedestrians around WBC work areas.
- Variable Message Signage (VMS) boards are deployed in advance of lane closures.
- Weekly “Before You Go” Facebook posts highlight lane closures for the week ahead.
- Canvassing notifications to nearby residents and businesses as needed.
- Addition of 6th workday may begin in February.



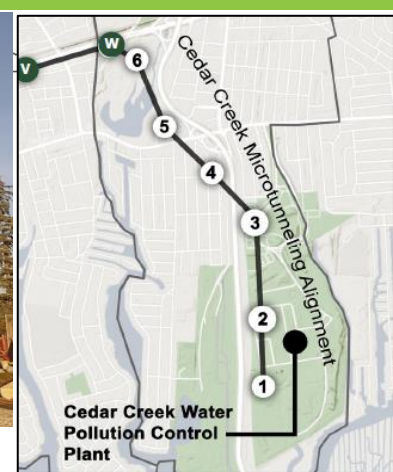
MPT deployed at Pit F on Sunrise Highway, May 2021

Cedar Creek Alignment

- **CC1:** Utility relocation and guide wall construction ongoing, SOE installation complete, excavation to follow.
- **CC2:** Jet grout complete, excavation to follow, MTBM on site in preparation for microtunneling.
- **CC3:** SOE and jet grout complete, Jones Beach Bike Path remains open.
- **CC4, CC5, CC6:** Clearing and grubbing underway, shaft construction to follow.



Excavation at CC2, November 2021



Guide Wall Installation at CC3, December 2021

Tree Removal and Restoration

- Some vegetation and trees require removal across the Project alignment to facilitate construction.
- New York State Department of Environmental Conservation (NYSDEC) and Nassau County Department of Public Works (NCDPW) are **committed** to, at minimum, replacing trees removed during construction.
- A tree restoration plan and schedule for replanting are being developed, and restoration details will be shared as information becomes available



Clearing and Grubbing at CC4, January 2022

Spotlight on Safety & Construction Site Tidiness



- All work pits and shafts will be enclosed and protected with fencing, inaccessible to the public.
- WBC is following all OSHA guidelines.
- Quality control team is present during each operation.

Our Community Commitment

- Environmental monitoring is underway across the Project corridor to monitor and address any potential noise, dust, vibrations and settlement from construction activities.
- As part of monitoring for the protection of property, WBC conducts pre-construction inspections of structures within the construction vicinity to serve as a benchmark for pre-construction conditions. WBC monitors the effects of construction activities and will take corrective actions as needed.



Site Preparation at BP1, March 2021



Stakeholder Engagement

Community Outreach Program

- Door-to-door canvassing
- Construction lookaheads and e-blasts
- Upcoming public information session in February 2022
- Regular meetings with project stakeholders
- Dedicated 24/7 project hotline, email, Facebook & website
- 25 virtual or in-person meetings since NTP
- “Before You Go” Facebook campaign posted weekly
- Coordination with Nassau County Emergency Services
- “What’s Happening Here” signs at each work location
- Inter-project coordination to engage local schools
- MTBM Naming Contest winners announced, ceremony followed, and certificates delivered to participants
- Attendance at community events



Community Ambassador at Bellmore Fair, September 2021

Contact Us



24/7 Project Hotline
(516) 252-6121



Community Information Center
265 Sunrise Highway
Rockville Centre, New York, 11570
**See website for hours*



Email
BayParkConveyance@gmail.com



Facebook
@BayParkConveyance



Website
www.BayParkConveyance.org



Question and Answer Session



Thank You!