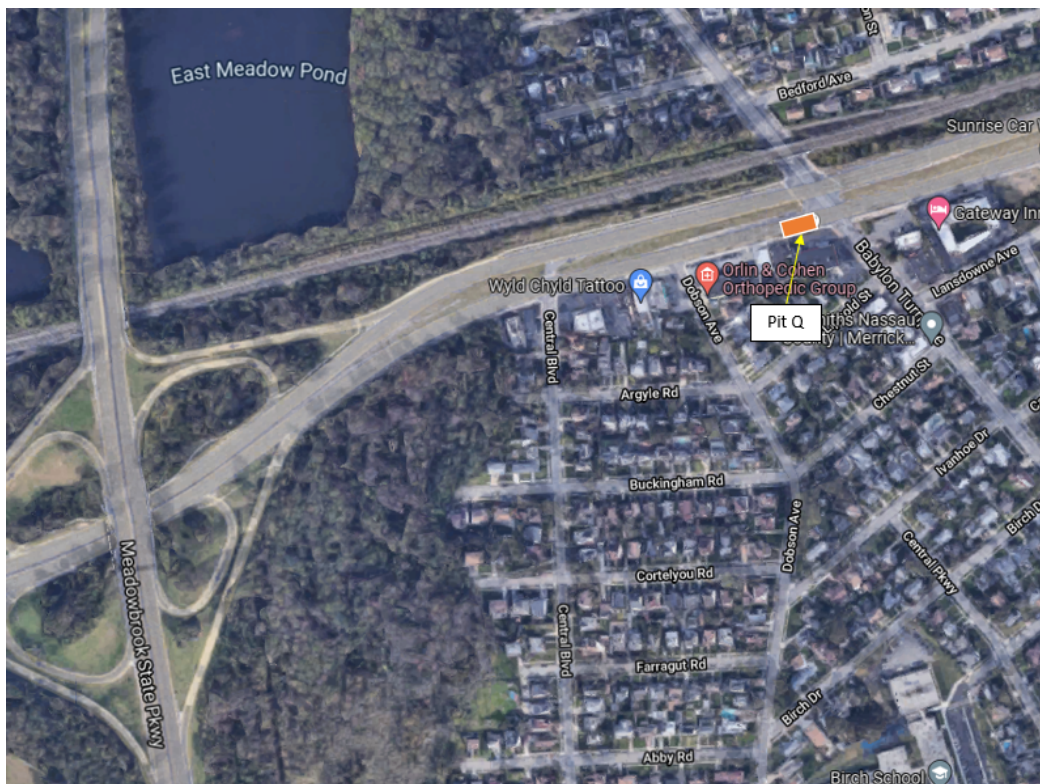


Dear Neighbor:

We are writing to update you on the construction of the Bay Park Conveyance Project. The Bay Park Conveyance Project is a partnership between the New York State Department of Environmental Conservation and the Nassau County Department of Public Works. Western Bays Constructors (WBC) is the design-builder for this innovative Project.

The Project will convey treated water from the South Shore Water Reclamation Facility at Bay Park (formerly known as the Bay Park Sewage Treatment Plant) to the existing Cedar Creek Water Pollution Control Plant's ocean outfall pipe. As part of this conveyance, the Project includes repurposing an existing aqueduct beneath Sunrise Highway, using a technique known as sliplining. Sliplining will occur within your community. Prior to construction, we want to provide you with as much information as possible.

In the coming days, crews will begin to install sheet piles at Pit Q, located in the eastbound lanes on Sunrise Highway, between the intersections at Dobson Ave and at Babylon Turnpike in Merrick. A comprehensive Maintenance and Protection of Traffic (MPT) plan will be put in place to protect the safety of drivers, pedestrians, and workers through the work zone and promote reliable traffic flow. Sheet piles will be installed to support excavation during construction of this sliplining pit, from approximately 9PM to 6AM, Monday through Friday. While work is underway, two eastbound lanes will be closed, and one eastbound lane will be open between approximately Central Boulevard and Babylon Turnpike. Three lanes of traffic will be maintained during the day from 6AM - 9PM. This work is expected to begin in late December and continue for approximately four weeks.



Location of Pit Q on Sunrise Highway

Installation of sheet piles requires heavy machinery and can cause periods of noise and vibration in the areas directly adjacent to the work site. In adherence to our community commitment, WBC will continue to monitor noise as well as any potential vibrations and settlement from construction activities.

These activities are conducted to prepare for sliplining. Sliplining is a technique where crews excavate to the existing aqueduct level at individual pit locations, place a hydraulic jacking machine at the base of the pit, and then slide the new conveyance pipe into the existing aqueduct.

Through a dedicated Community Outreach Program, WBC is committed to a robust engagement process and to maintaining an open line of communication throughout construction. We are also committed to minimizing disruption to neighborhoods affected by construction. WBC's Community Outreach Team are available to answer questions and act as a project liaison throughout the duration of construction.

For more information on this activity, we encourage you to visit our website www.BayParkConveyance.org and Facebook page [@BayParkConveyance](https://www.facebook.com/BayParkConveyance) and register for email updates. Our Community Information Center is located at 265 Sunrise Highway in Rockville Centre and open Mondays, Wednesdays, and Fridays: 8am - 3pm and Tuesdays and Thursdays: 12pm - 7pm. For holiday hours, please check the [Contact Us](#) section of the Project website. You may contact us via the Project's 24/7 hotline at (516) 252-6121 or email us at BayParkConveyance@gmail.com with any questions.

Respectfully,

Margo K. Cargill
Community Ambassador

