

Virtual Meeting Format

1  Members of the public join via URL, Zoom Meeting ID, or Phone

2  Project Presentation

3  Live Question & Answer Session

To Ask a Question

- Use the raise hand feature to indicate you have a question OR enter your question using the chat function at the bottom of the screen.
- When called upon during the live Q&A, a member of the Project Team will unmute your audio. You will then have to unmute yourself.
- State your name and affiliation prior to asking your question.



The Bay Park Conveyance Project

A Western Bays Resiliency Initiative

Public Information Session
July 20, 2021



NEW
YORK
STATE

Department of
Environmental
Conservation



Agenda

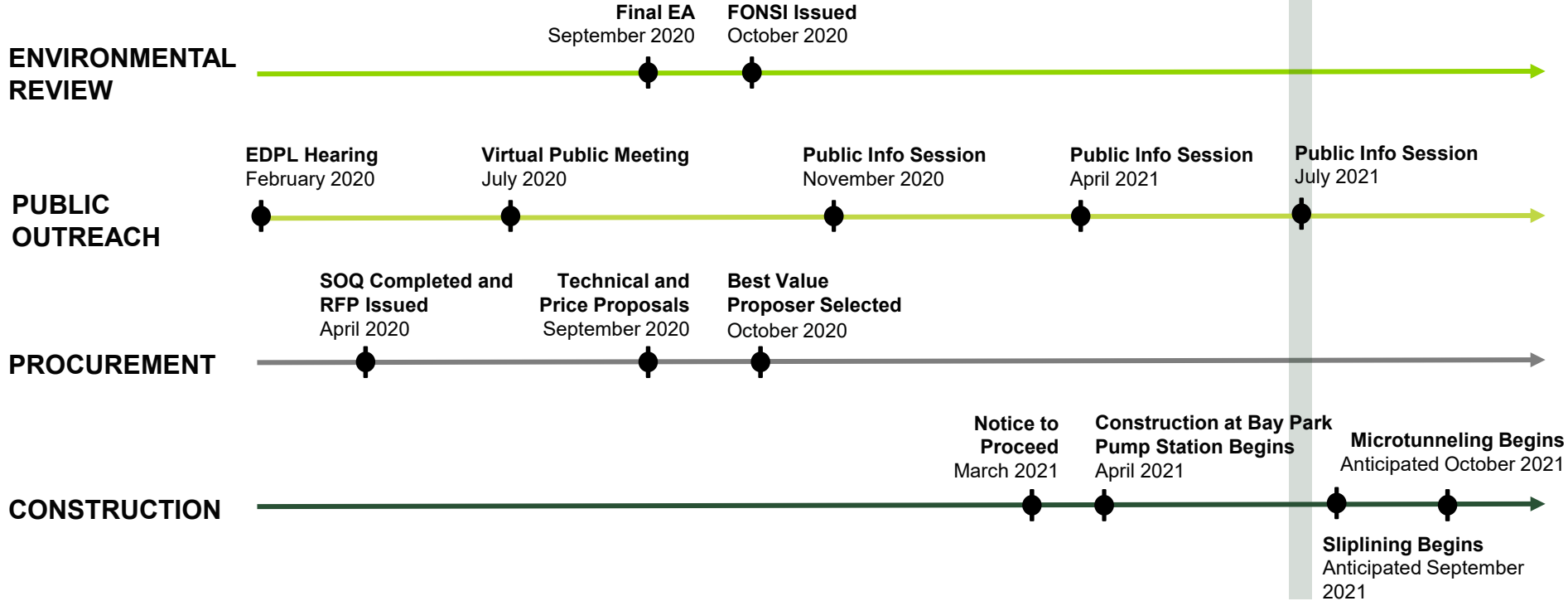
- 1 Bay Park Conveyance Project**
- 2 Construction Overview**
- 3 Construction Look Ahead**
- 4 Public & Stakeholder Outreach**
- 5 Question & Answer Session**



1. The Bay Park Conveyance Project

We Are Here

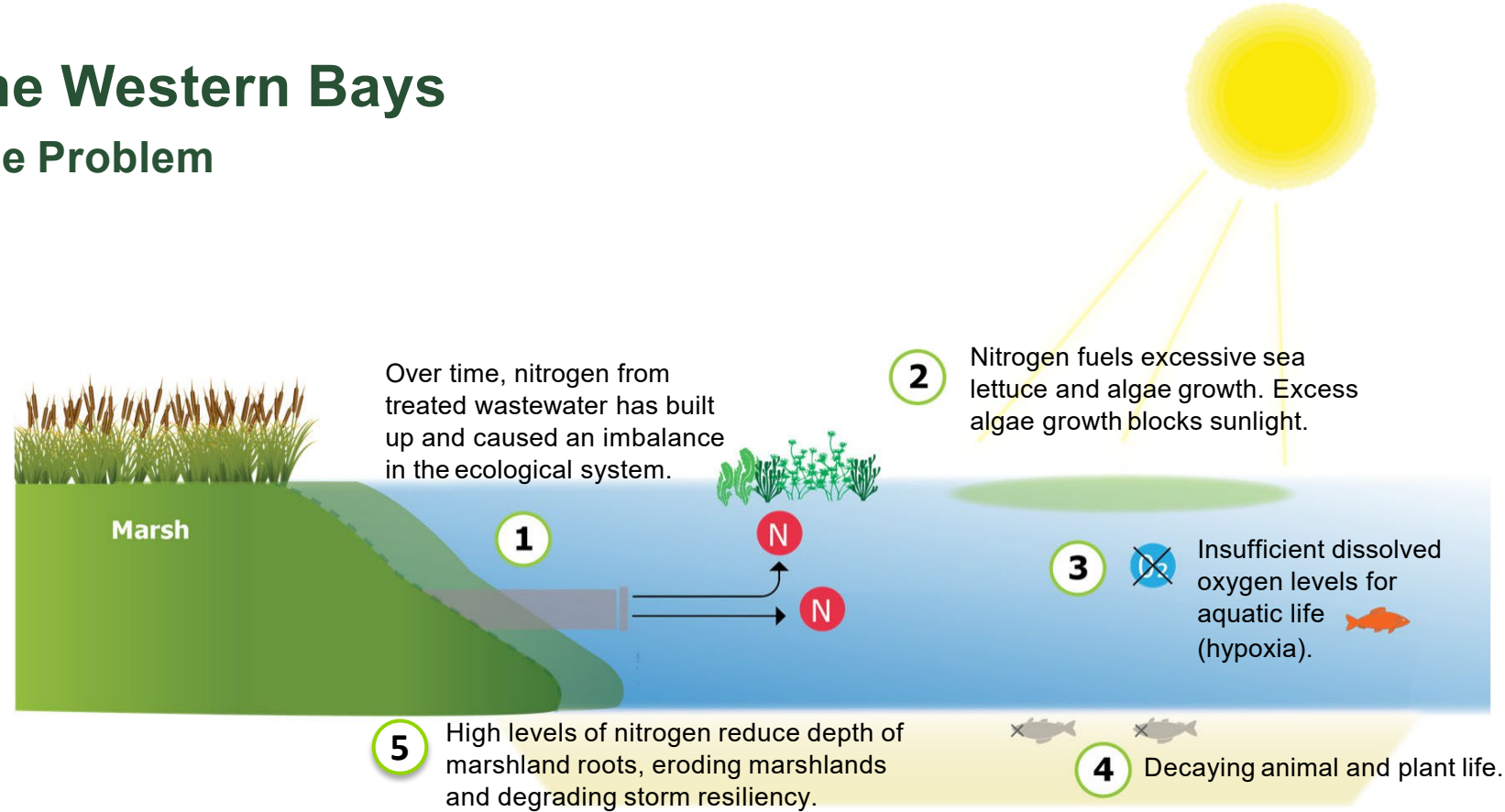
Progress to Date



Construction Completion: November 2023

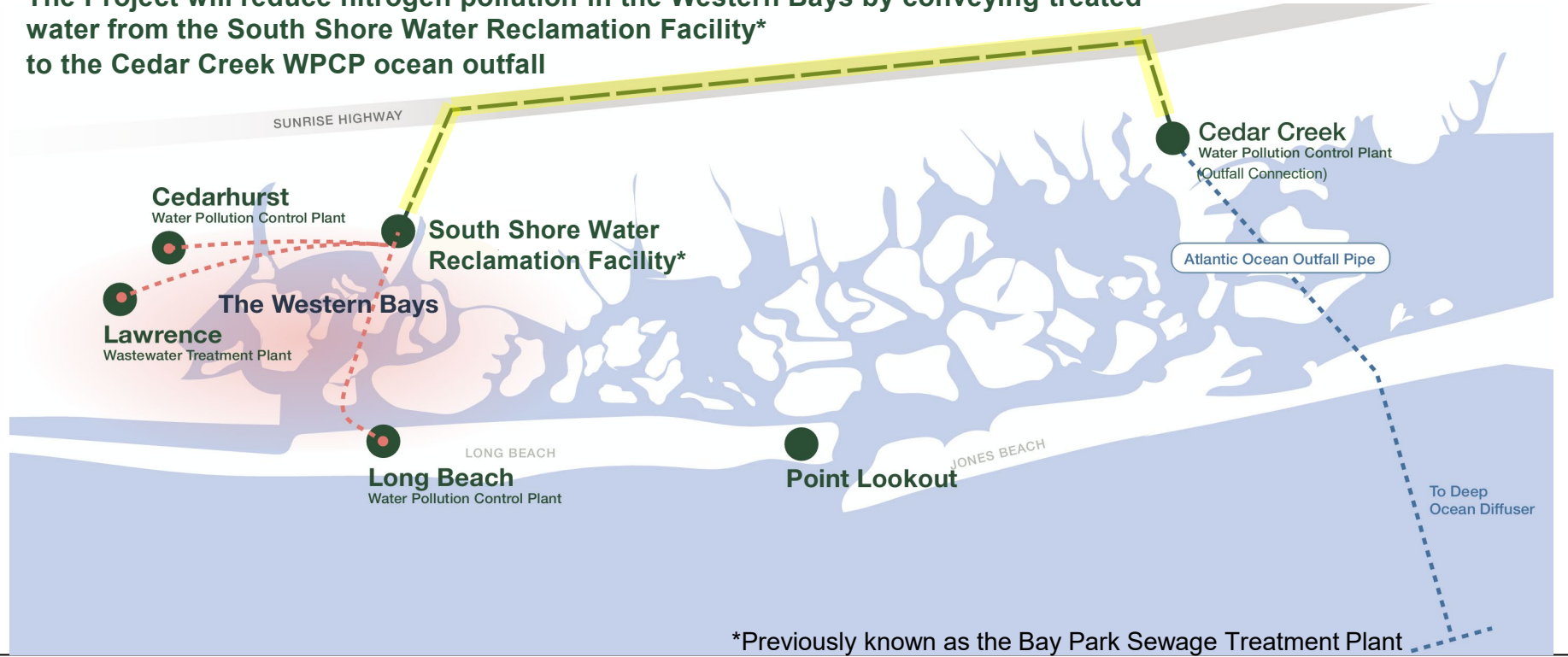
The Western Bays

The Problem



The Solution: The Bay Park Conveyance Project

The Project will reduce nitrogen pollution in the Western Bays by conveying treated water from the South Shore Water Reclamation Facility* to the Cedar Creek WPCP ocean outfall



*Previously known as the Bay Park Sewage Treatment Plant

Project Benefits



Storm Protection

Spur the rapid ecological recovery of the Western Bays marshlands which will protect coastal communities from storm surge and sea level rise



Quality of Life Factors

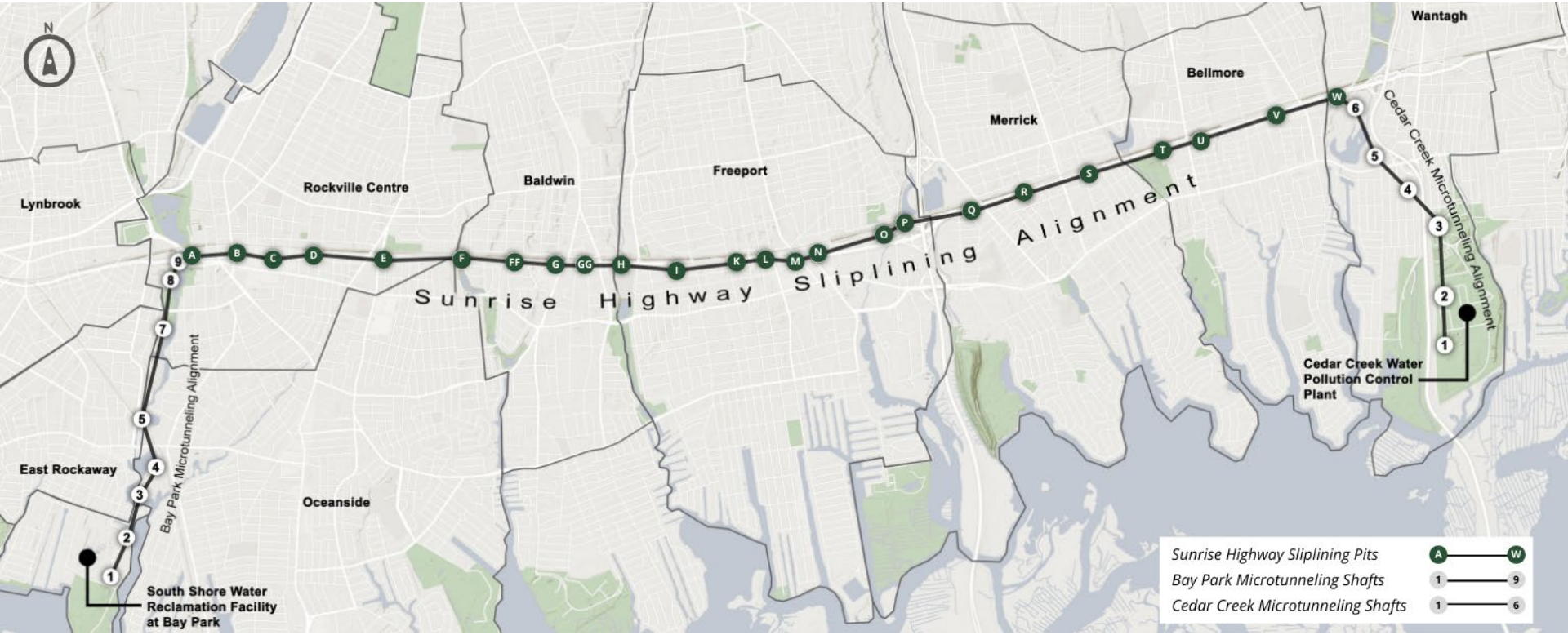
Maximize quality of life by providing residents a place to work and play



Economic Benefits

The ecological recovery of the Western Bays and improved water quality will enhance and expand water-based recreational and commercial opportunities

Bay Park Conveyance Project Overview



Project by the Numbers


- 8 Bay Park Microtunneling Shafts
- 24 Work Pits along Sunrise Highway Aqueduct
- 6 Cedar Creek Microtunneling Shafts
- 57,024 Total Linear Feet of Pipe
- 42 Months of Construction



2. Construction Overview

Western Bays Constructors (WBC)

WBC, the design-build contractor, has assembled a team with an unparalleled track record in complex projects featuring companies with world class experience in microtunneling, mechanical systems, sewage treatment, and a broad range of other capabilities.

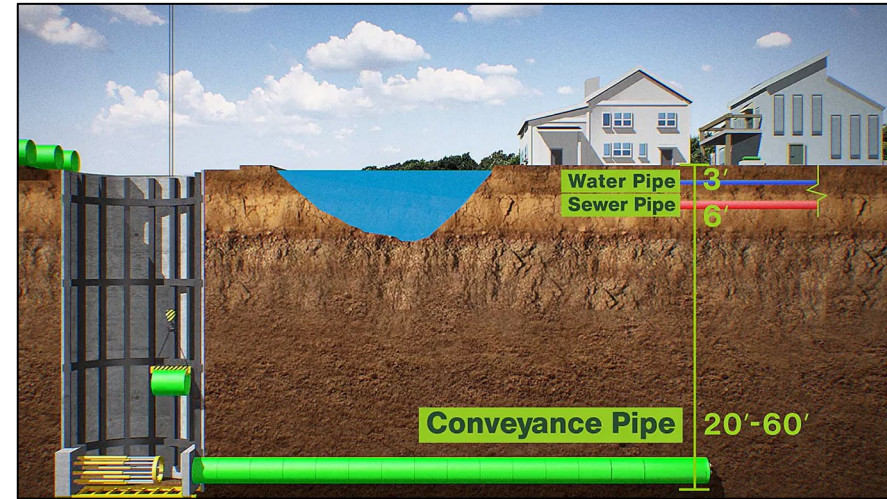
John P. Picone	Northeast Remsko	McMillen Jacobs Associates	Greeley and Hansen
<p>Lead Contractor on Water / Wastewater Projects</p>	<p>Specialized in Microtunneling</p>	<p>Industry Leader Underground Projects</p>	<p>Experts in Hydraulics</p>
			
<p>Safety Professionalism Integrity</p>	<p>Reputation Work Ethic Team Accomplishment</p>	<p>Design with Vision Build with Integrity</p>	<p>Great people working in partnership with exceptional clients to deliver first class infrastructure programs</p>

Project Design

- Design-Build approach allows for:
 - Reduced community impacts
 - Shorter construction duration
 - Ability to reprioritize project activities
- Engineering for a 100-year design life
- Temporary inconveniences to facilitate a greater goal

Microtunneling Technique

- Excavate deep into the ground to avoid water table and existing facilities
- Microtunnel Boring Machine (MTBM) and hydraulic jacks are used to push new pipe into place
 - No trenching necessary
 - Work is confined to shaft site
 - No activity in roadway



Microtunneling Technique

- Microtunneling shaft depth:
 - 39 – 62 feet deep along Bay Park alignment
 - 26 – 40 feet deep along Cedar Creek alignment
- Shafts will be approximately 24-26 feet in diameter
- Size of each work site around the shaft will vary based on location

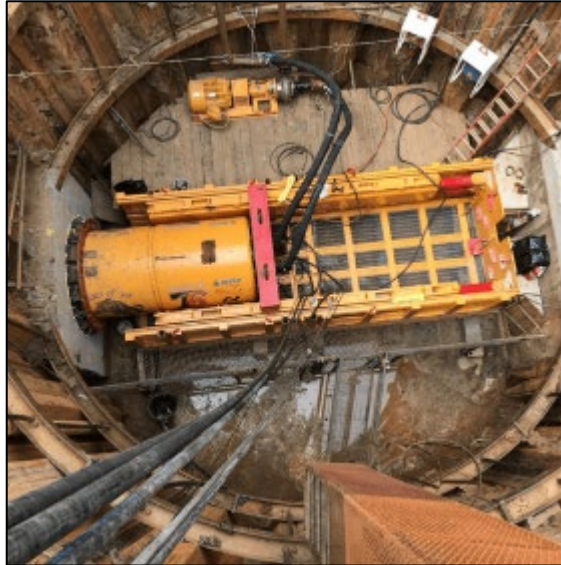


Illustrative Graphic of Bay Park Shaft 3

Microtunneling Technique



Microtunnel Boring Machine



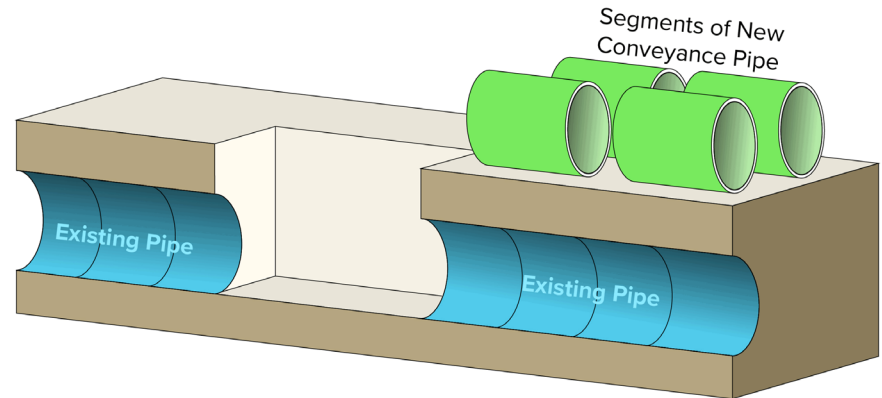
Microtunneling shaft



Microtunnel Boring Machine

Sliplining Technique

- Excavate to the existing aqueduct level (approximately 15-18 feet deep)
- Place hydraulic jacking machine at base of pit
- Slide new conveyance pipe into existing aqueduct using hydraulic jacks
 - No open trenching necessary
 - Work is confined to pit site



Sliplining Technique

- Pits needed along Sunrise Highway to access the existing aqueduct
- Sunrise Highway Aqueduct pits will be approximately:
 - 22-51 feet L x 13 feet W x 15-18 feet D
- Size of each work site around the pit will vary based on location and can extend up to 200 feet in length
- Repurposing abandoned infrastructure avoids the need for more invasive construction



Sliplining Pipe and Pit

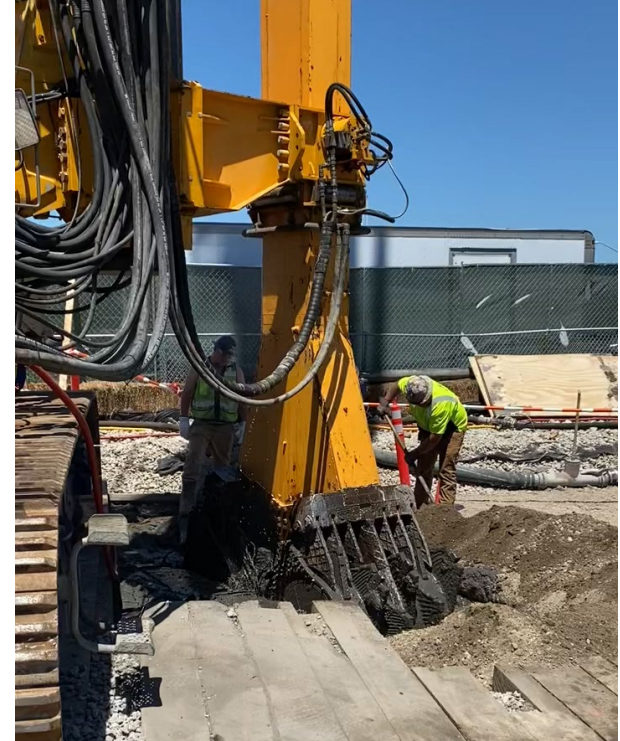
Minimizing Construction Impacts



Illustrative Graphic of WZTC along Sunrise Highway

Support of Excavation (SOE)

- SOE is used to support the earth during excavation
- Cutter Soil Mix (CSM) and Secant Piles are used to support microtunneling shafts
- Sheet piles and soldier piles will be used to support sliplining pits on Sunrise Highway

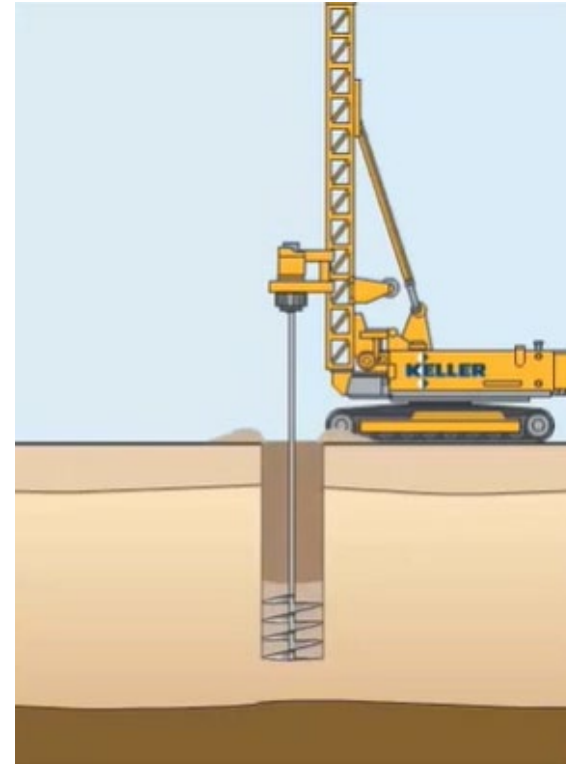


*Cutter Soil Mixing at BP 2
Credit: WBC*

Support of Excavation (SOE)



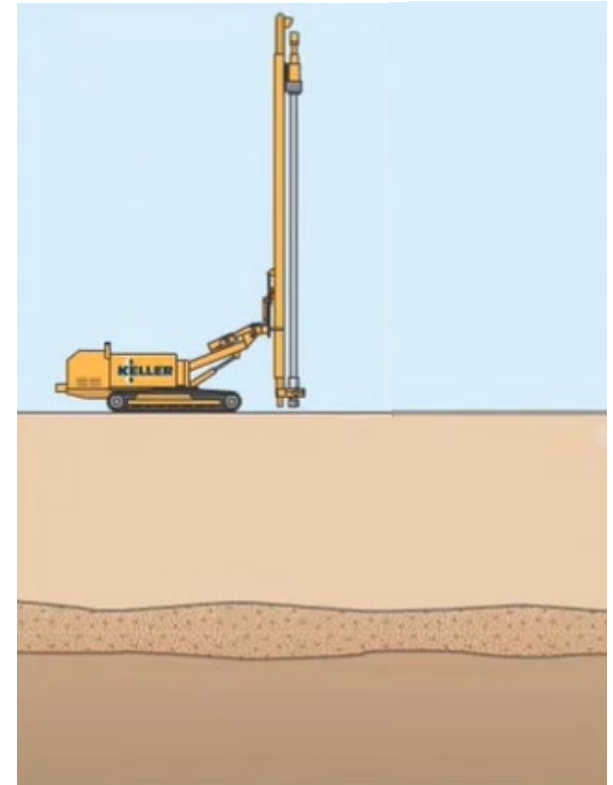
Animation of Sheet Pile Installation
Credit: Keller North America



Animation of Secant Pile Installation
Credit: Keller North America

Jet Grout

- Jet grout is a technique used to prevent water from entering the bottom of a microtunneling shaft
- A mix of grouted soil is forced into the ground using high velocity jets
- Effective across the widest range of soil types
- Primarily used in microtunneling shafts

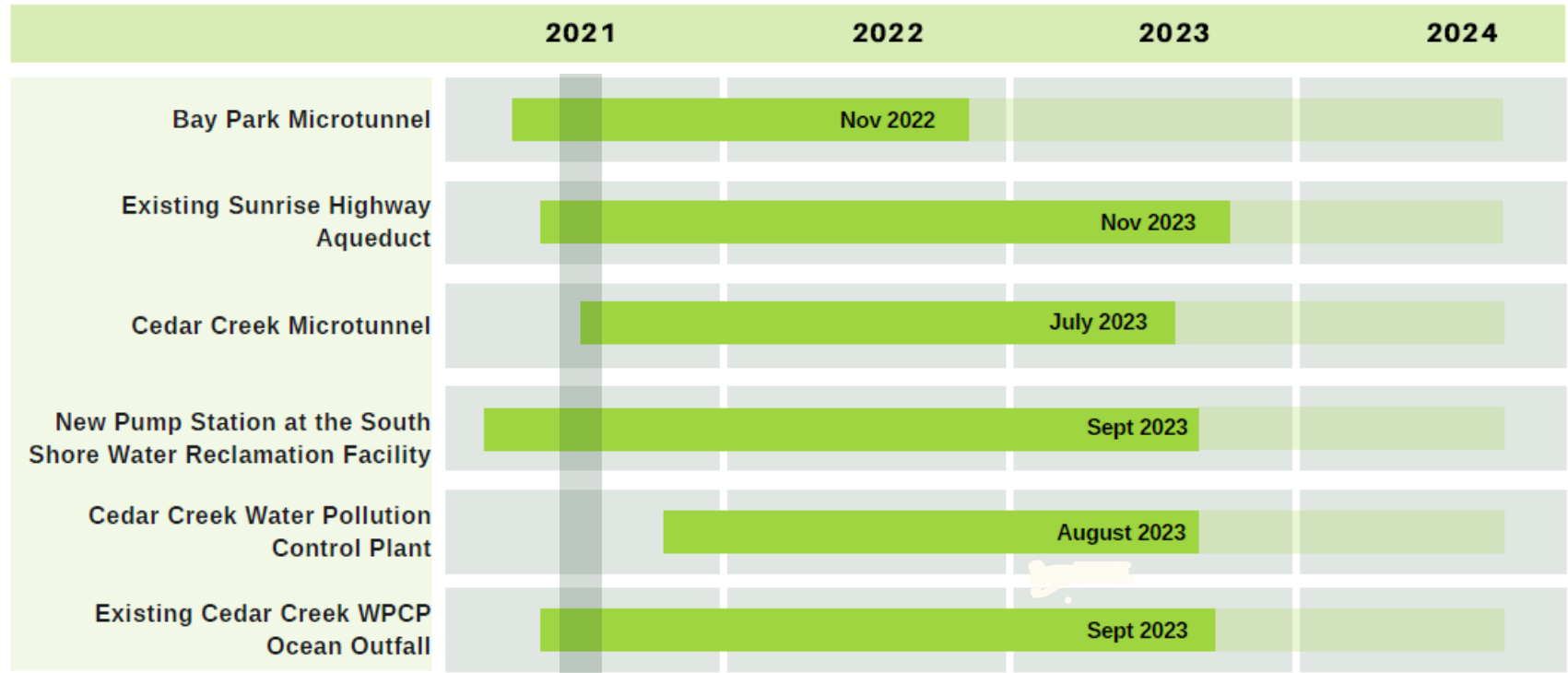


*Animation of Jet Grout Installation
Credit: Keller North America*



3. Construction Look Ahead

Project Timeline



We Are Here

Final Acceptance Aug 2024

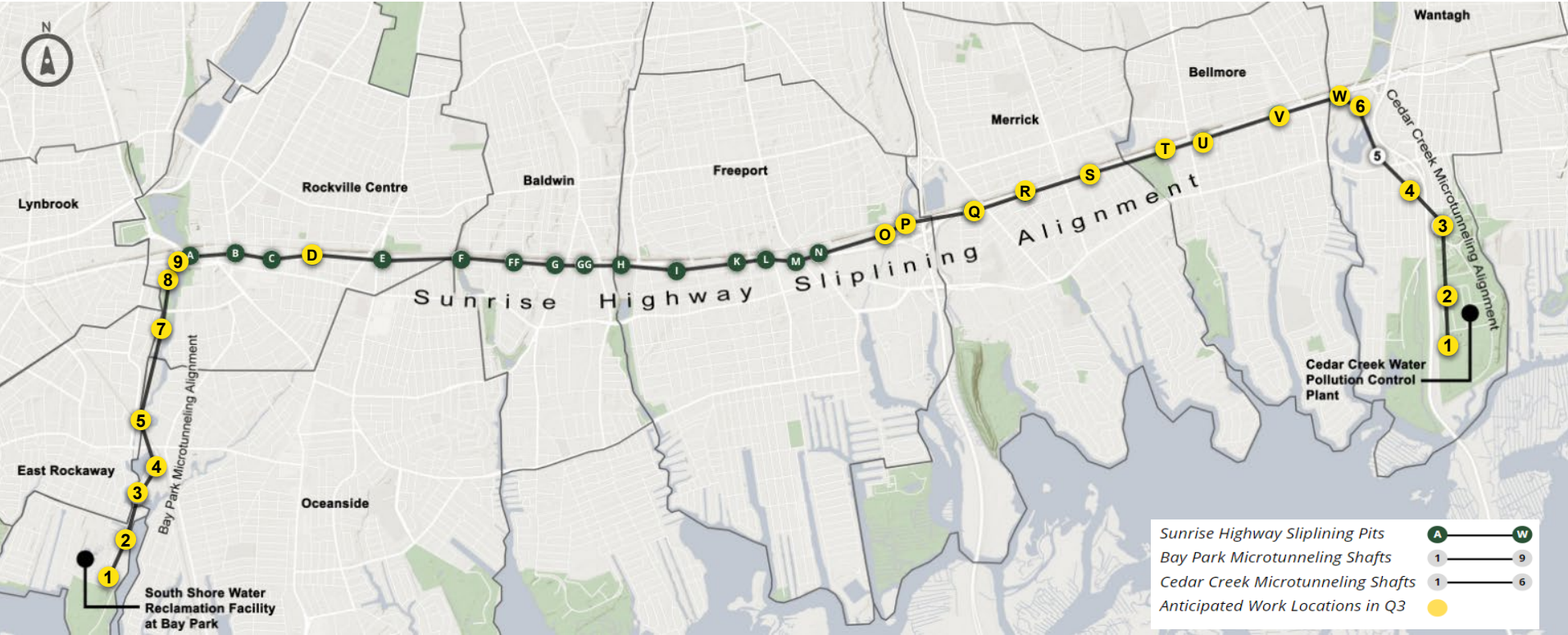
Upcoming Construction Activities at a Glance

Construction Activity	Municipality	Status
Bay Park Effluent Pump Station	Bay Park	In Progress
Bay Park Shaft 1	Bay Park	In Progress
Bay Park Shaft 2	Bay Park	In Progress
Bay Park Shaft 3	Oceanside	Summer 2021
Bay Park Shaft 4	Oceanside	Summer 2021
Bay Park Shaft 5	East Rockaway	In Progress
Bay Park Shaft 7	Rockville Centre	In Progress
Bay Park Shaft 8	Rockville Centre	In Progress
Bay Park Shaft 9	Rockville Centre	Summer 2021
Cedar Creek Shaft 1	Wantagh	In Progress
Cedar Creek Shaft 2	Wantagh	In Progress
Cedar Creek Shaft 3	Wantagh	In Progress

Upcoming Construction Activities at a Glance

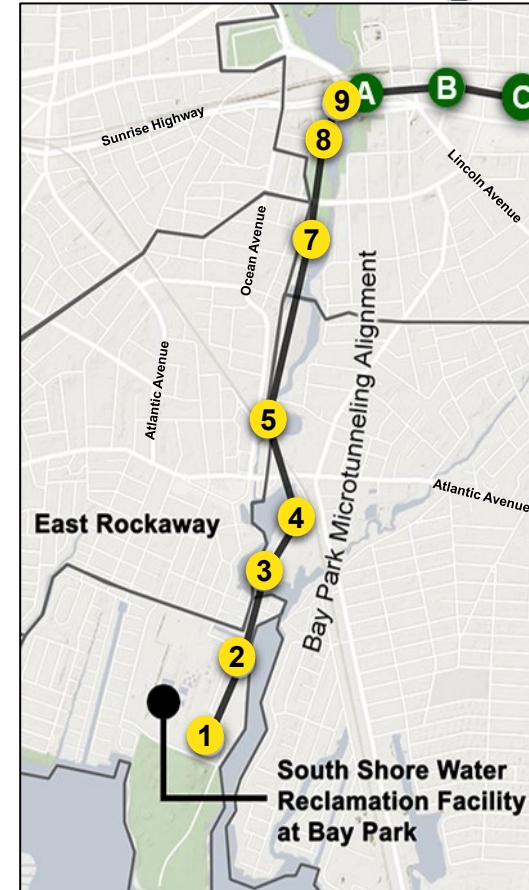
Construction Activity	Municipality	Status
Cedar Creek Shaft 4	Wantagh	Fall 2021
Cedar Creek Shaft 6	Wantagh	Fall 2021
Sunrise Highway Pit O	Freeport	In Progress
Sunrise Highway Pit P	Freeport	In Progress
Sunrise Highway Pit Q	Merrick	In Progress
Sunrise Highway Pit R	Merrick	In Progress
Sunrise Highway Pit S	Merrick	In Progress
Sunrise Highway Pit T	Bellmore	In Progress
Sunrise Highway Pit U	Bellmore	In Progress
Sunrise Highway Pit V	Bellmore	In Progress
Sunrise Highway Pit W	Bellmore	In Progress

Upcoming Construction Activities 3Q 2021



Bay Park Microtunneling

- Shafts 1, 2 - SOE installation to be completed, MTBM to mobilize to Shaft 2 in September 2021
 - Shafts 3, 8 - CSM SOE installation to begin August 2021
 - Shafts 4, 5, 7 - Site fencing and preparation continuing through the summer
 - Shafts 9 - Site preparation anticipated for September 2021
- ✓ Sites will be fenced and secured
 - ✓ Trucks will transport materials to and from shaft sites
 - ✓ Instrumentation installed on-site. Will continue monitoring for vibrations and settlement



Sunrise Highway Sliplining

- Nighttime work from Pit Q - W (Meadowbrook Pkwy to Wantagh State Pkwy)
 - Conducting test pits, surveying & examining the aqueduct to prepare for sliplining
- Pits O, P & Q - Sliplining anticipated to begin in August 2021
 - SOE Installation to precede sliplining operations
- Pit D - Material storage at will continue throughout the Project



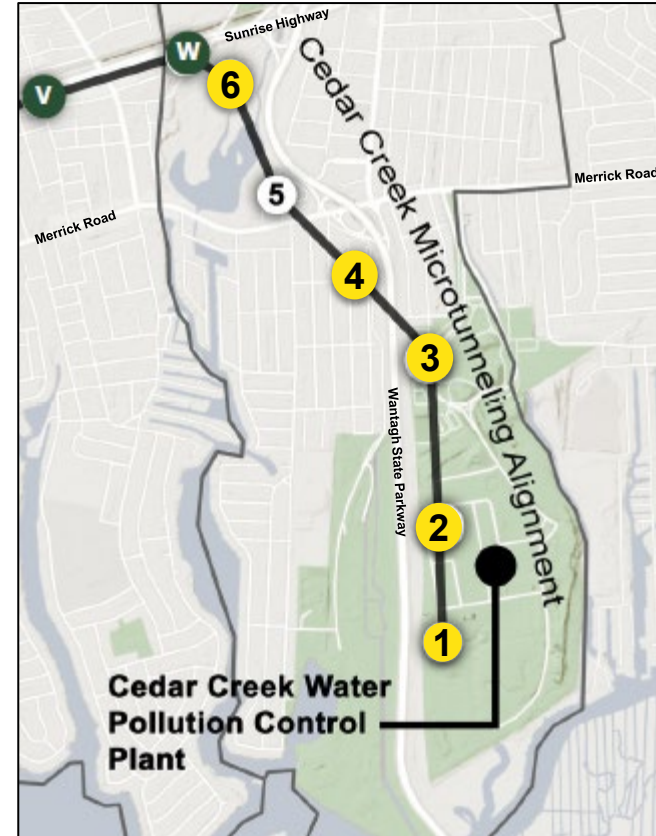
Addressing Sunrise Highway Construction Impacts

- WBC is committed to maintaining three lanes of traffic along Sunrise Highway from 6 a.m. – 9 a.m. and 3 p.m. – 9 p.m.
- Work Zone Traffic Control (WZTC) and Maintenance and Protection of Traffic (MPT) Signage will be in place to assist motorists and pedestrians around lane closures
- Variable Message Signage (VMS) boards will be in place in advance of lane closures



Cedar Creek Microtunneling

- Shaft 1 - Utility relocation to occur followed by excavation
 - Shaft 2, 3 - Utility relocation and guidewall construction
 - Shaft 4 - Clearing and grubbing anticipated to begin October 2021
 - Shaft 6 - Additional utility test pits needed
- ✓ Sites will be fenced and secured
 - ✓ Trucks will transport materials to and from shaft sites
 - ✓ Instrumentation installed on-site. Will continue monitoring for vibrations and settlement



Spotlight on Safety & Construction Site Tidiness



- All work pits and shafts will be enclosed and protected with fencing, inaccessible to the public
- Following all OSHA guidelines
- Community Air Monitoring Program (CAMP) active during construction
- Monitoring for air quality, dust and vibrations
- Quality control team will be present during each operation



4. Public & Stakeholder Outreach

WBC's Dedicated Community Outreach Team



Travis Brennan
Project Information Officer



Ginger Conforti
Outreach Manager



Margo Cargill
Community Ambassador



Gary Lewi
Senior Consultant

Community Outreach Program

- Held 16 virtual meetings since NTP
- Conduct “Before You Go” Facebook Campaign
- Serves as stakeholder’s direct point of contact
- Conduct door-to-door canvassing
- Respond to 24/7 hotline and email inquiries
- Issue construction lookaheads, e-blasts, and e-newsletters
- Provide regular meetings with project stakeholders
- Maintain access to existing businesses
- Maintain project website and social media
- Distributed post card



Contact Us



24/7 Project Hotline
(516) 252-6121



Community Information Center
265 Sunrise Highway
Rockville Centre, New York, 11570
**Currently open by appointment only*



Email
BayParkConveyance@gmail.com



Facebook
@BayParkConveyance



Website
www.BayParkConveyance.org



5. Question and Answer Session

Speaker Instructions



Use the raise hand feature to indicate you have a comment.
If you are joining by phone, press *9 to raise your hand.



When called upon, a member of the Project Team will unmute your audio.
You will then have to unmute yourself.
If you are joining by phone, press *6 to unmute yourself.



State and spell your name and affiliation (e.g. resident, press, etc.) prior to providing your comment. Please limit your comments to three minutes.

Speaker Instructions



Use the raise hand feature to indicate you have a comment.
If you are joining by phone, press *9 to raise your hand.



When called upon, a member of the Project Team will unmute your audio.
You will then have to unmute yourself.
If you are joining by phone, press *6 to unmute yourself.



State and spell your name and affiliation (e.g. resident, press, etc.) prior to providing your comment. Please limit your comments to three minutes.



Thank You!