

Welcome to

The Bay Park Conveyance Project

M/WBE / SDVOB

Information and Opportunity Session

January 26, 2021



Department of
Environmental
Conservation



Logistics

Virtual Meeting Format

1



**Members of the
public join via URL,
Zoom Meeting ID,
or Phone**

2



**Project
Presentation**

3



**Live Question &
Answer Session**

When Getting Ready to Ask a Question:

- Use the raise hand feature to indicate you have a question OR enter your question using the Q&A feature at the bottom of the screen.
- When called upon during the live Q&A, a member of the Project Team will unmute your audio. You will then have to unmute yourself.
- State your name and affiliation prior to asking your question.

Agenda

- 1 Project Background**
- 2 The Design-Build Process**
- 3 Western Bays Constructors**
- 4 Get Involved**
- 5 Q&A Session**



1. Project Background

Overview: The Bay Park Conveyance Project

The Project will convey treated water from the Bay Park Sewage Treatment Plant to the Cedar Creek Water Pollution Control Plant ocean outfall in Nassau County, Long Island



Project Background: 2020 Bay Park Agreement



**Department of
Environmental
Conservation**

**In partnership
with**



The goal of the 2020 Bay Park Agreement is to meet the water quality standards contained in the Bay Park Sewage Treatment Plant's State Pollutant Discharge Elimination System (SPDES) permit.

The Western Bays

The Problem

Water flow paths in Reynolds Channel are limited and the turnover of water in the channel to the Atlantic Ocean is slow. This results in the build up and accumulation of nitrogen in the Western Bays waters.



Alternatives Considered

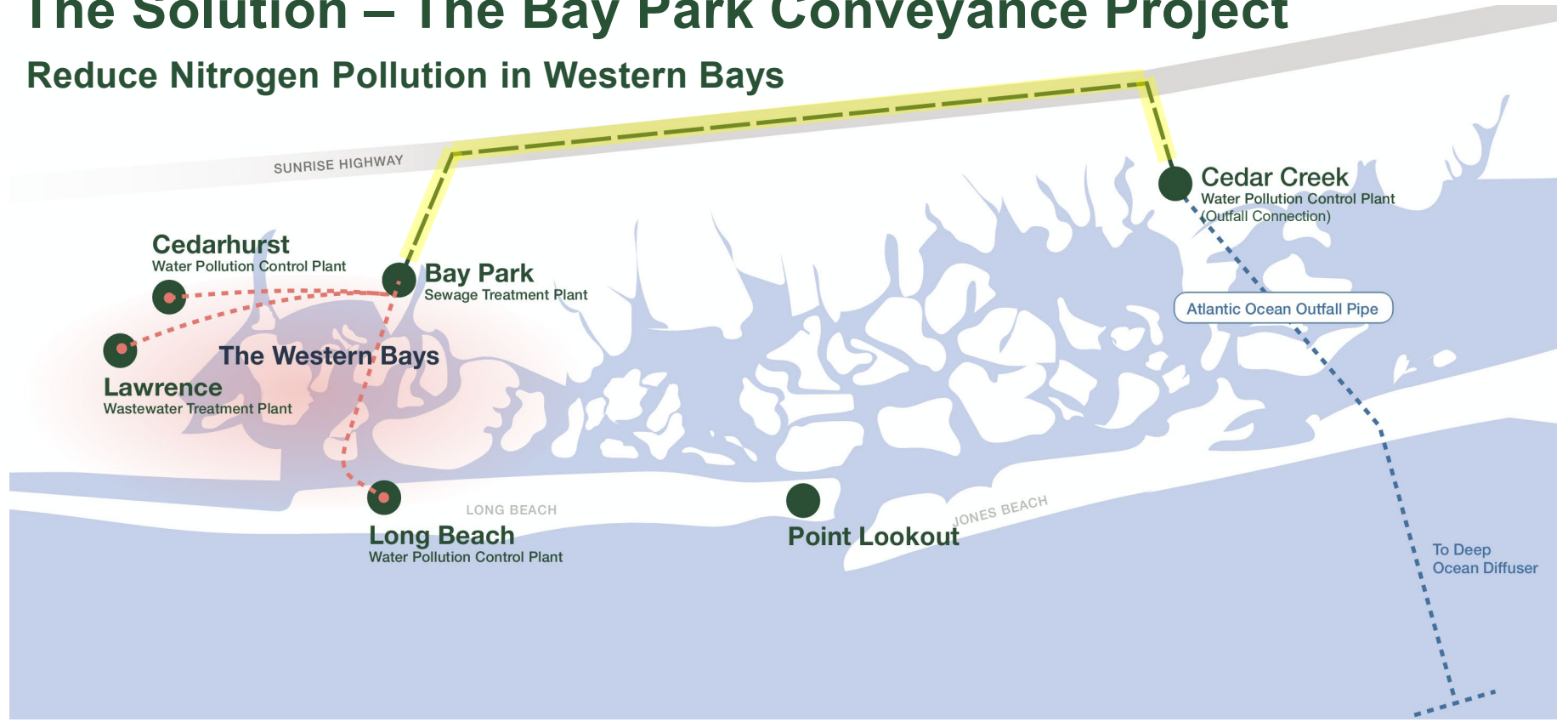
1. The Bay Park Conveyance Project
2. Bay Park Atlantic Ocean Outfall
3. Tertiary treatment

The Bay Park Conveyance Project was found to be the most cost-effective solution that could be implemented on a more expedited timeline.



The Solution – The Bay Park Conveyance Project

Reduce Nitrogen Pollution in Western Bays




Project Goals

- Revitalizing and repurposing existing infrastructure (Sunrise Highway Aqueduct)
- Consolidating wastewater treatment services to divert flows from Reynolds Channel (Western Bays)
- Removing nearly all of nitrogen loads (from Bay Park STP) from the Western Bays
- Rejuvenating marshlands and wetlands that provide storm attenuation



Top & bottom photos: Existing marshland conditions
(source: NC press office)



The Bay Park Conveyance Project

Project Overview

Project Elements

- Starting Point: Existing Bay Park Sewage Treatment Plant
- New Force Main:
 - Segment 1: Bay Park to Sunrise Highway Microtunnel
 - Segment 2: Sunrise Highway Aqueduct
 - Segment 3: Sunrise Highway to Cedar Creek Microtunnel
- Cedar Creek Water Pollution Control Plant (WPCP)
- Discharge Point: Existing Cedar Creek WPCP Ocean Outfall

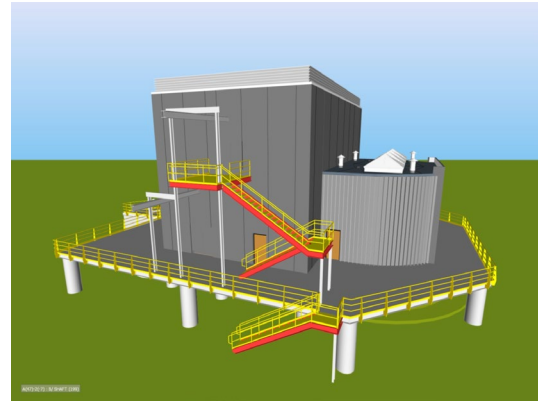
Starting Point: Bay Park Sewage Treatment Plant



Force Main Segment 1 - Bay Park to Sunrise Highway Microtunnel

Main Project Element

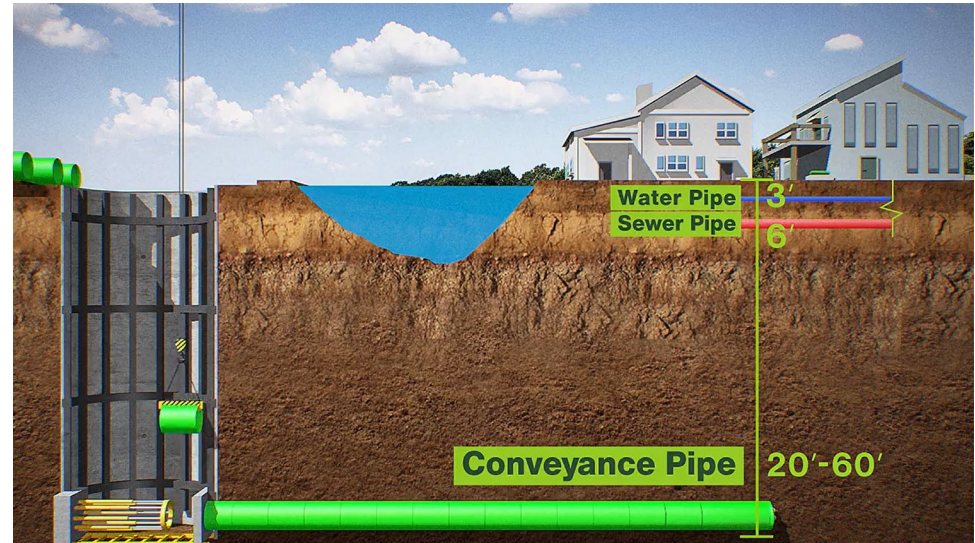
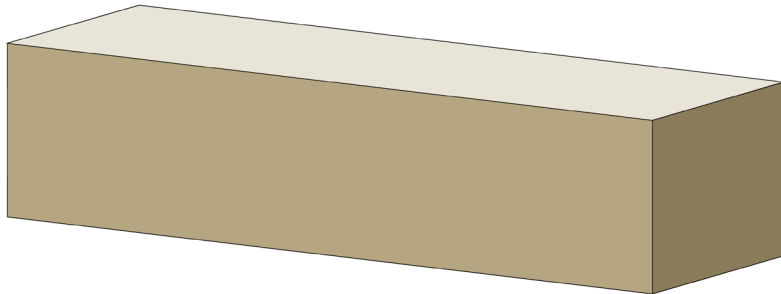
- At Bay Park – Construction of a new pump station
- Bay Park to Sunrise Highway – 2-mile force main via microtunneling



Innovative Approach

Innovative Technology to Minimize Disruption

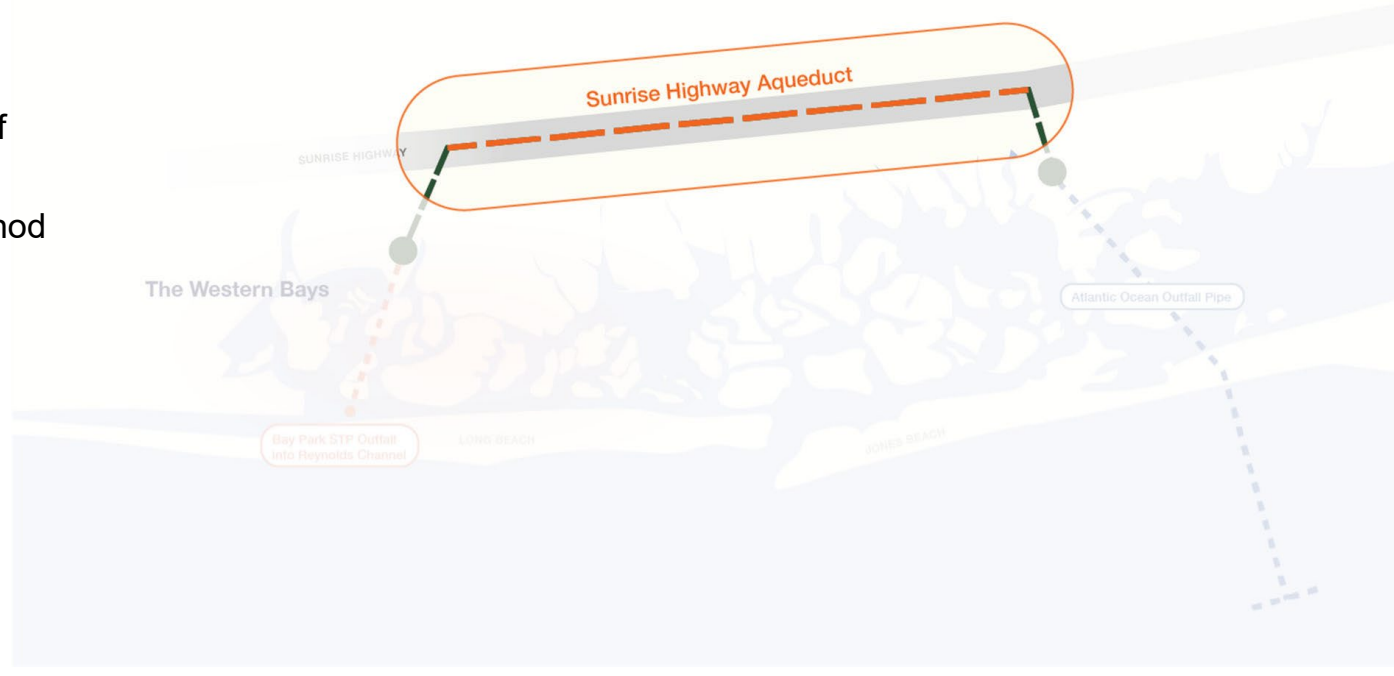
Microtunneling



Force Main Segment 2 - Sunrise Highway Aqueduct

Main Project Element

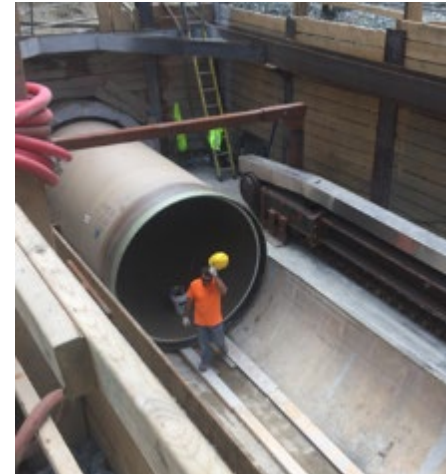
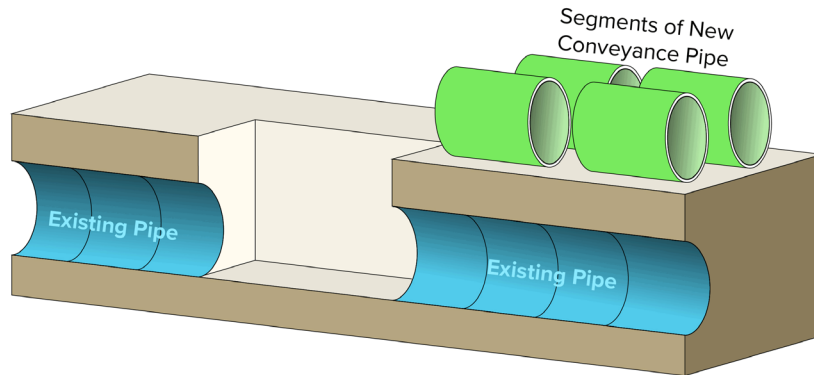
- Sunrise Highway – Repurposing 7.3-miles of the existing aqueduct
- Innovative sliplining method to minimize disruption



Innovative Approach

Innovative Technology to Minimize Disruption

Sliplining

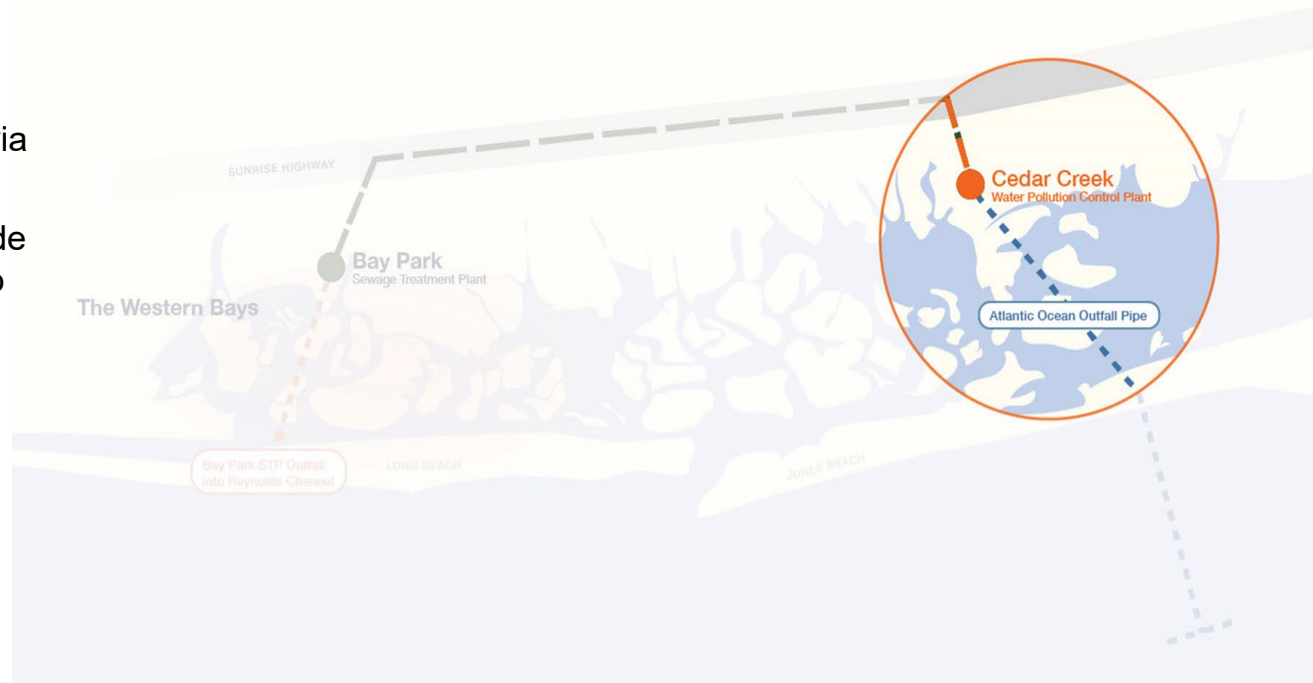


Sliplining

Force Main Segment 3 - Sunrise Highway to Cedar Creek Microtunnel

Main Project Element

- Sunrise Highway to Cedar Creek – 1.6-mile force main via microtunneling
- At Cedar Creek – Upgrade tide pumps, connect force main to ocean outfall



Cedar Creek Water Pollution Control Plant

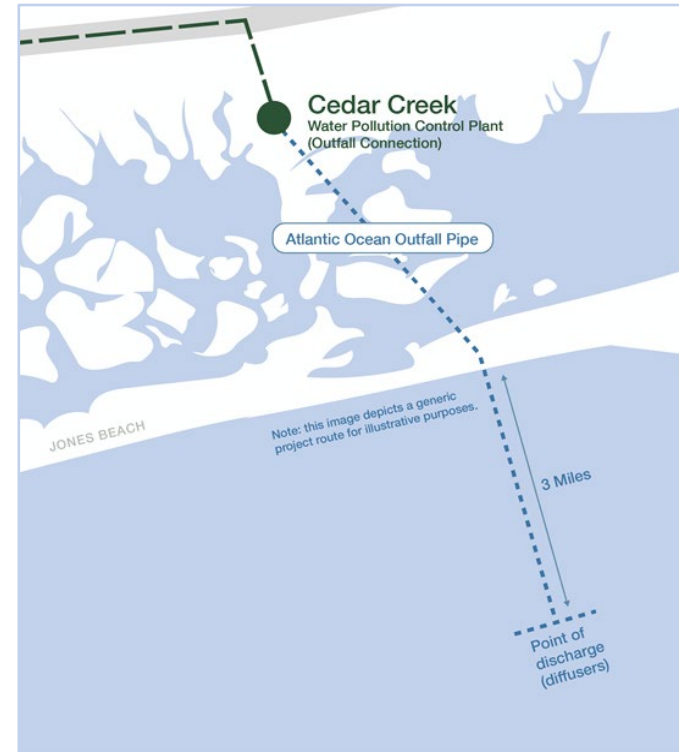
- Replace 5 existing outfall pumps to pump up to 150 MGD of treated effluent
- A receiving connection at the Cedar Creek WPCP with connection to the existing 84-inch ocean outfall, downstream of the effluent pump building
- Connect new pipe (wet tapping) into existing outfall conduit



Cedar Creek, existing tide pumps

Discharge Point: Existing Cedar Creek WPCP Ocean Outfall

- Treated water will travel 7 miles from Cedar Creek WPCP to the existing ocean outfall (approximately 3 miles offshore)
- Existing ocean outfall pipe has 120 diffuser ports over the span of a mile
- Due to the Cedar Creek outfall location and diffusers, the treated discharge disperses quickly into the surrounding ocean water





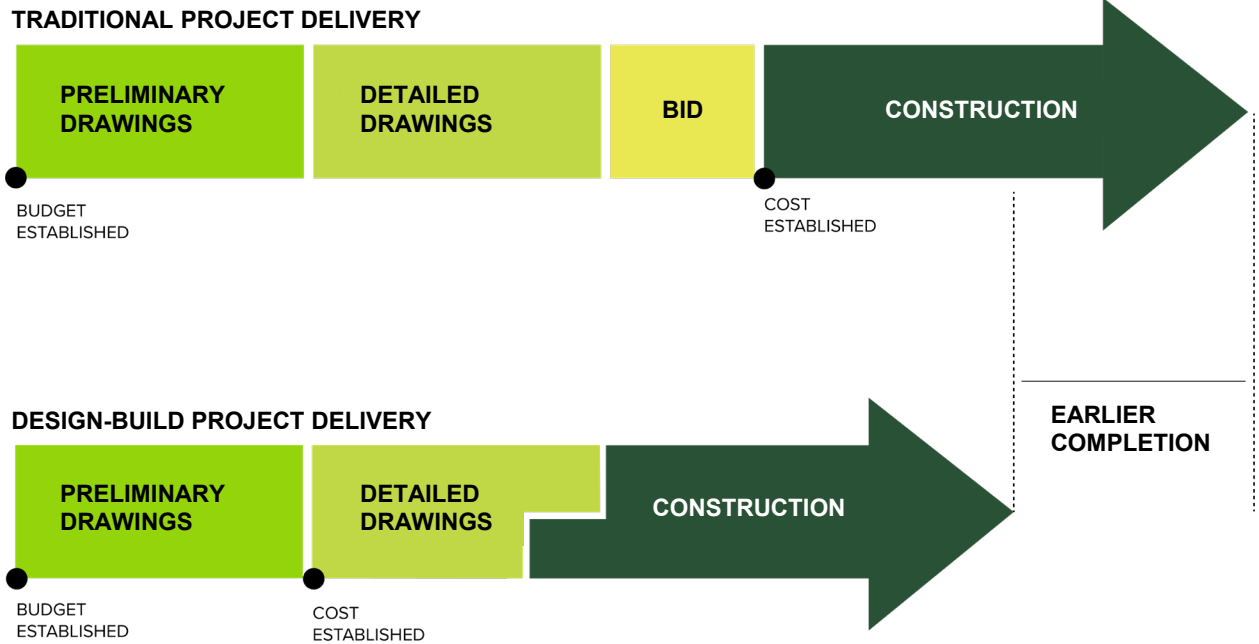
2. The Design-Build Process

What is Design-Build?

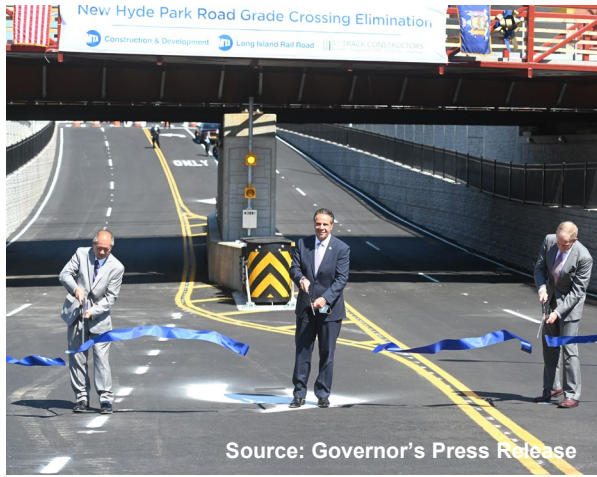
- Governor Cuomo recognized Design-Build as the fastest, most cost-efficient manner to build this Project
- Design-Build is a project delivery method used to design and construct a project using just one contract
- Design-Build teams consist of a design engineering firm or firms and a contractor or multiple contractors
- There are several kinds of Design-Build procurements:
 - DEC is using the Fixed Price, Best Value Method pursuant to the New York State Infrastructure Investment Act

Benefits of Design Build

- Accelerate Project Implementation and Completion
- Ensures use of qualified engineers and contractors
- Ensures the selected Design-Build Designer designs and builds what the County needs



Design-Build Projects in NYS



Source: Governor's Press Release

LIRR Expansion Project from Floral Park to Hicksville



Source: Javits Center Twitter

Jacob K. Javits Convention Center Expansion



Source: NYS Thruway Authority

Governor Mario M. Cuomo Bridge

Design-Builder Selection

NOVEMBER 6, 2020 | Albany, NY

**Governor Cuomo Announces Selection of Western
Bays Constructors Joint Venture as Design-Build
Team to Construct Bay Park Conveyance Project**



3. Western Bays Constructors

Design-Builder



WESTERN BAYS CONSTRUCTORS
PICONE | NORTHEAST REMSCO



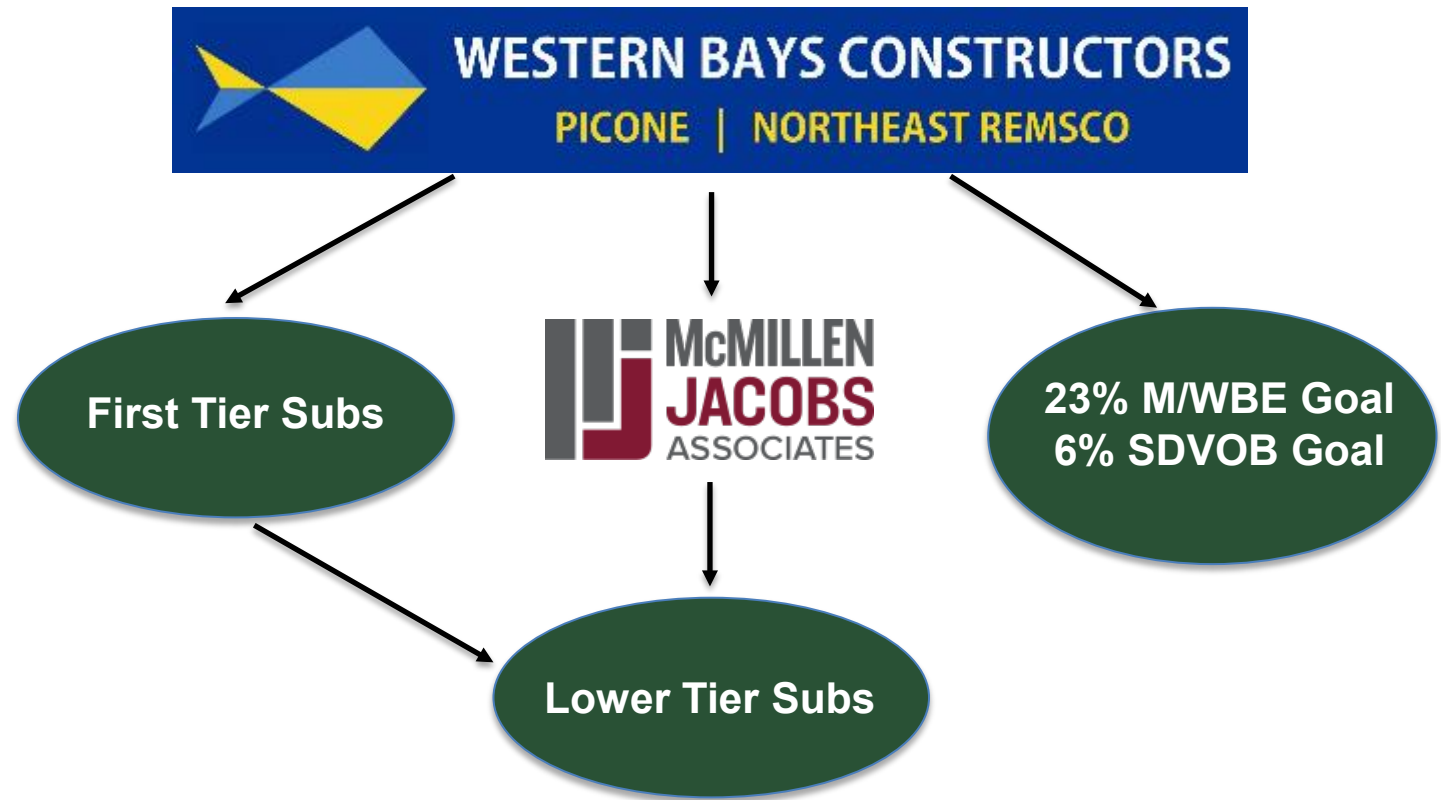
PICONE



Design Team



GREELEY AND HANSEN



WBC Experience

- Tallman Island Wastewater Treatment Plant
- Hunts Point Wastewater Treatment Plant
- Bowery Bay Wastewater Treatment Plant
- LIRR Expansion Project
- City Tunnel #3
- Newtown Creek
- Largest micro tunneling fleet on the East Coast
- Homestead Avenue
- Broad Creek Conveyance
- Canal Road
- Broad Creek WWPS

How to Become Certified

Becoming a MWBE:

NYS ESD MWBE Certification:

- Email: mwbecertification@esd.ny.gov
- Phone: (212) 803-2414

MWBE Program Information and Resources:

- <https://esd.ny.gov/doing-business-ny/mwbe>
- New York State Contract System: <https://ny.newnycontracts.com>

Becoming a SDVOB: <https://ogs.ny.gov/Veterans/>

Email: Veteransdevelopment@ogs.ny.gov

Phone: (518) 474-2015

What You Need to Know:

M/WBE:

Website:

- Empire State Development Division of Minority and Women's Business: <https://esd.ny.gov/>

Rules & Regulations:

- M/WBE participation in accordance with Article 15-A of the NY Executive Law and Chapter XIV, Parts 140 to 145 of Title 5 New York Codes, Rules and Regulations (NYCRR)

SDVOB:

Website:

- NYS Office of General Services: <https://ogs.ny.gov/Veterans/>

Rules & Regulations:

- SDVOB participation in accordance with Article 17-B of the NY Executive Law

Contact Us

Western Bays Constructors

Julianne Jarvis – MWBE-SDVOB Lead
WesternBaysConstructors.com
(516) 423-9365
Juliannejarvis@johnpicone.com

Empire State Development

Lourdes Martinez - Program Manager/Senior Business
Development Assoc.
Division of Minority and Women's Business Development
(212) 803-3250
Lourdes.Martinez@esd.ny.gov

Office of General Services

Kenneth Williams – Executive Director
Division of Service-Disabled Veterans' Business Development
(518) 474-2015
Kenneth.Williams@ogs.ny.gov

Nassau County Office of Minority Affairs

Lionel Chitty - Executive Director
Nassau County Office of Minority Affairs
(516) 572-2240 / 2243
LChitty@nassaucountyny.gov

Key Notes & Clarifications:

Owner: NYS DEC and Nassau County

23% M/WBE Participation Goal

6% SDVOB Participation Goal

Overview: MWBE and SDVOB Procedures

- M/WBE firms shall only bid for work that corresponds to their NAICS codes that they are certified for and listed on the NYS MWBE Directory
 - SDVOB firms shall only bid for work that corresponds to their NAICS codes that's listed on the NYS OGS Directory
 - Identify the scopes of service that includes work on the project for which you intend to bid
 - Specify items of work that are your *specialty*
 - Attendance at outreach events does not guarantee participation nor indicate preferential treatment of any firms
- * **NAICS Code – North American Industry Classification System Code**

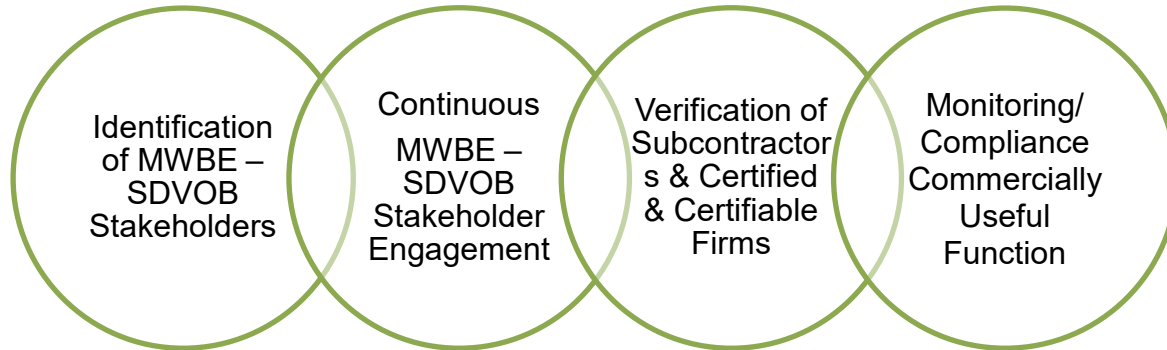
Opportunities

Identified scopes of work:

1. Rebar
2. Waterproofing
3. Electrical Services
4. Electrical Supplies
5. Special Inspections
6. Geotechnical Engineering
7. Misc. Testing
8. Misc. Metals
9. Paving
10. Instrumentation
11. Structural Steel
12. Landscaping
13. Stripping
14. Curb
15. Painting
16. Roofing
17. Pipe Insulation
18. Shotcrete
19. Masonry
20. Insulated Walls Panels
21. Joist/ Metal Deck
22. HVAC
23. Wet Tap
24. Pavement Milling
25. Fencing
27. Scaffolding
28. Signage
29. Communications and Outreach

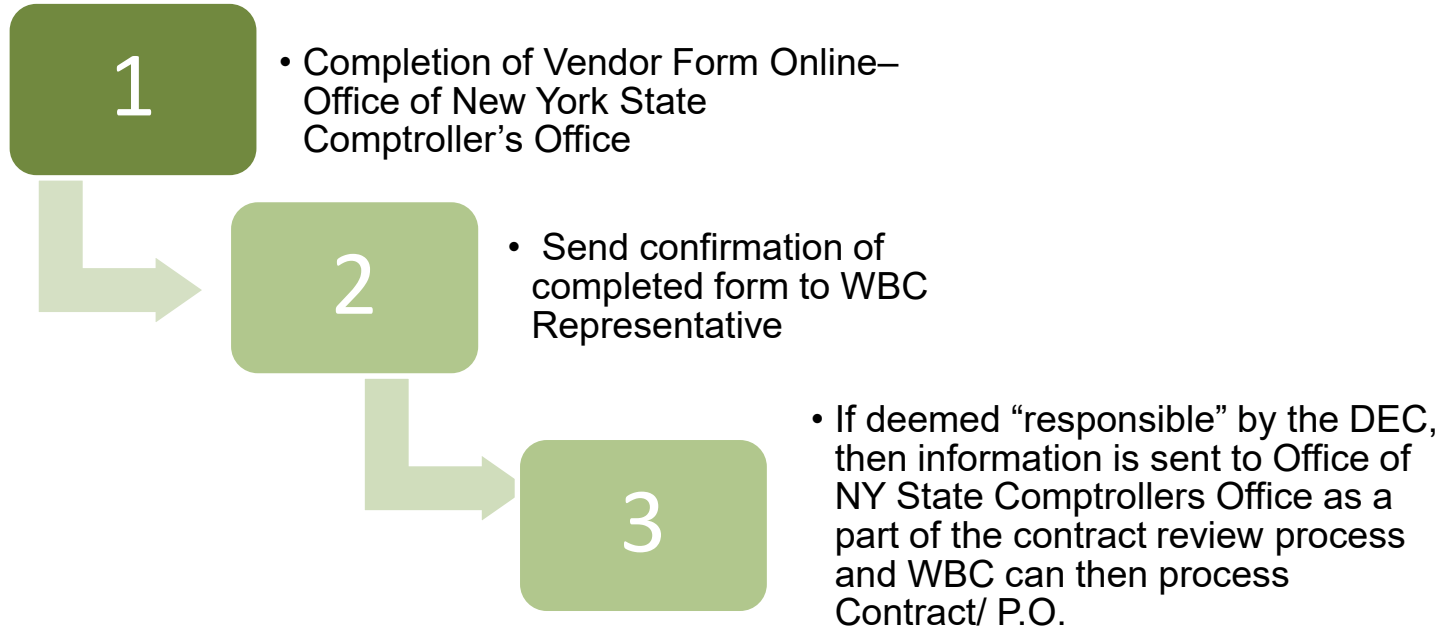
WBC'S Commitment

WBC will take all necessary and reasonable steps to ensure that MWBE & SDVOB firms have the maximum opportunity to participate in the performance of this Contract. Our efforts will be consistently documented. **MWBE-SDVOB engagement** is critical to project our success. Therefore, WBC is also committed to our interaction with our subcontractors in the following ways.



Requirements for Potential Subcontractors

Vendor Responsibility Questionnaire



Requirements for Potential Subcontractors

MWBE Process

Interested in becoming certified as an MWBE in New York State? We've got all of the information you need to get started, or stay up-to-date.

Are you Eligible?

Eligibility Requirements

Before you apply to become a NYS MWBE, make sure your business is eligible.

Your MWBE Application

All NYS MWBE Applications

Seeking to be certified or recertified, or been instructed to submit a new application? Get started here.

Update Your Profile

Vendor Profile Updates

All MWBE certified firms should review their vendor profile and make sure their information is accurate. Learn how here.

New York State Contract System

Already Certified?

Log in to the New York State Contract System to access your account.

Requirements for Potential Subcontractors

SDVOB Process

Step 1:	Step 2:	Step 3:	Step 4:
<p>Download and fill-out the Service-Disabled Veteran-Owned Business Certification Application</p>	<p>Print-out and sign the application</p>	<p>Gather all supporting documentation, as specified in the application.</p>	<p>Mail the application and supporting documents to the OGS Division of Service-Disabled Veterans' Business Development as specified in the Submission or Upload on to website. <i>*Maintain original signature copy.</i></p>

Strategic Partners



Thank you for your participation!



5. Question and Answer Session

Speaker Instructions



Use the raise hand feature to indicate you have a comment.
If you are joining by phone, press *9 to raise your hand.



When called upon, a member of the Project Team will unmute your audio.
You will then have to unmute yourself.
If you are joining by phone, press *6 to unmute yourself.



State and spell your name and affiliation (e.g. resident, press, etc.) prior to providing your comment. Please limit your comments to three minutes.



NEW
YORK
STATE

Department of
Environmental
Conservation



Thank You!
bayparkconveyance.org/contact-us