

SUNRISE HIGHWAY WORK PIT O - TREE PROTECTION AND REMOVAL PLAN

1"=20'0"



LEGEND

DESCRIPTION	SYMBOL
EXISTING TREE WITH TREE ID NUMBER	
TREE REMOVAL	
TEMPORARY PLASTIC BARRIER FENCE	
TEMPORARY TREE PROTECTION	

NOTE:

1. REFER TO DWG. NO. DET-L-101 FOR TREE INVENTORY AND TREE PROTECTION DETAILS.
2. SEE CIVIL DRAWINGS FOR ADDITIONAL INFORMATION.
3. CONSULTING ARBORIST SHALL VERIFY CHANGES TO TREE PROTECTION OR REMOVALS BASED ON EQUIPMENT ACCESS AND OPERATIONS.
4. (1) TREE REMOVED DUE TO SOE INSTALLATION



McMILLEN JA
ENGINEERING PLLC

B THAYER ASSOCIATES

RFCD SUBMITTAL

WINNER'S INITIAL	DATE
LNC	3/4/2022
DATE-INITIAL	DATE

THIS DRAWING SHALL NOT BE USED FOR CONSTRUCTION UNLESS THE DEPARTMENT'S RELEASED FOR CONSTRUCTION STAMP HAS BEEN APPLIED TO THE COVER OF THE CORRESPONDING DESIGN PACKAGE COVER SHEET AND THE DEPARTMENT HAS CHECKED AND DATED THE RFCD BOX ON THIS DRAWING

NO.	DATE	ISSUED FOR	BY



11-05-21

DATE:	NOVEMBER 2021
CONTRACT NO.:	D011883
FILE NAME:	511-SH-L-101
DESIGNED BY:	D. MAHER
DRAWN BY:	J. HINDS
CHECKED BY:	D. MAHER

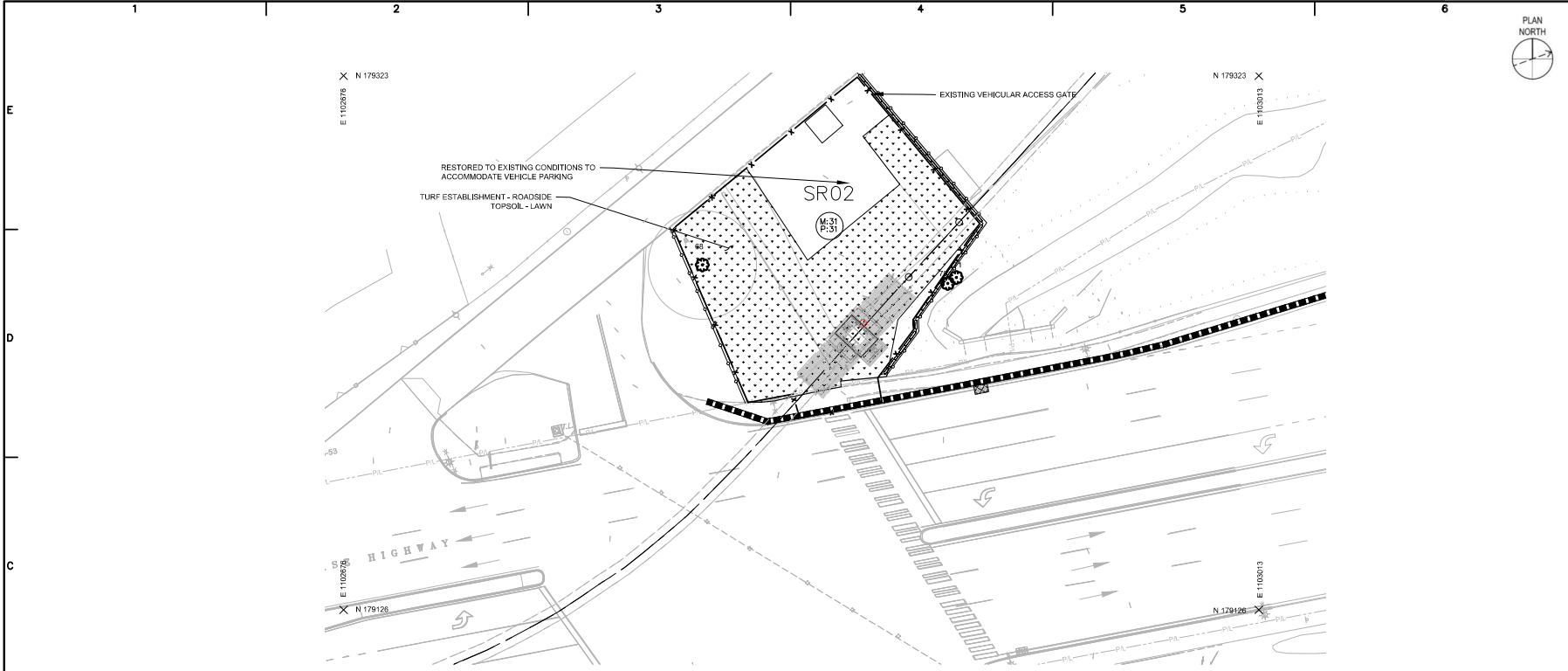


SHEET TITLE

DES PKG 17/PKG 511
**SUNRISE HIGHWAY
WORK PIT O
TREE PROTECTION AND
REMOVAL PLAN**

SCALE: AS SHOWN

SH-L-101
SHEET 88 OF 93



SUNRISE HIGHWAY WORK PIT O - LANDSCAPE RESTORATION PLAN
 1" = 20'-0"

LEGEND

DESCRIPTION	SYMBOL
PROPOSED TREE	
TURF ESTABLISHMENT - ROADSIDE TOPSOIL - LAWNS	

NOTES:

- REFER TO DWG. NO. DET-L-102 FOR LANDSCAPE RESTORATION DETAILS AND ADDITIONAL NOTES.
- PRIOR TO THE START OF CONSTRUCTION THE CONTRACTOR SHALL INSTALL ALL TREE PROTECTION IN ACCORDANCE WITH THE DETAILS PROVIDED. TREE PROTECTION SHALL REMAIN INTACT UNTIL RESTORATION IS COMPLETE.
- CONSTRUCTION OF TURF RESTORATION AREAS SHALL INCLUDE DECOMPACTION, FURNISHING AND INSTALLING TOPSOIL - LAWNS, FINISHED GRADING, HYDROSEEDING WITH TURF ESTABLISHMENT - ROADSIDE, MULCH, FERTILIZER, WATERING, MOWING AND MAINTENANCE.



RFCD SUBMITTAL	
OWNER'S INITIAL	DATE
DATE	3/4/2022
CONS. INITIAL	DATE
DATE	3/4/2022

THIS DRAWING SHALL NOT BE USED FOR CONSTRUCTION UNLESS THE DEPARTMENT'S RELEASED FOR CONSTRUCTION STAMP HAS BEEN APPLIED TO THE COVER OF THE CORRESPONDING DESIGN PACKAGE COVER SHEET AND THE DEPARTMENT HAS CHECKED AND DATED THE RFCD BOX ON THIS DRAWING

NO.	DATE	ISSUED FOR	BY



11-05-21

DATE:	NOVEMBER 2021
CONTRACT NO.:	D011883
FILE NAME:	S11-SH-L-102
DESIGNED BY:	D. MAHER
DRAWN BY:	J. HINDS
CHECKED BY:	D. MAHER



SHEET TITLE
 DES PKG 17/PKG 511
 SUNRISE HIGHWAY
 WORK PIT O
 LANDSCAPE RESTORATION
 PLAN

SCALE: AS SHOWN

SH-L-102
 SHEET 89 OF 93

