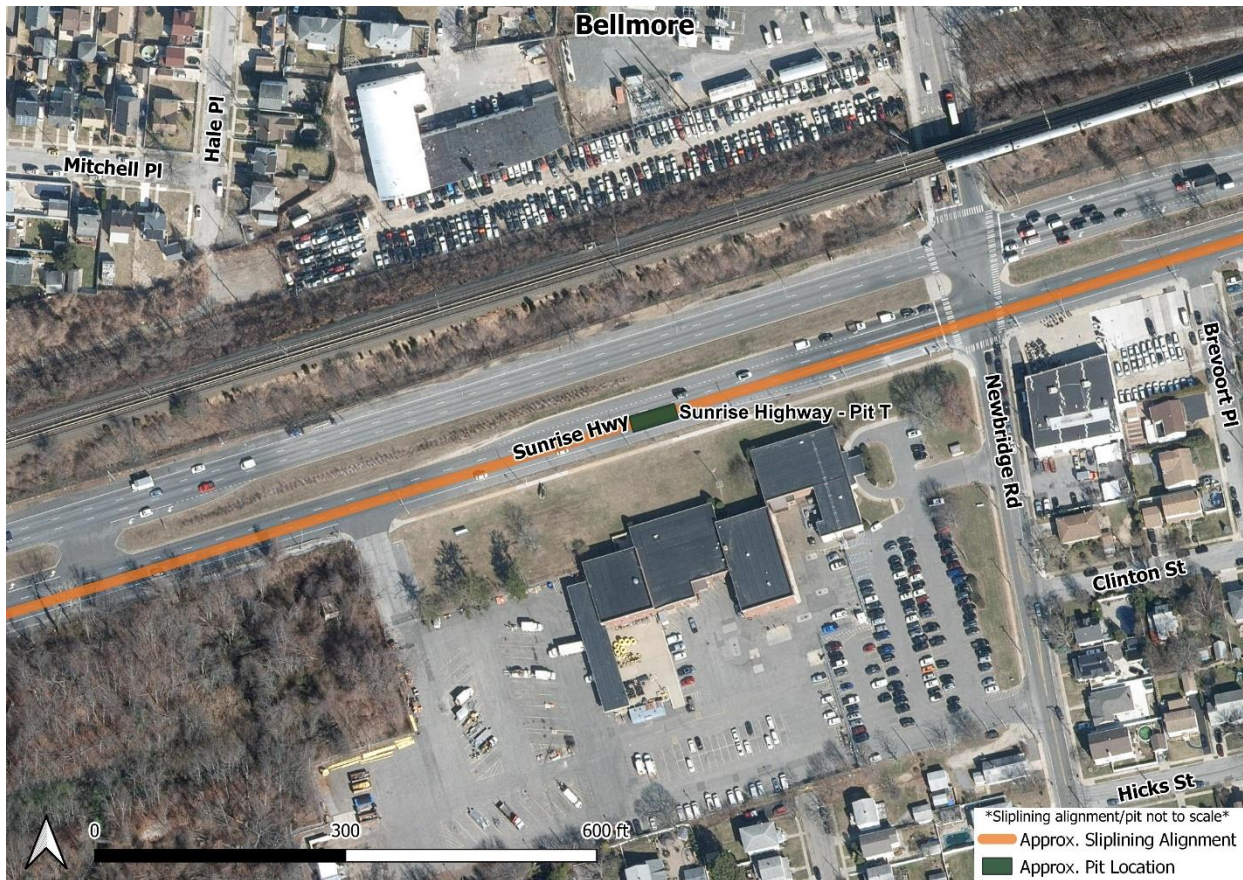


Dear Neighbor:

We are writing to update you on the construction of the Bay Park Conveyance Project. The Bay Park Conveyance Project is a partnership between the New York State Department of Environmental Conservation and the Nassau County Department of Public Works. Western Bays Constructors (WBC) is the design-builder for this innovative Project.

The Project will convey treated water from the South Shore Water Reclamation Facility at Bay Park (formerly known as the Bay Park Sewage Treatment Plant) to the existing Cedar Creek Water Pollution Control Plant's ocean outfall pipe, which discharges and diffuses treated water three miles offshore in the Atlantic Ocean. As part of this conveyance, the Project includes repurposing an existing aqueduct beneath Sunrise Highway, using a technique known as sliplining. Sliplining will occur within your community.



*Pit T location on Sunrise Highway*

Pit T is located on the south side of Sunrise Highway, just west of Newbridge Road in Merrick. As construction in your area continues, we want to give you as much information as possible. Here's

what you should know:

In preparation for the winter season, Western Bays Constructors (WBC) will begin to temporarily pave the pit located just west of Newbridge Road. No impact is expected to the community. In addition, as part of project completion, WBC will return to each pit location towards the end of next year to perform full depth restoration. During that time, we will continue to advise of all upcoming work.

Through a dedicated Community Outreach Program, WBC is committed to a robust engagement process and to maintaining an open line of communication throughout construction. We are also committed to minimizing disruption to neighborhoods near construction. WBC's Community Outreach Team will be available to answer questions and act as a project liaison throughout the duration of construction.

For more information on this project element, we encourage you to visit our website [www.BayParkConveyance.org](http://www.BayParkConveyance.org) and Facebook page [@BayParkConveyance](https://www.facebook.com/BayParkConveyance), and [register for email updates](#). Our Community Information Center is located at 265 Sunrise Highway in Rockville Centre; please visit our website for hours. You may contact us via the Project's 24/7 hotline at (516) 252-6121 or email us at [BayParkConveyance@gmail.com](mailto:BayParkConveyance@gmail.com) with any questions.

Respectfully,

**Margo K. Cargill**  
Community Ambassador

