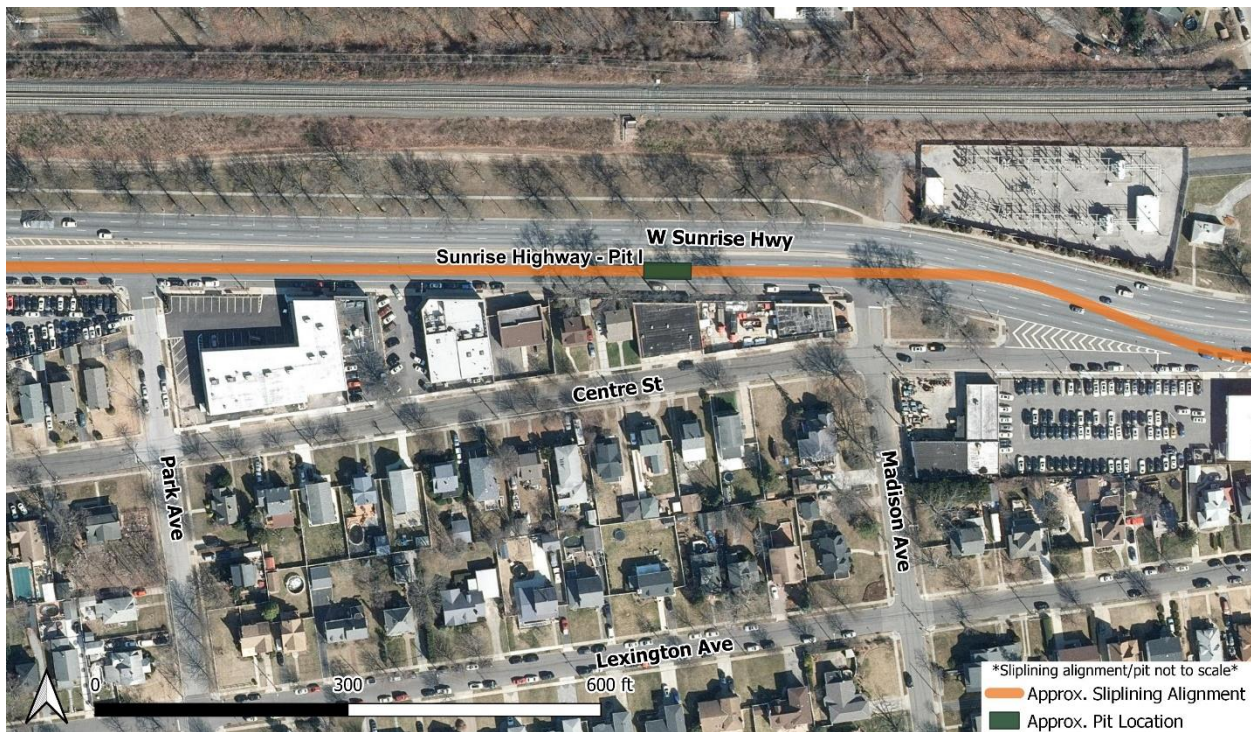


Dear Neighbor:

We are writing to update you on the construction of the Bay Park Conveyance Project. The Bay Park Conveyance Project is a partnership between the New York State Department of Environmental Conservation and the Nassau County Department of Public Works. Western Bays Constructors (WBC) is the design-builder for this innovative Project.

The Project will convey treated water from the South Shore Water Reclamation Facility at Bay Park (formerly known as the Bay Park Sewage Treatment Plant) to the existing Cedar Creek Water Pollution Control Plant's ocean outfall pipe, which discharges and diffuses treated water three miles offshore in the Atlantic Ocean. As part of this conveyance, the Project includes repurposing an existing aqueduct beneath Sunrise Highway, using a technique known as sliplining. Sliplining will occur within your community.



*Pit I location on Sunrise Highway*

Pit I is located on the south side of Sunrise Highway, just west of Madison Avenue in Freeport. As construction in your area continues, we want to give you as much information as possible. Here's what you should know:

In the coming days, crews will begin to install sheet piles at Pit I. Sheet piles will serve as retaining walls to support the earth and roadway during excavation of this sliplining pit. Installation of sheet

piles requires heavy machinery and can cause periods of noise and vibration in the areas directly adjacent to the work site. Following this activity, crews will perform sliplining by placing a hydraulic jacking machine at the base of Pit I to install the new conveyance pipe into the existing aqueduct.

Sheet pile installation and sliplining activities will take place overnight from approximately 9 p.m. to 6 a.m., Monday through Friday. During these hours, two eastbound lanes will be closed, and one eastbound lane will remain open between approximately Park Avenue and Madison Avenue. A comprehensive Maintenance and Protection of Traffic (MPT) plan is in place to protect the safety of drivers, pedestrians, and workers through the work zone and promote reliable traffic flow.

Through a dedicated Community Outreach Program, WBC is committed to a robust engagement process and to maintaining an open line of communication throughout construction. We are also committed to minimizing disruption to neighborhoods near construction. WBC's Community Outreach Team will be available to answer questions and act as a project liaison throughout the duration of construction.

For more information on this project element, we encourage you to visit our website [www.BayParkConveyance.org](http://www.BayParkConveyance.org) and Facebook page [@BayParkConveyance](https://www.facebook.com/BayParkConveyance), and [register for email updates](#). Our Community Information Center is located at 265 Sunrise Highway in Rockville Centre; please visit our website for hours. You may contact us via the Project's 24/7 hotline at (516) 252-6121 or email us at [BayParkConveyance@gmail.com](mailto:BayParkConveyance@gmail.com) with any questions.

Respectfully,

**Margo K. Cargill**  
Community Ambassador

