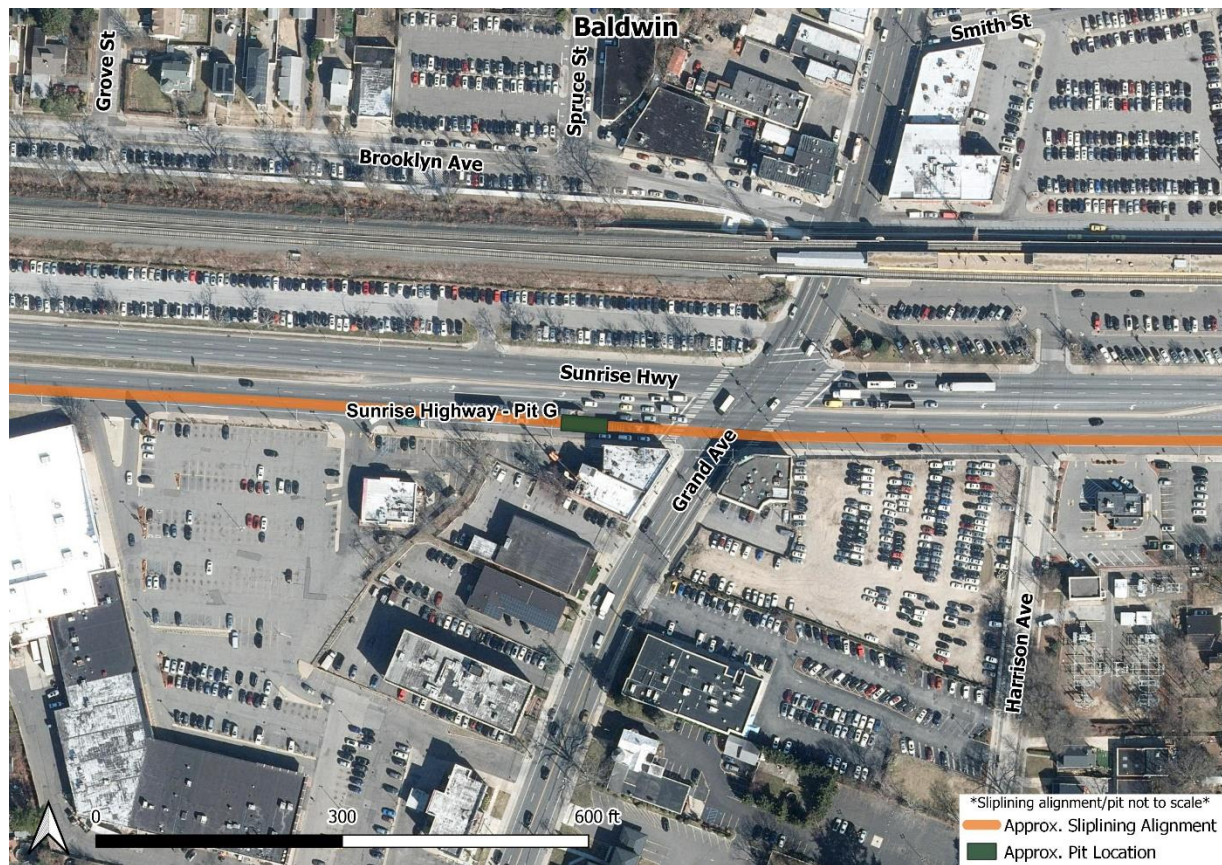


Dear Neighbor:

We are writing to update you on the construction of the Bay Park Conveyance Project. The Bay Park Conveyance Project is a partnership between the New York State Department of Environmental Conservation and the Nassau County Department of Public Works. Western Bays Constructors (WBC) is the design-builder for this innovative Project.

The Project will convey treated water from the South Shore Water Reclamation Facility at Bay Park (formerly known as the Bay Park Sewage Treatment Plant) to the existing Cedar Creek Water Pollution Control Plant's ocean outfall pipe, which discharges and diffuses treated water three miles offshore in the Atlantic Ocean. As part of this conveyance, the Project includes repurposing an existing aqueduct beneath Sunrise Highway, using a technique known as sliplining. Sliplining is now complete and WBC is working to restore Sunrise Highway in the areas where the roadway was disturbed to support construction.



*Pit G location on Sunrise Highway*

Pit G is located on the south side of Sunrise Highway just west of Grand Avenue in Baldwin. As construction in your area continues, we want to give you as much information as possible. Here's what you should know.



WBC completed sliplining and grouting of the newly installed conveyance pipe at Pit G. In the coming days, WBC will return to perform full depth roadway restoration at the pit.

Roadway restoration will take place overnight from approximately 9 p.m. to 6 a.m. for approximately two to three nights. During these hours, two eastbound lanes will be closed, and one eastbound lane will remain open between approximately Edna Court and Grand Avenue. A comprehensive Maintenance and Protection of Traffic (MPT) plan is in place to protect the safety of drivers, pedestrians, and workers near the work zone and promote reliable traffic flow. These activities may generate noise and vibrations.

At a later date, WBC will return to Pit G to perform final surface paving to conclude roadway restoration at this location.

For more information, you may contact us via the Project's 24/7 hotline at (516) 252-6121 or email us at [bayparkconveyance@gmail.com](mailto:bayparkconveyance@gmail.com) with any questions.

Respectfully,

**The Community Outreach Team**