

QUARTERLY NEWSLETTER

April 2024

The Bay Park Conveyance Project is a partnership between the New York State Department of Environmental Conservation (NYSDEC) and the Nassau County Department of Public Works (NCDPW). Together, NYSDEC and NCDPW are improving water quality and storm resiliency in Long Island's Western Bays by upgrading its wastewater management infrastructure. Western Bays Constructors (WBC) is the design-builder for this innovative Project.



KEY PROJECT MILESTONES

During the last quarter from January through March 2024, WBC continued construction and restoration activities along the Project corridor. Work progressed at the South Shore Water Reclamation Facility (WRF) and the Cedar Creek Water Pollution Control Plant (WPCP), constructing infrastructure to divert, pump and support the conveyance of treated water. Restoration planning progressed and tree replanting will begin this spring. Landscape restoration plans are available on the Project's website.

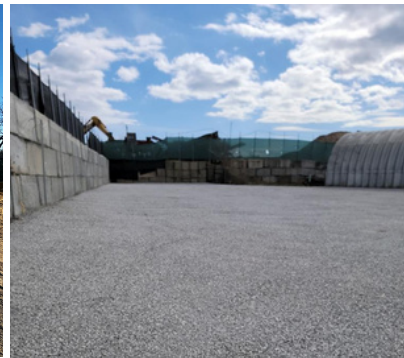
MICROTUNNELING



Cedar Creek Shaft 3



Regrading Activities at Bay Park Shaft 7



Full Site Restoration at Bay Park Shaft 3



Backfilling at Cedar Creek Shaft 2

In February, Governor Kathy Hochul announced the successful completion of microtunneling operations and the construction of nearly 11 miles of pipeline for the Project. During this quarter, microtunneling equipment was demobilized from Bay Park Shaft 8 and Cedar Creek Shaft 4 to prepare for site restoration. Crews proceeded with underground work within the pipeline in preparation for hydrostatic testing. Hydrostatic testing began at Bay Park Shaft 1 to Shaft 5 and Cedar Creek Shaft 1 to Shaft 3. Restoration activities were performed at Bay Park Shafts 2, 3, 4, and Cedar Creek Shaft 2. Landscape restoration plans for the shaft and pit sites where trees and vegetation were removed are on the [Project's website](#).

SUNRISE HIGHWAY




Bay Park Shaft 9 Pipe Delivery



Pit B on Sunrise Highway


With final roadway restoration nearly complete across Sunrise Highway, hydrostatic testing continued this quarter between Pits A and O to ensure the pipeline meets all project specifications. Preparations are underway to install a steel pipe connection between Bay Park Shaft 9 and Pit A. This will connect the microtunneled pipeline to the sliplined pipeline. At Pit W, crews installed a steel pipe connection between Pit W and Cedar Creek Shaft 6 and are preparing the shaft for hydrostatic testing.

 **24/7 Project Hotline**
(516) 252-6121

 **Email**
bayparkconveyance@gmail.com

 **Website**
www.bayparkconveyance.org

 **Facebook**
[@BayParkConveyance](https://www.facebook.com/BayParkConveyance)

 **Community Information Center**
265 Sunrise Highway
Rockville Centre, NY 11570
*By Appointment Only



Pipeline from Receiving Tank



Riser Pipe at Cedar Creek Shaft 6

CEDAR CREEK WPCP UPDATES

At the Cedar Creek WPCP, crews continued work on the receiving tank structure and successfully installed a pipeline connecting the receiving tank to Cedar Creek Shaft 1. Cedar Creek Shaft 1 is backfilled and hydrostatic testing from Cedar Creek Shaft 1 to Shaft 3 began. Work continued at the existing pump station to build supporting infrastructure and underlayment for the new pumps. In total, five new pumps will be installed at Cedar Creek WPCP.

SOUTH SHORE WRF UPDATES

Significant progress was made at the South Shore WRF property this quarter as we continue to move closer to Project completion.

In preparation for the arrival of the four new pumps, crews made progress installing extensive plumbing and electrical conduits. These items are key to the successful operation of the pump station, providing the power and infrastructure necessary to divert up to 75 million gallons of treated water through the new conveyance each day.

In order to blend the new pump station with the existing buildings at the South Shore WRF for a consistent and integrated look on the horizon, crews continued installing architectural panels in shades of blue and gray on the façade of the building. By the end of the quarter, the pump station building was 88% complete.



Effluent Diversion Pump Station Progress at the South Shore WRF Property