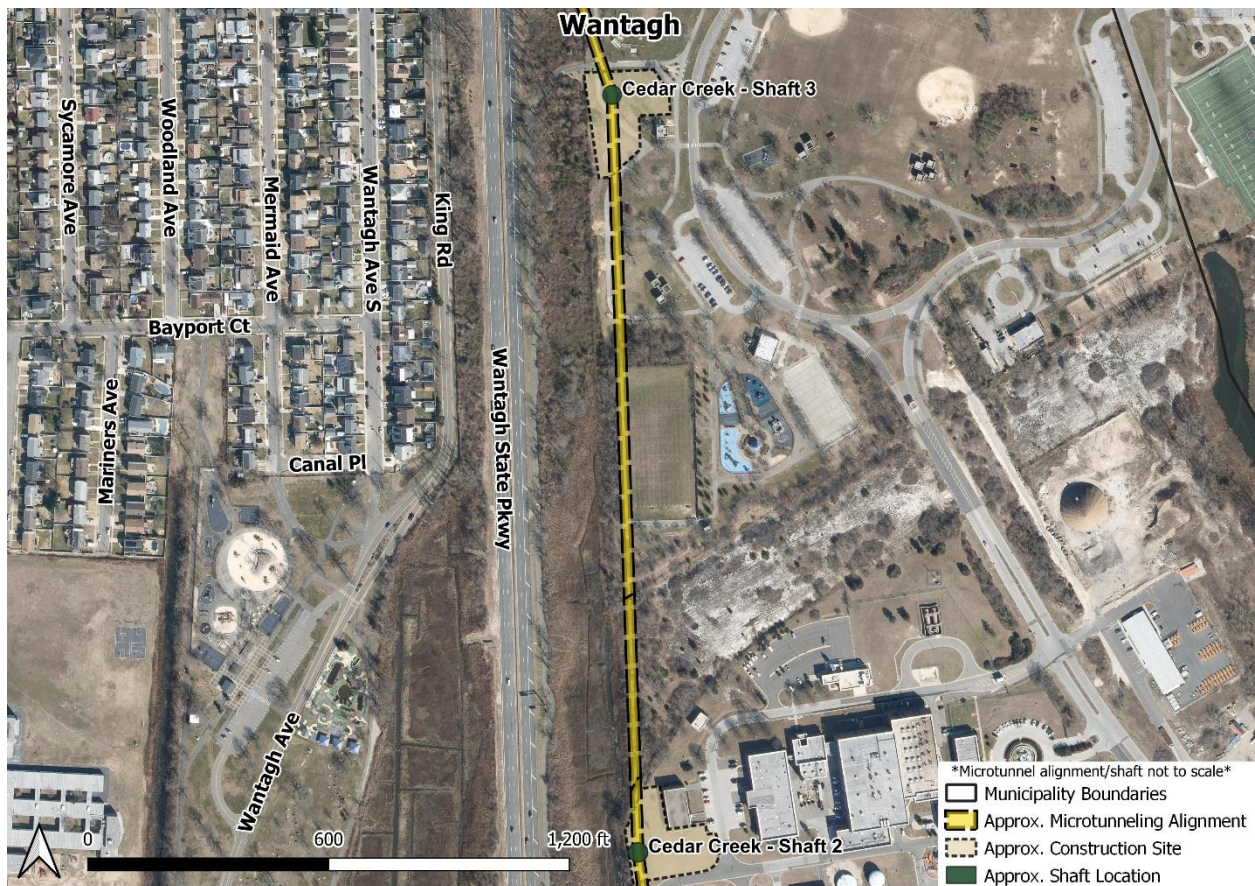


Dear Neighbor:

We are writing to update you on the construction of the Bay Park Conveyance Project. The Bay Park Conveyance Project is a partnership between the New York State Department of Environmental Conservation and the Nassau County Department of Public Works. Western Bays Constructors (WBC) is the design-builder for this innovative Project.

The Project will convey treated water from the South Shore Water Reclamation Facility at Bay Park (formerly known as the Bay Park Sewage Treatment Plant) to the existing Cedar Creek Water Pollution Control Plant’s (WPCP) ocean outfall pipe, which discharges and diffuses treated water three miles offshore in the Atlantic Ocean. Construction involves underground microtunneling within your community. Microtunneling is a safe, effective way to install piping deep into the ground, avoiding long trenches and surface disturbance.



Location of Cedar Creek Shaft 2 and Cedar Creek Shaft 3

Cedar Creek Shaft 2 (CC2) is located at Cedar Creek Park within the footprint of the Cedar Creek

WPCP. Cedar Creek Shaft 3 (CC3) is located at Cedar Creek Park, near the entrance to the Wantagh State Parkway. As construction in the park continues, we want to give you as much information as possible. Here's what you should know:

Construction Activity Update:

The next phase of microtunneling activities has commenced at CC2 and will continue deep below the ground towards CC3. This microtunneling drive is expected to continue through the month of January. Operations will take place six (6) days a week for twenty-four (24) hours a day. Crews will be present at the Cedar Creek Plant and within the park at CC3. WBC will not be working between the hours of Sunday 6:00 a.m. to Monday 6:00 a.m.

This activity is not expected to impact park-goers, but a consistent presence of construction vehicles and crews will be present in the area. Park-goers will notice increased construction activity, equipment, and personnel in and out of the park.

Through a dedicated Community Outreach Program, WBC is committed to a robust engagement process and to maintaining an open line of communication throughout construction. We are also committed to minimizing disruption to neighborhoods affected by construction. WBC's Community Outreach Team will be available to answer questions and act as a project liaison throughout the duration of construction.

For more information on this project element, we encourage you to visit our website www.BayParkConveyance.org and Facebook page [@BayParkConveyance](https://www.facebook.com/BayParkConveyance), and register for [email updates](#). Our Community Information Center is located at 265 Sunrise Highway in Rockville Centre. Please visit our website for hours. You may contact us via the Project's 24/7 hotline at (516) 252-6121 or email us at BayParkConveyance@gmail.com with any questions.

Respectfully,

Margo K. Cargill
Community Ambassador

