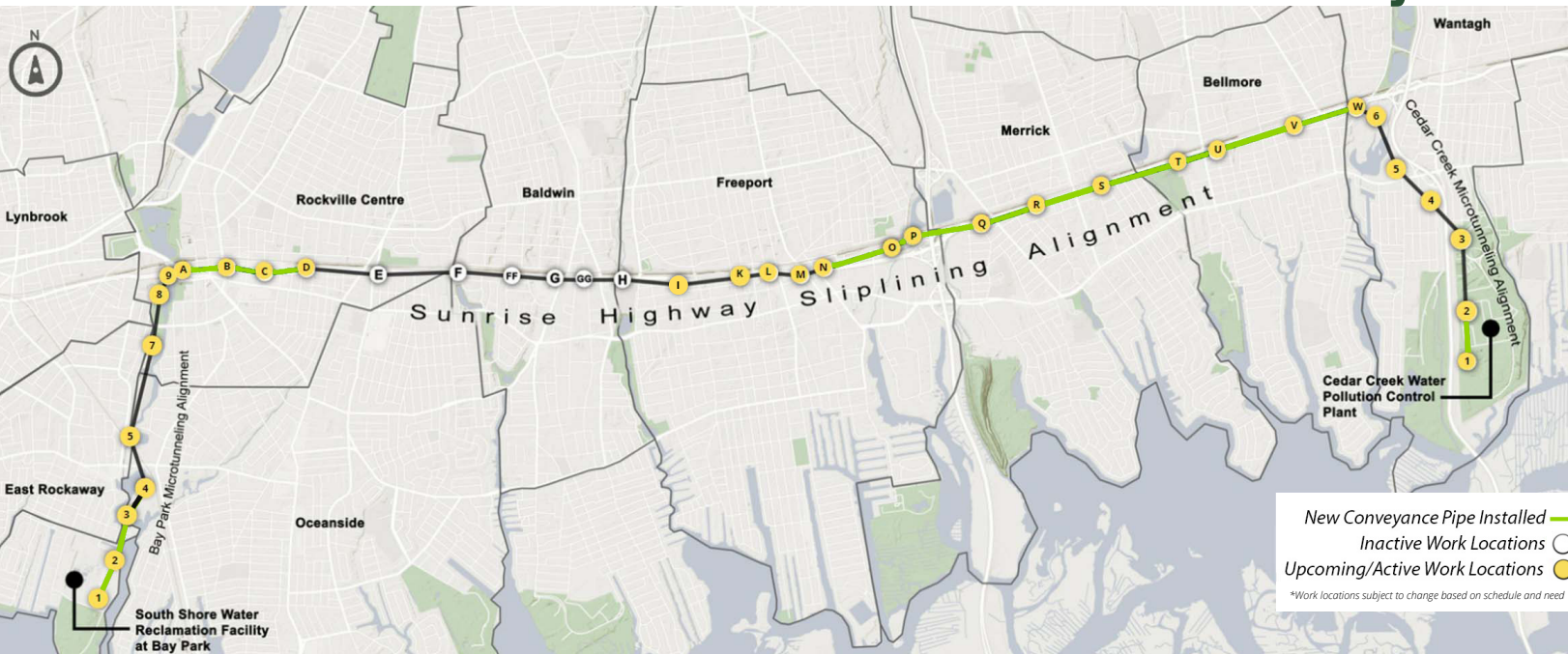


## CONSTRUCTION LOOK AHEAD

January 2023



Note: The Project work locations and description of activities explained below are dynamic and subject to change due to various factors such as delivery or weather. Visit our Facebook page [@BayParkConveyance](#) for weekly and more frequent updates regarding project activities, locations, and lane closures. Call the 24/7 Project Hotline at (516) 252-6121 with concerns and questions. Text "roadwork" to "888777" to receive updates on County-wide daily road and lane closures.

## SUNRISE HIGHWAY SLIPLINING

For the duration of the Project, we ask for your cooperation adhering to traffic safety along work zone areas. Western Bays Constructors (WBC) is coordinating with New York State Department of Transportation (NYSDOT) to communicate lane closures on their Variable Message Signs (VMS). WBC is also communicating with Nassau County Traffic Management about weekly lane closures. The locations, dates, and hours of operation are shared with the public through in-person outreach, e-mails, and the Project's website and Facebook page. Unless otherwise noted, work will take place overnight Monday through Friday, from 9 p.m. to 6 a.m. During these hours, two eastbound lanes will be closed, and one eastbound lane will remain open. In addition, intermittent daytime work may take place and temporary single lane closures on Sunrise Highway may occur for short periods during the day to support construction and ensure the safety of the traveling public. WBC will continue to monitor and control any potential noise, vibrations, and settlement from construction activities.

### Pit B (Rockville Centre)

- Pit B is located on the south side of Sunrise Highway between N. Village Avenue and N. Park Avenue.
  - Sliplining and annular grouting at Pit B are complete.
  - In January, crews will continue work to install a manhole at Pit B.

### Pits I, K, L, and M (Freeport)

- Pit I is located on the south side of Sunrise Highway just west of Madison Avenue. Pit K is located on the south side of Sunrise Highway, between South Long Beach Avenue and South Bergen Place. Pit L is located on the south side of Sunrise Highway, just east of Guy Lombardo Avenue. Pit M is located on the south side of Sunrise Highway, between Main Street and Front Street.
  - In January, crews will install SOE at Pits I, K and L in preparation for sliplining.
  - Installation of SOE can cause periods of noise and vibration.
  - In January, sliplining will commence from Pit N to Pit M.

# SUNRISE HIGHWAY SLIPLINING

## Pits N, O, and P (Freeport)

- Pit N is located on the south side of Sunrise Highway, just west of Newton Boulevard. Pits O and P are located on the north side of Sunrise Highway, west of the Meadowbrook Parkway.
  - Sliplining and annular grouting between Pit N and Pit P are complete.
  - WBC will continue to use the sites of Pits O and P for storage and laydown purposes. There will be a consistent presence of construction vehicles and crews in the area.

## Pit S (Merrick)

- Pit S is located on the south side of Sunrise Highway, east of the Meadowbrook Parkway between Hewlett Avenue and Wynsum Avenue.
  - Sliplining and annular grouting are complete from Pits P through W.
  - In January, crews will continue work to install a manhole at Pit S.

## Pit W (Wantagh)

- Pit W is located on the south side of Sunrise Highway just west of Lakeview Road in Wantagh.
  - Crews are constructing an open trench from Pit W to Cedar Creek Shaft 6 (CC6) to connect the Sunrise Highway pipeline to the Cedar Creek force main.
  - SOE installation and excavation activities will continue through January.
  - Construction activities will take place Monday through Friday, from approximately 9 a.m. to 3 p.m. with the potential for overnight work. While work is underway, one eastbound lane will be closed. Additionally, a left turn restriction will be in effect on Sunrise Highway at Lakeview Road.



SOE installation at Pit W (November 2022)

## Pit D and Pit A/Bay Park Shaft 9 (Rockville Centre)

- A construction entrance is established at Pit D, located at Joyce Field in Rockville Centre on the north side of Sunrise Highway, for storage and laydown of materials. The sidewalk in front of Joyce Field, between Morris Avenue and N. Forest Avenue will remain closed for the duration of the Project until 2024. Maintenance and Protection of Traffic (MPT) and Work Zone Traffic Control (WZTC) signage are in place to assist and direct pedestrians. When walking past Pit D, pedestrians are directed to cross Sunrise Highway at either N. Forest Avenue or Morris Avenue.
- A construction entrance is set at BP9/Pit A, located at the Sunrise Highway/Merrick Road Interchange in Rockville Centre.
  - Sliplining and annular grouting are complete from Pit A to Pit D.
  - These pits are off the roadway and use of the area is not expected to impact the traveling public. There will be a consistent presence of construction vehicles and crews.

## Temporarily Restored Pit Locations

- Since sliplining, annular grouting, and supporting activities are complete at several pits along Sunrise Highway, WBC has worked to temporarily restore the roadway. At Pits C, Q, R, T, U, and V, backfilling is complete, concrete roadway panels are removed, and temporary paving is complete. Final roadway restoration will occur in 2023.



# BAY PARK MICROTUNNELING

In the immediate areas surrounding Bay Park shaft sites, residents will notice an increase in construction vehicles and crews. WBC will continue to monitor and control any potential noise, dust, vibrations, and settlement from construction activities. Unless otherwise specified, work activities are expected to occur between 6 a.m. – 5 p.m., Monday through Friday. Saturday work is not expected in January. We will continue to update the public as more information becomes available.



BP2 Backfilling Efforts (December 2022)

## Bay Park Shafts 1 and 2

- Shaft 1 (BP1) is located within the footprint of the South Shore Water Reclamation Facility at Bay Park. BP2 is located within the boundaries of Nassau County's Bay Park, at the northeast corner of Marjorie Lane.
  - Next to BP1, crews continue construction of a new pump station, a wet well, and a diversion structure.
  - In January, crews will prep the site to install structural steel for the pump station
  - Crews will continue to construct the roof slab for the wet well.
  - Microtunneling and grouting operations are complete from BP1 to Bay Park Shaft 3 (BP3).
  - Crews will continue post-microtunneling activities and restoration efforts at BP1 and BP2.

## Bay Park Shaft 3

- BP3 is located on private property, off New Street in Oceanside.
  - The microtunnel boring machine (MTBM), "MARSH-MELLOW", is progressing from BP3 to Bay Park Shaft 4.

## Bay Park Shaft 4

- BP4 is located on private property, off New Street in Oceanside.
  - Crews will continue to prepare the site to receive MARSH-MELLOW from BP3.
  - The MTBM will then microtunnel from Bay Park Shaft 5 (BP5) to BP4.

## Bay Park Shaft 5

- BP5 is located at the East Rockaway Oxbow Park, off Ocean Avenue near the East Rockaway LIRR Station.
  - Shaft excavation is complete.
  - In January, crews will continue construction of a reinforced concrete liner wall.
  - To facilitate construction activities, access to nine parking spaces within the parking lot near Oxbow Park will remain closed until approximately Spring 2023. The parking lot's approximately 60 remaining spaces will continue to be open with two-way traffic into and out of the parking lot.



Construction near BP1 (October 2022)

## Bay Park Shafts 7 and 8

- BP7 is located at the Rockville Centre Department of Public Works Yard, off Mill River Avenue and Riverside Road. BP8 is located at Rockville Centre's Lister Field, at the Mill River Complex Park.
  - At BP7, shaft excavation is complete. Crews are constructing a reinforced concrete liner wall. Shaft excavation is complete at BP8.
  - Crews will continue to use both site locations for storage and laydown purposes.

# CEDAR CREEK MICROTUNNELING

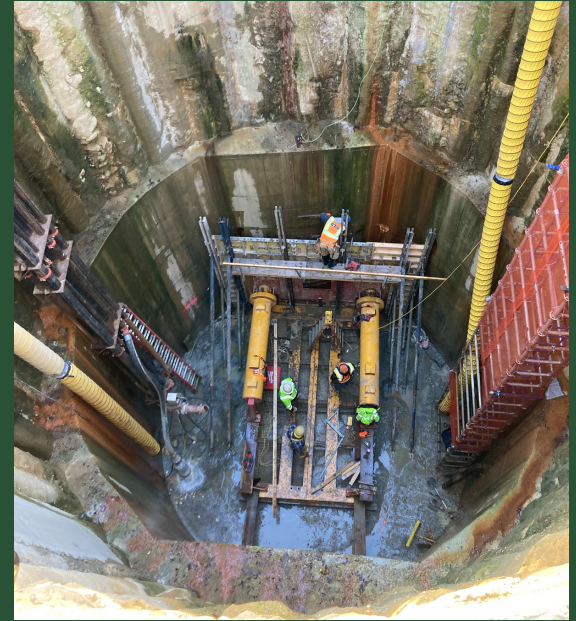
In the immediate areas surrounding Cedar Creek shaft sites, residents will notice an increase in construction vehicles and crews. WBC will continue to monitor and control any potential noise, dust, vibrations, and settlement from construction activities. Unless otherwise specified, work activities are expected to occur between 6 a.m. – 5 p.m., Monday through Friday. Saturday work is not expected.

## Cedar Creek Shaft 1

- Shaft 1 (CC1) is located within the footprint of the Cedar Creek Water Pollution Control Plant (WPCP). Work at this location will have no noticeable impact to Cedar Creek Park users.
  - Microtunneling is complete between CC1 and Cedar Creek Shaft 2 (CC2).
  - Crews will continue work on the receiving tank structure and install SOE to construct the connection with the outfall conduit.
  - Helical Pile installation will commence in early 2023.

## Cedar Creek Shaft 2

- CC2 is located within the footprint of the Cedar Creek WPCP. Work at this location will have no noticeable impact to Cedar Creek Park users.
  - In January, P.O.S.E.I.D.O.N. will microtunnel from CC2 to Cedar Creek Shaft 3.



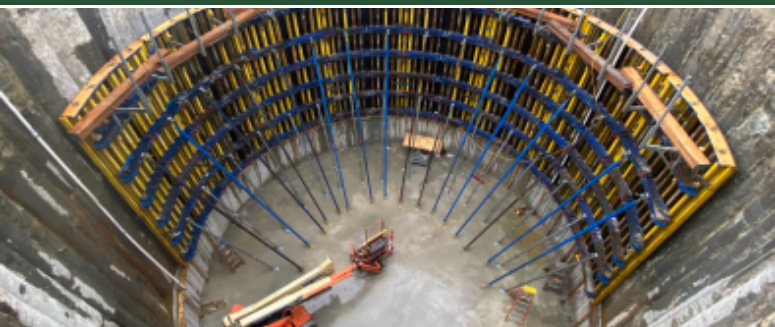
Microtunnel operations at CC2 (October 2022)

## Cedar Creek Shafts 3 and 4

- CC3 is located at Cedar Creek Park, near the entrance to the Wantagh State Parkway and Jones Beach Bike Path. CC4 is located off King Road near St Regis Street in Wantagh.
  - At CC3, shaft excavation is complete.
  - CC3 will receive P.O.S.E.I.D.O.N. from CC2, after microtunneling commences.
  - The Jones Beach Bike Path will remain open to the public throughout construction. While all active work will be confined to a fenced site, construction-related vehicles will need to enter and exit the site. Please be mindful of construction vehicles as they enter and exit the park and follow signage and/or direction from flagging personnel in the area.
  - Pipe will continue to be stored directly adjacent to the CC4 site.

## Cedar Creek Shafts 5 and 6

- CC5 is located at the intersection of Brookside Avenue and Linden Street, just west of the Wantagh State Parkway. CC6 is located just off Lakeview Road, south of Sunrise Highway in Wantagh.
  - SOE installation is complete at CC5 and CC6.
  - At CC5, shaft excavation is complete. Crews are constructing a reinforced concrete liner wall.
  - At CC6, SOE installation is underway.



## Did You Know?

Following excavation of a shaft, construction crews build a reinforced concrete liner wall. The purpose of the liner wall is to provide additional strength and support to the shaft. Rebar, pictured left, is often added to the concrete to increase the strength by transferring the stress from the concrete to the rebar. This step is vital to a successful and safe microtunnel operation.



### Email

[bayparkconveyance@gmail.com](mailto:bayparkconveyance@gmail.com)



### Website

[www.bayparkconveyance.org](http://www.bayparkconveyance.org)



### Community Information Center

265 Sunrise Highway  
Rockville Centre, NY 11570  
\*Check website for hours



### 24/7 Project Hotline

(516) 252-6121



### Facebook

[@BayParkConveyance](https://www.facebook.com/BayParkConveyance)

\*Check page for weekly updates on lane closures