

ELECTED OFFICIALS AND
FIRST RESPONDERS
MONTHLY MEETING



**The Bay Park
Conveyance Project**
A Western Bays Resiliency Initiative

June 27, 2023



**Department of
Environmental
Conservation**



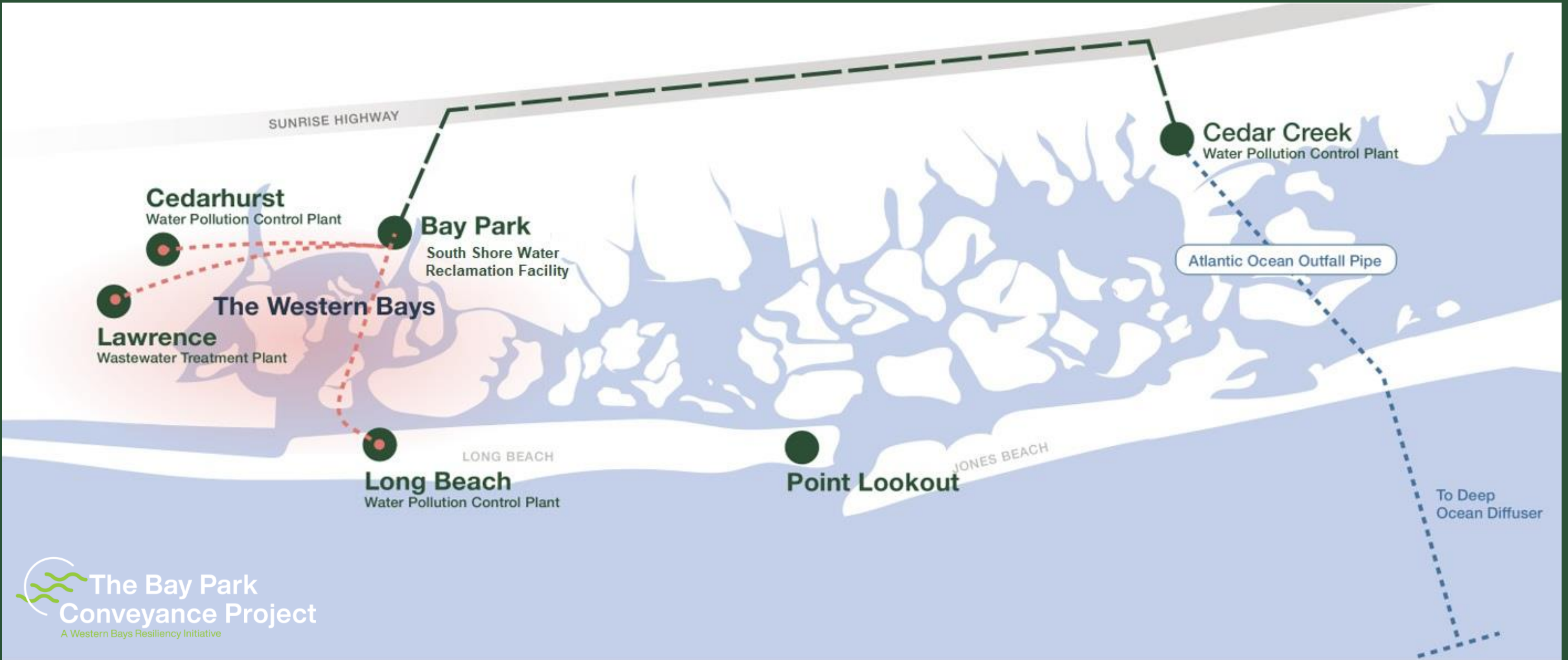


AGENDA

1. Project Background
2. Construction Updates
3. Stakeholder Engagement
4. Question and Answer Session

PROJECT BACKGROUND





The Project will reduce nitrogen pollution in the Western Bays by conveying treated water from the South Shore Water Reclamation Facility* to the Cedar Creek Water Pollution Control Plant (WPCP) ocean outfall.

*Formerly known as Bay Park Sewage Treatment Plant

PROJECT BENEFITS



STORM PROTECTION

Spur the rapid ecological recovery of the Western Bays marshlands, which will protect coastal communities from storm surge and sea-level rise



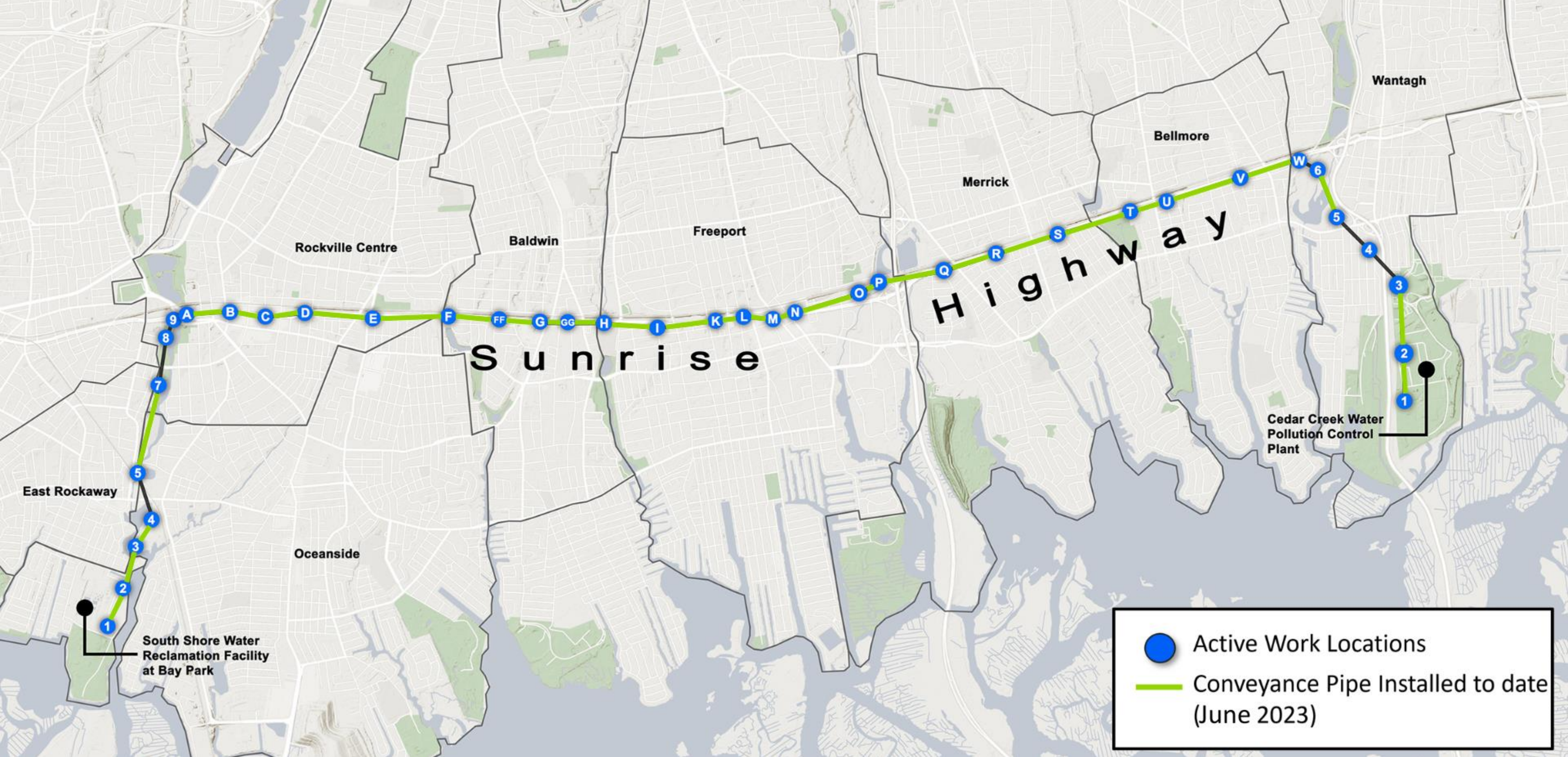
QUALITY OF LIFE FACTORS

Maximize quality of life by providing residents a place to work and play



ECONOMIC BENEFITS

The ecological recovery of the Western Bays and improved water quality will enhance and expand water-based recreational and commercial opportunities



- Active Work Locations
- Conveyance Pipe Installed to date (June 2023)

CONSTRUCTION TECHNIQUES

- Microtunneling - Technique used to install piping deep into the ground.
- Sliplining - Utilizes existing infrastructure by inserting a new pipe into an existing pipe.
- Support of Excavation (SOE) - Used to support the earth during excavation.



CONSTRUCTION UPDATES



PROJECT BY THE NUMBERS

MICROTUNNELING PROGRESS BY THE NUMBERS

14/14

SHAFTS CONSTRUCTED



2

SHAFTS BACKFILLED



99%

OF DESIGN
COMPLETED



11,138

LINEAR FEET OF
MICROTUNNELING
COMPLETED



60%

OF MICROTUNNELING
COMPLETED



70%
OF OVERALL
CONSTRUCTION
COMPLETED



SLIPLINING PROGRESS BY THE NUMBERS

24/24

PITS CONSTRUCTED



10

PITS TEMPORARILY
RESTORED



37,907

LINEAR FEET OF
SLIPLINING
COMPLETED



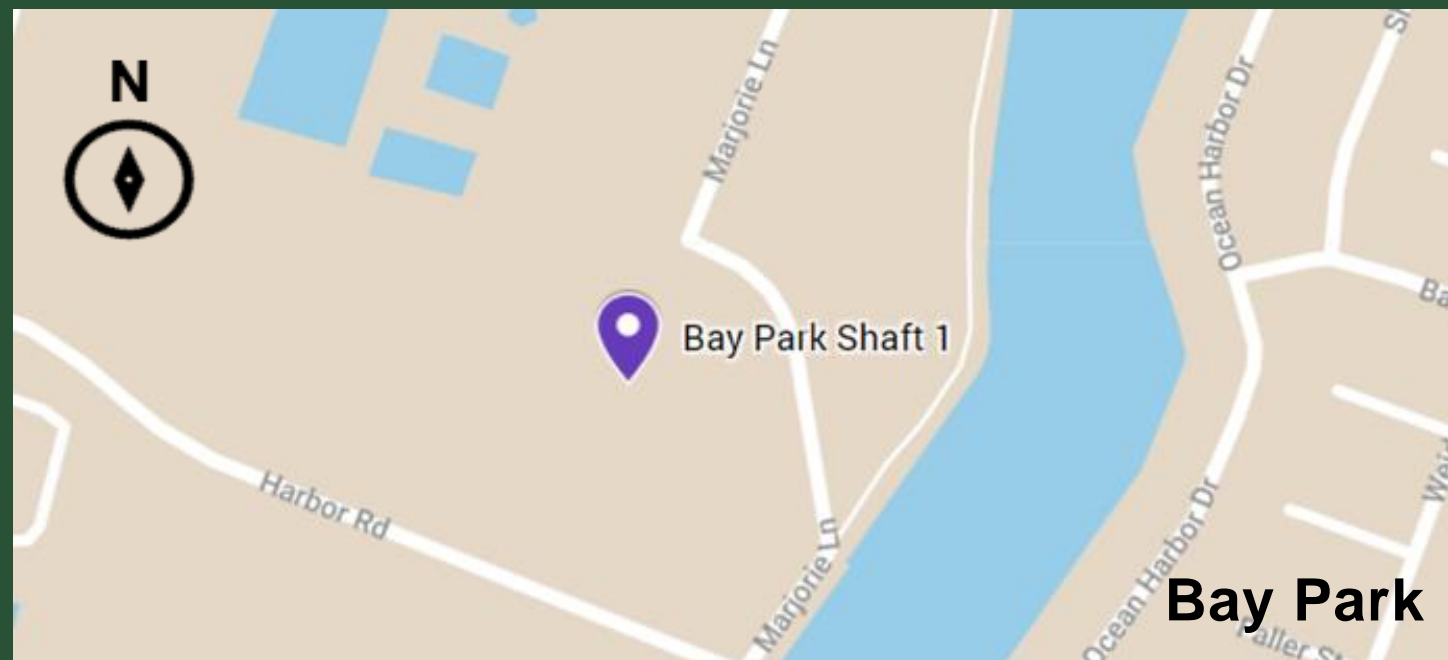
96%

OF SLIPLINING
COMPLETED



BAY PARK SHAFT 1 (BP1)

- Microtunneling is complete at BP1 and the shaft is backfilled.
- Crews are constructing a new pump station, wet well, and diversion structure.
- In July, crews will continue to install utilities, structural steel, hatches, ladders and platforms at the pump station.



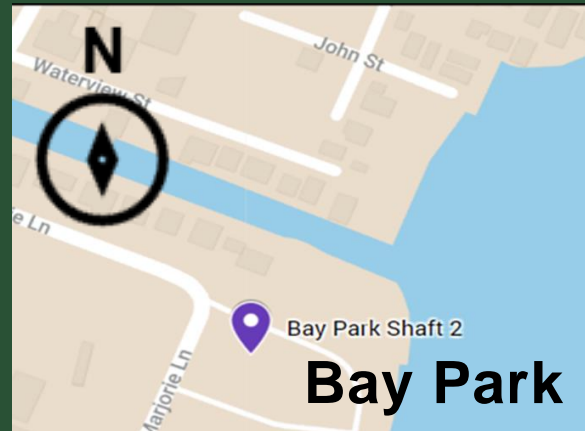
Location: Within the footprint of the South Shore Water Reclamation Facility at Bay Park



Pump Station Construction Near BP1 (April 2023)

BAY PARK SHAFTS 2 (BP2), 3 (BP3) AND 4 (BP4)

- Microtunneling is complete from BP1 to BP4.
- Microtunneling from Bay Park Shaft 5 (BP5) to BP4 will commence in late June. There will be a consistent presence of construction vehicles and crew in the area near BP4.
- Backfilling and restoration efforts will continue at BP2 and BP3.



Locations:

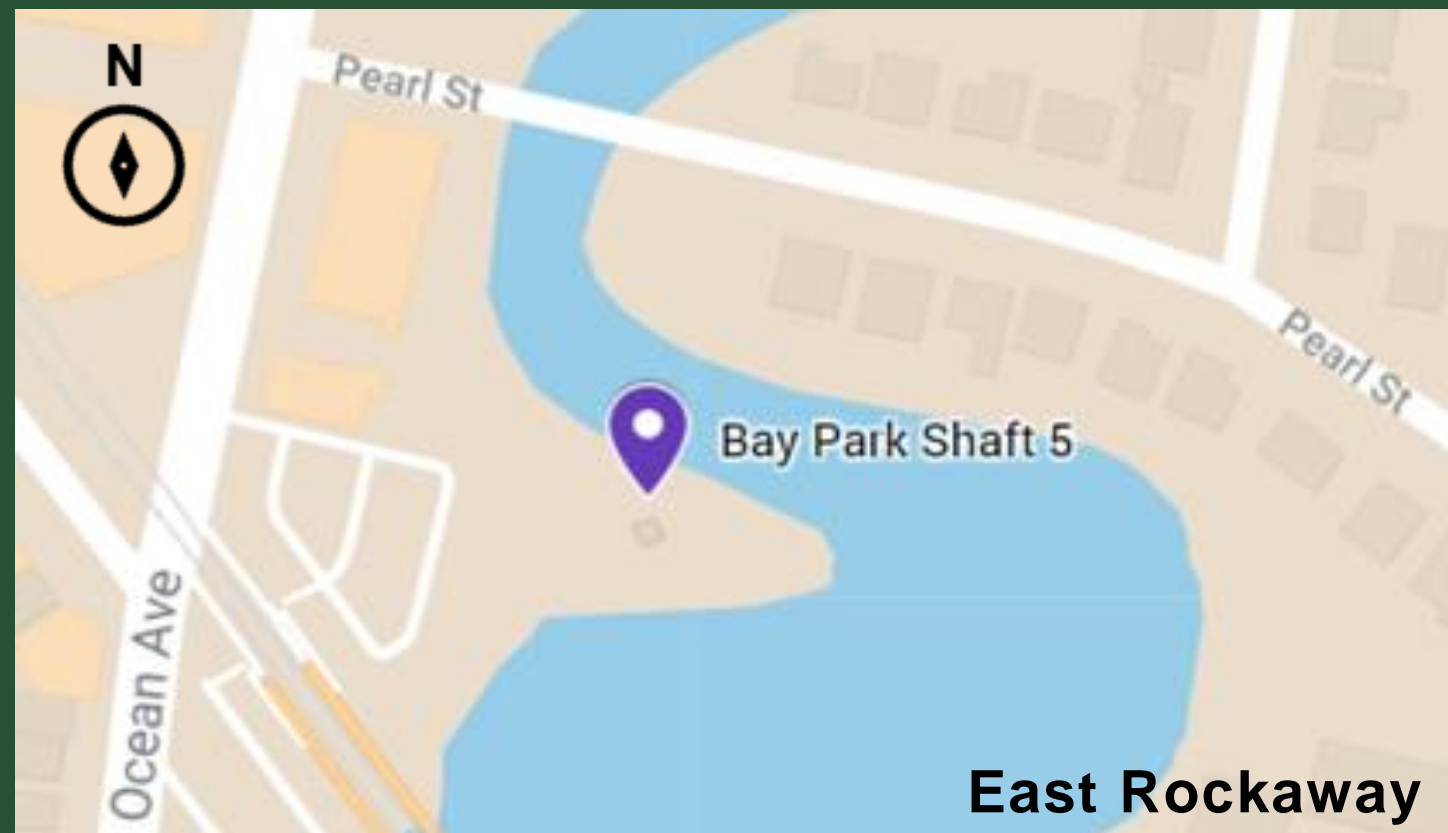
BP2: Within the boundaries of Nassau County's Bay Park, at the northeast corner of Marjorie Lane

BP3: Private property off New Street in Oceanside

BP4: Private property off New Street in Oceanside



BAY PARK SHAFT 5 (BP5)



Location: East Rockaway Oxbow Park off Ocean Avenue near the East Rockaway LIRR Station

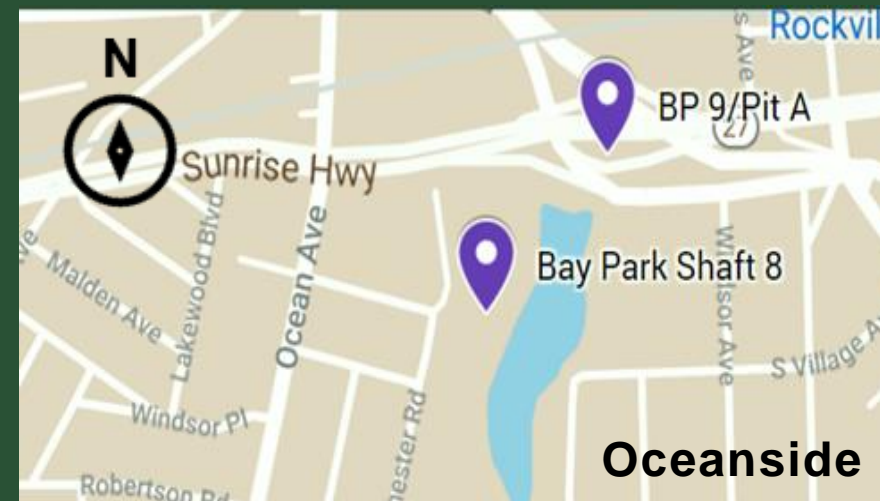
- The Project's longest and curved microtunnel drive from BP5 to Bay Park Shaft 7 is complete.
- In late June, microtunneling will resume at BP5 heading south to BP4.
- The Project's microtunnel boring machine (MTBM), MARSH-MELLOW, will microtunnel 24-hours a day, seven days a week.
- Oxbow Park will remain closed.
- The public will notice pipe storage at Oxbow Park parking lot until approx. Q4 of 2023.



View of Microtunneling Activities at BP5 (June 2023)

BAY PARK SHAFTS 7 (BP7) AND 8 (BP8)

- Microtunneling is complete from BP5 to BP7.
- Post microtunneling activities are underway.
- In July, crews will continue excavation of BP8.
- Crews continue to use the BP7 and BP8 sites for storage and laydown purposes.



Locations:

BP7: Rockville Centre Department of Public Works Yard off Mill River Avenue

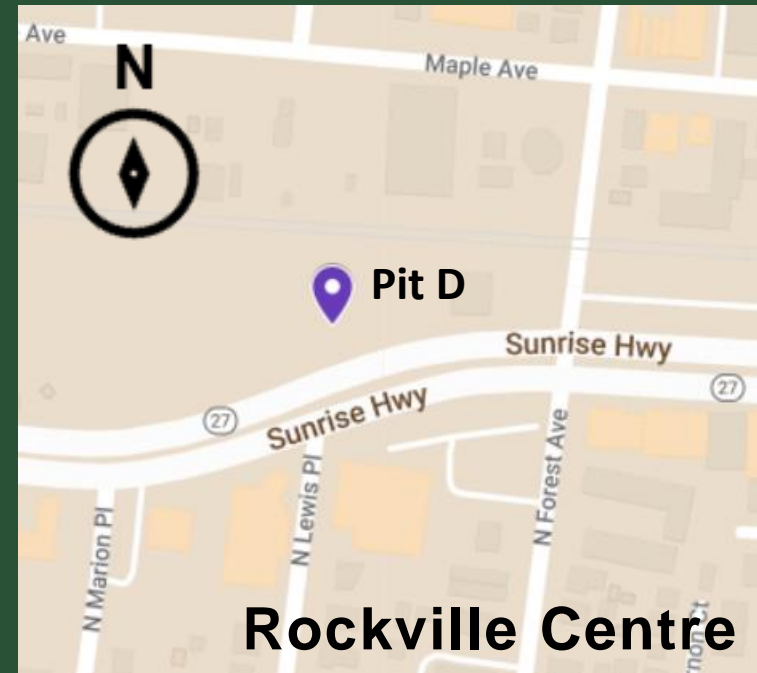
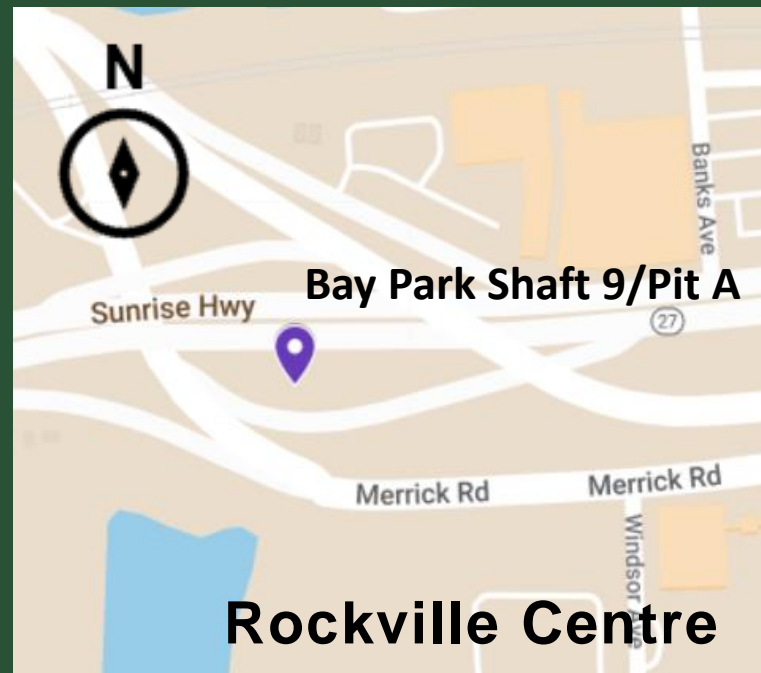
BP8: Rockville Centre's Lister Field at the Mill River Complex Park



MTBM Breakthrough at BP7 (June 2023)

BAY PARK SHAFT 9/PIT A AND PIT D

- In late July, crews will excavate the shaft at BP9 following excavation of BP8.
- Eastbound lane on the Merrick Road exit ramp on Sunrise Highway will have intermittent road closures.
- The site of Pit D will continue to be used for storage and laydown of materials.
- The sidewalk in front of Joyce Field, between Morris Avenue and North Forest Avenue, will remain closed for the duration of the Project until 2024.



Locations:

Bay Park Shaft 9 (BP9)/Pit A: A construction entrance has been established at Sunrise Highway/Merrick Road Interchange

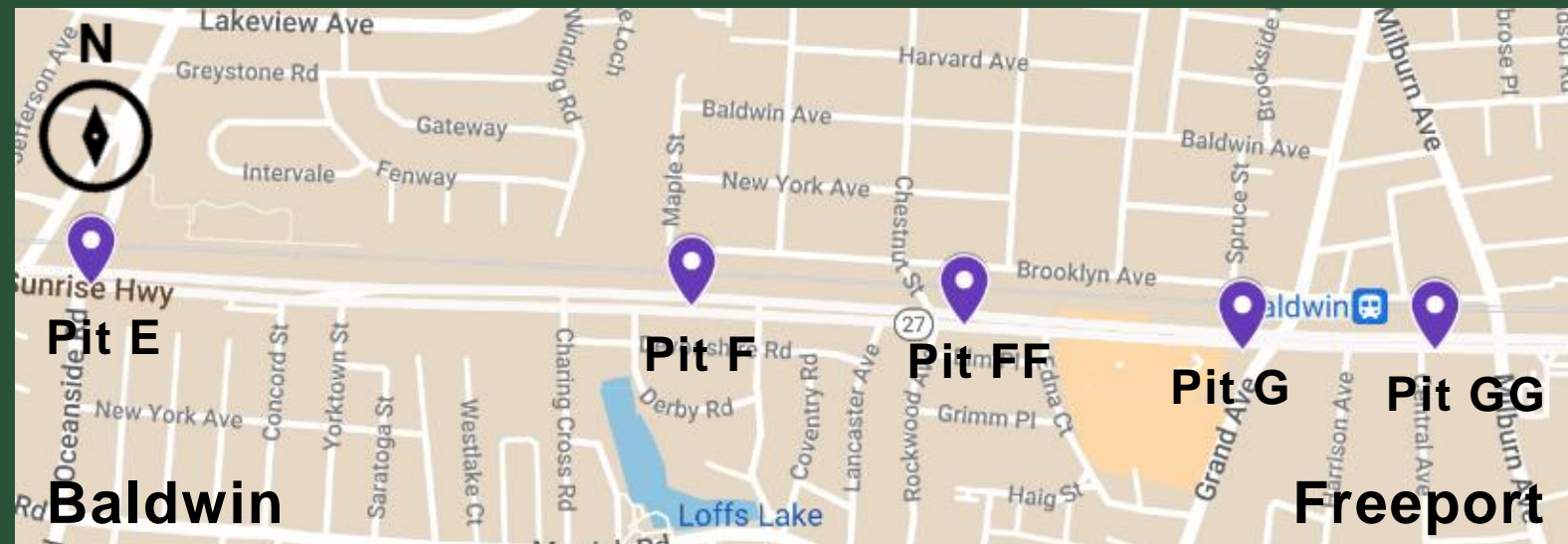
Pit D: A construction entrance has been established at Joyce Field in Rockville Centre on the north side of Sunrise Highway



Construction Site at BP9 (January 2023)

SUNRISE HWY PITS E, F, FF, G, and GG

- Sliplining is complete along Sunrise Highway.
- In July, grouting activities will continue between Pit D and Pit GG.
- Installation of a manhole will take place at Pit F.



Locations:

Pit E: South side of Sunrise Highway between N. Long Beach Road and Oceanside Road

Pit F: South side of Sunrise Highway east of Derby Road

Pit FF: South side of Sunrise Highway between Rockwood Avenue and Edna Court

Pit G: South side of Sunrise Highway west of Central Avenue

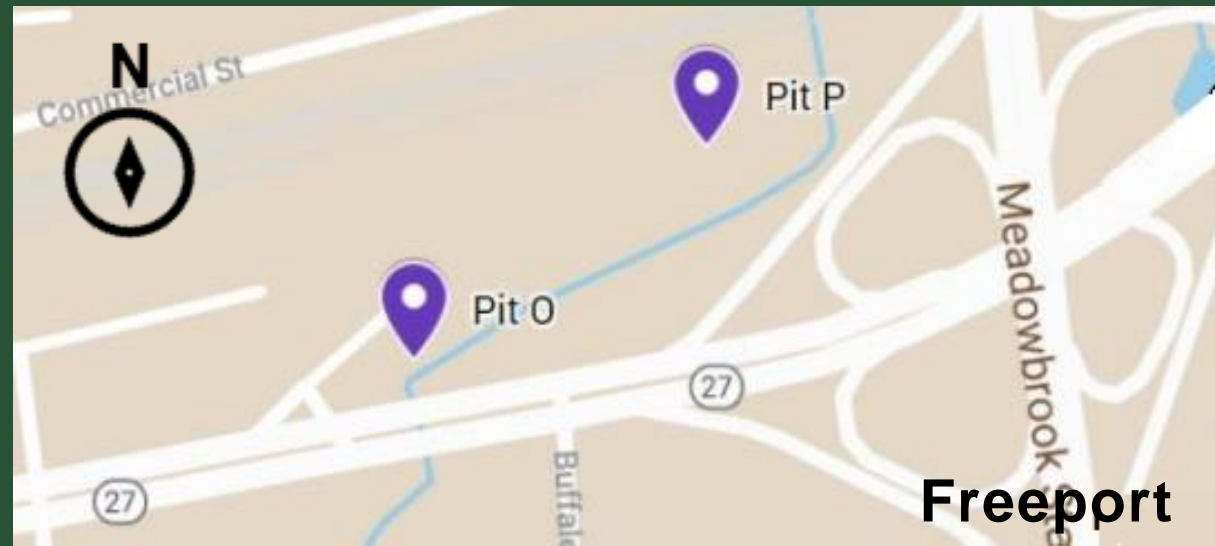
Pit GG: South side of Sunrise Highway east of Central Avenue



Sliplining at Pit FF (May 2023)

SUNRISE HWY PITS O AND P

- Hydrostatic testing of the new pipeline is complete from Pits O to W.
- WBC will continue to use the sites of Pits O and P for storage and laydown purposes.
- There will be a consistent presence of construction vehicles and crews in the area.



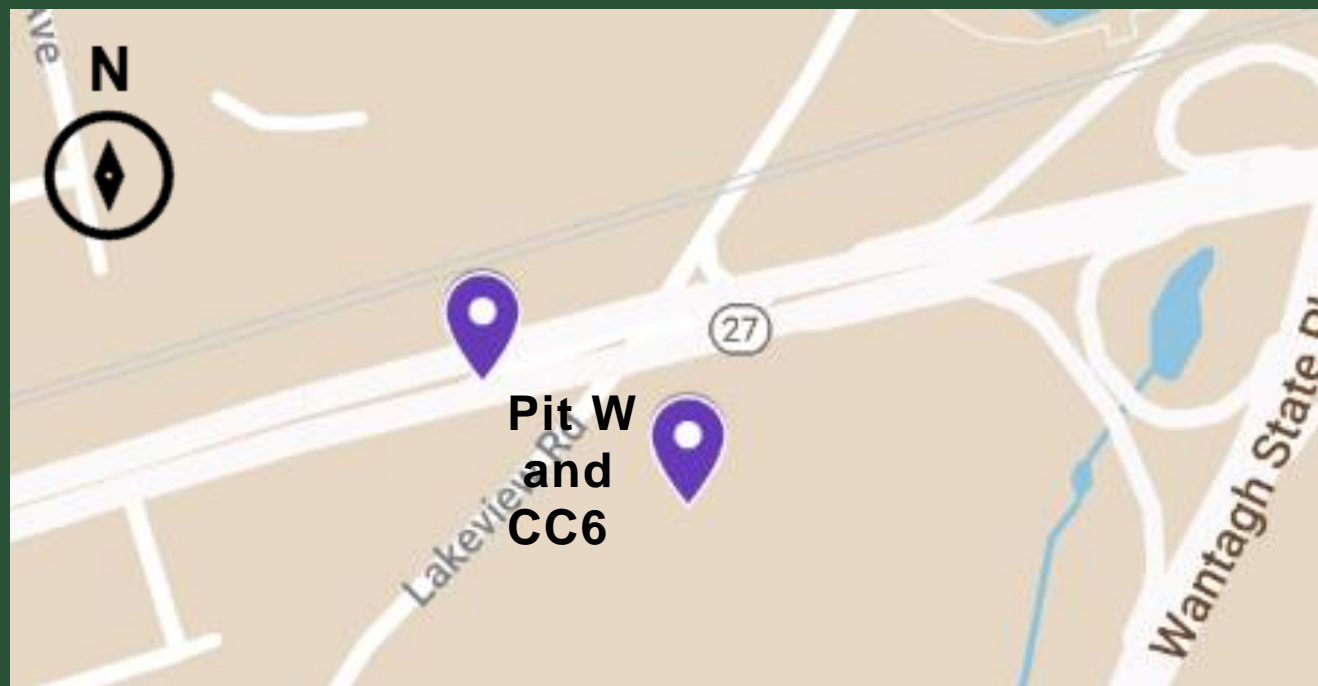
Locations:
Pits O and P: North side of Sunrise Highway west of the Meadowbrook



Work at Pit O (April 2023)

SUNRISE HWY PIT W and CEDAR CREEK SHAFT 6 (CC6)

- Crews are constructing an open trench from Pit W to CC6 to connect the Sunrise Highway pipeline to the Cedar Creek pipeline.
- Beginning in July, a portion of Lakeview Road will be closed temporarily to support this work. This closure will continue approx. 2-3 months.
- SOE installation between Pit W and CC6 will continue throughout the month.



Locations:

Pit W: South side of Sunrise Highway west of Lakeview Road in Wantagh

CC6: Off Lakeview Road south of Sunrise Highway



SOE near Pit W (May 2023)

SUNRISE HWY

Temporary Roadway Restoration

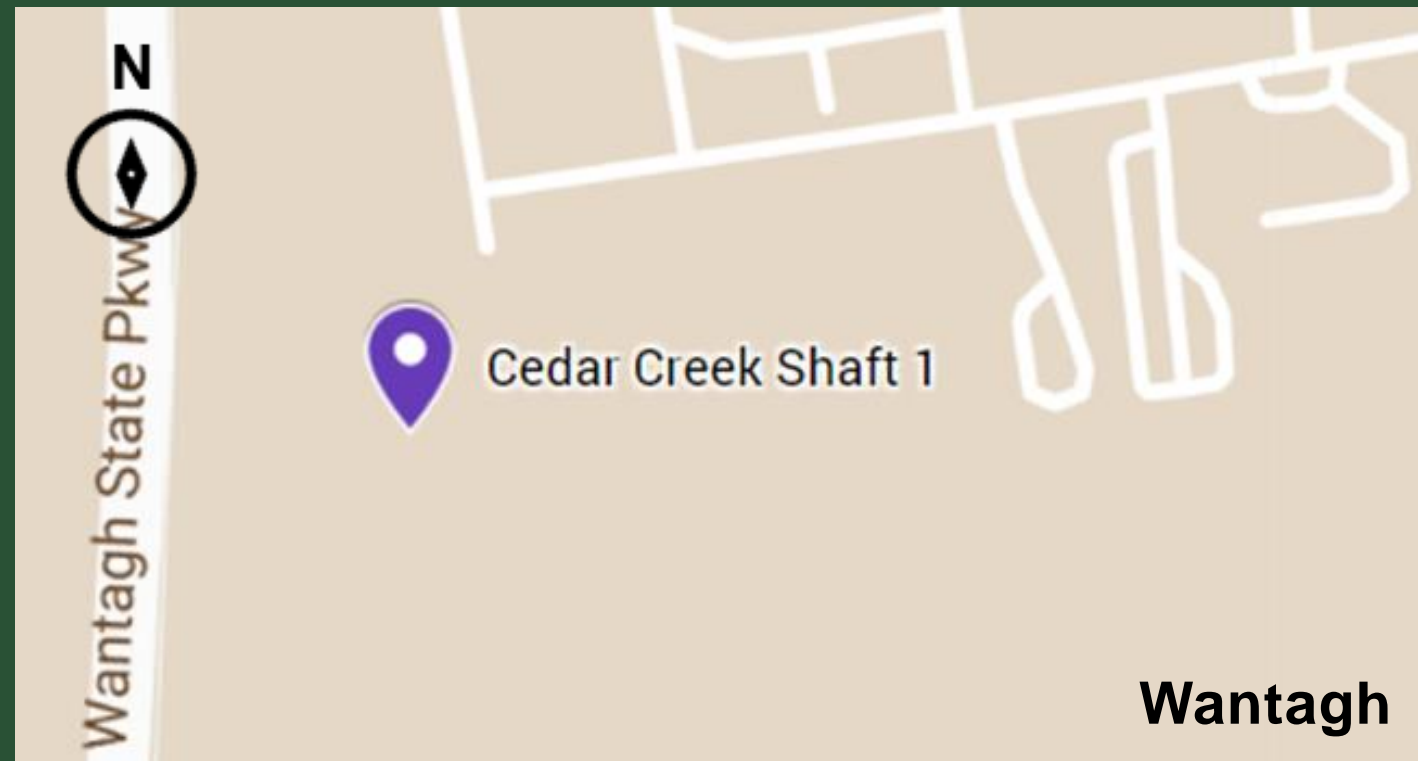
- WBC temporarily restored the roadway at Pits **B, C, H, L, N, Q, R, T, U, and V** where sliplining, annular grouting, and supporting activities are complete.
- Final roadway restoration will begin in 2023.



Pit H (April 2023)

CEDAR CREEK SHAFT 1 (CC1)

- Microtunneling and grouting are complete from CC1 to Cedar Creek Shaft 2.
- Crews continue work on the receiving tank structure, and SOE and excavation are complete for the wet tap area.
- Helical Pile installation will continue through July.
- Work at this location should have no noticeable impact to Cedar Creek Park users.



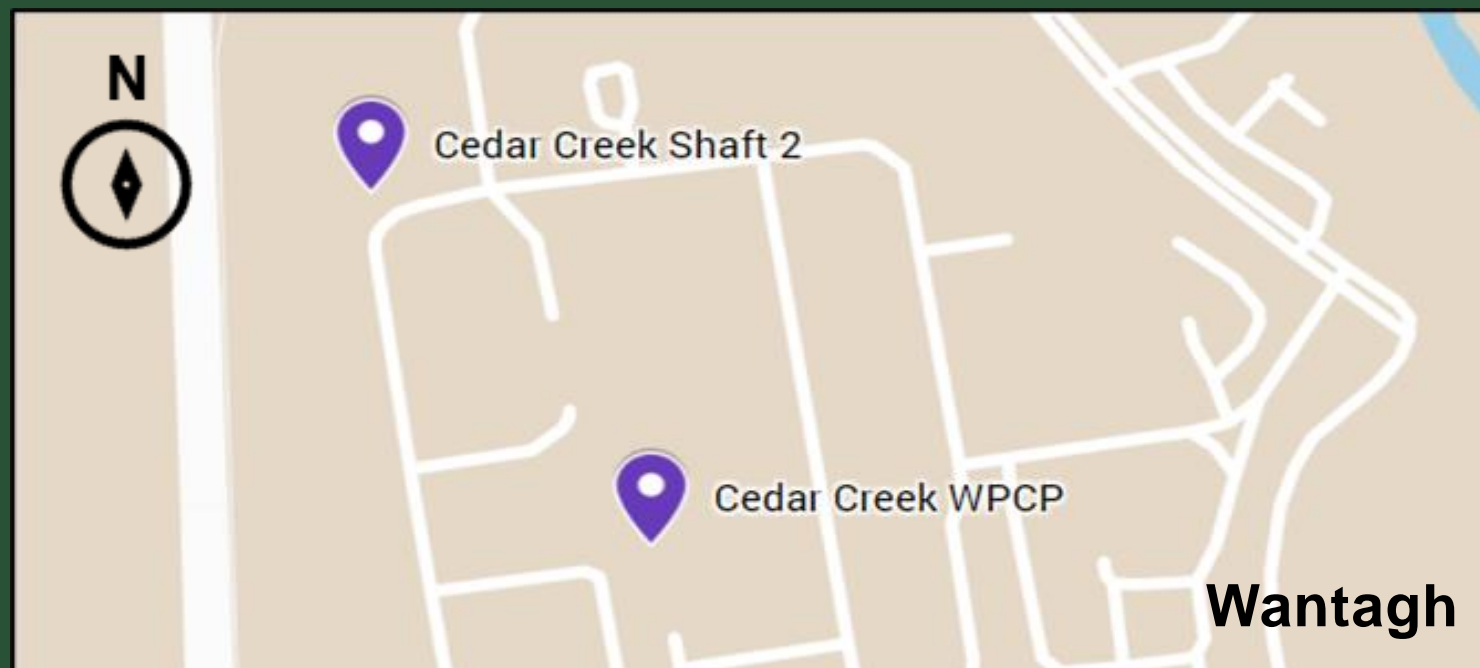
Location: Within footprint of the Cedar Creek WPCP



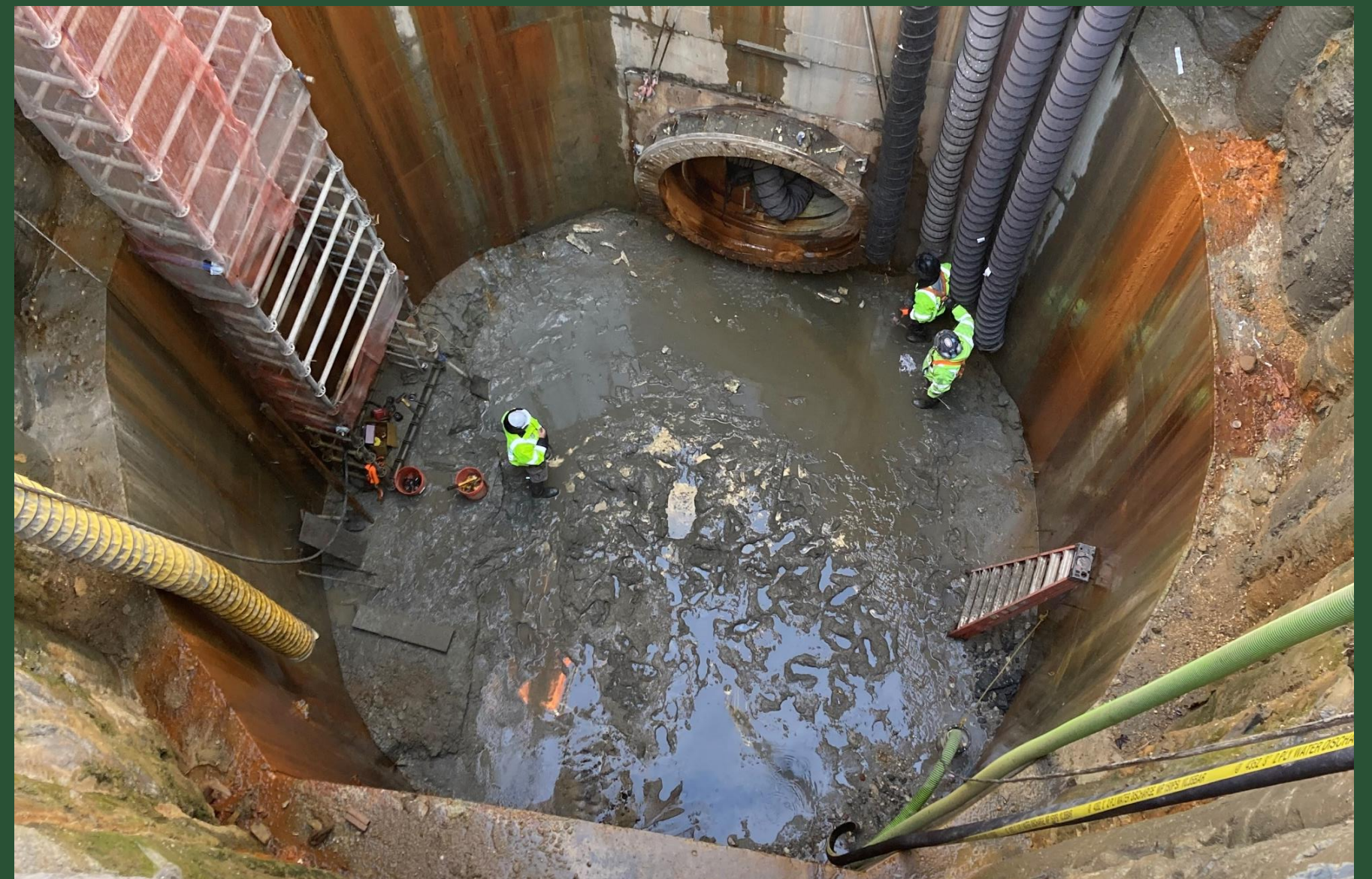
Helical Pile Installation near CC1 (May 2023)

CEDAR CREEK SHAFT 2 (CC2)

- Microtunneling is complete from CC2 to Cedar Creek Shaft 3.
- Crews are installing a manhole at CC2 and backfilling the shaft.
- Restoration activities will continue throughout the month.



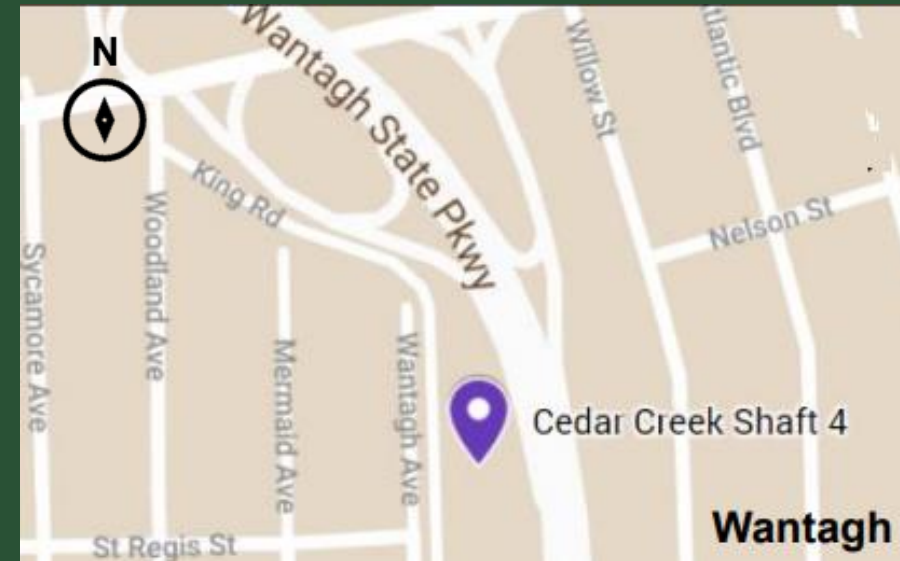
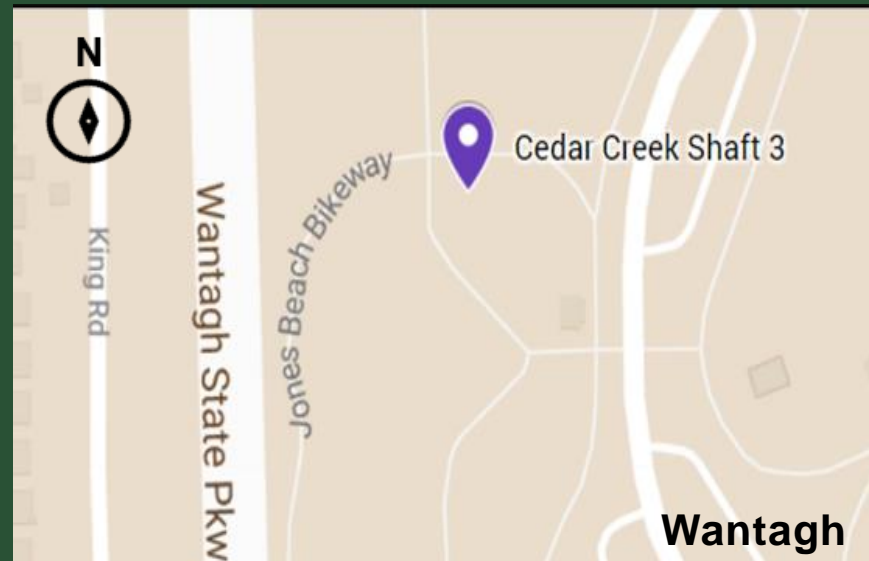
Location: Within the footprint of the Cedar Creek WPCP



Restoration Activities at CC2 (March 2023)

CEDAR CREEK SHAFTS 3 (CC3) AND 4 (CC4)

- CC3 will serve as a receiving shaft for microtunneling later this year.
- The Jones Beach Bike Path will remain open to the public throughout construction.
- Microtunneling is expected to commence at CC4 in late July heading north to Cedar Creek Shaft 5.
- Pipe will continue to be stored directly adjacent to the CC4 site.



Locations:

CC3: Cedar Creek Park near the entrance to the Wantagh State Parkway and Jones Beach Bike Path

CC4: Off King Road adjacent to Wantagh Avenue/St. Regis Street



Shaft at CC3 (April 2023)

CEDAR CREEK SHAFT 5 (CC5)

- Microtunneling from CC5 to CC6 is complete.
- CC5 will serve as a receiving shaft for microtunneling from CC4.
- There will be a continued presence of construction vehicles and crew in the area near CC5.



Location: At the intersection of Brookside Avenue and Linden Street just west of the Wantagh State Parkway



Grouting Activities at CC5 (April 2023)

PROTECTION OF TRAVELING PUBLIC AND WORK ZONES

- The Project team has deployed Work Zone Traffic Control and Maintenance and Protection of Traffic (MPT) signage to protect public safety and assist motorists and pedestrians around WBC work areas.
- Variable Message Signage boards are deployed in advance of lane closures.
- Weekly “Before You Go” Facebook posts highlight lane closures for the week ahead.
- The Project team distributes canvassing notices to nearby residents and businesses, as needed.



TREE REMOVAL AND RESTORATION

- Limited removal of vegetation and trees facilitates construction across the Project alignment.
- NYSDEC and NCDPW are committed to – at a minimum – replacing trees removed during construction.
- Tree restoration plan and schedule for replanting are being developed.

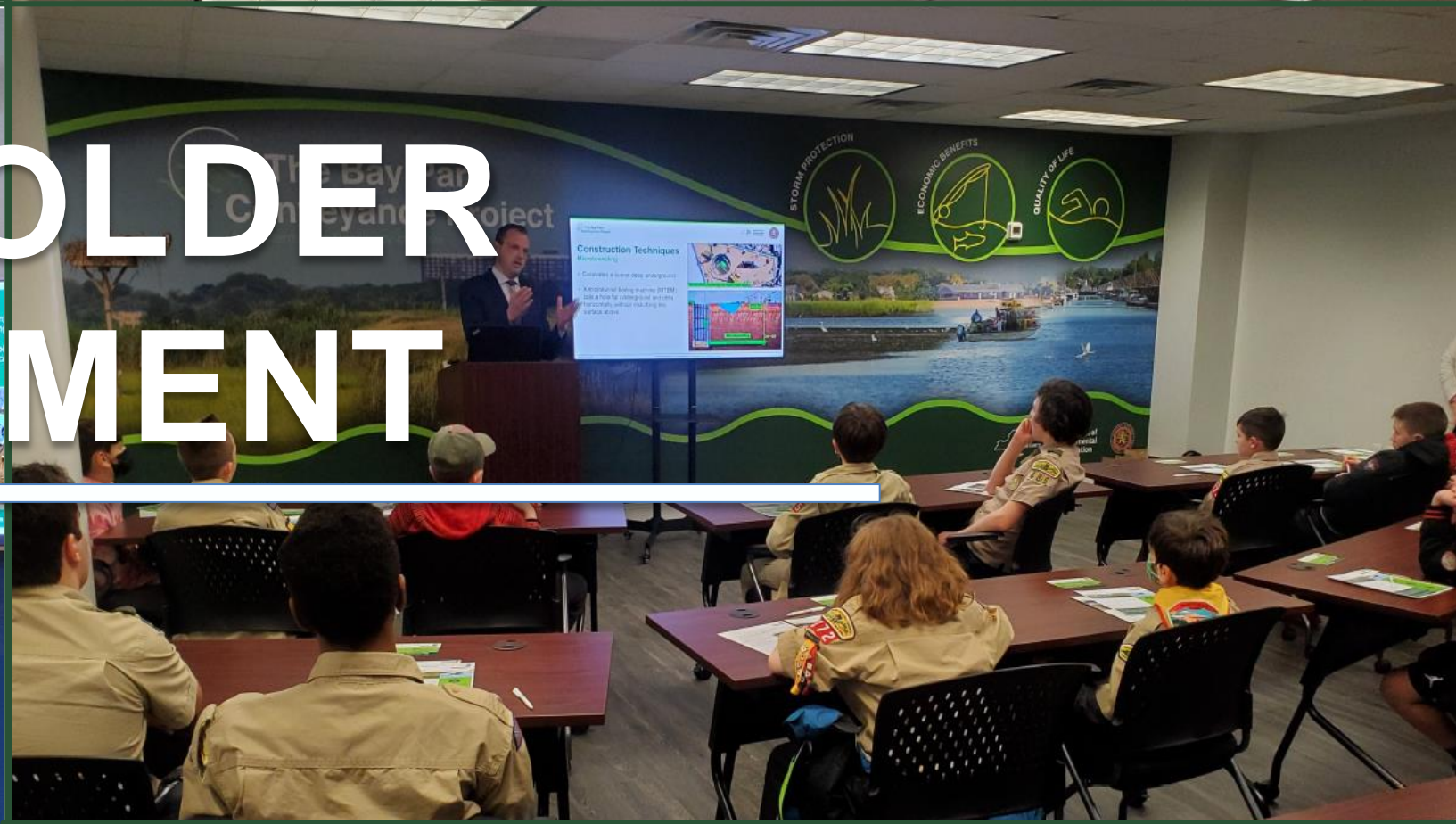




SPOTLIGHT ON SAFETY & CONSTRUCTION TIDINESS

- All work pits and shafts are enclosed and protected with fencing, inaccessible to the public.
- WBC is following all OSHA guidelines.
- Quality control team is present during each operation.
- Emergency services briefed monthly including onsite visits to shaft/pit locations.
- Ongoing coordination with WBC safety to establish protocol for emergency situations.

STAKEHOLDER ENGAGEMENT



COMMUNITY INFORMATION CENTER (CIC)

- The CIC, located at 265 Sunrise Highway in Rockville Centre, is open by appointment.
- WBC offers in-person and virtual meetings from the CIC.
- Contact us to schedule a meeting.



COMMUNITY OUTREACH PROGRAM

- Construction monthly look aheads and e-blasts.
- Door-to-door and digital canvassing notices.
- “Before You Go” Facebook campaign posted weekly.
- Quarterly Newsletters and public information sessions.
- Dedicated 24/7 project hotline, email, Facebook, and website.
- “What’s Happening Here” signs at each work location.
- Attendance at community events.





CONTACT US

Email

BayParkConveyance@gmail.com

24/7 Project Hotline

(516) 252-6121

Website

www.BayParkConveyance.org

Community Information Center

265 Sunrise Highway

Rockville Centre, New York 11570

*Available by appointment

Facebook

@BayParkConveyance

QUESTION AND ANSWER SESSION





THANK YOU!



The Bay Park
Conveyance Project

A Western Bays Resiliency Initiative