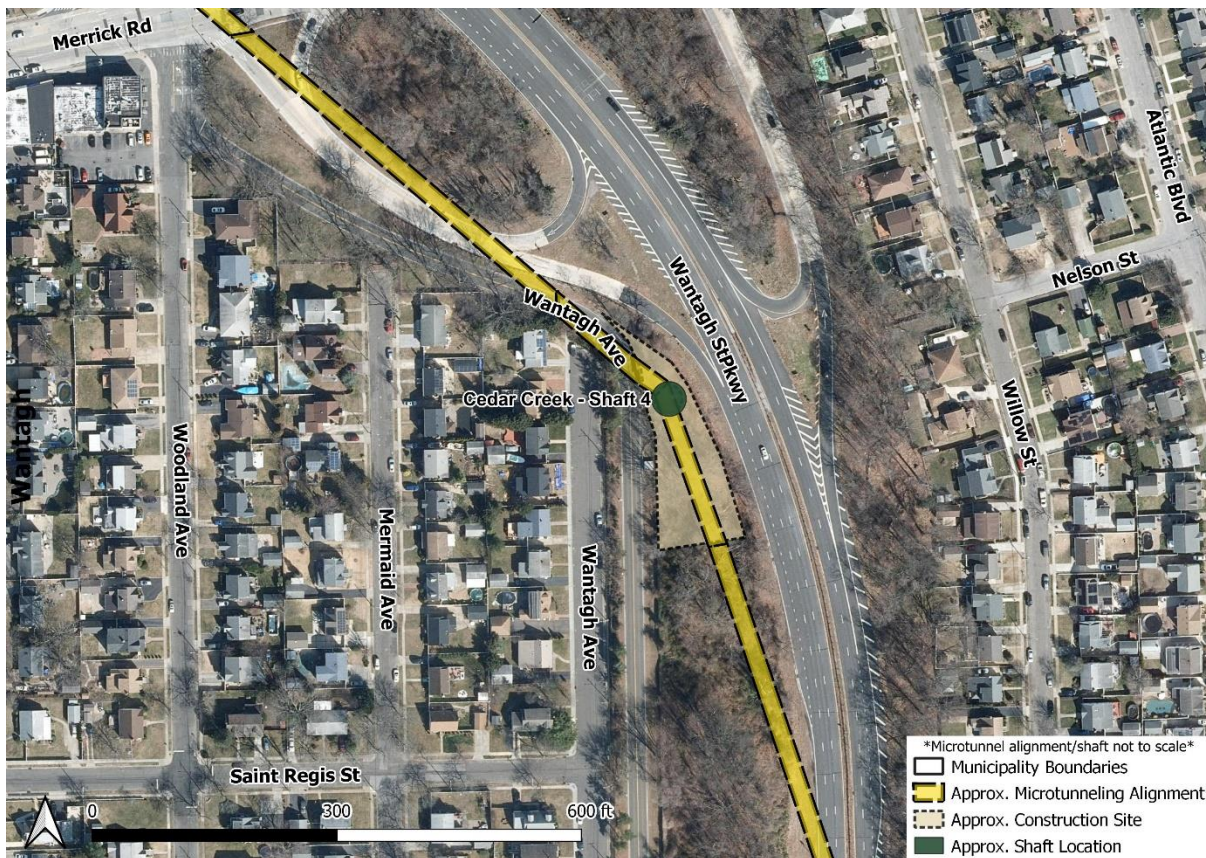


Dear Neighbor:

We are writing to update you on the construction of the Bay Park Conveyance Project. The Bay Park Conveyance Project is a partnership between the New York State Department of Environmental Conservation and the Nassau County Department of Public Works. Western Bays Constructors (WBC) is the design-builder for this innovative Project.

The Project will convey treated water from the South Shore Water Reclamation Facility at Bay Park (formerly known as the Bay Park Sewage Treatment Plant) to the existing Cedar Creek Water Pollution Control Plant’s (WPCP) ocean outfall pipe, which discharges and diffuses treated water three miles offshore in the Atlantic Ocean. Construction involves underground microtunneling within your community. Microtunneling is a safe, effective way to install piping deep into the ground, avoiding long trenches and surface disturbance.



Location of Cedar Creek Shaft 4

Cedar Creek Shaft 4 (CC4) is located off of King Road near St. Regis Street. As construction continues, we want to give you as much information as possible. Here’s what you should know.

Construction Activity Update:

Microtunneling activities will soon begin at CC4. In coming days, you will notice an increased presence in the area as equipment and materials are mobilized and staged at the site to prepare for microtunneling. Microtunneling is anticipated to begin as early as May. To perform this work, a microtunnel boring machine (MTBM) will tunnel deep below the ground moving north to Cedar Creek Shaft 5 (CC5) located at Brookside Avenue and Linden Street, west of the Wantagh Parkway. Once the MTBM arrives at CC5, the machine will be transported using trucks and returned to CC4 where it will again microtunnel deep below the ground moving south to Cedar Creek Shaft 3 (CC3). CC3 is located at Cedar Creek Park, near the entrance to the Wantagh State Parkway and Jones Beach Bike Path. Pipe will continue to be stored directly adjacent to the CC4 site. Once microtunneling begins, operations will take place seven (7) days a week for twenty-four (24) hours a day. We will continue to keep you apprised of activities including the start date of microtunneling and duration.

Through a dedicated Community Outreach Program, WBC is committed to a robust engagement process and to maintaining an open line of communication throughout construction. We are also committed to minimizing disruption to neighborhoods affected by construction. WBC's Community Outreach Team will be available to answer questions and act as a project liaison throughout the duration of construction.

For more information on this project element, we encourage you to visit our website www.BayParkConveyance.org and Facebook page [@BayParkConveyance](https://www.facebook.com/BayParkConveyance), and register for [email updates](#). Our Community Information Center is located at 265 Sunrise Highway in Rockville Centre. Please visit our website for hours. You may contact us via the Project's 24/7 hotline at (516) 252-6121 or email us at BayParkConveyance@gmail.com with any questions.

Respectfully,

Margo K. Cargill
Community Ambassador

