

PUBLIC INFORMATION SESSION



The Bay Park Conveyance Project

A Western Bays Resiliency Initiative

MAY 19, 2022



WESTERN BAYS CONSTRUCTORS
PICONE | NORTHEAST REMSCO



Department of
Environmental
Conservation



Virtual Meeting Format



Members of the public join via URL, Zoom Meeting ID, or Phone



Project Presentation



Live Question and Answer Session

To Ask a Question

- Use the raise hand feature to indicate you have a question or enter your question using the chat function at the bottom of the screen.
- When called upon during the live Q & A, a member of the Project Team will unmute your audio. You will then have to unmute yourself.
- State your name and affiliation prior to asking your question.

AGENDA

1. Project Background
2. Construction Updates
3. Stakeholder Engagement
4. Question and Answer Session

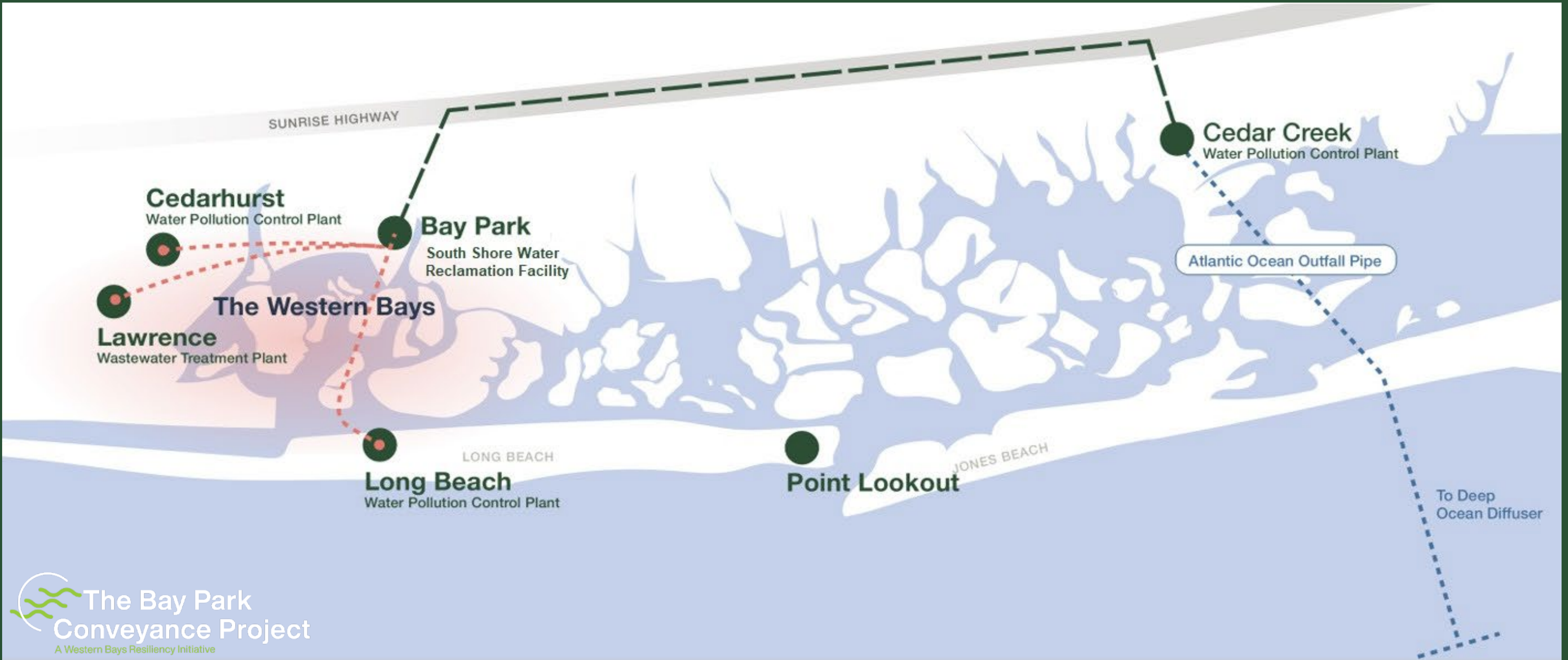


PROJECT BACKGROUND



WESTERN BAYS CONSTRUCTORS

PICONE | NORTHEAST REMSCO



The Project will reduce nitrogen pollution in the Western Bays by conveying treated water from the South Shore Water Reclamation Facility* to the Cedar Creek Water Pollution Control Plant (WPCP) ocean outfall.

*Formerly known as Bay Park Sewage Treatment Plant

Project Benefits



STORM PROTECTION

Spur the rapid ecological recovery of the Western Bays marshlands, which will protect coastal communities from storm surge and sea-level rise



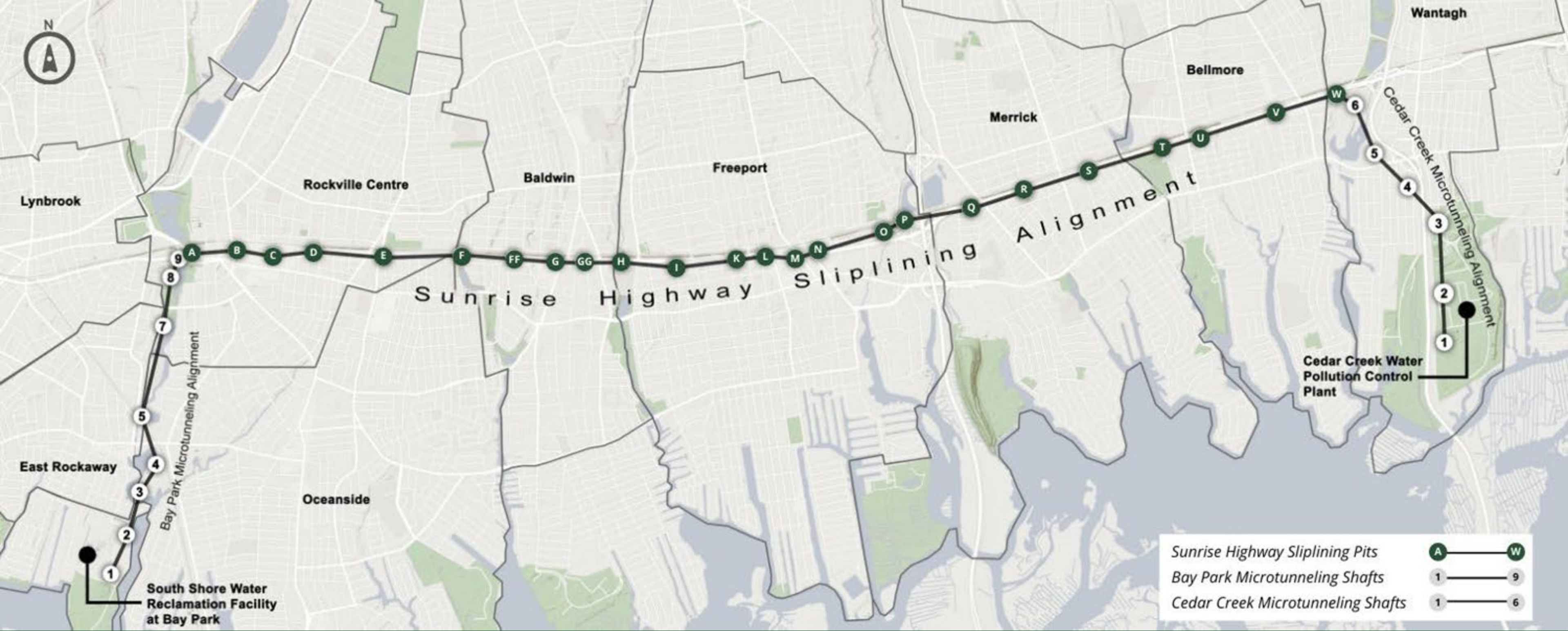
QUALITY OF LIFE FACTORS

Maximize quality of life by providing residents a place to work and play



ECONOMIC BENEFITS

The ecological recovery of the Western Bays and improved water quality will enhance and expand water-based recreational and commercial opportunities



THE BAY PARK CONVEYANCE PROJECT OVERVIEW

PROJECT TIMELINE



CONSTRUCTION TECHNIQUES

- Microtunneling - Technique used to install piping deep into the ground.
- Sliplining - Utilizes existing infrastructure by inserting a new pipe into an existing pipe.
- Support of Excavation (SOE) - Used to support the earth during excavation.
- Jet Grouting - Technique used for groundwater control.

Preparation for jet
grout operation at
Cedar Creek Shaft 5,
(April 2022)



CONSTRUCTION UPDATES



BAY PARK SHAFT 1 (BP1)

- Next to BP1 crews are constructing a new pump station, wet well, and diversion structure.
- BP1 will be the first receiving shaft for MARSH-MELLOW, the Microtunnel Boring Machine (MTBM) arriving from BP2.
- Anticipated increase in construction vehicles and manpower for duration of this activity.



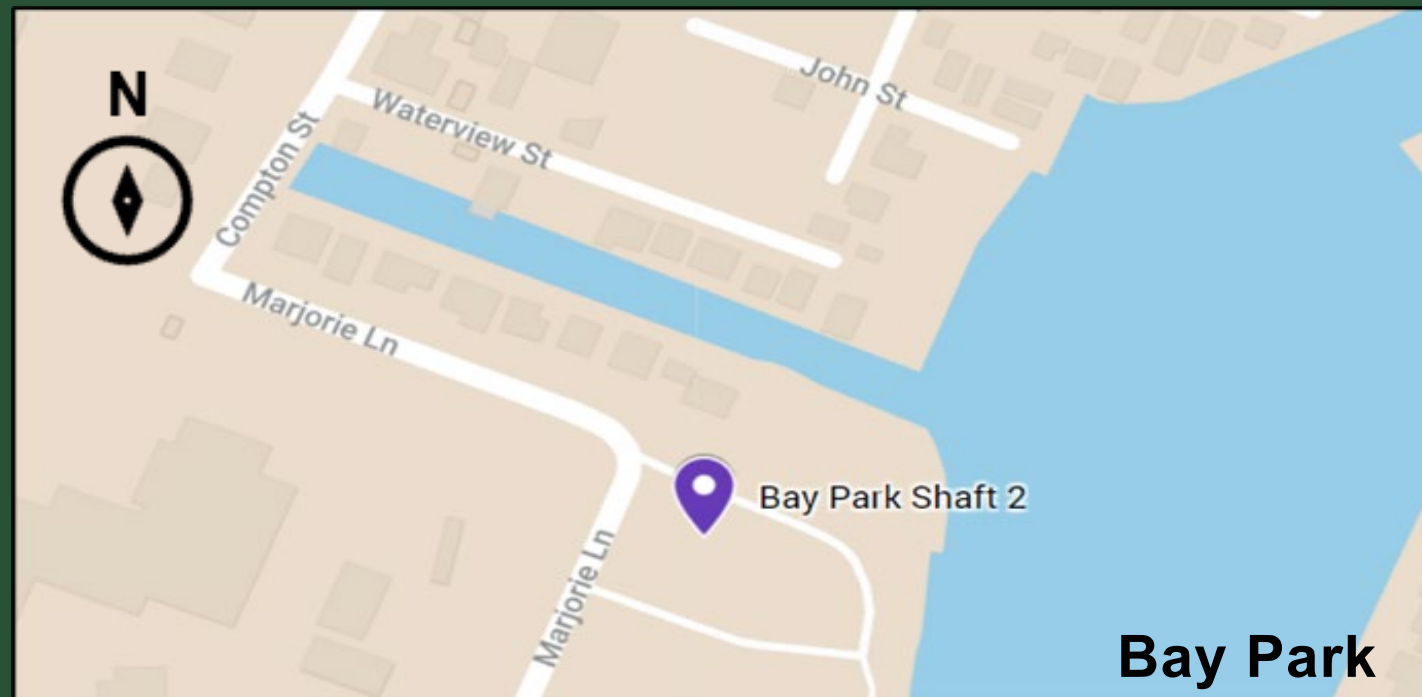
Location: Within the footprint of the South Shore Water Reclamation Facility at Bay Park



BP1 Wet Well (April 2022)

BAY PARK SHAFT 2 (BP2)

- Trucks continue to transport materials including segments of large pipe to BP2 for microtunneling.
- Microtunneling from BP2 to BP1 is underway and will proceed from BP2 to BP3.
- The first of two MTBMs, MARSH-MELLOW, will continue to microtunnel six days per week, including Saturdays.
- Park users will observe an increase in construction equipment and vehicles near Marjorie Lane.



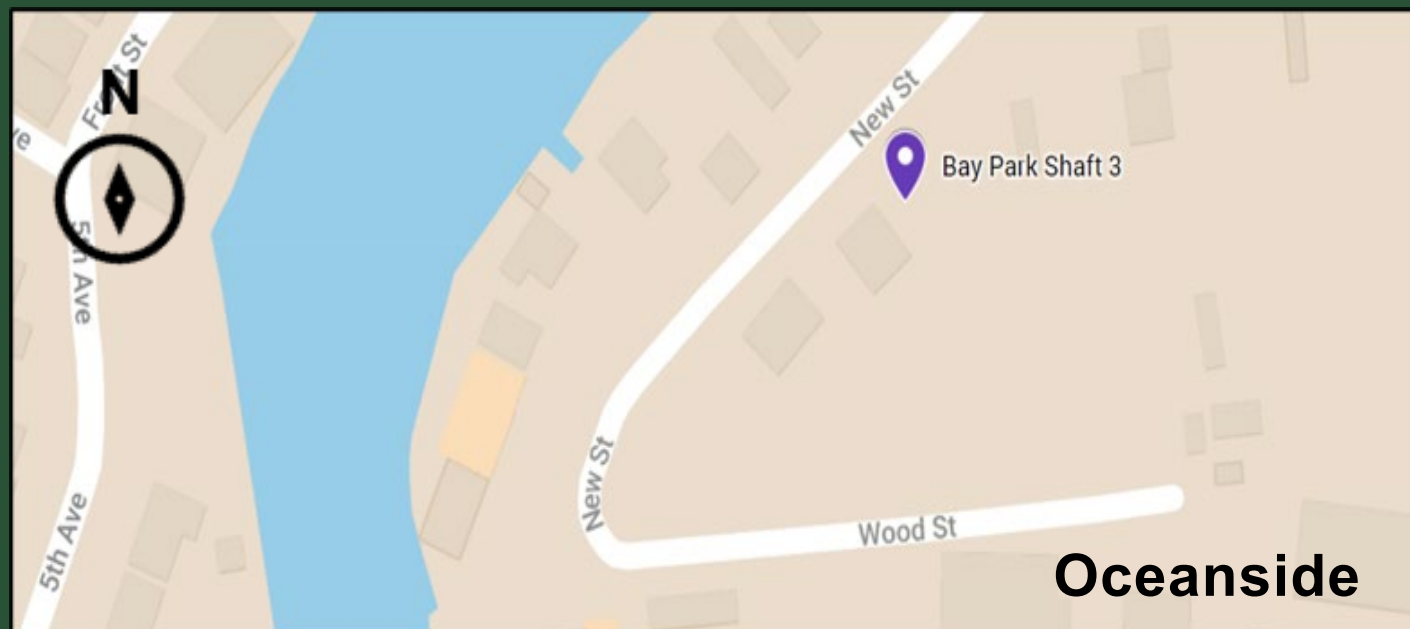
Location: Within the boundaries of Nassau County's Bay Park, at the northeast corner of Marjorie Lane



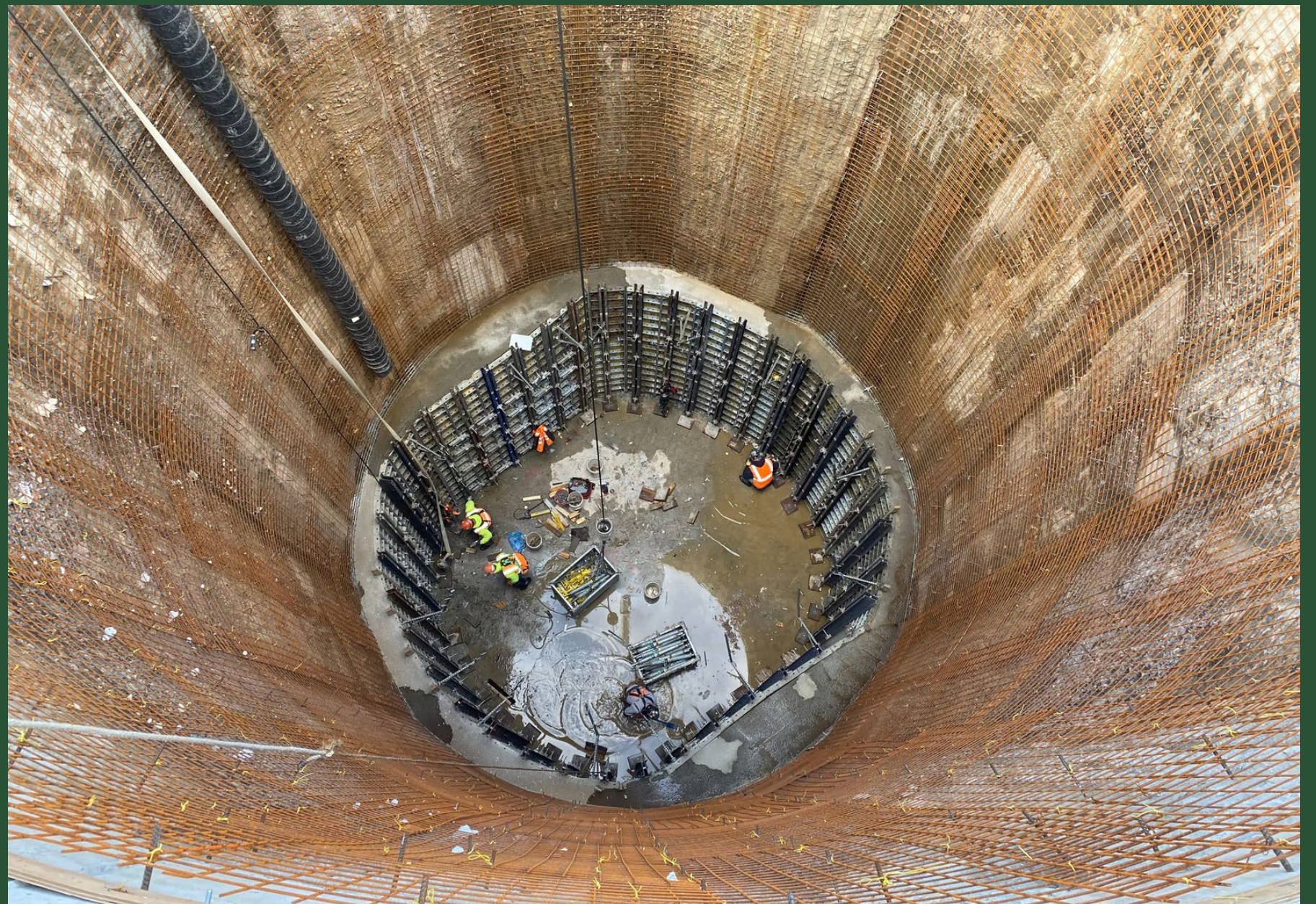
MTBM "MARSH-MELLOW" lowered into BP2 (April 2022)

BAY PARK SHAFT 3 (BP3)

- Shaft excavation and construction of reinforced concrete liner wall are complete.
- Crews continue to prep area in advance of microtunneling.
- Crews are constructing a scaffolding tower.



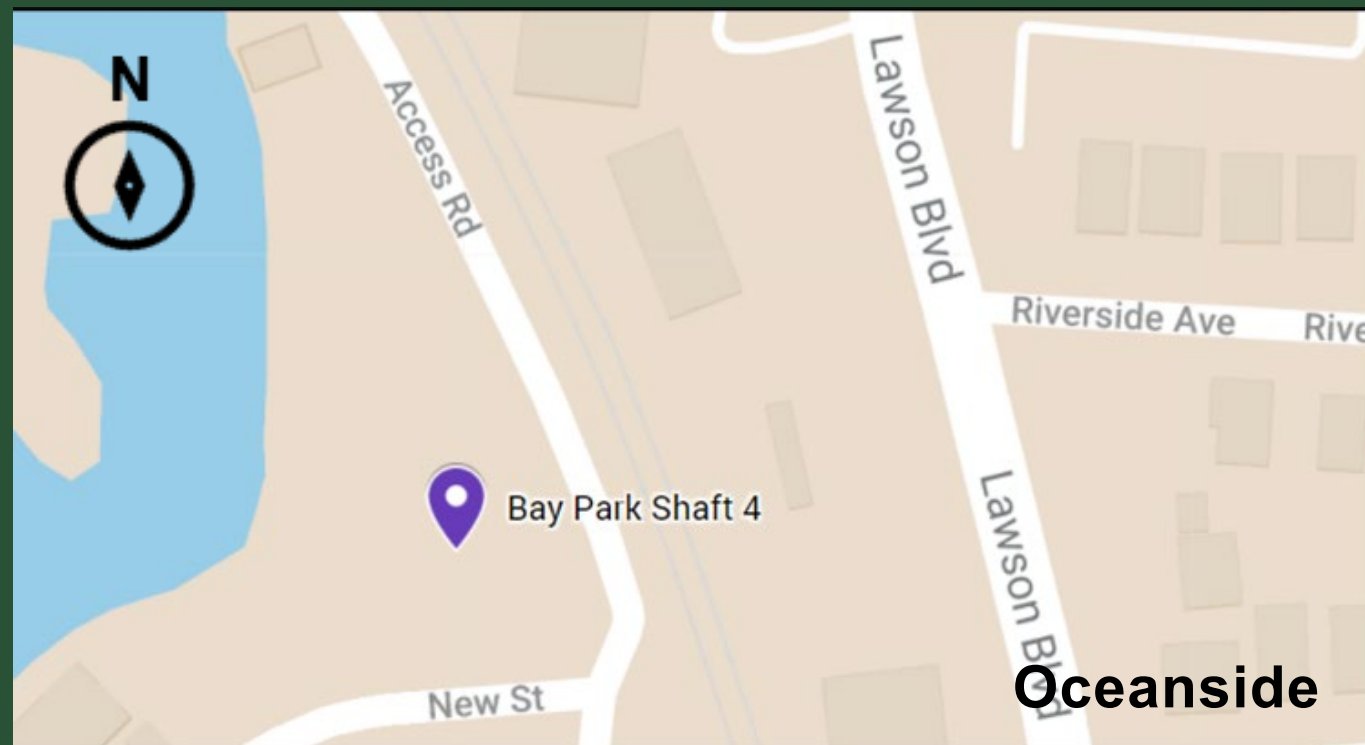
Location: Private property off New Street in Oceanside



Concrete liner installation at BP3 (April 2022)

BAY PARK SHAFT 4 (BP4)

- SOE installation is complete.
- Geotechnical monitoring devices installed on site.
- Site excavation in progress and continues through May.
- Following excavation, crews will construct reinforced concrete liner wall.



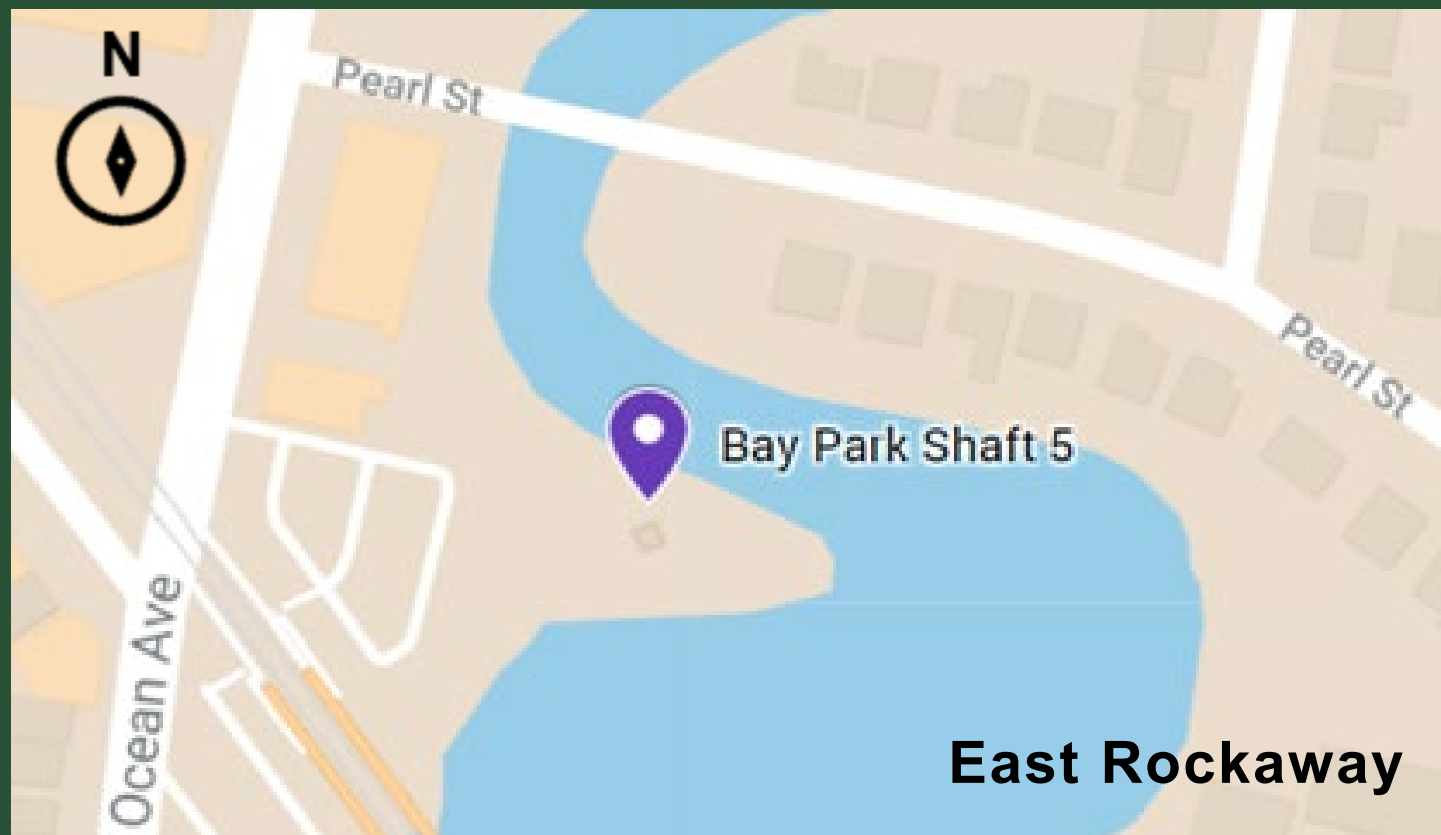
Location: Off New Street in Oceanside



Shaft Excavation at BP4 (April 2022)

BAY PARK SHAFT 5 (BP5)

- Site is being prepared for excavation.
- To facilitate construction activities, access to 9 parking spaces at Oxbow Park will remain closed until fall 2022.
 - Approx. 60 parking spaces remain open with two-way traffic in and out of the parking lot.
- Oxbow Park will remain closed through approx. fall 2022.



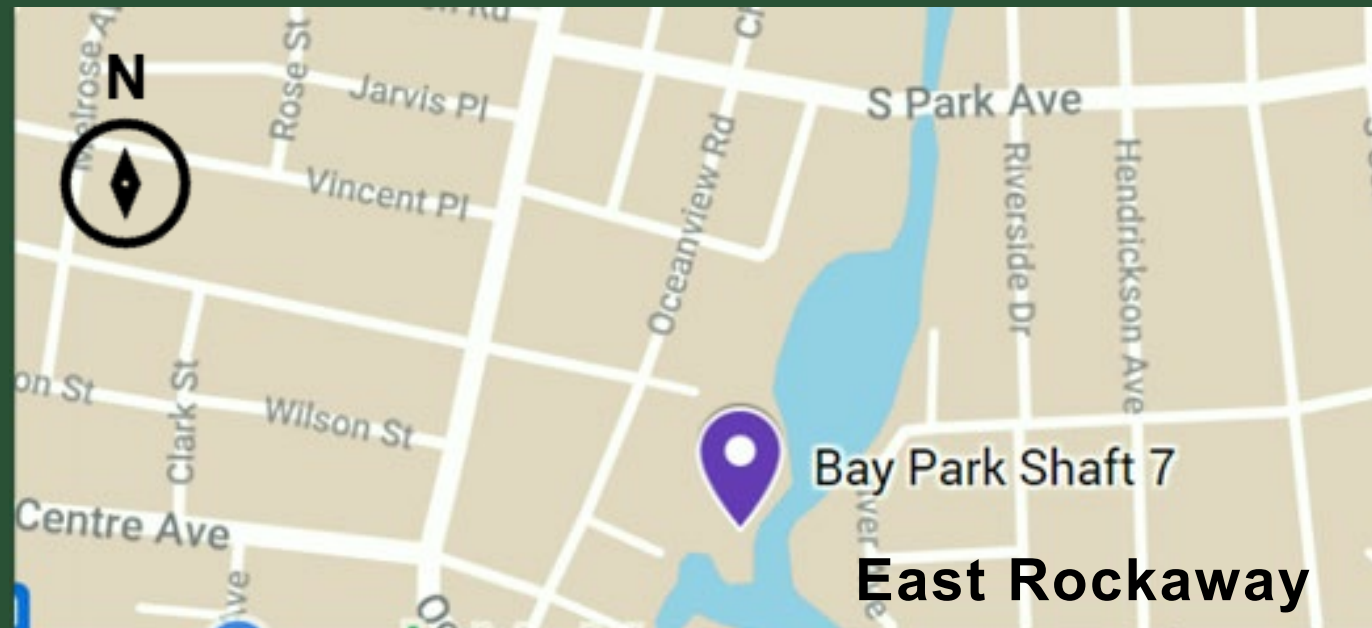
Location: East Rockaway Oxbow Park off Ocean Avenue near the East Rockaway LIRR Station



SOE Installation at BP5 (December 2021)

BAY PARK SHAFT 7 (BP7)

- Crews will continue to use this site for storage/laydown purposes.
- Installation of SOE is complete.
- Jet grout operation underway.



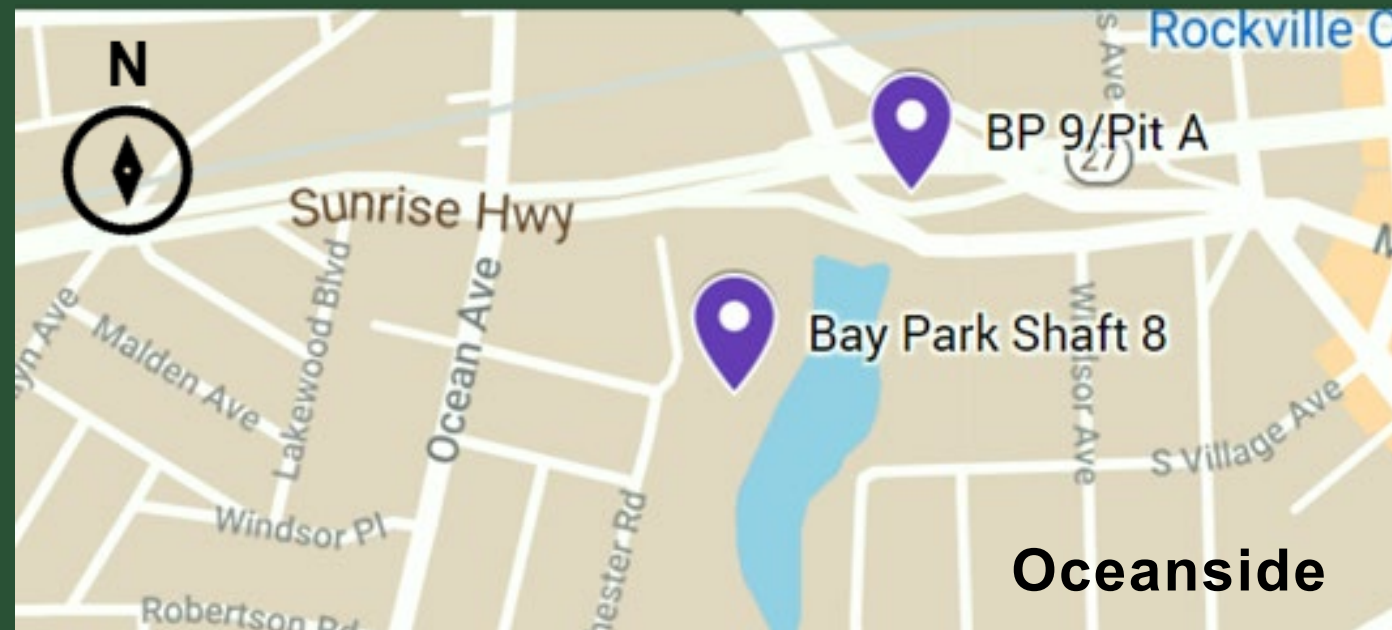
Location: Rockville Centre Department of Public Works Yard off Mill River Avenue



SOE Installation at BP7 (April 2022)

BAY PARK SHAFT 8 (BP8)

- Ongoing coordination with Rockville Centre is underway to minimize impacts to recreational use of Lister Field.
- SOE installation is complete and the shaft is ready for excavation anticipated to begin in June.



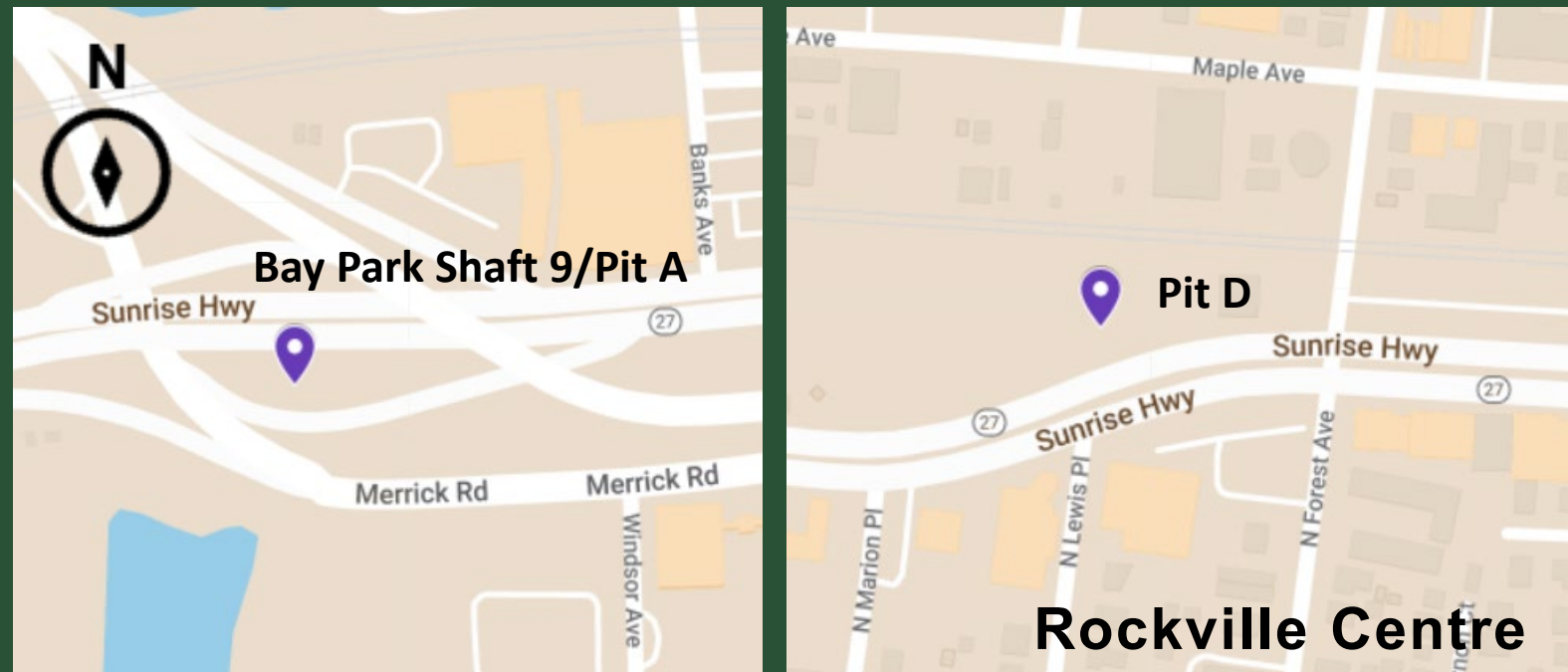
Location: Rockville Centre's Lister Field at the Mill River Complex Park



BP8 shaft site (April 2022)

BAY PARK SHAFT 9/PIT A AND PIT D

- With site preparation complete, SOE installation has commenced to be followed by jet grout operations.
- The sidewalk in front of Joyce Field, between Morris Avenue and North Forest Avenue, will remain closed for duration of the Project until 2024.
- Eastbound lane on the Merrick Road exit ramp on Sunrise Highway is expected to temporarily close. Flaggers will direct traffic in and out of the work area.



Locations:

Pit D: A construction entrance has been established at Joyce Field in Rockville Centre Sunrise Highway for storage and laydown of materials

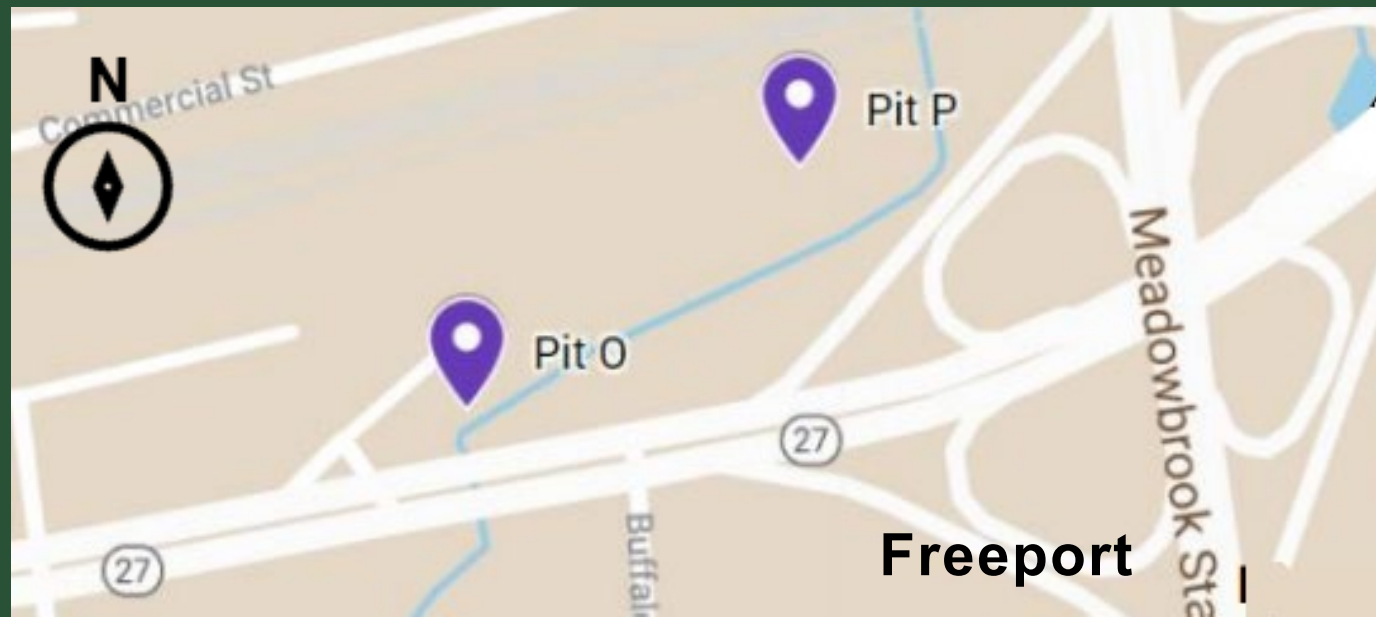
BP9 / Pit A: Construction entrance has been established at Sunrise Highway/Merrick Road Interchange



BP9 Site Location (January 2022)

SUNRISE HWY PITS O AND P

- Pipe jacking between Pits O and P is complete.
- WBC will continue to use the area for storage and laydown purposes.
- There will be a consistent presence of construction vehicles and crews in the area.



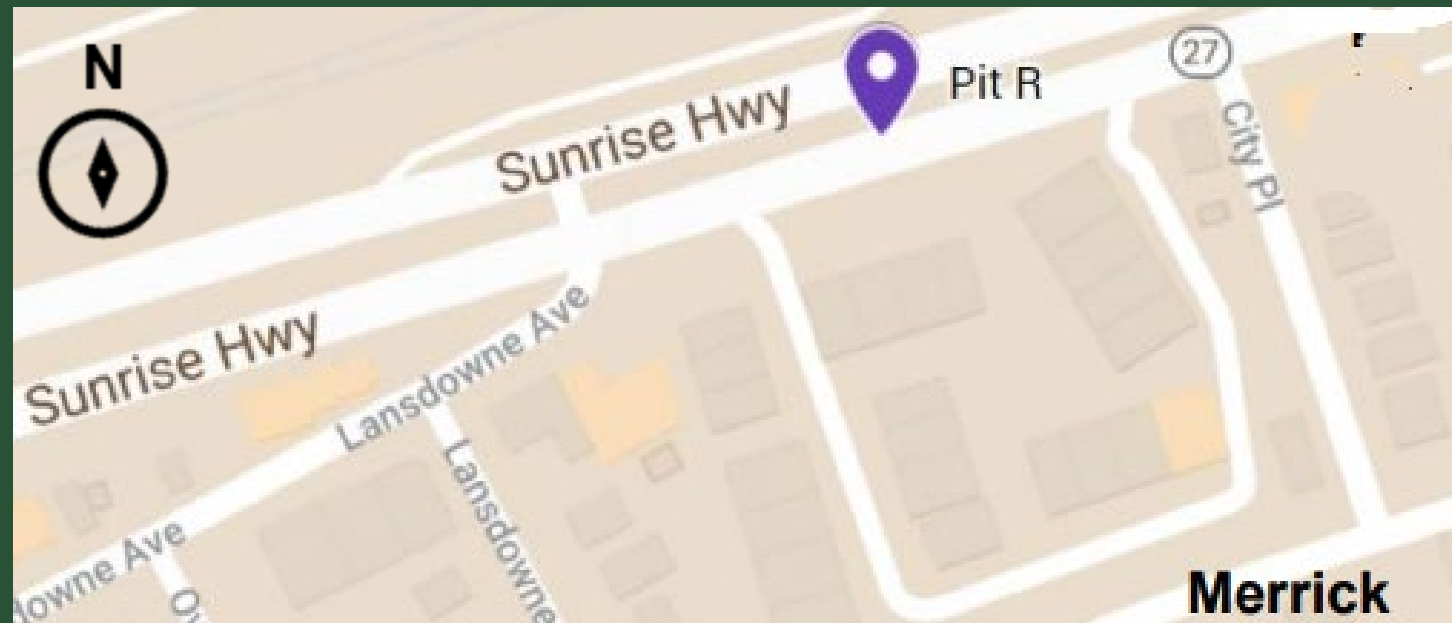
Location: North side of Sunrise Highway just west of the Meadowbrook Parkway



Start of Sliplining at Pit O (March 2022)

SUNRISE HWY PIT R

- Sliplining has commenced and will continue through May.
- Jacking frame installed at Pit R to slipline from Pit R to Q, then from Pit R to S.
- Crews continue to troubleshoot and address vibration concerns at Pit R.



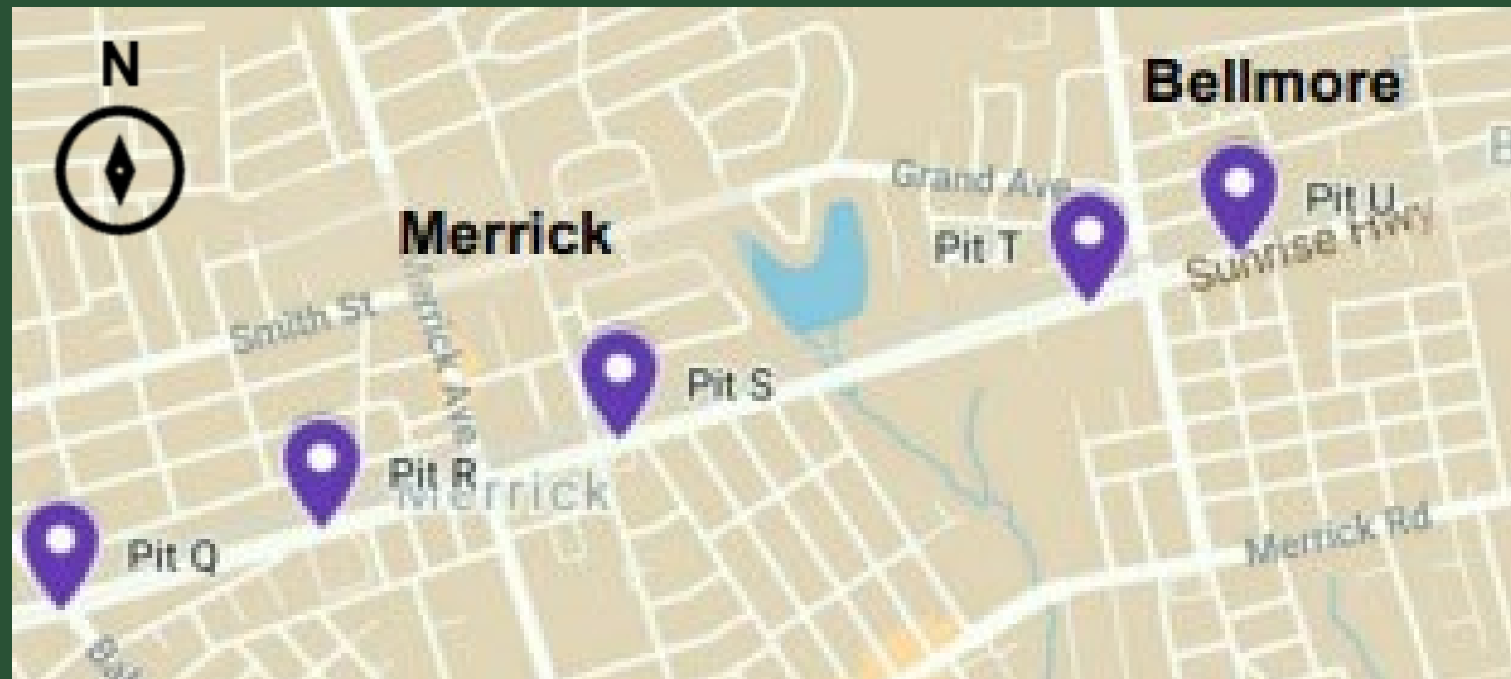
Location: South side of Sunrise Highway east of the Babylon Turnpike between Lansdowne Avenue and City Place



Sheeting installation at Pit R (January 2022)

SUNRISE HWY PITS Q-V

- Pits Q and S: Excavation is complete. Site preparation continues in advance of sliplining.
- Pits T and U: Crews continue to install additional SOE in advance of excavation and preparation for sliplining.
- Pit V: SOE and sheeting installation will begin this month. Installation of SOE can cause periods of noise and vibration that may be noticeable in areas adjacent to the work site.



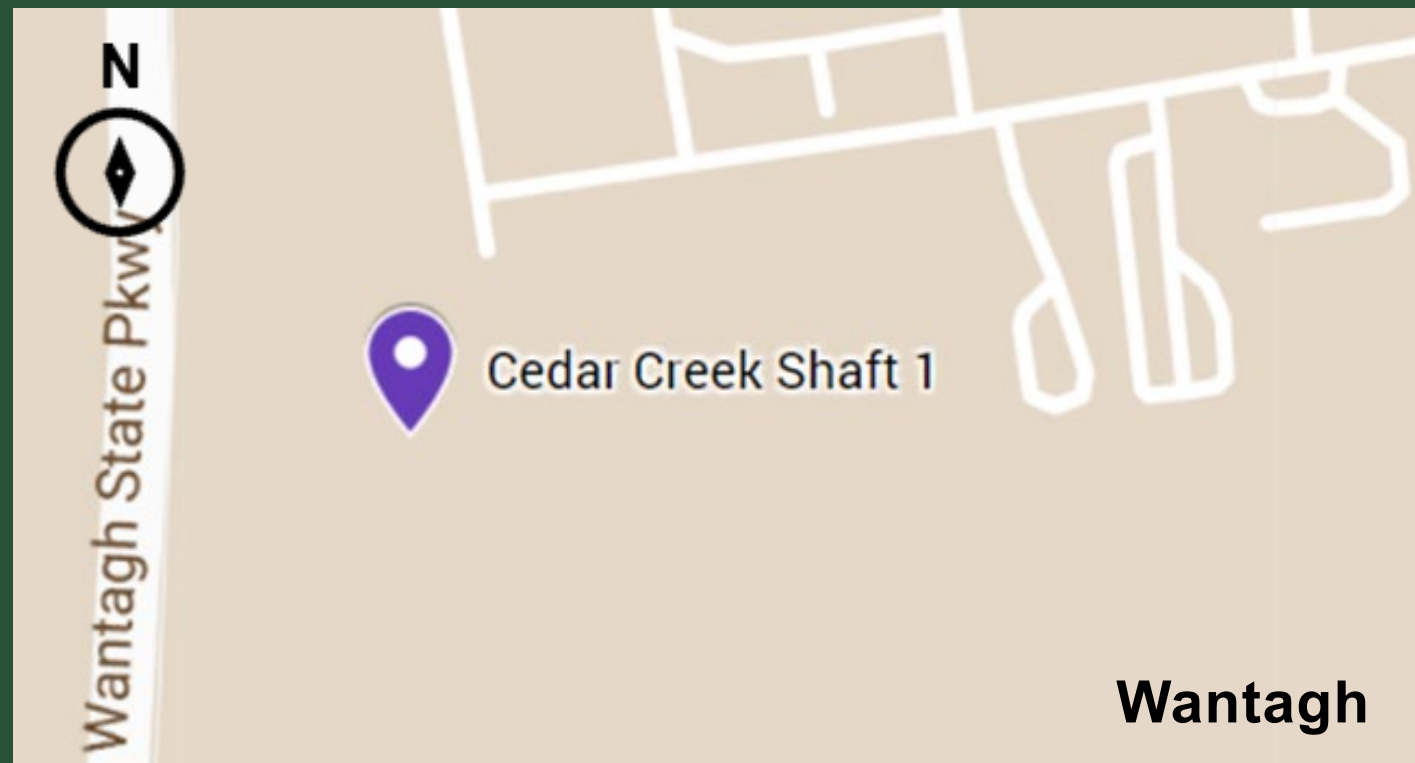
Locations: Pit Q: South side of Sunrise Highway, just west of Babylon Turnpike
Pit S: South side of Sunrise Highway, east of the Meadowbrook Parkway between Hewlett Avenue and Wynsum Avenue
Pit T: South side of Sunrise Highway, just west of Newbridge Road
Pit U: South side of Sunrise Highway, east of Newbridge Road, between Hanson Place and Argyle Place



SOE installation at Pit T (April 2022)

CEDAR CREEK SHAFT 1 (CC1)

- Shaft excavation is complete.
- Crews are constructing a reinforced concrete liner wall.
- Work at this location should have NO noticeable impact to Cedar Creek Park users.



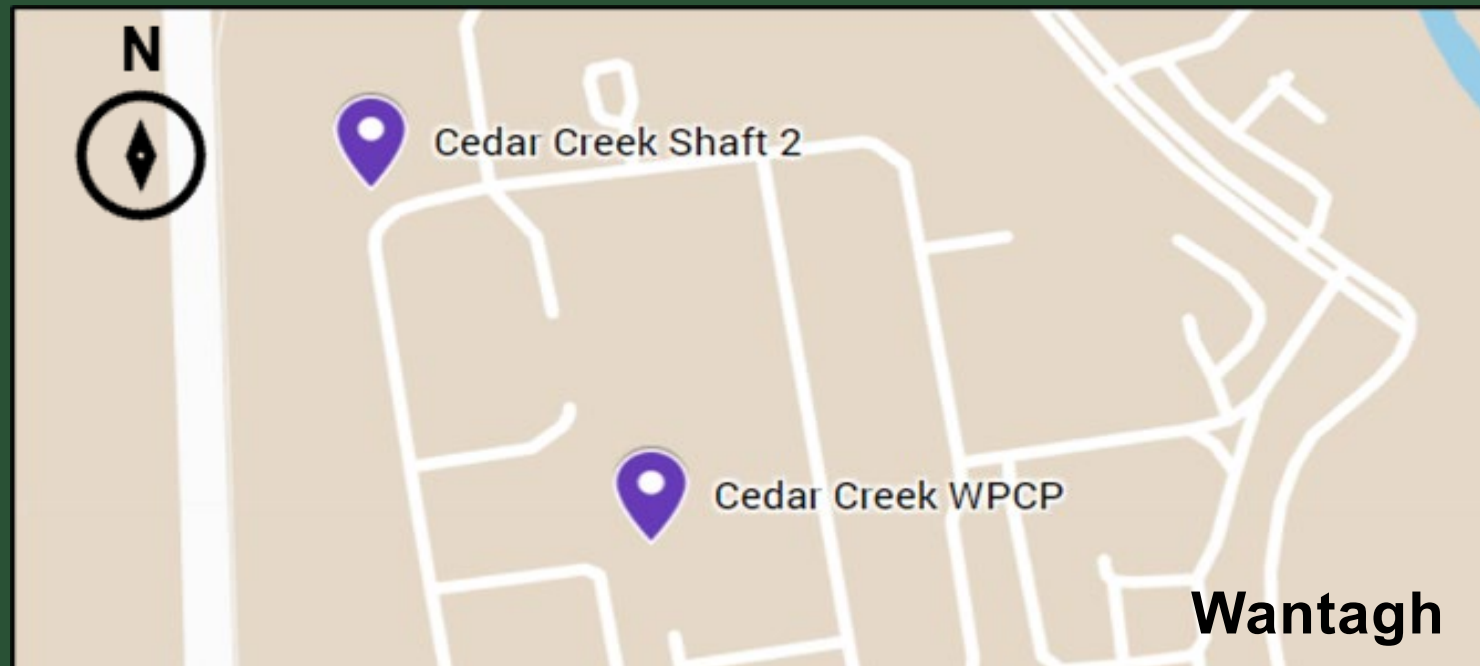
Location: Within footprint of the Cedar Creek Water Pollution Control Plant (WPCP)



Construction of reinforced concrete liner wall at CC1 (May 2022)

CEDAR CREEK SHAFT 2 (CC2)

- Shaft excavation complete.
- Shaft is being prepared for microtunneling.
- 2nd MTBM (P.O.S.E.I.D.O.N.) assembled in preparation for microtunneling anticipated to begin in June.



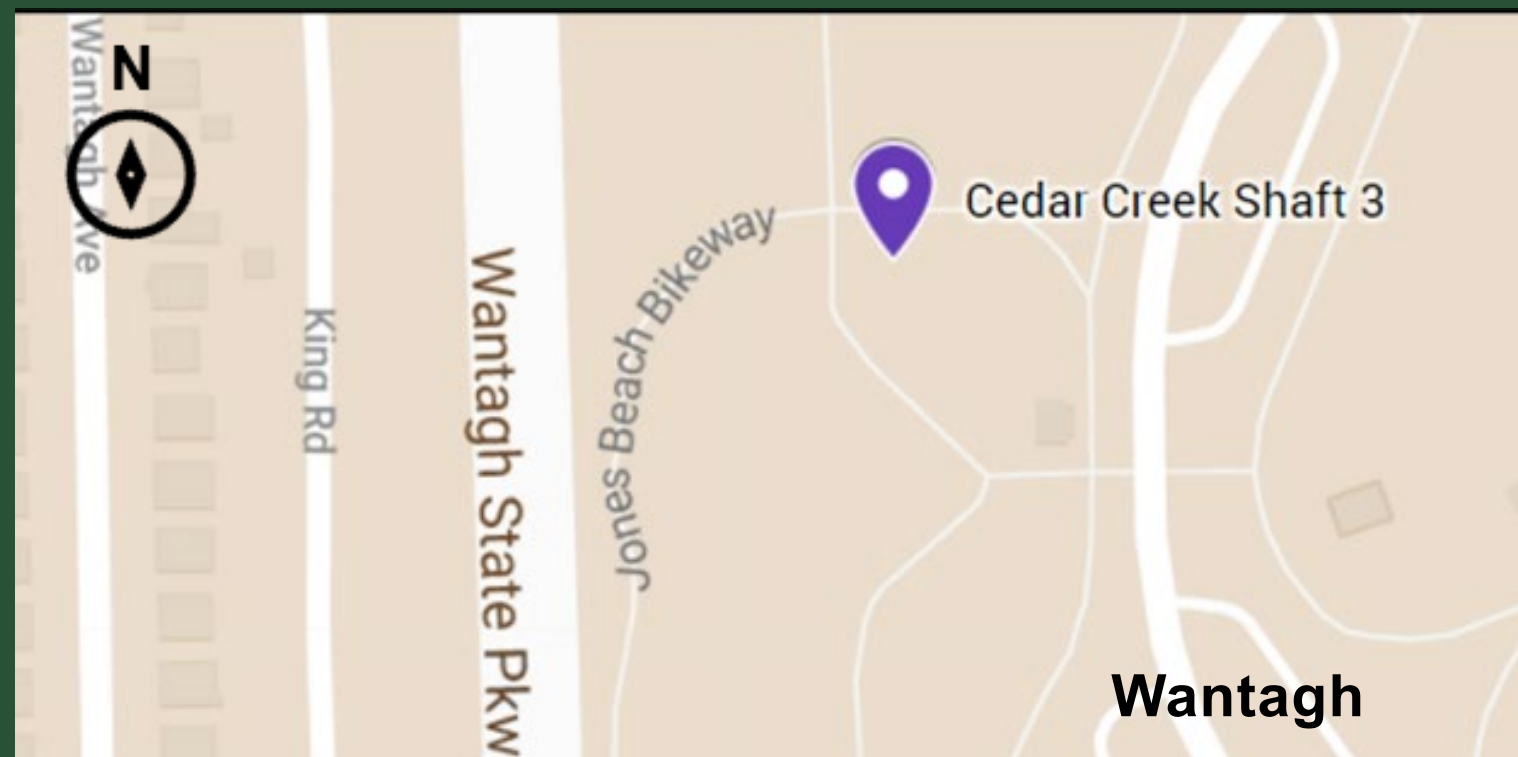
Location: Within the footprint of the Cedar Creek WPCP



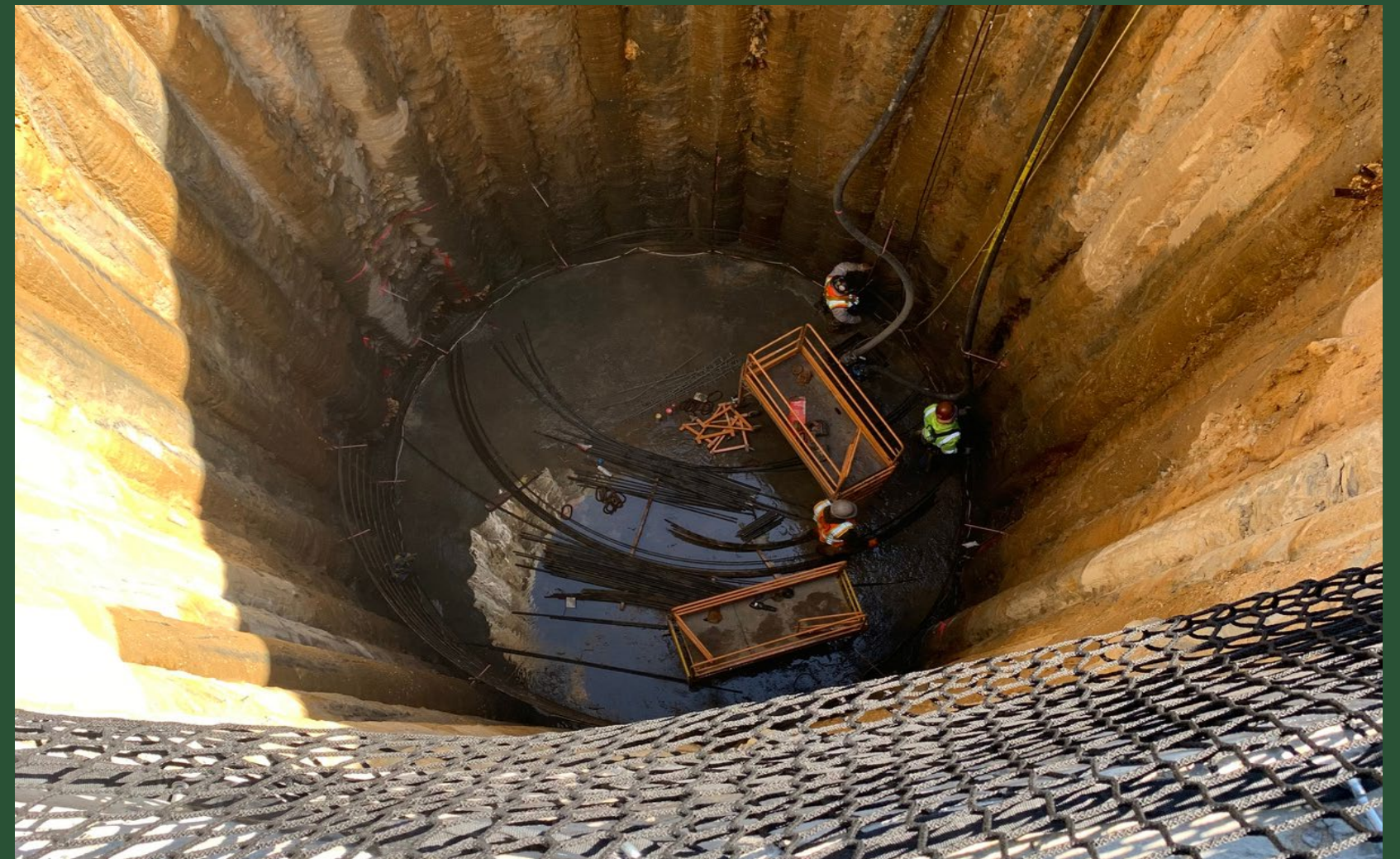
Shaft liner installation at CC2 (March 2022)

CEDAR CREEK SHAFT 3 (CC3)

- Shaft excavation complete.
- Crews continue construction of reinforced concrete liner wall and will install geotechnical monitoring devices prior to microtunneling.
- Jones Beach Bike Path is expected to remain open throughout construction.
- The public should be mindful of construction vehicles as they enter and exit the park and follow signage and/or direction from flaggers.



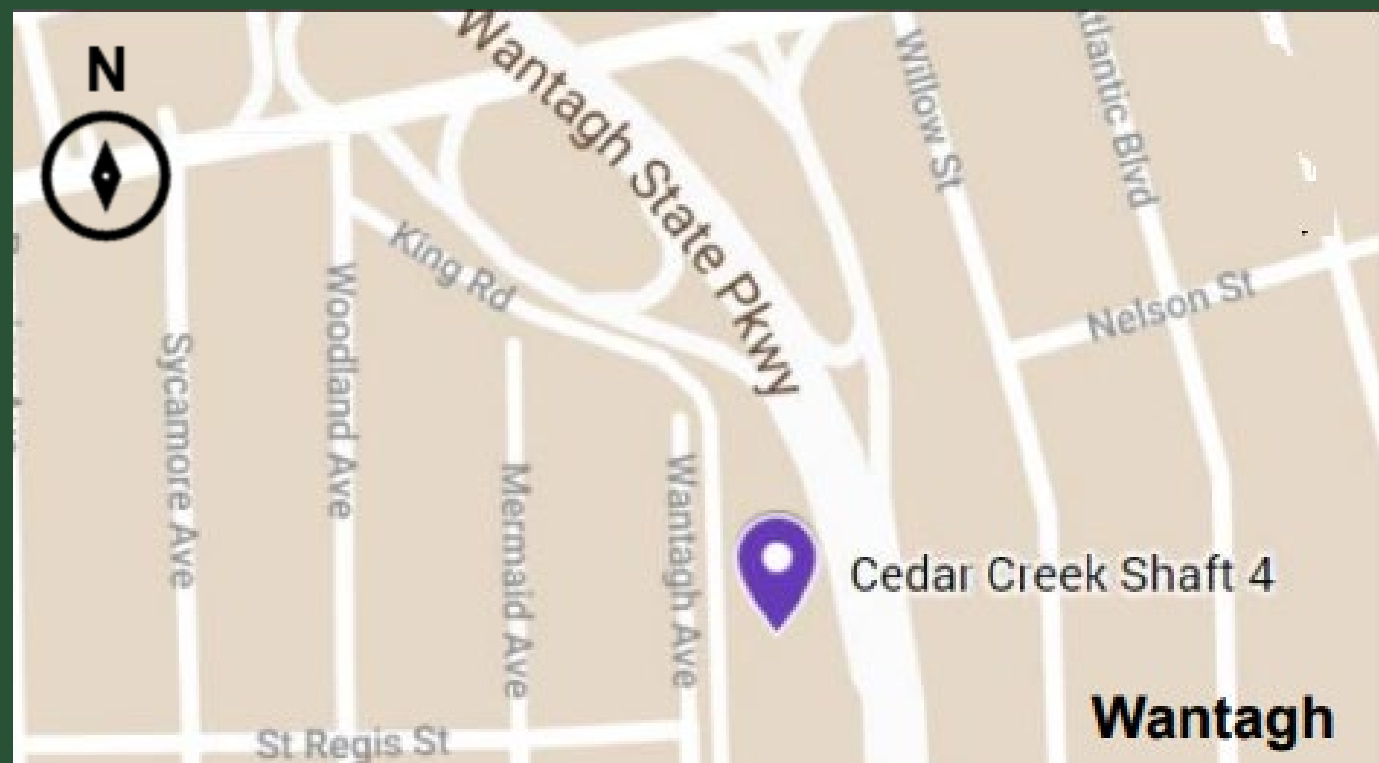
Location: Cedar Creek Park near the entrance to the Wantagh State Parkway and Jones Beach Bike Path



Rebar Installation at CC3 (May 2022)

CEDAR CREEK SHAFT 4 (CC4)

- SOE and jet grout installation complete.
- Ongoing installation of geotechnical monitoring devices.
- Crews continue to prepare shaft site prior to excavation, anticipated to begin end of May.



Location: Off King Road adjacent to Wantagh Avenue/St. Regis Street



Construction site at CC4 (April 2022)

CEDAR CREEK SHAFTS 5 (CC5) AND 6 (CC6)

- At CC5, SOE is complete. Jet grout operations underway. Excavation anticipated to begin in June.
- At CC6, sheeting installation is complete. Jet Grout operations begin following CC5.



Locations:

CC5: At the intersection of Brookside Avenue and Linden Street just west of the Wantagh State Parkway.

CC6: Off Lakeview Road south of Sunrise Highway.



Construction site at CC6 (April 2022)

PROTECTION OF TRAVELING PUBLIC AND WORK ZONES

- The Project team has deployed Work Zone Traffic Control and Maintenance and Protection of Traffic Signage to protect public safety and assist motorists and pedestrians around WBC work areas.
- Variable Message Signage (VMS) boards are deployed in advance of lane closures.
- Weekly “Before You Go” Facebook posts highlight lane closures for the week ahead.
- The Project team distributes canvassing notices to nearby residents and businesses, as needed.



TREE REMOVAL AND RESTORATION

- Limited removal of vegetation and trees facilitates construction across the Project alignment.
- NYSDEC and NCDPW are committed to – at a minimum – replacing trees removed during construction.
- Tree restoration plan and schedule for replanting are being developed.





SPOTLIGHT ON SAFETY & CONSTRUCTION TIDINESS

- All work pits and shafts are enclosed and protected with fencing, inaccessible to the public.
- WBC is following all OSHA guidelines.
- Quality control team is present during each operation.
- Emergency services briefed monthly including onsite visits to shaft/pit locations.
- Ongoing coordination with WBC safety to establish protocol for emergency situations.

STAKEHOLDER ENGAGEMENT



COMMUNITY INFORMATION CENTER (CIC)

- The CIC, located at 265 Sunrise Highway, Rockville Centre is open.
- WBC offers in-person and virtual meetings from the CIC.
- Project representatives present:
 - M, W and F: 8am - 3pm
 - Tu and Th: 12pm - 7pm
 - Every other Sat: 9am - 12pm
- Available to meet by appointment.
- Please visit the Project website for updated hours.



COMMUNITY OUTREACH PROGRAM

- Construction monthly look-aheads and e-blasts.
- Door-to-door and digital canvassing notices.
- “Before You Go” Facebook campaign posted weekly.
- Quarterly public information sessions.
- Dedicated 24/7 project hotline, email, Facebook, and website.
- “What’s Happening Here” signs at each work location.
- Attendance at community events.





CONTACT US

Community Information Center
265 Sunrise Highway
Rockville Centre, New York 11570
*See website for hours

Email
BayParkConveyance@gmail.com

24/7 Project Hotline
(516) 252-6121

Website
www.BayParkConveyance.org

Facebook
[@BayParkConveyance](https://www.facebook.com/BayParkConveyance)



QUESTION AND ANSWER SESSION

Speaker Instructions



Use the raise hand feature to indicate you have a comment. If you are joining by phone, press *9 to raise your hand.



When called upon, a member of the Project Team will unmute your audio. You will then have to unmute yourself.

If you are joining by phone, press *6 to unmute yourself.



State and spell your name and affiliation (e.g. resident, press, etc.) prior to providing your comment. Please limit your comments to three minutes.

Speaker Instructions

00:03:00



Use the raise hand feature to indicate you have a comment. If you are joining by phone, press *9 to raise your hand.



When called upon, a member of the Project Team will unmute your audio. You will then have to unmute yourself.

If you are joining by phone, press *6 to unmute yourself.



State and spell your name and affiliation (e.g. resident, press, etc.) prior to providing your comment. Please limit your comments to three minutes.

THANK YOU!

 **The Bay Park
Conveyance Project**
A Western Bays Resiliency Initiative

