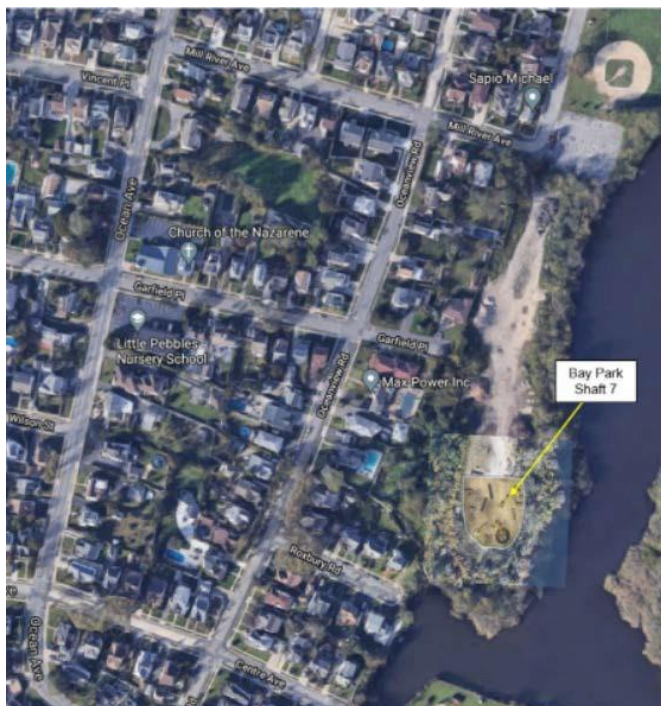


Dear Neighbor:

We are writing to update you on the construction of the Bay Park Conveyance Project. The Bay Park Conveyance Project is a partnership between the New York State Department of Environmental Conservation and the Nassau County Department of Public Works. Western Bays Constructors (WBC) is the design-builder for this innovative Project.

The Project will convey treated water from the South Shore Water Reclamation Facility at Bay Park (formerly known as the Bay Park Sewage Treatment Plant) to the existing Cedar Creek Water Pollution Control Plant's ocean outfall pipe, which discharges and diffuses treated water three miles offshore in the Atlantic Ocean. Construction involves underground microtunneling within your community. Microtunneling is a safe, effective way to install piping deep into the ground, avoiding long trenches and surface disturbance.

Bay Park Shaft 7 (BP7) is located at the Rockville Centre Department of Public Works Yard, off Mill River Avenue and Riverside Road. As construction in your area continues, we want to give you as much information as possible. Here's what you should know:



### **Machinery Delivery**

On Monday, May 9, 2022, between 4:00 a.m. and 5:00 a.m., WBC will mobilize additional equipment at BP7 using the dead-end at Garfield Place to enter the BP7 site. This activity is anticipated to be complete by 5:30 a.m. The equipment will be delivered during this time to ensure safety and adhere to NYS Department of Transportation regulations for oversized and/or permitted loads. The Garfield Place dead-end will only be accessed twice during this operation.

**Following this operation, WBC will begin the process of restoring the Garfield Place dead-end back to pre-existing condition.**

Through a dedicated Community Outreach Program, WBC is committed to a robust engagement process and to maintaining an open line of communication throughout construction. We are also committed to minimizing disruption to neighborhoods affected by construction. WBC's Community Outreach Team will be available to answer questions and act as a project liaison throughout the duration of construction.

For more information on this project element, we encourage you to visit our website [www.BayParkConveyance.org](http://www.BayParkConveyance.org) and Facebook page [@BayParkConveyance](https://www.facebook.com/BayParkConveyance), and [register for email updates](#). Our Community Information Center is located at 265 Sunrise Highway in Rockville Centre; please visit our website for hours. You may contact us via the Project's 24/7 hotline at (516) 252-6121 or email us at [BayParkConveyance@gmail.com](mailto:BayParkConveyance@gmail.com) with any questions.

Respectfully,

The WBC Community Outreach Team