

Dear Neighbor:

We are writing to update you on the construction of the Bay Park Conveyance Project. The Bay Park Conveyance Project is a partnership between the New York State Department of Environmental Conservation (NYSDEC) and the Nassau County Department of Public Works (NCDPW). Western Bays Constructors (WBC) is the design-builder for this innovative Project.

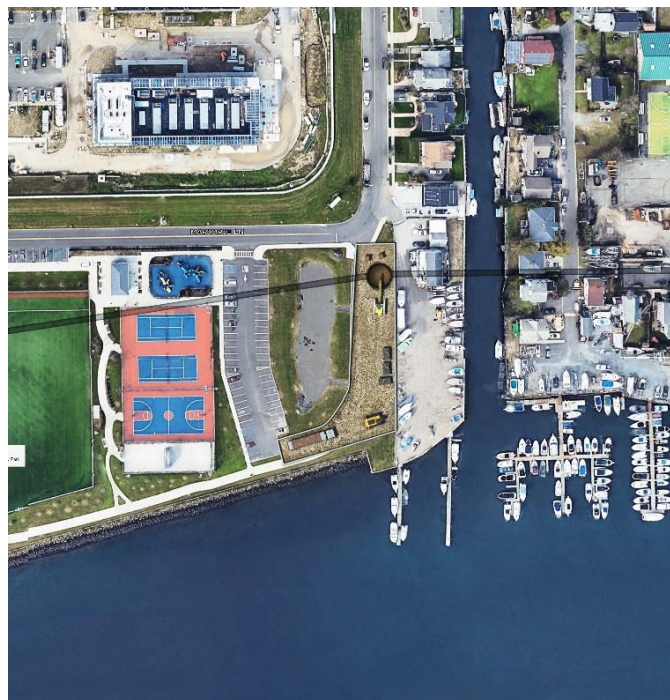
The Project will convey treated water from the South Shore Water Reclamation Facility at Bay Park (formerly known as the Bay Park Sewage Treatment Plant) to the existing Cedar Creek Water Pollution Control Plant's ocean outfall pipe, which discharges and diffuses treated water three miles offshore in the Atlantic Ocean. Construction involves underground microtunneling within your community. Microtunneling is a safe, effective way to install piping deep into the ground, avoiding long trenches and surface disturbance. As construction continues, we want to give you as much information as possible.

Machinery Delivery

Beginning **Monday, January 31st**, materials including segments of large pipe will be transported to the site of Bay Park Shaft 2 (BP2), located at the northeast corner of Marjorie Lane, in preparation for microtunneling. During the month of February, materials will arrive at BP2 using flatbed trucks. The pipe and materials will support microtunneling activities, which will progress deep below the ground from BP2 towards Bay Park Shaft 1, located within the footprint of the South Shore Water Reclamation Facility.

As a result of this delivery, parking will be temporarily restricted along Compton Street and Marjorie Lane from January 31st until approximately February 18th.

Additionally, to accommodate for this delivery and future material deliveries, the parking lot adjacent to BP2 will remain closed through approximately spring 2022.



Illustrative graphic of Bay Park Shaft 2

Through a dedicated Community Outreach Program, WBC is committed to a robust engagement process and to maintaining an open line of communication throughout construction. We are also committed to minimizing disruption to neighborhoods affected by construction. WBC's Community Outreach Team will be available to answer questions and act as a project liaison throughout the duration of construction.

For more information on this activity, we encourage you to visit our website <http://www.BayParkConveyance.org> and Facebook page [@BayParkConveyance](https://www.facebook.com/BayParkConveyance) and register for email updates. Our Community Information Center is located at 265 Sunrise Highway in Rockville Centre and open Mondays, Wednesdays, and Fridays: 8AM – 3PM, Tuesdays and Thursdays: 12PM – 7PM, and every other Saturday beginning 1/8/2022: 9AM – 12PM. You may contact us via the Project's 24/7 hotline at (516) 252-6121 or email us at BayParkConveyance@gmail.com with any questions.

Respectfully,

Margo K. Cargill
Community Ambassador

